

OUR REACH

The University of Rhode Island Expanded Food and Nutrition Education Program (EFNEP) is a free program that provides nutrition and physical activity education through hands-on lessons and activities. EFNEP empowers limited-resource families with children, and school-aged youth to make nutrition and physical activity-related behavior changes to facilitate a healthy lifestyle and reduce chronic disease risk.

Cities Reached

- Woonsocket
- Central Falls
- Pawtucket
- Providence
- West Warwick



647 youth,
11 adults engaged, &
37 community partners
reached

Quote from an elementary school program participant:
"These grains that you are showing us look just like the grain foods my bird eats! I will eat whole grains just like her!"

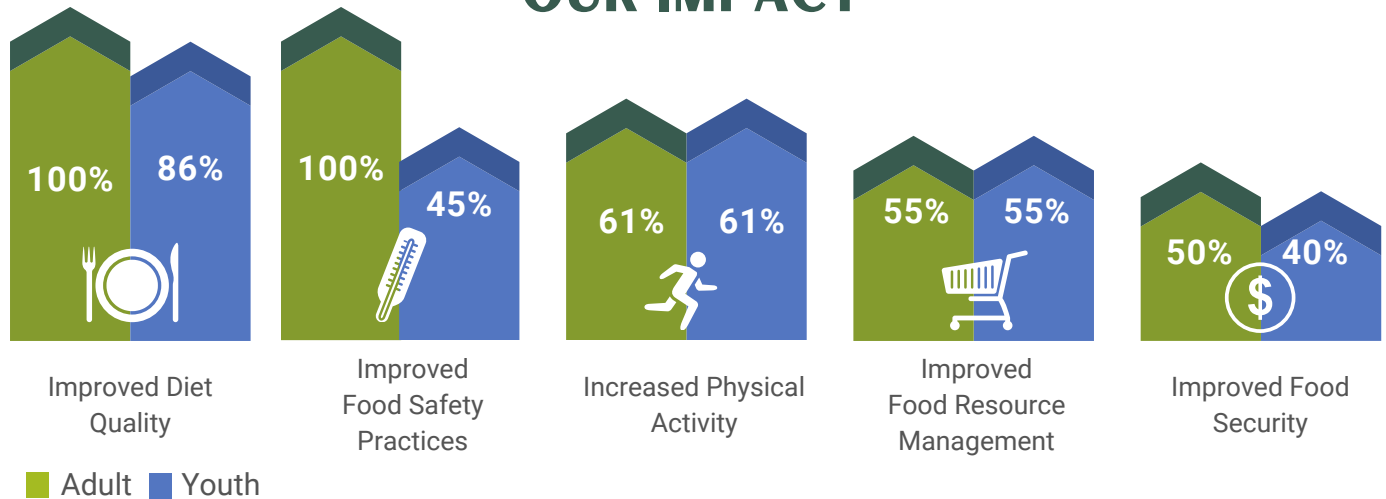


EFNEP Community Nutrition Educators



Cooking Demo with School-Aged Children

OUR IMPACT



CONTACTS:

Sarah Amin PhD, MPH
EFNEP Director
sarah_amin@uri.edu

Ruthann Marchetti MS, RD, LDN
EFNEP Program Manager
ruthann.marchetti@uri.edu
401-277-5272

HOW TO FIND US:

web.uri.edu/efnep/



REQUEST A CLASS:

