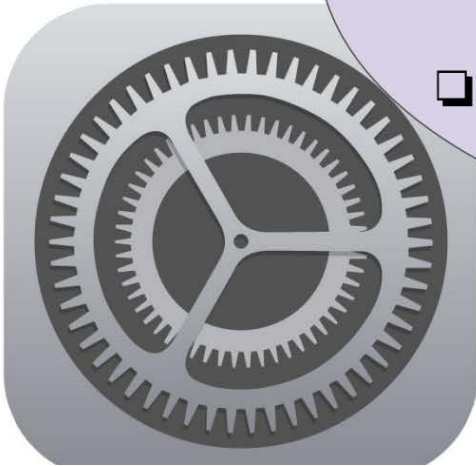


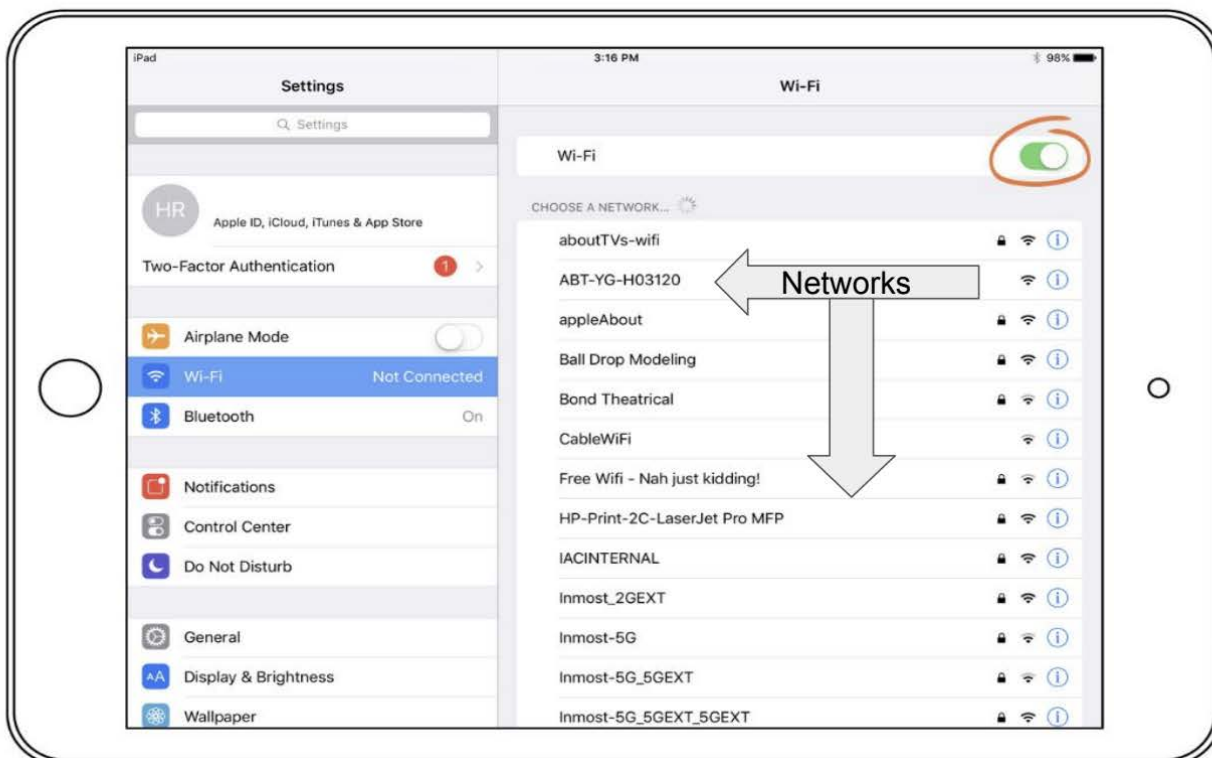
Handout #3

Settings App:

- ❑ Gray logo with gears
- ❑ Hub containing various features to customize appearance/functions of the iPad
- ❑ Contains wifi, apple ID, bluetooth, accessibility, and more!



Connecting to Wifi



1. Turn on toggle (circled at the top right) GREEN = on

2. Select network

3. Enter password (if needed)

3. A blue checkmark will indicate that you have connected to the wifi successfully!

Using Hotspot for iPad Through Smartphone

1. On your iPhone, select “Personal Hotspot” in settings

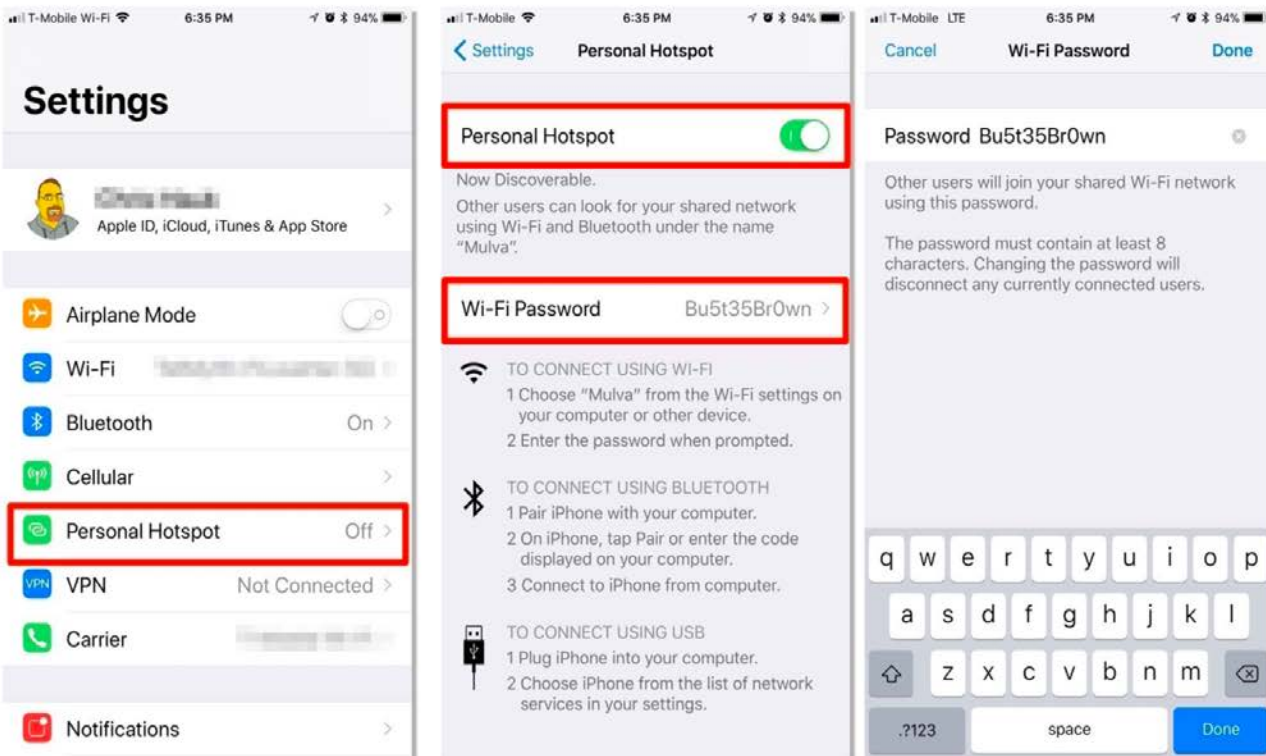
2. Turn toggle on (green)

3. Create a password (optional)

3. Return to iPad, select Wifi in settings & locate your iphone.

4. Enter password (if you created one on your iphone)

5. Blue check mark will appear, you are connected to your hotspot!



Accessibility in Settings

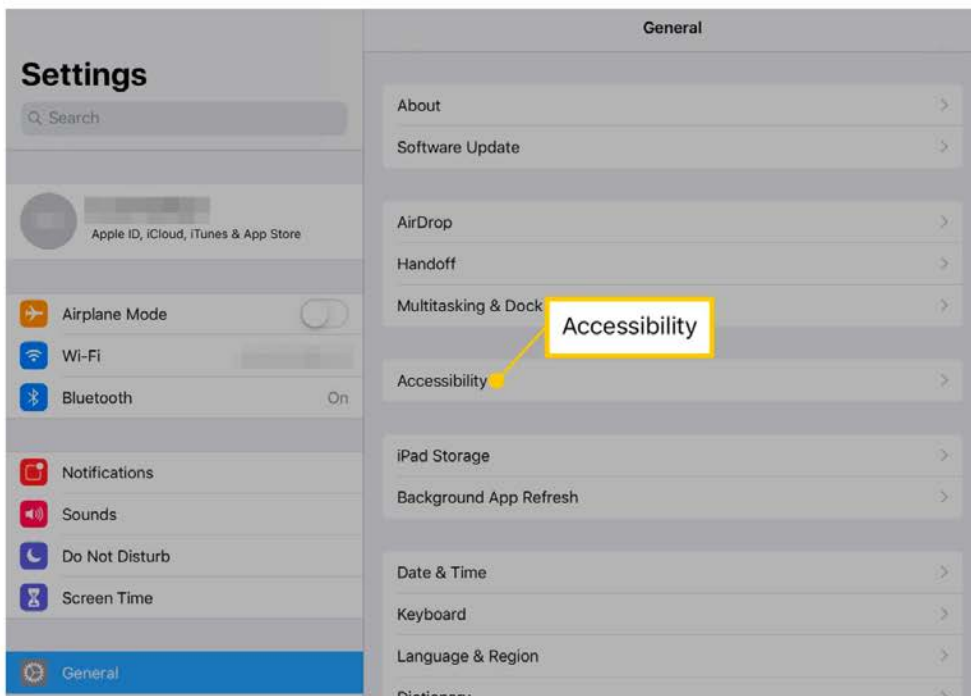
1. Select accessibility in settings

2. View accommodations that would be relevant to you!



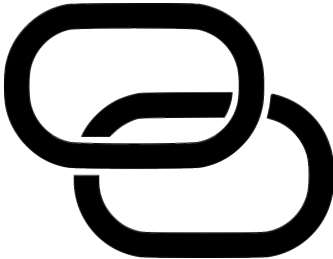
3. Turn on toggle to turn on the accessibility feature that you selected

4. Your device is now catered to you

❑ Accessibility features include the use of **hearing devices, assistive touch, live captions, and more.**



What Is...

<p>Settings</p> 	<p>A hub that stores all features of the iPad that can be adjusted to your needs!</p> <p>You can change your passcode, choose how you would like to receive notifications for call/text messages, and much more.</p> <p><u>Most common uses for settings:</u> Apple ID, Wifi/hotspot, Bluetooth</p>
<p>Wifi</p> 	<p>A section of settings that allows devices (including your iPad) to connect to the internet.</p> <p>Most apps on the iPad will not be accessible without connecting to Wifi.</p> <p><u>Tip:</u> Make it a habit to check that your device is connected to Wifi before using it.</p>
<p>Hotspot</p> 	<p>A wireless access point that lets you connect phones, tablets, computers, and other devices to the internet when you're on the go.</p> <p><u>Note:</u> Some smartphones may not contain hotspots; it's dependent upon your phone plan. In this case, Cyber-Seniors provides a "hotspot box" containing the network and password directly on the face of the box.</p>

Bluetooth



The ability to connect your iPad to an external device such as wireless headphones or a speaker. Once connected your iPad audio will then come through the speaker/headphones.

To connect to bluetooth: Enter settings and click on the bluetooth section, located near the top. Turn bluetooth on along with the device you are attempting to connect. That device should appear under devices. Select the device. Once it's connected, "connected" will appear alongside the speaker/wireless headphones.