

# Employment Authorizations for F-1 International Students

Office of International Students and Scholars (OISS)  
[issoff@etal.uri.edu](mailto:issoff@etal.uri.edu)



Office of International Students & Scholars  
International Center, 3<sup>rd</sup> Floor  
37 Lower College Road

[issoff@etal.uri.edu](mailto:issoff@etal.uri.edu)

Monday-Friday, 8:30am-4:30pm  
Appointment Only

[www.uri.edu/global/oiss](http://www.uri.edu/global/oiss)



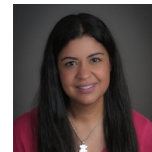
[@uri\\_intl](https://www.instagram.com/uri_intl)



[www.facebook.com/urioiss](https://www.facebook.com/urioiss)



**Abigail Borchert**  
International Student Services Advisor  
DSO, ARO



**Melissa De Jesus**  
Assistant Director of International Student Services  
PDSO, RO



**Shelley O'Connor**  
Coordinator of International Student Programs

# Maintaining Status: Employment

Any unauthorized employment, *including* off-campus internships or jobs *without* prior authorization

=

violation of status



**Do not do any unauthorized work. Check with OISS if you are unsure about eligibility for employment.**

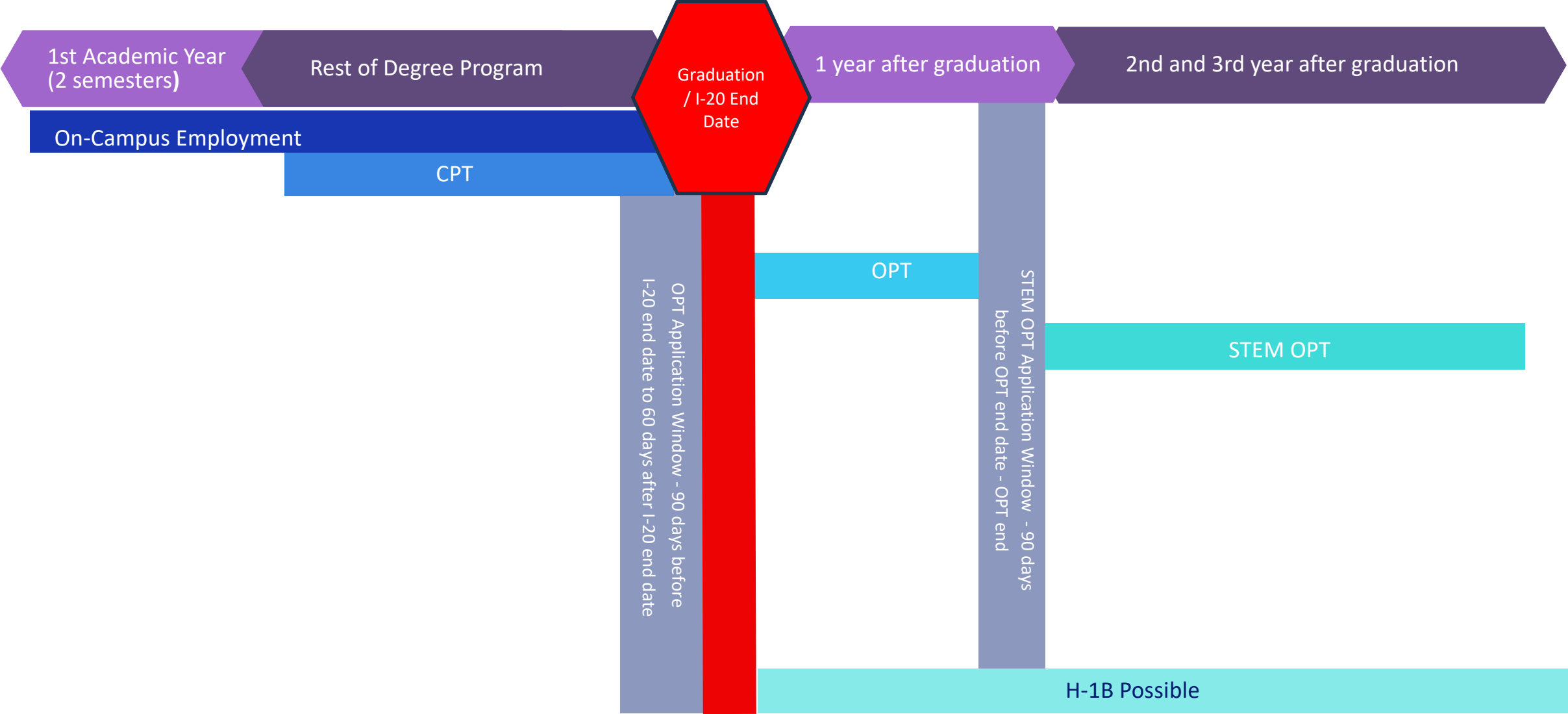
# *Whatever you do as a student sticks to you*

- Your immigration record **stays with you** all throughout your time in the US.
- Violations may not be found right away, but could result in **denial** of applications for employment authorization or permanent residence, applications for a visa, or entry to the US
- Material on your phone, resume, LinkedIn, etc can lead to questions about whether employment was authorized.
- Visa applications ask about unauthorized employment – omission of information can lead to **charges of fraud**.
- **DON'T RISK IT**
- **Ask us** if you have questions or if you need help

# Employment Authorizations

F-1 Status				Employment-Based	
	ON-CAMPUS	CPT CURRICULAR PRACTICAL TRAINING	OPT OPTIONAL PRACTICAL TRAINING	STEM OPT	H-1B
What	Work paid by URI or at on-campus commercial location	Authorization for off-campus internships that are part of a student's studies	One-year work authorization in student's field of study	Two- year OPT extension for students in <a href="#">STEM fields</a>	Work visa sponsored by employer
When	During academic program - before graduation / I-20 end	During academic program (must have completed 2 semesters) - before graduation / I-20 end	After graduation / I-20 end	Apply before end of OPT	Any time after graduation
Limitations	20 hrs/wk - semester full time - breaks	20 hrs/wk - semester full time - breaks Authorization is for specific employer + period	All work must be in field of study, 20+ hrs/wk, reported to SEVP	All work must be in field of study, 20+ hrs/wk per employer, e-verify, report to SEVP	Limited number of H-1Bs available for industry jobs, status is linked to employment
Paperwork	No additional authorization, will need to apply for SSN	Must be authorized by OISS before start of work	Must be authorized by USCIS before any work after I-20 end date, \$410 fee	Must be authorized by USCIS, additional form I-983 required, \$410 fee	Application is much more in-depth than OPT, employer files, usually with lawyer/specialist
Job Offer Required?	No additional authorization, will need offer letter to apply for SSN	YES	NO	YES	YES

# TIMELINE OF EMPLOYMENT OPTIONS



## **Curricular Practical Training (CPT)**

**Need a job offer to apply?: YES**

**When to apply:** As soon as you receive the job offer letter. Please allow OISS at least one week for processing.

### **How to apply for Curricular Practical Training (CPT)**

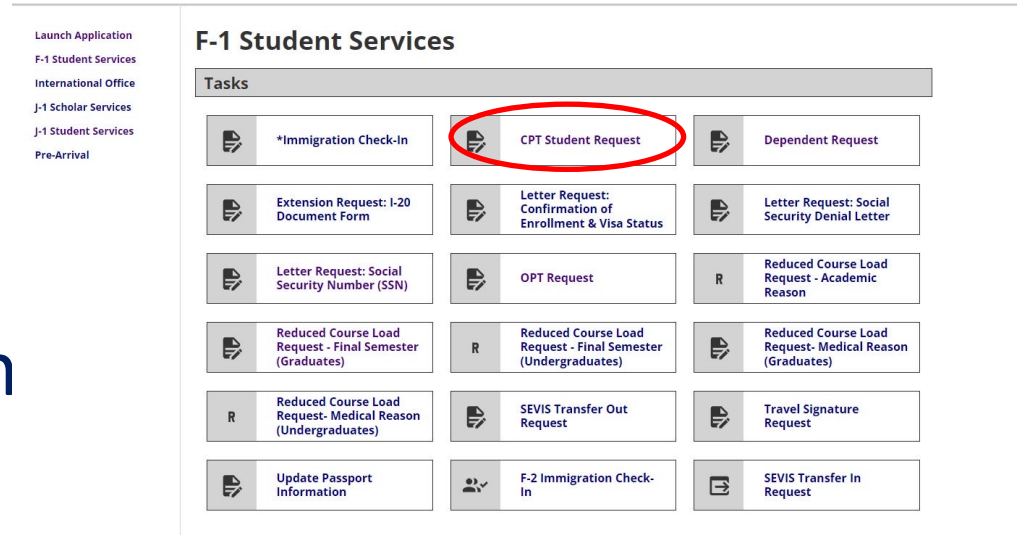
1. Apply for and be offered an off-campus internship or job in your field of study – obtain an offer letter including start date, end date, name of company, address of company, number of hours per week

# Curricular Practical Training (CPT)

2. Go to [sunapsis.uri.edu](https://sunapsis.uri.edu) and submit **CPT Student Request**

3. Your academic advisor will review and submit the form to OISS – if they have questions about CPT, they can ask us!

4. OISS will review and issue a new I-20 authorizing the CPT – this authorization is only for the time period and employer specified on page 2 of the I-20





## **[Post-Completion] Optional Practical Training (OPT)**

**Need a job offer to apply?: NO**

**When to apply:** Earliest you can apply is 90 days before graduation/I-20 end date. Allow up to 90 days for USCIS processing.

### **How to apply for Optional Practical Training (OPT)**

1. Attend OPT Workshops held by OISS in the semester you will be graduating for all the details
2. Apply on the USCIS website – you will need a new I-20 from OISS
3. USCIS will approve your OPT and issue EAD Card

## **[STEM] Optional Practical Training (OPT)**

**Need a job offer to apply?: YES**

**When to apply:** Earliest you can apply is 90 days before Post-Completion OPT end date, must apply before end date, can continue working will application is pending

### **How to apply for STEM Optional Practical Training (OPT)**

1. Contact OISS 90 days before your Post-Completion OPT end date for instructions
2. Apply on the USCIS website – you will need a new I-20 from OISS
3. USCIS will approve your OPT and issue EAD Card

## **H-1B**

**What:** A work visa sponsored by an employer

**When:** Any time after graduation

**Limitations:** Limited number of H1-Bs for industry jobs – lottery system, your status is linked to your employment and it's more difficult to change jobs – non-profits, including universities, are different

**Paperwork:** Employer, often working with a lawyer or immigration specialist, files paperwork with USCIS on behalf of employee – more complicated paperwork than OPT

**Need a job offer to apply?:** YES

# Questions?

**Office of International Students and Scholars (OISS)**  
**[issoff@etal.uri.edu](mailto:issoff@etal.uri.edu)**