

AI/ML SEMINAR

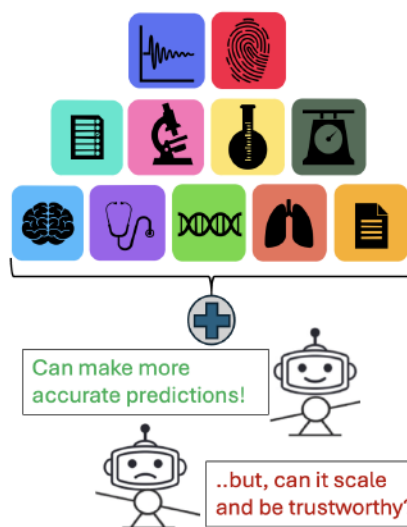
AI/ML techniques &
applications across
scientific domains

RITAMBHARA SINGH (BROWN)

Associate Professor of Computer Science

The promise and pitfalls of integrative AI in health

The **promise** and **pitfalls** of integrative AI in health



OCT 17, 12PM • MEMORIAL UNION RM. 308

45+15 minute talk and a subsequent
30 minute discussion session

PIZZA
WILL BE PROVIDED



All interested faculty, researchers, and students are encouraged to attend!