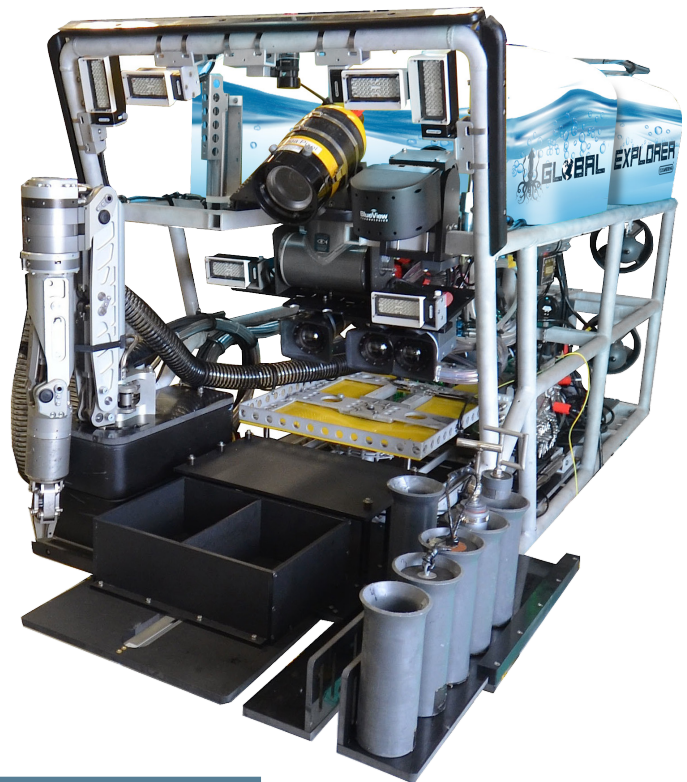


Global Explorer ROV

Tailor-made for the scientific community

This professionally crewed, telepresence-enabled remotely operated vehicle (ROV) leases for special projects in shallow and deep water.



FEATURES

Depth rated to 10,000 fsw / 3,000 msw

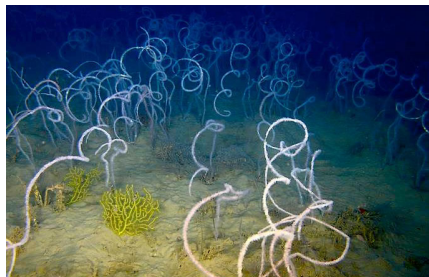
Unmatched 4k imagery

Adaptable to accommodate a full suite of scientific sampling tools



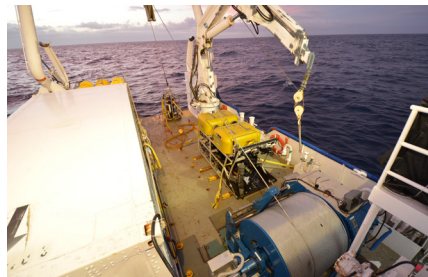
Deliver Science

Global Explorer accommodates a complete suite of scientific tools for mid-water and benthic sampling, including detritus sampler, rotary suction sampler, jet pump, push cores/quivers, and an insulated bio box. The vehicle's Schilling Robotics ORION seven-function spatially correspondent manipulator arm extracts fragile coral and artifacts with delicate precision.



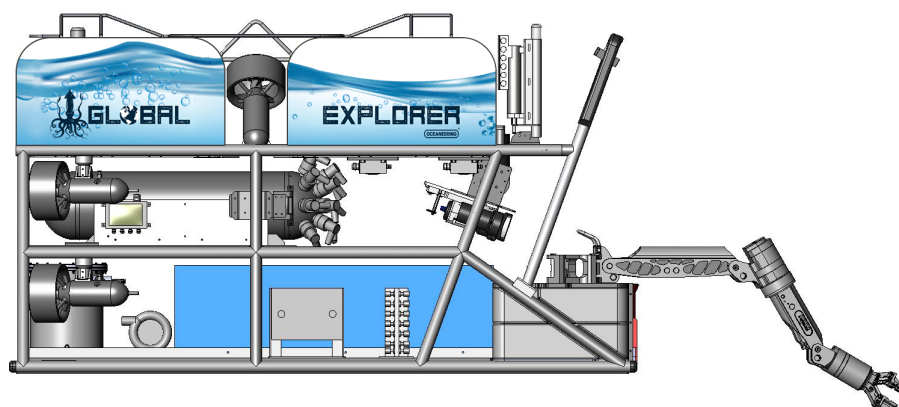
Capture the Deep

Global Explorer delivers unmatched live video imagery and stunning digital stills through a Gigabit Ethernet connection. Optional live satellite broadcast capability is available for extending collaboration and outreach.



Recover Assets

Global Explorer's nimble platform allows for fast, cost-effective transport and mobilization for asset recovery. Mobilization times have been optimized for an average of two days for mobilization and one day for demobilization. The vehicle can be deployed from relatively small vessels.



Cameras

- » 4K ultra-HDTV
- » HD cameras standard with optional photogrammetry
- » HD digital stills camera with optional laser scaling
- » Extreme low-light color HDTV
- » LED lighting 135° by 77° at 5500K

Sensors

- » Scanning sonar
- » Optional multibeam sonar
- » Sonar altimeter
- » Depth sensor
- » Gyro
- » Conductivity, temperature, depth (CTD)

Manipulator Arm

- » Schilling ORION seven-function spatially correspondent

Sampling

- » Rotary carousel suction skid
- » Retractable bio box
- » Detritus samplers
- » Jet pump
- » Adaptable for client-provided push cores, quivers, and niskins

© 2024 Oceaneering International, Inc. All rights reserved.