

# NSF ECORE RII Solicitation

- ECORE RII Program goals:
  - Address challenges and opportunities in research infrastructure specific to Rhode Island's current and evolving needs
  - Build capacity for jurisdiction-wide investigator expertise, leading to sustained, effective, research and education partnerships and funding.
  - Develop pathways to broaden the participation of institutions and individuals in Rhode Island's research ecosystem.
- A successful ECORE should be designed to meet the unique needs of Rhode Island's research ecosystem.
- E-CORE Programs will support one or several Research Specific Science and Technology Laboratories (E-RISES) as well as broader research in the state.
- Funding: 8 million dollars over 4 years with a possible extension to 8 years depending on performance

## Possible Cores:

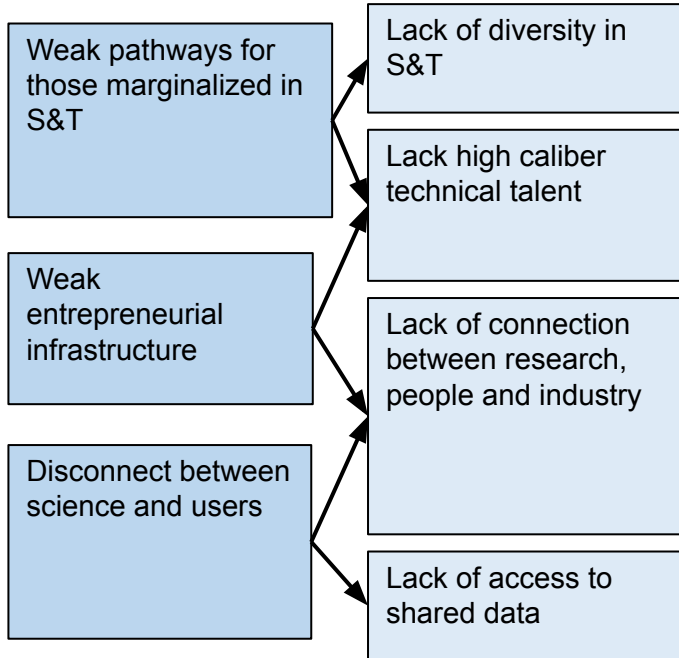
- Admin Core (*required*)
- Research Support Core
- Academic Infrastructure and Research Facilities
- Higher Education Pathways Core
- STEM Education (K-16) Core
- Workforce Development Core
- Broadening Participation Core
- National and Global Partnerships Core
- Community Engagement and Outreach Core
- Economic Development and Use-inspired
- Early Career Research Trainee Pathway Core
- Other Core(s) – Depending on a jurisdiction's specific needs

*The selection of a core must be based on evidence-based analysis and be justifiable in terms of data illustrating the need for that core within the jurisdiction.*

# RI Network for Excellence in Science and Technology Framework

**E-CORE RII RI-NEST Vision:** Enable the jurisdiction to develop and maintain broadly inclusive and competitive leadership in use-inspired S&T and workforce development

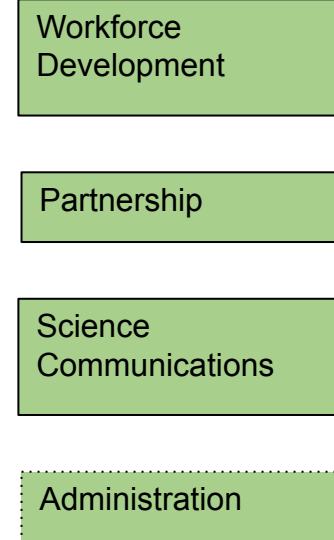
## Barriers



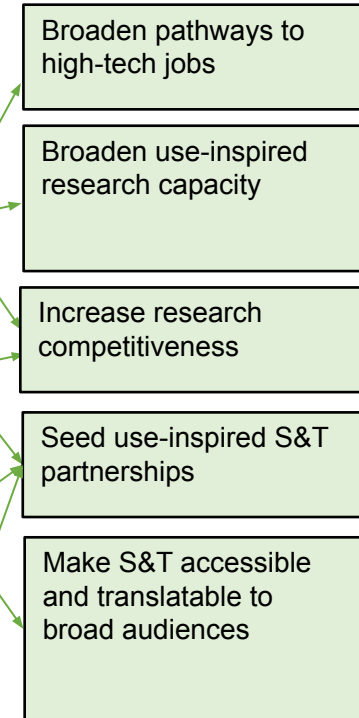
## Building Blocks



## Research Infrastructure Cores



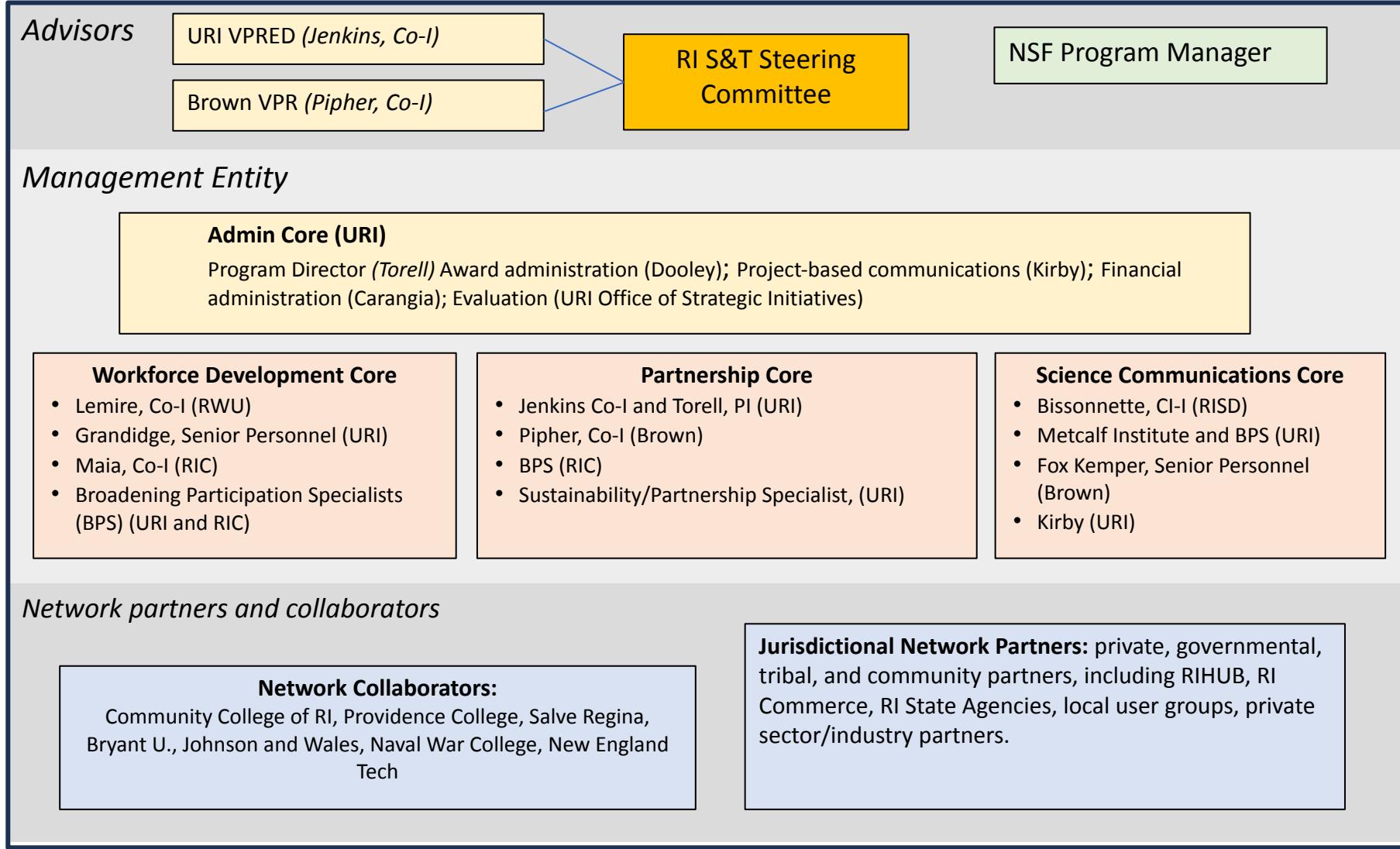
## Results/Impacts



## Outcomes and Indicators per Core

Outcomes/Indicators		
Workforce Development Core	Partnership Core	Science Communications Core
<ol style="list-style-type: none"> <li>1. # of pre-undergraduates reached</li> <li>2. # of minoritized undergraduates from PUIs institutions engaging in research</li> <li>3. # of student participants entering grad programs or work force.</li> <li>4. # of collaborations between IHEs and community organizations to reach pre-undergraduates (S)</li> <li>5. # of individuals trained in areas that deepen investigator competencies (S)</li> <li>6. # of submitted proposals and awards (S).</li> <li>7. # PUI faculty engaging in research and/or proposal development (S)</li> </ol>	<ol style="list-style-type: none"> <li>1. # key activities on path for sustainability by obtaining buy in (S)</li> <li>2. # of networking events organized to inspire new or strengthened partnerships.</li> <li>3. # seed and planning grants that lead to new partnerships and proposals (S).</li> <li>4. # of end-user driven research and workforce development partnerships (S)</li> <li>5. Funding leveraged to RI-NEST (S)</li> </ol>	<ol style="list-style-type: none"> <li>1. # of students and early career faculty trained and practicing inclusive sci-com</li> <li>2. # of inclusive sci-com events sponsored.</li> <li>3. # of viz-a-thon participants</li> <li>4. # of non-traditional partnerships developed because of Viz-a-thon and inclusive sci-com activities (S).</li> <li>5. # of students involved in RI-NEST newsroom</li> <li>6. # of media pieces developed by students</li> <li>7. # of students pursuing local media internship opportunities (S)</li> <li>8. Traffic and citation increase of the RIDDC</li> <li>9. # of intellectual products (peer reviewed papers, conf. proceedings, patents, databases, etc.)</li> </ol>

# RI-NEST Org Chart



## Advisors

URI VPRED (Jenkins, Co-I)

Brown VPR (Pipher, Co-I)

RI S&T Steering Committee

NSF Program Manager

## Management Entity

**Admin Core (URI)**  
Program Director (Torell) Award administration (Dooley); Project-based communications (Kirby); Financial administration (Carangia); Evaluation (URI Office of Strategic Initiatives)

**Workforce Development Core**

- Lemire, Co-I (RWU)
- Grandidge, Senior Personnel (URI)
- Maia, Co-I (RIC)
- Broadening Participation Specialists (BPS) (URI and RIC)

**Partnership Core**

- Jenkins Co-I and Torell, PI (URI)
- Pipher, Co-I (Brown)
- BPS (RIC)
- Sustainability/Partnership Specialist, (URI)

**Science Communications Core**

- Bissonnette, CI-I (RISD)
- Metcalf Institute and BPS (URI)
- Fox Kemper, Senior Personnel (Brown)
- Kirby (URI)

## Network partners and collaborators

**Network Collaborators:**  
Community College of RI, Providence College, Salve Regina, Bryant U., Johnson and Wales, Naval War College, New England Tech

**Jurisdictional Network Partners:** private, governmental, tribal, and community partners, including RIHUB, RI Commerce, RI State Agencies, local user groups, private sector/industry partners.

# RI NEST E-CORE RII Outline

- I. State of the Jurisdiction and E-CORE RII vision
  - A. Jurisdiction-wide status, strengths, and challenges
  - B. E-CORE RII goals and vision
  - C. Sustainability
  - D. Broader impacts
- II. Strategic plan, assessment, and evaluation
  - A. Strategic plan
  - B. Evaluation and assessment plan
- III. Leadership, organization, and management
  - A. Leadership team
  - B. Management plan
  - C. Diversity and culture of inclusion
- IV Results from prior NSF support