

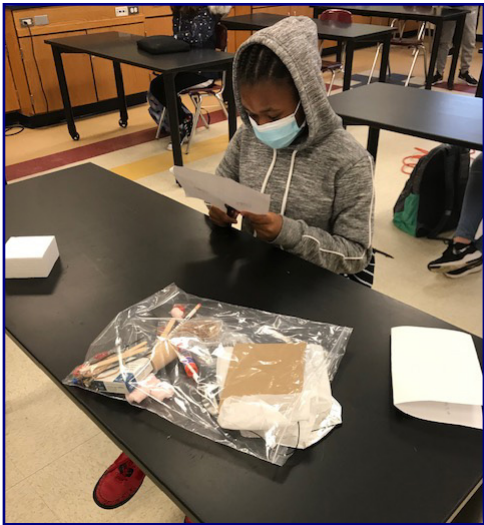
# Annual Report 2020-21



## THE SMILE PROGRAM

Science & Math Investigative Learning Experiences

The SMILE Program seeks to improve the educational outcomes of underrepresented and underserved students by giving them confidence in their academics and life skills in order to pursue higher education and career opportunities of their choice. Our work supports the University of Rhode Island’s initiatives to achieve the enrollment of a talented and diverse community of students, as well as increase first-year retention of freshmen by focusing on college preparedness of underserved pre-college students who are in grades 4 – 12. Our success is thanks to our dedicated team of SMILE staff members, club teachers/leaders, school administrators, college faculty, graduate and undergraduate students, and community members. Throughout the pandemic, The SMILE Program was able to successfully pivot to a virtual model while maintaining its hands-on integrity through take home STEM kits. We are looking forward to being back together soon and we are so very proud of all of our SMILE students, their resiliency and hunger to learn is inspiring.



## Table of Contents

Letter from the Director. . . . .	3
Our Reach . . . . .	4
Participants . . . . .	5
Year in Review . . . . .	6
Partnerships . . . . .	8
Sponsors . . . . .	9
Executive Board & Recognition. . . . .	10
Success/Alumni. . . . .	11

# MESSAGE FROM THE DIRECTOR



Dear Friends and Supporters of The SMILE Program,

It has been a challenging and rewarding 27th year of SMILE despite the Covid-19 Pandemic. We have 263 Rhode Island students participating virtually in the program this year at the elementary, middle and high school levels from six school districts, with students from Central Falls, Newport, South Kingstown, Westerly, West Warwick, and Woonsocket. SMILE staff created interesting and fun STEM activities and packed individual science kits for each student to take home or be brought to them. It was a challenge to select materials that were safe for younger siblings and still engaged SMILE students in high level activities. Their comments included enjoying seeing their other club members, learning new things with their friends, and being challenged to seek solutions. SMILE students went on virtual fieldtrips, and were able to have a college experience by taking a virtual URI tour. Our SMILE Annual Engineering and Environmental Challenges were cancelled due to Covid pandemic restrictions. SMILE teachers and SMILE staff worked tirelessly and kept students' morale high. Our teacher Professional development workshops were presented virtually as was each club meeting. A senior was awarded a \$500 SMILE college scholarship, inspired by Saul Nulman, a SMILE supporter, who said "Dreams, determination, and discipline will make you succeed." The student's accomplishments make us so proud. Not every student remains in SMILE through his or her senior year. There are 355 students who have been in SMILE for one or more years who will graduate this year whose college attendance we will track.

The SMILE Program continues to be Rhode Island's only STEM pipeline for helping diverse students develop their identity and competence as scientists in preparation for college. SMILE alumni students select STEM majors at the University of Rhode Island at a 70% rate, well above the national average of 14%.

Through stewardship projects, SMILE students have even greater positive connections to their community and environment. These included cleanups around their homes and school yard, and high school SMILE students investigated problems with water and electricity delivery to Native American reservations, critical during a pandemic.

Your support and efforts on behalf of all our SMILE students has an incredible positive effect. We appreciate and thank all of you for promoting The SMILE Program and look forward to our 28th year bringing STEM activities to Rhode Island's deserving and enthusiastic children.

Sincerely,

*Carol English*

# OUR REACH

## SCHOOLS

### CENTRAL FALLS

Ella Risk Elementary School  
Calcutt Middle School  
Central Falls High School

### WESTERLY

State Street Elementary School  
Westerly Middle School  
Westerly High School

### NEWPORT

Claiborne Pell Elementary School  
Thompson Middle School  
Rogers High School

### WEST WARWICK

Horgan Elementary School  
Deering Middle School  
West Warwick High School

### PROVIDENCE

Dr. Jorge Alvarez High School

### WOONSOCKET

Harris Elementary School  
Citizens Elementary School  
Coleman Elementary School  
Woonsocket Middle School at Hamlet  
Woonsocket Middle School at Villa Nova  
Woonsocket High School

### SOUTH KINGSTOWN

West Kingston Elementary  
Curtis Corner Middle School  
South Kingstown High School



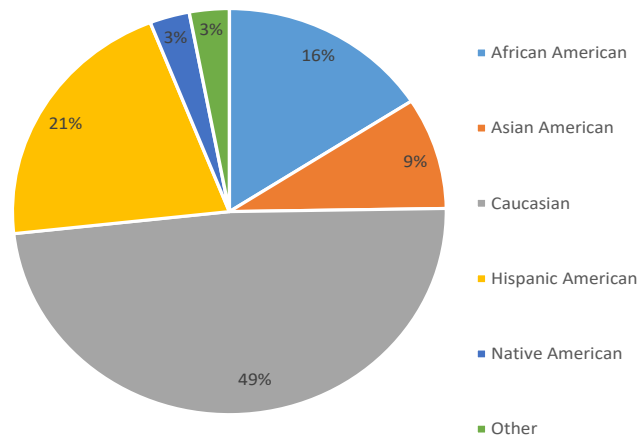
SMILE was committed to maintaining the hands-on integrity of the program. We pivoted the program to virtual club meetings during COVID 19. This meant take home STEM kits for each student.

# PARTICIPANTS

## STUDENTS BY ETHNICITY

African American	42	16%
Asian American	24	9%
Caucasian	129	49%
Hispanic American	54	21%
Native American	7	3%
Other	7	3%

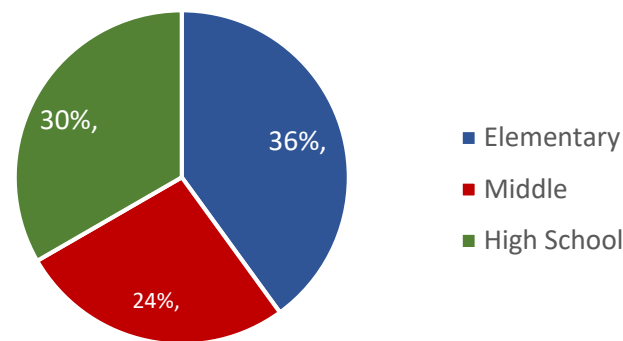
Students By Ethnicity



## STUDENTS BY GRADE LEVEL

	Students	Percentage
Elementary School	95	36%
Middle School	90	30%
High School	78	24%

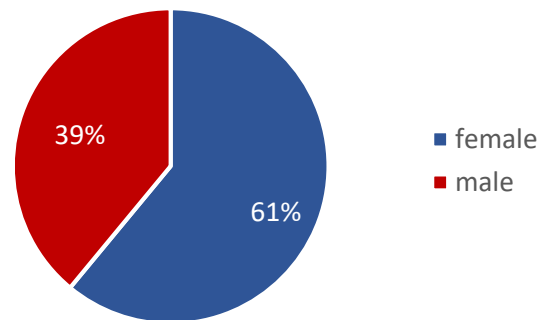
Students By Grade Level



## STUDENTS BY GENDER

	Percentage
Female	61%
Male	39%

Student By Gender





# YEAR IN REVIEW



## SMILE Teachers' Workshop August 2020

This workshop presented SMILE teachers with the new curriculum theme "Engineering Explorations." The focus on this past years' curriculum was on the interdisciplinary field of engineering. Teachers gained content knowledge through modules created for each school level (elementary, middle, and high schools) and were provided with training on a series of hands-on activities for implementation in their clubs.

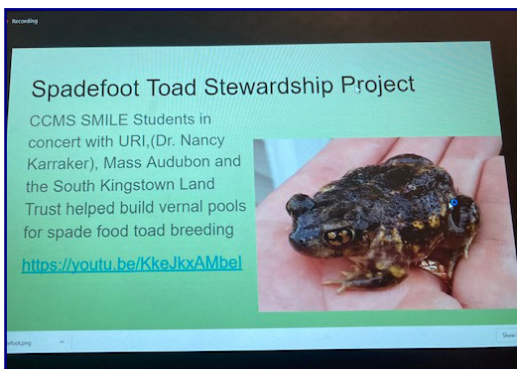


## SMILE Teachers' Workshop December 2020

The SMILE winter workshop focused on preparation for SMILE's spring curriculum, which included more hands-on STEM through virtual club meetings.

## SMILE Career Exploration Field Trips 2020-21

Although SMILE clubs functioned differently this year we were able to provide SMILE students with a variety of career explorations. Field-trips included a Cranberry bog tour, a URI tour, International Space Station, Monterey Aquarium, and the Grand Canyon.



## SMILE Stewardship 2021

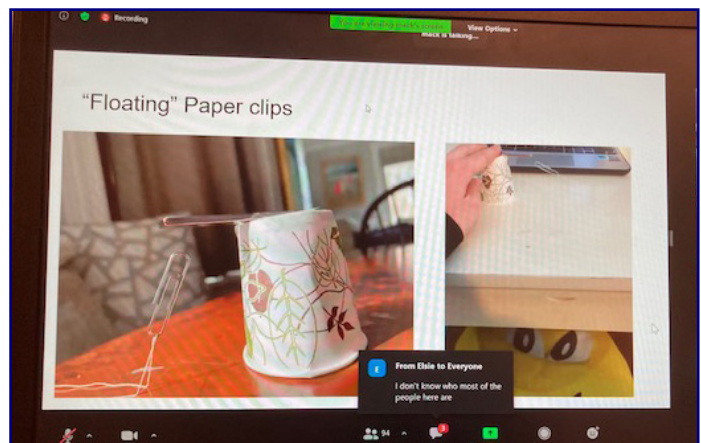
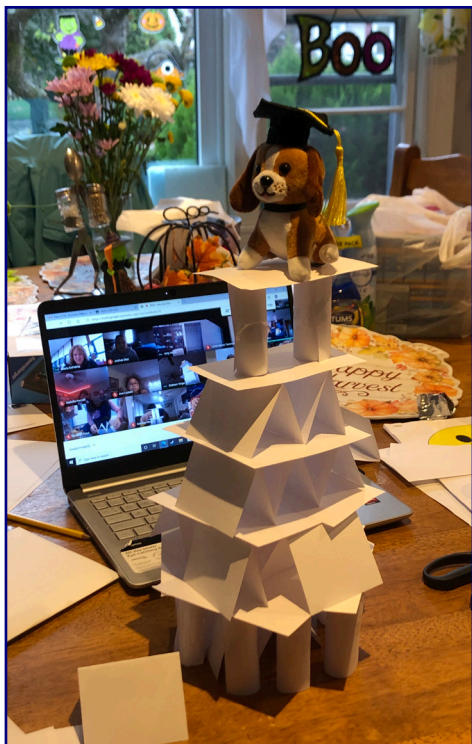
Each SMILE club participated in community/environmental stewardship as a group at their schools. Clubs stewardship projects included garden and school clean-ups, building vernal pools for Spadefooted Toads, composting and rot pots, installing garden beds, building toys and play equipment for younger students, and environmental awareness campaigns. We are proud of our SMILE students commitment to their schools and wider community.



## SMILE End of the Year Celebration 2021

Due to the Covid-19 pandemic SMILE clubs were unable to attend their regularly scheduled spring events including the 4th grade Ecology Field Day, 5th grade Elementary Outdoor Science Adventure, Middle School Engineering Challenge, and High School Engineering Challenge. Instead, SMILE clubs joined together for an End of the Year Celebration. The students from each club, at each school level, had the opportunity to present the work they did in their clubs. Everyone had a fabulous time and really enjoyed seeing what other clubs from around the state did.

***This year marked SMILE's 27th year. The success of The SMILE Program is due to the dedication of our teachers and students; collaboration with URI, school districts, local communities and mentor volunteers; and support from private foundations, corporations, and donors.***





# PARTNERSHIPS

SMILE Facilitated the Engagement of Industry,  
University Faculty and College Student Mentors

## SMILE Teachers Professional Development Workshops

URI faculty and industry experts made presentations at the Teachers Professional Development and Workshops

## Challenge Weekends, Elementary Outdoor Science Adventure and Elementary Ecology Field Day Mentors

Amgen  
Schneider Electric  
Toray Plastics  
National Society of Black Engineers (NSBE)  
Natural Resource Science Students  
Society of Women Engineers (SWE)  
American Society of Mechanical Engineers (ASME)  
URI Society of Hispanic Professional Engineers (SHPE)  
URI Center for Student Leadership  
American Indian Science & Engineering Society (AISES)  
Advancing Hispanics/Chicanos & Native Americans in Science (SACNAS)  
Tau Beta Pi  
Student National Pharmaceutical Association (SNPhA)  
College of the Environment and Life Sciences Graduate Students

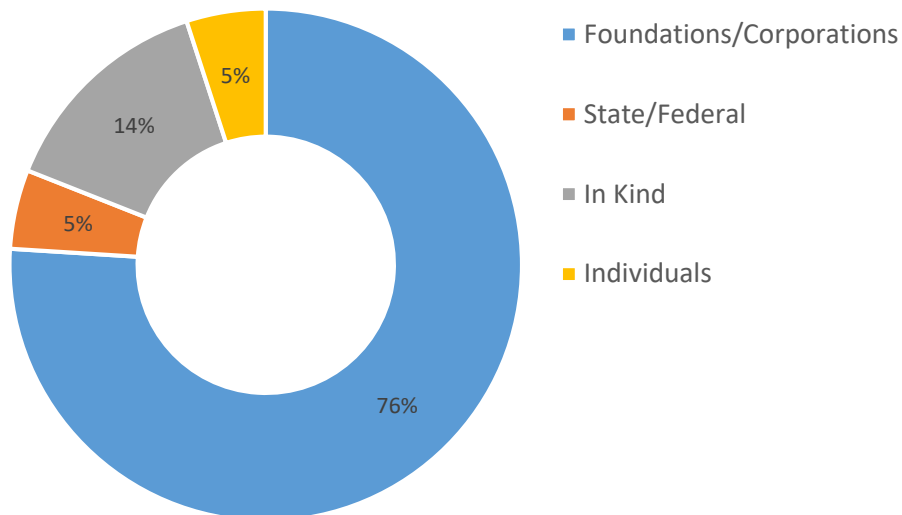
SMILE URI partners in pre-college STEM outreach activities.

URI Center for Student Leadership  
URI College of Engineering  
URI Graduate School of Oceanography

Steere Engineering  
URI Talent Development

## FUNDING SOURCES

## Funding Sources 2020-21





# SPONSORS

*The SMILE Program gratefully acknowledges the following sponsors for their support*

Anonymous	Schneider Electric
Amgen Foundation	SPIE
American Honda Foundation	Steere Engineering
Amica	Toray Plastics, America, Inc.
Arnold Lumber	University of Rhode Island
Boys & Girls Club of Providence	van Beuren Charitable Foundation
Connecting For Children and Families	Verizon Foundation
Constellation, an Exelon company	YMCA of Greater Providence
Epivax	Central Falls School Department
Dassault Systemes	Newport School Department
Graphic Expressions	Providence School Department
June Rockwell Levy Foundation	Providence Boys & Girls Club
Nordson Corporation Foundation	South Kingstown School Department
Ocean State Charities Trust	Westerly School Department
Pfizer	West Warwick School Department
Ramsey McCluskey Family Foundation	Woonsocket School Department
Red Sox Foundation	

**We would also like to thank our Individual Supporters, who are vital in helping The SMILE Program to continue its mission**

# EXECUTIVE BOARD

## SMILE STAFF

Carol Englander  
Director

Claudia Hoddersen  
Curriculum Specialist

Kaitlyn Czap  
Development and  
Publications Coordinator

Jo Ann Basel  
Curriculum Specialist

Samantha Johnson  
Curriculum Specialist

## BOARD OF DIRECTORS

John Peterson  
President

John Mcray Jr.  
Vice President

Ruth Jarrett  
Secretary

Fran Alexacos  
Treasurer

Malcolm Spaulding  
Board Member

Glenda Kirby  
Board Member

Augusto Gomes  
Board Member

Neil Nachbar  
Board Member

John Riendeau  
Board Member

Cathy Valentino  
Board Member

# PROGRAM SUCCESS

## 2020-21 SMILE High School Graduates

1. 13 SMILE high school seniors students graduated high school.
2. Slected Colleges and Universities: University of Rhode Island, Champlian College, Olin College.

## COLLEGE ENROLLMENT DATA 1994-2020

Source: College Enrollment by Participants in The SMILE Program 1998-2020  
URI Office of Institutional Research, May 2019

1. Since its founding in 1994 to 2018, 4219 students have participated in The SMILE Program.
2. The high school graduation rate for students that participated in SMILE for one or more years is between 90% and 100%.
3. The college enrollment of students who we were able to track using the National Student Clearinghouse is 67%. In 2018, 75% of all SMILE students who graduated immediately enrolled in college. Among low income students only 44% immediately enroll in college (2014 RI Kids Count Fact Book).
4. Since 1998, former SMILE participants who graduated high school have attended 370 different colleges and universities with locations in 33 different states plus the District of Columbia and Puerto Rico.
5. Between 1998 and 2020, 426 SMILE alumni have enrolled at URI and 86% pursued STEM majors.
6. In 2020, 28 SMILE alumni enrolled at URI, 86% of them are in STEM majors (Note: only 14% of all US college undergraduates are enrolled in STEM according to a US Dept. of Education Report).
7. For students in SMILE for three or more years, the ratio of students attending college versus those who did not attend college is approximately 2:1.
8. 100% of the students in SMILE for more than 7 years went to college.
9. In 2021, 155 students who were in SMILE graduated high school, and 104 went to college immediately in the fall. 9.

## SUCCESS STORIES

**This year's graduating SMILE seniors are attending various colleges and universities including University of Rhode Island, Rhode Champlain College, and Olin College.**

**The SMILE Program congratulates all 13 SMILE seniors class of 2021 and wishes them success in their academic and professional careers!**



---

The SMILE Program  
University of Rhode Island  
90 Lower College Road, Roosevelt Rm 1  
Kingston, RI 02881-0800



[www.uri.edu/smile](http://www.uri.edu/smile)

---