

URI Informed

THE URI EMPLOYEES' NEWSLETTER

Vol. 32 Issue 2

FALL 2024

President Parlange Celebrates Year of 'Tremendous Growth and Success for URI' in Annual Address

by Dawn Bergantino

University of Rhode Island President Marc Parlange delivered his third annual State of the University address at Edwards Hall on Wednesday afternoon, celebrating a year of “tremendous growth and success for URI.”

Surrounded by students, faculty, staff, alumni, and Board of Trustees members, Parlange celebrated the University’s growth and many successes over the past

year. In a speech lauding the contributions of the University community, he detailed URI’s progress toward achieving the goals and objectives set forth in Focus URI, the University’s 10-year strategic plan, while also looking forward.

The plan, introduced in February 2023 during the president’s first State of the University address, lays out four strategic priorities: Broadening Our Impact, Enhancing

continued on page 2



URI President Marc Parlange delivered his third State of the University address on Sept. 25. *URI photo by Michael Salerno*

THE
UNIVERSITY
OF RHODE ISLAND



URInformed

Nancy Gillespie, Editor
Charlene Dunn, Assistant Editor

Editorial Board

Laura Kenerson
Kathie McKinstry
Laura Shea
Shawn Simmons (retired)

If you have a suggestion for an article about a co-worker or colleague, or perhaps information about an event, or simply have an interest in being involved with the newsletter, you may send your request to:

URInformed, 73 Upper College Road,
Kingston Campus
or contact us by e-mail at:
NGillespie@uri.edu

The editorial board reserves the right to select the material printed and to edit it to conform to space restrictions.

Please get involved! This is your newsletter and we need your support to make it work.

URI is an equal opportunity employer committed to the principles of affirmative action and values diversity.

President's Address...continued from page 1

Student Achievement, Fostering an Inclusive Culture, and Powering the University of the Future.

Recounting—among other achievements—URI's recent ranking as the number one public university in New England by The Wall Street Journal; a record number of 26,900 first-year undergraduate applications for the fall semester; athletic success in women's rowing and men's track and field; as well as new recognitions and favorable rankings for the Colleges of Nursing and Pharmacy, Parlange underscored how each complemented the four pillars of the plan and set the University on a path toward the future.

"These accomplishments fill me with great pride," said Parlange. "I am so proud of all that we have achieved this year—and of the fact we did it together."

Importantly, Parlange thanked Rhode Island voters, Gov. Dan McKee, Rhode Island Speak-

er of the House K. Joseph Shekarchi, Rhode Island Senate President Dominick Ruggerio, and members of the General Assembly for their partnership and ongoing support of the University.

"When I consider the many successes we've celebrated this year, I am grateful for Rhode Islanders who supported several bonds that have helped us physically transform our campuses," he said. "We officially began Phase II of the Narragansett Bay Campus revitalization project and the long-awaited start of the construction of a new Fine Arts Center, both of which were made possible through their support."

"Through these two projects alone, we are positioning ourselves as leaders in the Blue Economy, helping to attract companies, inspire startups, and support ocean related research—and with new fine arts facilities, we will better support the creative endeavors of our students, staff, faculty, and alumni while bringing the broader community to our Kingston Campus."

Parlange emphasized the importance of Question 2 on the upcoming November ballot that will ask voters to approve a \$160.5 million higher education bond—\$73 million to modernize and transform Whipple Hall at Rhode Island College into a dedicated home for the Institute for Cybersecurity & Emerging Technologies, and \$87.5 million to be used for the construction of a new biomedical sciences building at URI's Kingston Campus that will support research into the treatment and prevention of dementia, Lyme disease, Alzheimer's, ALS, and other diseases.

continued on page 3



Table of Contents

<i>President's Address</i>	<i>p.1</i>
<i>VP Human Resources</i>	<i>p.4</i>
<i>URI Fall Update</i>	<i>p.4</i>
<i>Word Search</i>	<i>p.5</i>
<i>Move In</i>	<i>p.7</i>
<i>Comings and Goings</i>	<i>p.8</i>
<i>40 Years of Service</i>	<i>p.11</i>
<i>Word Search Winner</i>	<i>p.11</i>
<i>Pets Corner</i>	<i>p.12</i>
<i>Cook's Corner Recipes</i>	<i>p.15</i>
<i>YES on Bond #2</i>	<i>back cover</i>

President's Address...continued from page 2

“Through the work of our researchers, the University is not only advancing new knowledge but driving meaningful change and setting a new standard for how flagship public research universities can contribute to the betterment of society and the global human condition,” said Parlange.

Through the course of his roughly 25-minute speech, Parlange highlighted various student, faculty and staff achievements—from student and faculty scholarships and fellowships; to groundbreaking new research into ADHD, Alzheimer’s disease, microplastics and the benefits of offshore wind; to global supply chain competitions and renewable energy and energy efficiency achievements.

He highlighted the recent decision by the General Assembly to explore the feasibility of establishing a public college of medicine at URI, and pointed to the appointment of three new deans in health-related colleges: Kerry LaPlante in the College of Pharmacy, Danny Willis in the College of Nursing, and Patrick Vivier in the College of Health Sciences, who are all already actively shaping the impact URI has in critical areas of health and wellness.

“URI can build on the significant contributions we already make to health care to further meet the health care needs of the state, including addressing the primary care shortage,” he said.

Parlange noted that, despite a challenging year related to federal changes to student aid, the University had awarded a record amount of student financial aid—more than \$150 million—including to Talent Development and Narragansett Scholarship students.

“We are dedicated to making a URI education attainable for all,” he said. “As Rhode Island’s university we are not only enriching the academic experience, but also reinforcing a culture of giving back, where every individual has the support to thrive and contribute meaningfully to society.”

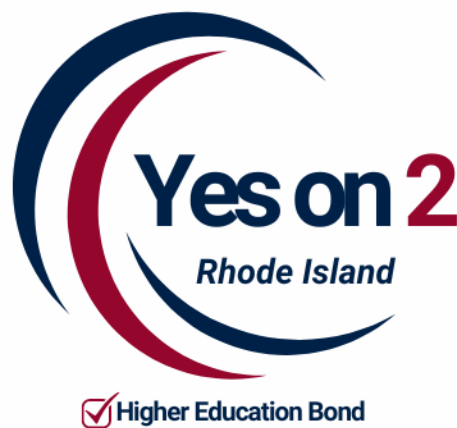
As part of the program, three members of the URI community delivered remarks about their work at the University. Shelagh Donohoe, women’s rowing head coach, spoke to the team atmosphere that exists at the University and, specifically, within the athletics department. It is that team environment, she said, that has

helped the women’s rowing team capture 10 Atlantic 10 championships during her nearly two-decade tenure, including capturing the title this past spring.

Bhavya Chatragadda, an undergraduate student studying microbiology and molecular neuroscience, spoke of her desire to attend her state’s flagship university. A native of Lincoln, Rhode Island, Chatragadda called URI “the perfect choice for me” and said the undergraduate research opportunities she engaged in at URI have prepared her “for the next exciting step in my journey,” which will be medical school at Brown University.

Travess Smalley, an assistant professor in the Department of Art and Art History, spoke about AI in art, and his work as an artist using computation to make generative image systems. He wowed the auditorium with animated displays of his work on screen, and he spoke about the significance of the new Fine Arts Center that is currently under construction.

To conclude the event, Donohoe, Chatragadda, and Smalley joined Parlange on stage for a discussion that ranged from their work, the URI community, and their favorite spots on the URI campus. “Each of them has found personal and professional success with a unique URI experience to share,” Parlange said.



Becky Hill Appointed Inaugural URI Vice President for Human Resources

by Tony LaRoche

The University of Rhode Island has named Becky Hill, an experienced and innovative higher education leader, as its inaugural vice president for human resources. Hill, who currently serves as associate vice president for human resources at Cornell University, was appointed following a competitive national search. She will begin her role at URI on Oct. 28.

“We are excited to welcome Becky as URI’s first human resources vice president,” said President Marc Parlange. “This new position reflects an increased, strategic, and vital investment in human resources at URI and in the services and resources the HR division provides to our University community. That investment is guided by our strategic plan, Focus URI, which calls on us to attract, recognize, and retain outstanding faculty and staff, and to invest in and implement administrative and financial practices that position the University for long-term success.”

In this new role, Hill will develop and direct a strategic vision for human resources at the University, including HR structure, practices, culture, and programming. She will report to the University president and will serve as a member of the University’s leadership team.

“People are the future of URI,” said Hill. “They will fuel the next wave of research and innovation, contribute to unprecedented scholarship, and propel the University toward further distinction. I am elated to join the team at URI and look forward to enhancing the strategic impact of this incredible community, together.”

At Cornell, Hill served as the deputy to the vice president and chief human resources officer, providing strategic leadership and direction while overseeing HR information systems and technology, benefits services strategy and administration, staff and labor relations, workforce planning and compensation, HR policy and compliance, and finance and administration. She also played a central role in leading cultural transformation within Cornell’s HR community.

During her eight-year tenure at Cornell, Hill served in several positions of increasing responsibility and leadership, including as director



Becky Hill

of human resources for eCornell, the Ivy League institution’s online learning platform. Partnering closely with the vice provost and executive team, she helped profitably scale the enterprise and proactively consulted on organizational goals and HR strategy. She also served as interim senior director of program delivery for eCornell, where she was responsible for the delivery of Cornell academic microcredentials to more than 110,000 students annually.

She also was assistant director of human resources and HR business partner for Cornell’s facilities and campus services division. Prior to Cornell, she served as a global personnel specialist and outreach coordinator with IMB.

Hill possesses an impressive record of community service, serving on the boards of directors of both the SUNY Cortland Child Care Center and Hospicare and Palliative Care; as a member of the Society for Human Resource Management national organization and Tompkins County chapter; and as the volunteer coordinator for Ithaca Welcomes Refugees. She earned a Bachelor of Fine Arts degree from Syracuse University, an executive master’s degree in human resources management from Cornell, and an eCornell certificate in human resources.

continued on page 11



FALL PICNIC



N	F	L	O	R	V	K	O	O	Z	I	E	S
U	R	I	C	E	S	B	U	R	G	E	R	P
F	I	C	T	C	E	U	F	O	O	D	I	A
E	E	E	O	C	M	G	U	U	A	A	F	R
I	N	C	B	O	A	S	N	L	N	Y	P	K
P	D	R	E	S	G	R	A	S	S	Y	M	L
N	S	E	R	O	M	S	O	D	A	S	A	E
I	D	A	E	L	O	H	N	R	O	C	C	R
K	I	M	U	T	S	E	I	K	O	O	C	S
P	K	Q	A	G	U	I	T	A	R	O	Z	V
M	A	T	V	N	Y	F	A	M	I	L	Y	N
U	O	L	S	U	N	S	C	R	E	E	N	U
P	I	C	K	L	E	B	A	L	L	R	I	F

1. Bugs
2. Burger
3. Campfire
4. Cooler
5. Cookies
6. Cornhole
7. Family
8. Food
9. Friends

10. Fun (4x)
11. Games
12. Grassy
13. Guitar
14. Ice Cream
15. Kids
16. Koozies
17. October
18. Pickleball

19. Potato Salad
20. Pumpkin Pie
21. Saugys
22. Smores
23. Soccer
24. Sodas
25. Sparklers
26. Sunscreen

DIRECTIONS: The object is to find the 26 hidden words within the grid. Words can be found horizontally, vertically, diagonally, backwards or forwards. Return the completed wordsearch to Nancy Gillespie, Communications and Marketing, Alumni Ctr, 73 Upper Coll Rd. Please include your name, address and e-mail with your entry. A drawing of all correct entries will determine the winner. A URI prize will be given to the winning entry.

The winner will be announced in the next issue of URInformed. Good Luck!

Name _____ Dept. _____

Campus Address _____

Phone Ext. _____ E-mail _____

URI Welcomed More than 17,000 New and Returning Students to Its Campuses

by Kristen Curry

The University of Rhode Island is set to welcome thousands of new and returning students for the start of the 2024-25 academic year. **Fall semester classes officially began at the state's flagship public research university on Sept. 4.**

Student move-in days were Friday, Aug. 30, and run through Monday, Sept. 2. URI President Marc Parlange greeted and visited with students and families throughout move-in and give new students their official New Ram Welcome on Sept. 3.

RhodyFest took place Sept. 1 on the URI Quadrangle and in front of the Memorial Union.

Over 3,100 new students attended orientation this summer, getting a better understanding of academics and student life at URI. Welcoming events for new undergraduate students took place as part of O-Week (Aug. 30–Sept. 6) leading up to the start of classes.

President Parlange delivered the annual **State of the University Address** on Wednesday, Sept. 25, in Edwards Auditorium.

Interest in the state's flagship research university reached an all-time high this year. URI received a record 26,900 first-year undergraduate applications for the fall 2024 semester, as well as a record number of applications to its graduate programs. Approximately 3,100 first-year students will join more than 500 transfer students, more than 2,000 graduate students, and thousands of returning URI students, to comprise a student body of more than 17,000 when classes start.

URI's **Graduate School** also saw an increase of more than 25% in applications and a 50% increase in inquiries last year.

Students at URI have more than 200 student organizations to choose to be involved with. New and returning students can access [<https://urinvolved.uri.edu/>](https://urinvolved.uri.edu/) to find student organizations to join. The new platform, launched last year, saw nearly 1,000 events submitted in its first year.

About our students

-- Approximately 5,500 students will live in 26 on-campus residence halls this fall, including 14

Living and Learning Communities. More than 600 students will reside in 16 fraternity/sorority houses on campus, another 73 will live in designated International Engineering Program housing, and 35 Talent Development program scholars will reside in the Talent Development Achievement House.

-- This fall's student body represents **47 different states** and more than 65 countries.

-- More than 30% of new students are the first in their family to attend college.

-- URI is welcoming 311 students to the **Talent Development program** this year. TD has a total of 973 scholars at the University and a "TD Nation" alumni base more than 4,700 strong.

-- With six sophomores selected this year, URI is the top-producing institution of **NOAA Hollings Scholars** in the nation for the second time in three years.

-- URI was also the only public institution represented among this year's 14 Rhodes finalists in District One (Boston).

-- Approximately **\$1.2 million in nationally competitive awards** went to URI students and recent alumni to pursue high impact educational opportunities, including 10 U.S. Department of State **Gilman Scholars** and four U.S. Department of Defense Boren Scholars.

Fall campus happenings

Nearly 400 students involved in Greek Life at URI are volunteering to help during first-year move in. URI **Greek Life** was recognized as a YMCA Y Hero recently, for students' charitable work with the YMCA last year. In spring 2024, the Greek community at URI raised \$170,000 during Greek Week to support Project Outreach, the Michael J. Fox Parkinson's Research Foundation and Ronald McDonald House.

The annual award-winning **Free Farmers Market** offers fresh produce grown in URI's Teaching Garden and at East Farm free to URI students. The market takes place weekly on Thursdays on the Quad, with a new satellite option outside of Mackal-Tootell through October.

This year's fall **Honors Colloquium** will examine "Democracy in Peril." The free annual edu-

continued on page 14

URI Welcomes about 5,500 Students During Lively Move-in Weekend

With over 17,000 students enrolled, URI began classes Sept. 4

by Tony LaRoche

At Barlow Circle, the music set the beat for a block party atmosphere. A line of cars, trucks and SUVs snaked down Campus Avenue to Butterfield Road. An army of hundreds of volunteers waited to help first-year students move into their new homes for the academic year. A grill cranked out food to fuel the work.

"It's an amazing day," URI President Marc Parlange told a TV reporter on Friday, Aug. 30, as move-in weekend rolled out the welcome mat to new students and transfers. "The weather really has cooperated this morning. It's cool, it's sunny, and there's so much energy. It's fantastic, all the volunteers that we have helping this year."

President Parlange and Mary Parlange were among the first to greet students as they arrived at Hillside Hall on Friday morning. A total of 1,200 students moved into their residence halls on Friday. For the weekend, about 6,000 students, including about 3,000 first-year students, moved on campus, to live in residence halls, Greek Life houses, and other halls. In all, URI will welcome more than 17,000 students when fall classes started on Sept. 4.

During move-in weekend, hundreds of volunteers – faculty, staff, ROTC members, and hundreds of Greek Life students, among others – provided an upbeat atmosphere, greeting new and returning students with smiles and carrying their belongings into their new campus homes. Feeding the frenzy of activity was URI Police Officer Paul Hanrahan, who manned a grill all four days and cooked breakfast and lunch for volunteers, students and families – dishing out a total of 1,876 hotdogs, 500 grilled cheese sandwiches, 800 pancakes, and 20 dozen donuts. He also moved his daughter Alexa, a sophomore nursing major, into her residence hall over the weekend.

For many of the volunteers, it was a way to give back.

"I was a first-year student last year. I'm so excited to help first-year students move in and get them excited to come to URI because it's an exciting place," said Ayomide Olagundoye, a sophomore biomedical engineering and Spanish major.

Olagundoye helped pump-up the arriving students and their families as they arrived on

continued on page 13



Personnel Script

Job Opportunities

The classified and non-classified application process is now automated so that you can apply on-line for positions here at the University. You will also be able to review the status of your application during the recruitment process, update your on-line application, and apply for positions that become available in the future. For the job opportunities visit:

<https://jobs.uri.edu>

We Welcome the Following People to our Community...

Aser Abbas (Civil&EnvironmentalEngineering), Sophia Abbot (Instructional Development Pgm), Kate Adams (GSO Marine Office), Cassandra Altreche (Undergraduate Admissions), Michael Anderton (Dining Board Operations), Sara Andreozzi (Communicative Disorders), Timothy Bannin (Chemistry), Charlene Baton (Custodial Services), Lauren Bazinet (Biomedical & Pharmaceutical Sc), Stacey Bevan (Nursing Instruction), Jamie Blalock (Hum Developmt & Family Studies), Jennifer Bose (Asst. VP Facilities), Kimberly Boudreau (Dean Environment& Life Science), Evan Bowen (GSO Marine Office), Matthew Brown (Dining Board Operations), Lindsey Callahan (Dean Education), Adam Capwell (Info Tech Services), Melissa Carr (Pharmacy Practice), Kathleen Carroll (CELS Academic Unit 2), Aidan Chatwin-Davies (Physics), Adam Chupp (CELS Academic Unit 3), Keith Clavin (Professional & Public Writing), Nathan Cook (Psychology), Justin Cooke (GSO Research), Michael Coutts (Women's Softball), Anne Culbert (CELS Academic Unit 2), Nolan Cumiskey (Custodial Services), Ricardo De Ycaza (CELS Academic Unit 2), Jacob DeBlois (Kinesiology), Tyler Delaney (Counseling Center), Anthony Diaz-Perez (Dining Board Operations), Emily Douglas (Enterprise Risk Management), Edward Draper (Dean Business), Moge Du (GSO Faculty), Andrei Ebrahimpour (Property & Support Services), Laura Eme (CELS Academic Unit 3), Christian Esteves (Computer Science), Gabrielle Fage (Custodial Services), Amy Fernands

(Gerontology), Laura Ferrell (Undergraduate Admissions), Anthony Fioravanti (CELS Academic Unit 3), David Fischer (Men's Baseball), Michael Fitzpatrick Jr (Human Resource Administration), Suzann Francisco (Dean Engineering), Johanna Ganglbauer (Kingston Library), David Geyer (Nursing Instruction), Emily Giglio (Computer Science), Steven Gronski (HRL M&R Facilities), Navya Gujjarlapudi (Institutional Research Office), Brittany Hanley (CELS Academic Unit 3), Kevin Heiss (Men's Baseball), Jack Hertz (Athletics Strength Condition), Shanice Holcomb (Dining Board Operations), Eric Hoyt (Economics), Daniel Hunt (Journalism & Public Relations), Vahid Jahangiri (Mech. Ind. & Sys. Engineering), Jennika Jenkins (Psychology), Reid Kappler (Custodial Services), Nicole King (School of Education), Ahyoung Ku (GSO Research), Devina Kumar (Physical Therapy), Pamela LaBreche (Small Business Development Ctr), Sky Laurent-Kingsley (Summer/Winter Session Admin), Kimberly Lavoie (Grad Library&Inform Studies), Thomas Lavoie (Pharmacy Practice), Christopher Law (Women's Swimming), Allison Lenox (Clinical Practice&Partnerships), Adam Levin (Music), Pamela Lezaeta (CELS Academic Unit 2), Danwei Li (Languages), Pengyu Liu (Mathematics), Kaleel Mahmood (Computer Science), Matthew Martin (Dining Catering Operations), Claire Mayorga (GSO Marine Technicians), Liyonna McCallum (HRL Residential Education), Jessica McCarthy (Business Instruction), Lorrie McCarty (Provost for Academic Affairs), Peter McLaughlin (Political Science), Sarah McMahan (Univ Coll for Academic Success), Paul Megna (HRL M&R Facilities), Adrienn Mendonca-Jones (Professional & Public Writing), Shelly Miller (GSO Grant Management Support), Amy Mills (Biomedical & Pharmaceutical Sc), Ann Marie Moraitis (Nursing Instruction), Cara Moreau (Women's Lacrosse), Austin Morris (Police), Colin Murphy (Capital Construction), Jennifer Napiorski (HRL Residential Education), Timothy Nesselrodt (Recreational Services), Genevieve Oatley (Custodial Services), Amanda O'Hara (Enrollment Services), Ariel Ollikainen (GSO Marine Office), Erin Peck

continued on page 9

Comings and Goings...continued from page 8

(GSO Faculty), Robyn Perry (Nutrition & Food Sciences), Aneta Pesare (Dining Board Operations), Paraskevi Petropoulou (Languages), Vanessa Pichardo (Nutrition & Food Sciences), Chandler Place-Downie (Enrollment Services), Ananya Pujary (Institutional Research Office), Armani Rios (Dining Board Operations), Annexsis Rodriguez-Figueroa (Dining Board Operations), Bryan Roy (CELS Academic Unit 2), Olga Ruiz de Panciera (Languages), Swayamsiddha Sarangi (Economics), Jillian Scheer (Psychology), Veronica Seeram (Instruction Support), Samantha Silvestri (CELS Academic Unit 3), Andrew Single (CELS Academic Unit 2), Marissa Soistman (Women's Volleyball), Samantha Sorrells (Parking Services), Grace Steensma (Sports Information), Ryan Sullivan (Women's Volleyball), Gabrielle Sumney (Film Studies), Daniel Tacey (Dining Board Operations), Hongbing Tang (CELS Academic Unit 1), Kierstan Thomas (Gender and Women's Studies), Hayley Thompson (Human Resource Administration), Jessica Tolchinsky (Mathematics), Rika Tsuji (Philosophy), Sourav Verma (Chemical Engineering), Kiyomie Warsaw (Dining Board Operations), Colby Whaley (Automotive), Shyanne White (Enrollment Services), Abbie Whitford (CELS Academic Unit 1), Steven Wilson (Theatre), Breanna Wisseman (Kinesiology), Jamie Woelmer (Athletics Strength Condition), David Wright (Engineering Computer Center), Rebecca Wrightson (Art), Pei-Chin Wu (GSO Faculty), Molly Yanity (Communication Studies), Tingting Zhao (Business Instruction), Kathryn Zimmerman (Disability, Access & Inc)

... and Say Goodbye to ...

Fathi Abdelsalam (Research Office), Angel Agu (Women's Volleyball), Ryan Alberghini (Dining Board Operations), Michael Anzalone (Graduate School), Kimberly Arcoleo (Nursing Instruction), Richard Armstrong (Kinesiology), Laura Arrighi (Dean Environment & Life Science), Leslie Barnes (Gerontology), Trevor Baynard (Dining Board Operations), Julia Bingham (GSO Coastal Resources Center), Kevin Biondolillo (Counseling Center), Kyle Black (HRL Residential Education), Matthew Breitbarth (Women's Volleyball), Lyn Budaj

(Enrollment Services), Curiney Cain (Dining Board Operations), Paul Cannon (HRL M&R Facilities), Kelly Cecchini (Professional & Public Writing), Kelsi Chappell (Nutrition & Food Sciences), Lori Ciccomascolo (VP Student Affairs), Jacob Clemen (Univ Coll for Academic Success), Sharon Clossick (Clinical Practice & Partnerships), Anthony Coetzer-Liversage (Psychology), Anne Marie Coleman (Human Resource Administration), Stephen Conca (Dining Board Operations), Victoria Constantin (Women's Softball), Megan Conti (Dining Board Operations), Paul Cooney (Economics), Rebecca Crosby (GSO Grant Management Support), James Cunningham (Men's Basketball), Sarah Daly-Van Oot (Communication Studies), Cecilia Deschenes (Business Instruction), Megan Doner (CELS Academic Unit 1), John Duggan (HRL M&R Facilities), Willow Dunster (CELS Academic Unit 3), Laura Eldridge (Professional & Public Writing), Eliza Etter (Undergraduate Admissions), Carolyn Evangeline (Communicative Disorders), Sarah Feldstein Ewing (Psychology), Aaron Fitzsenry (Dining Board Operations), Brennan Fleming (Athletics Strength Condition), Michelle Flippin (Communicative Disorders), Maquisha Ford-Mullins (Business Instruction), Keegan Foster (CELS Academic Unit 2), Michael Foster (International Education Office), Thais Fournier (GSO Coastal Resources Center), Chloe Gilligan (CELS Academic Unit 3), Whitney Goldstein (Women's Softball), David Greenway (Business Instruction), Richard Hargis (GSO Marine Office), Mark Hartman (Kinesiology), Tyler Hastedt (Athletics Marketing), Wei He (Chemistry), William Healey (HRL M&R Facilities), James Histen (Custodial Services), Rabia Hos (School of Education), Karen Hudson (Psychology), Ariana Huffmyer (CELS Academic Unit 3), Benedict Hyun (Psychology), Matthew Jacques (Capital Construction), David Jacques (Custodial Services), Robin James (Communication Studies), Kenneth Johnson Jr. (Men's Basketball), Charles Johnston (Dining Board Operations), Karlis Kaugars (Vice Pres for Admin & Finance), Kaylyn Keane (CELS Academic Unit 1), Takima Keane (Women's Basketball), Kenneth Kenyon (HRL Facilities), Ammina Kothari (Harrington School), Kenneth Kwarciany (Inter-

continued on page 10

Comings and Goings...continued from page 9

national Education Office), Sally Lambert (Enrollment Services), Gina Lopardo (Global Initiatives), Kristin Magan (Nursing Instruction), Michele Martel (Special Pgm for Talent Development), Dennis McCarthy (Small Business Development Ctr), Patrick McIlveen (Interdiscp Neurosc Prog), Maha Mitrelis (Business Instruction), Soheyl Moayed-Amini (Sociology & Anthropology), Robert Mong (GSO Marine Office), Shania Moretti (Learning Assistance Center), Cameron Morin (Dining Board Operations), Richard Morton (Dining Board Operations), Mary Mullane (Summer/Winter Session Admin), Frank Mullins (Business Instruction), Samantha Neary (Dean Engineering), Brianne Neptin (Dean Arts & Sciences), Melissa Nicholas (Grad Library & Inform Studies), Jillian Oates (Child Development Centers), Sean O'Brien (Men's Baseball), Douglas Ouimette (Center Career Experiential Edu), Andrea Petruzzo (CELS Academic Unit 2), Nahendra Pierre (HRL Business Operations), Caitlin Randall (CELS Academic Unit 3), Mary Elizabeth Reilly-McGreen (Communications & Marketing), Jan Rines (GSO Research), Chelsea Riordan (Professional & Public Writing), Kirk Robinson (Univ Coll for Academic Success), Joy Robinson (Nutrition & Food Sciences), Bianca Ross (CELS Academic Unit 2), Luis Alberto Sanchez Vargas (CELS Academic Unit 3), Michael Sanda (Dining Board Operations), Steven Sarabia (Dining Board Operations), Shannon Sermini (Univ Coll for Academic Success), Barbara Shafer (Public Safety: Commun & Techn), Megan Shoniker (Women's Basketball), Kaden Silva (Custodial Services), Matthew Silvia (Dining Board Operations), Andrew Simmons (Honors Program), Dolores Smith (School of Education), Steven Smith (Dining Board Operations), Jason Sprague (Custodial Services), Terri Stafford (Kingston Library), Jakayla Steele (Dining Board Operations), Melissa Stevens (Honors Program), Carl Stiles (Memorial Union), Kathleen Sullivan (Dean Nursing), Patricia Testa (Athletics Administration), Carol Thornber (CELS Academic Unit 2), Lisa Tom (Art), Catherine Trebino (CELS Academic Unit 3), Christian Tulungen (CELS Academic Unit 2), Loes van Dam (GSO Research), Angeline Vega (Undergraduate Admissions), Victoria

Viveros (Disability, Access & Inc), Elissa Walton (Dining Board Operations), Robyn Wojeck (Nursing Instruction), Kathryn Wolfe (Hum Developmt & Family Studies), Nina Yorty (Custodial Services), Margaret Young (Dining Board Operations), Daniel Zweifach (Commu-

... and Best Wishes To Those Who Retired

Bradley Baseler (Maintenance Services), Jieling Chen (Info Tech Services), Sharon Clements (GSO Grant Management Support), Susan Coccio (Health Services), Cornelis De Groot (School of Education), Robert Engstrume (Dining Board Operations), Robin Favino (Dining Board Operations), Nancy Gardner (Human Resource Administration), Cheryl Grasso (Pharmacy Practice), James Guadagni (Custodial Services), Elizabeth Howlett (Provost for Academic Affairs), Anne Hume (Pharmacy Practice), Eric Jacquart (Health Services), Kevin Jacques (Custodial Services), Paul Lariviere (Athletics' Custodial Services), Robert Lessor (Dining Board Operations), Linda Latham (Health Services), David Lavallee (Communications & Marketing), Angelo Lucia (Chemical Engineering), Mary Macdonald (Kingston Library), Katharine Mcduffie (CELS Academic Unit 2), Patricia Murray (Dean Pharmacy), David Nelson (CELS Academic Unit 3), Gail Paolino (GSO Grant Management Support), David Porter (Info Tech Services), Jacob Richards-Hegnauer (Theatre), Deborah Salisbury (Dining Board Operations), Jane Schmitz (Dean Health Sciences), Gail Scowcroft (GSO Research), Dawn Smith (Human Resource Administration), Gary Stoner (Psychology), Patricia Stout (Nursing Instruction), Ann Kathleen Thorsen (Enrollment Services), Gabrielle Torphy (CELS Academic Unit 3), Linda Vetovis (Dean Environment & Life Science), Brian Walsh (Business Instruction), Thomas Wasilewski (Women's Basketball), Jacqueline Webb (CELS Academic Unit 3)

continued on page 11



In Recognition of 40 Years of Service

Since 2013, the University of Rhode Island has been honoring individuals who have dedicated their work lives to serving URI. Each year, during a formal induction ceremony, the University congratulates and thanks its retiring staff and faculty members who have been employed at the University for 40 years or more. Each new member is recognized and commemorative bricks, engraved with the retiree's name and years of service, are unveiled, and then placed in the patio of the Robert L. Carothers Library and Learning Commons.

Friday, December 6, 2024

Robert J. Higgins Welcome Center
Kingston Campus

2024 Inductees (retired as of December 2023)

Richard Anderson, Maintenance Superintendent, Facilities Services, 45

William Euler, Professor, Chemistry, 41

Heather Faubert, Research Associate II, CELS, 42

Paul Florin, Professor, Psychology, 42

Arthur Gold, Professor, CELS Academic Unit 2, 40

Joanne Lawrence, Specialist, Faculty Senate, Faculty Senate, 42

Craig Louzon, Grounds Superintendent, Landscape & Grounds Maintenance, 40

Jane Miner, Mgr, NBC/GSO Business, GSO Business Office GSO, 47

David Nelson, Professor, CELS, 42

Peter Nightingale, Professor, Physics, 40

Stuart Westin, Professor, Business Instruction, 40

In Memoriam

- ❖ Thomas Kalista, Clinical Assistant Professor, Pharmacy
- ❖ Thomas Rockett, Vice Provost for Research, Chair, Chemical Engineering
- ❖ Kathleen Webster, Associate Teaching Professor, Psychology



VP Human Resources...continued from page 4

"Nothing is more central to URI's success than our people," President Parlange said. "I look forward to working with Becky in this important role and to advancing our shared priority of cultivating a culture of valuing people, excellence, and giving back."

URInformed Word Search Winner

Congratulations to **Kelly McGrane, Custodial Services!**

Please contact Nancy Gillespie, Communications and Marketing (4-4508) to claim your prize.

Check out the Word Search on page 5!

URInformed is now on the Web
at

<http://web.uri.edu/urinformed/>

Browse the current issue of
URInformed

The Pets Corner

Pets Corner Invitation

Send us your favorite photo of you and your pet.

We need a high resolution jpg.

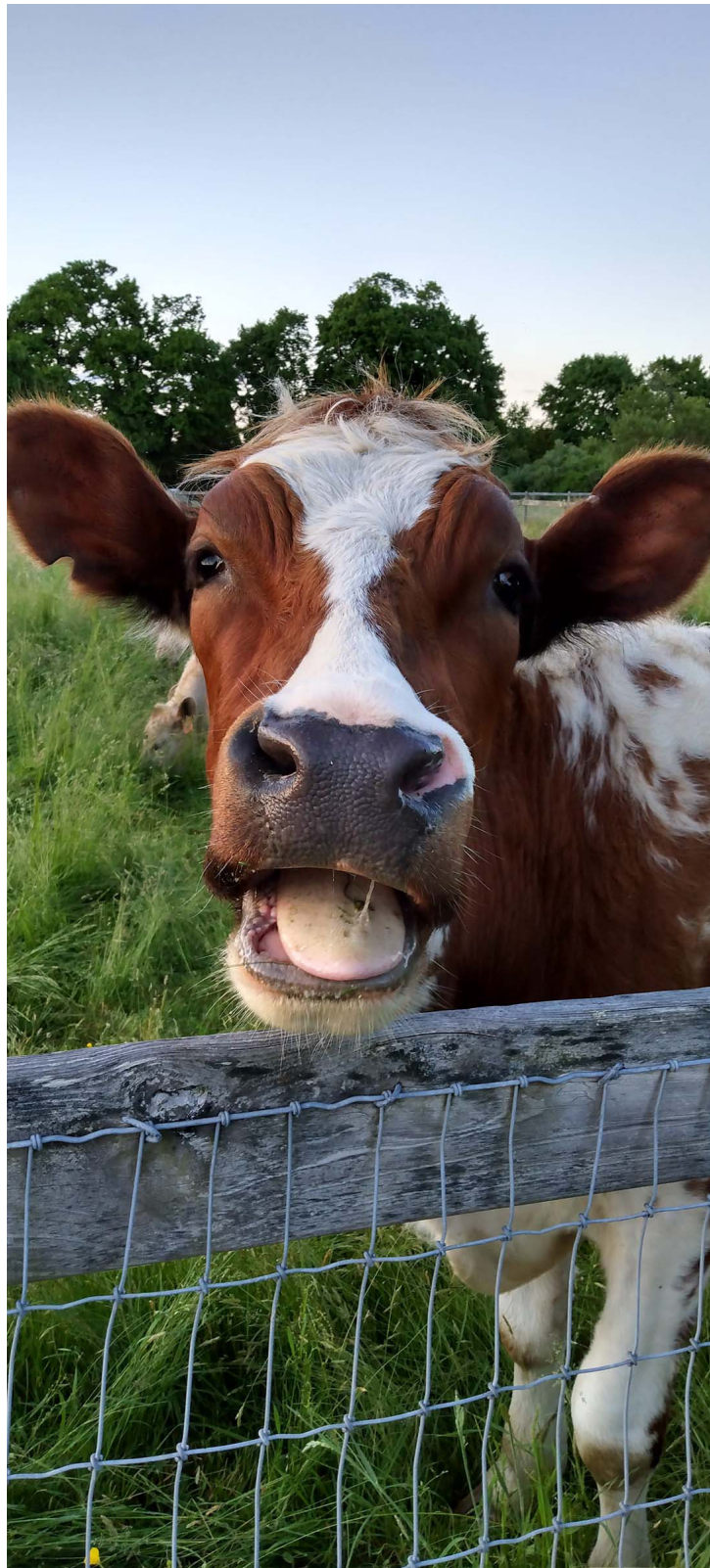
Your name and department

Your pet's name, breed

One or two sentences about your pet. Maybe the photo will tell us all we need to know.

Contact:

Nancy Gillespie
ngillespie@uri.edu



Smiling Cow at URI's Peckham Farm

-- Submitted by **Ronald Drake Jr.**, Senior Maintenance Technician, Facilities Operations

Move-In...continued from page 7

Campus Avenue. She was part of a trio – with fellow Orientation volunteers Yemi Adenegan, a junior human development and family science major from Providence, and Omar Dovesi, a junior computer science major from Italy – that sang and shouted messages of welcome.

Over at Hillside, Arabella Mechanick and Natalye Lustberg were among the hundreds of Greek Life students who helped first-year students move in.

“Obviously it’s a really stressful day for first-year students,” said Mechanick, a sophomore psychology and human development major from Randolph, New Jersey. “So, we wanted to provide some friendly faces. ... I didn’t know anyone at all when I came here and move-in gave me a group of people I could recognize around campus.”

“I remember my dorm didn’t have an elevator,” added Lustberg, a sophomore sports media major from Weston, Connecticut. “I would have had to carry all my stuff up the stairs myself. But I had helpers that moved all my stuff up for me. ... so I could get started unpacking.”

Nathan Hazard of Scituate, an incoming criminal justice and Spanish major, was thankful for all the help as he moved into Peck Hall.

While Hazard liked what he saw during his tour of the URI campus, he was attracted by URI’s ROTC program. “I know the academics at URI are very strong and I know I’ll learn a lot,” said Hazard, a member of the Army National Guard. “But I have a lot of opportunities with the ROTC program and other clubs I can join. So URI was my top choice. I knew I wanted to come here.”

Sam Marchese, a first-year marine biology and animal science major from Westerly, has had numerous chances to experience the Kingston Campus and envision himself as a URI student – he’s the son of URI Dean of Engineering Anthony Marchese. This past summer, he worked in mechanical engineering professor Arun Shukla’s lab at URI, just like any research student.

“I feel that of all the colleges that I looked at, URI is the one that I could see myself going to the most,” he said as he moved into Hillside. “Being around campus a lot ... I could picture myself here.”

“It’s an honor and a privilege that Sam chose URI,” said his dad, who was at Hillside to welcome incoming engineering students. “He’s a great student and had a lot of options. But URI is where he feels comfortable and we’re really excited to have him. That’s speaking as dean of engineering. But as a father, it’s bittersweet. My wife and I are empty-nesters now. And, like all parents, we worry about our kids finding their community. At the same time, we know our kids have to figure that out on their own.”

Sydney Melluzzo, a first-generation college student from Wethersfield, Connecticut, knew URI was the place for her after visiting Peckham Farm. “I toured URI during Welcome Day and Orientation,” said Melluzzo. “It’s a pretty campus. I really liked the farm. I’m going into animal science and I want to be a veterinarian. Ever since I was a kid, I always wanted to do something with animals.”

For first-year student Kennedy Klein, it took three visits to URI to seal the deal.

“This is where I wanted to be,” said Klein, who plans to major in history and psychology and minor in French. “I wanted to be somewhere in the Northeast. So we started looking at different schools all over, Connecticut, Massachusetts, Rhode Island. And I landed on URI. It had no ‘cons.’”

Klein, whose family recently moved from Portland, Oregon, to Manhattan, found move-in “super easy” – with all the help from volunteers. The possessions delivered to her door at Peck included one with a special value – a suitcase once owned by her great-grandmother that held graduation letters and gifts from friends. “It’s old and I love it,” she said.

Decorating her room in Weldin Hall, Lucy Cameron explained the things that swayed her toward URI – the coast, Narragansett Beach, and the marine affairs program. “I decided on my major while touring schools,” she said. “I like learning about the water and animals.”

This will be the longest she’s been away from home, she said, so packed among her things was a reminder: a white oblong pillow embroidered with “Newburyport, MA,” her hometown. It was a graduation gift from a classmate to a dozen friends as they start new academic journeys.

Fall Facts...continued from page 6

ational forum brings experts to the University annually to examine issues of national and local relevance; the series opened Sept. 17. The colloquium is free, open to the public, and also available online.

URI's **Center for the Humanities** will also host a yearlong lecture series on “**Sustaining Democracy**”.

The **URI Theatre** season will begin in October with *Machinal* by Sophie Treadwell leading the 2024–25 season, directed by Rachel Walshe. See <http://www.uri.edu/theatre> for details.

This year's **Innovation and Entrepreneurship Challenge** is focused on democracy, to correspond with the Fall 2024 Honors Colloquium. **Students from all majors** are invited to generate creative ideas to address social, political, environmental, and economic problems through democratic innovation and entrepreneurship.

The **Forensic Science Seminar Series**, which celebrated 25 years last year, starts in September. Public lectures take place in the Beupre Center on Friday afternoons and are viewable online.

URI's annual **Be 5K Walk/Run** for Mental Health Awareness will be held Oct. 19 on the Quad. Proceeds support mental health programs for students.

Other notable happenings and events

The University is celebrating a **25-year milestone** for the International Engineering Program House, which opened on Upper College Road to house students in the program in 1999. The IEP has since expanded to include programs in six different languages.

Celebración Hispana! in the URI Welcome Center and Green Hall. The exhibit will be on display through December, presenting work in a variety of media by artists from the Caribbean, Central and South America.

URI is a top Military Friendly University and maritime center of excellence in education and research. This year's **Sea Services Symposium** took place on Sept. 27 on the Quad, to expose URI students to the opportunities and career paths in maritime government service and maritime industries supporting government missions and the Blue Economy.

Homecoming Weekend will take place Oct. 25–27, with the Rhodyville block party starting at 10 a.m., before the football game on Oct. 26 against Maine. **Family Weekend** takes place Nov. 1–3, with Sal Vulcano and Joe Gatto and more.

URI Transportation and Parking has a new vehicle for its **Rhody Safe Rides** which provides community members with a safe and accessible alternative after hours. Last year, URI Transportation and Parking introduced a new vehicle that provides better access for students and employees with disabilities. Students, faculty and staff can schedule rides using the Trans-Loc App Monday through Friday 5:30 p.m. to 1 a.m., and Saturday and Sunday 6 p.m. to 1 a.m., on the Kingston Campus, Emporium and to and from the Kingston Amtrak train station.

For more information on any of the items listed here, please visit the University of Rhode Island website at <http://www.uri.edu> and download the Rhody Connect app for regular community updates.



Cook's Corner

Share your favorite recipes in the Cook's Corner

Game Day Chili

The bit of bittersweet chocolate in this chili is optional, but try it, it keeps the heat of the chili seasoning in check and adds richness.

Prep Time: 40 mins

Slow Cook Time: 60 mins

Servings: 8

Ingredients:

- 1 recipe Chili Seasoning Puree*
 - 1 ½ pound ground beef chuck
 - 1 large onion, chopped
 - 1 stalk celery, sliced
 - 1 28 ounce can diced tomatoes, undrained
 - 1 14 ounce can beef broth
 - 1 ½ cup pitted dried plums, chopped
 - 1 ½ cup water
 - 1 6 ounce can tomato paste
 - 2 tablespoons smoked paprika
 - 2 teaspoon ground coriander
 - 1 teaspoon crushed red pepper
 - ¼ teaspoon ground cloves
 - 1 ounce bittersweet chocolate, chopped
- *For the Chili Seasoning Puree*
- 2 dried ancho, mulato, or pasilla chile peppers
 - ¾ cup beef broth
 - 5 pitted dried plums (prunes)
 - 1 fresh jalapeno chile pepper, seeded and chopped



Directions:

- 1). Prepare Chili Seasoning Puree; set aside. In a 6-quart Dutch oven cook ground beef, onion, and celery over medium-high heat until meat is browned and onion is tender, using a wooden spoon to break up meat as it cooks. Drain off fat.
- 2). Transfer meat mixture to a 5- or 6-quart slow cooker. Stir in Chili Seasoning Puree, tomatoes, broth, plums, the water, tomato paste, paprika, coriander, crushed red pepper, and cloves.
- 3). Cook, covered, on low-heat setting for 6 to 7 hours (or on high-heat setting for 3 to 3-1/2

hours). Stir in chocolate if serving immediately.

Chili Seasoning Puree

In a small bowl combine ancho, mulato, or pasilla chile peppers and enough boiling water to cover. Let stand for 30 minutes; drain well. Wearing plastic gloves, remove stems and seeds from peppers. In a food processor or blender combine drained chile peppers; beef broth; dried plums (prunes), and jalapeno chile pepper. Cover, process or blend until smooth. If making ahead, cool chili slightly. Transfer to refrigerator storage containers, cover, and refrigerate up to 8 hours. Two hours before serving, transfer chili to a slow cooker. Reheat, covered, on high-heat setting for 1 to 2 hours or until heated through, stirring occasionally. Stir in chocolate just before serving.

For easy cleanup

Line your slow cooker with a disposable slow cooker liner. Add ingredients as directed in recipe. Once your chili is finished cooking, spoon the chili out of your slow cooker and dispose of the liner. Do not lift or transport the disposable liner with food inside.

Nutrition Facts

Calories 343, Total Fat 14g, Saturated Fat 5g, Cholesterol 58mg, Sodium 702mg, Total Carbohydrate 38g, Total Sugars 21g Protein 20g, Vitamin C 15mg, Calcium 71mg, Iron 4mg, Potassium 1093mg,

--Recipe By BHG Test Kitchen



URInformed

The URI Employees' Newsletter
73 Upper College Road, Kingston Campus



 **Higher Education Bond**

In the Nov. 5 general election, Question 2 will ask voters to approve a \$160.5 million higher education bond—\$87.5 million to be used for the construction of a new biomedical sciences building at URI's Kingston Campus, and \$73 million to modernize and transform Whipple Hall at RIC into a dedicated home for the Institute for Cybersecurity & Emerging Technologies.