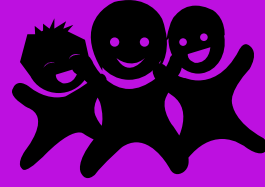
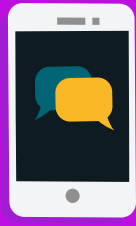


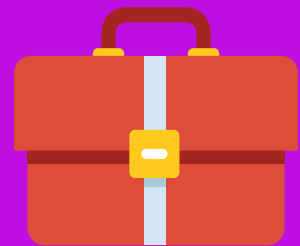
# Communicative Disorders



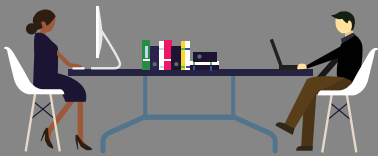
Pursuing a Master's Degree in Speech Pathology is highly encouraged but not the only path that students can pursue. In addition to a career as a speech pathologist or audiologist, students are able to work at child development centers, work with individuals with autism, pre-schools, or various positions in healthcare administration.

Hospitals  
Schools/Universities  
Behavioral Therapy for children with autism  
Early Intervention  
Gerontology  
Occupational therapy  
Public health  
Rehabilitation counseling  
Social work  
Special Education  
Teacher of the Deaf  
Teaching of English as a Second Language

## COMMON EMPLOYERS & OCCUPATIONS



## PROFESSIONAL ORGANIZATIONS



American Academy of Audiology  
American Academy of Private Practice in Speech Pathology and Audiology  
American Auditory Society  
American Speech Language Hearing Association  
American Speech Language Hearing Foundation  
Audiological Resource Association  
National Center for Voice and Speech  
State Speech and Hearing Association

## STRATEGIES ON ENTERING THE FIELD

- Shadow various professionals in the field to see what the everyday work entails
- Volunteer in healthcare settings or other helping roles
- Earn excellent grades for when applying to graduate school
- Develop communication and computer skills
- Gain experience with medical technology and database systems through internships