



# Multicultural Consultation Team Newsletter

## Spring 2021 Issue

### **Who are we?**

The **Multicultural Consultation (MCC) Team** is composed of faculty and graduate students in the Department of Psychology at the University of Rhode Island.

### **What is our mission?**

To cultivate an **inclusive** community and support students, faculty, and staff as they build knowledge and implement multiculturalism into their work.

To assist in facilitating the conduct of **culturally-informed, inclusive, and equitable** research, teaching, service, and clinical practice.

### **What services do we provide?**

**Teaching** (e.g., review of syllabi, input on best classroom practices)

**Research** (e.g., recruitment strategies, selection of psychological or cognitive tests and questionnaires)

**Practice** (e.g., culturally competent best practices, suggestions for culturally competent training opportunities, working with interpreters in mental health settings)

**Supervision** (e.g., culturally competent supervision, cultural differences in supervisory relationships)

**Mentorship** (e.g., power differentials, recruitment and retention of diverse students)

***Not sure what other services we provide?  
Just ask!***

Please email [psychmcc@etal.uri.edu](mailto:psychmcc@etal.uri.edu) to schedule an appointment.

### **Upcoming Events**

#### **Inclusion and Diversity Committee (IDC)**

The Inclusion and Diversity Committee (IDC) is a collaboration of faculty, staff, and graduate students who are committed to cultivating a department environment that promotes inclusive excellence. Members engage in critical conversations and select thoughtful actions during monthly meetings. All are welcome to join our meetings!

Next meeting: **Monday, April 19<sup>th</sup> 1-2pm**

#### **IDC Brown Bag Series**

Dr. Riana Anderson presenting on interventions for reducing racial stress and trauma and improving psychological well-being and family functioning.

Next talk: **Thursday, April 22<sup>nd</sup> 3-4pm**

#### **Students of Color Meeting**

The Students of Color meeting serves as a platform and safe space for students of color to discuss experiences and issues that might be affecting them in and outside of the program. Meetings are held monthly. For more information about the Students of Color Meeting,

email [esther\\_quiroz@uri.edu](mailto:esther_quiroz@uri.edu)

Next meeting: **Thursday, April 8<sup>th</sup> 4:30-5:30pm**

#### **RIPA Workshop**

Dr. Chairman F. Jackman will discuss the clinician's role in addressing biases that come into therapy and will share strategies for engaging in difficult conversations.

Next workshop: **Friday, April 23<sup>rd</sup> 9:00am-12:15pm**

## Good Reads

*Everything I Never Told You*, Celeste Ng (2015, Penguin Books): A beautiful novel about a Chinese American family living in 1970s small-town Ohio.

*Thick and Other Essays*, Tressie McMillan Cottom (2019, The New Press): A collection of 8 essays on everything from politics to pop culture told through the lens of black feminism.

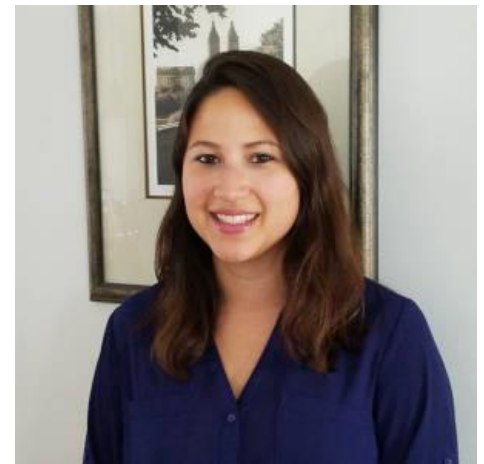
*The Sum of Us: What Racism Costs All of Us and How We Can Prosper Together*, Heather McGhee (2021, One World): Exploring the costs of racism for everyone—not just for people of color.

## Student Spotlight

Congratulations to **Shannon Forkus** and **Tessa Nalven** on receiving NIH F31 Ruth L. Kirschstein National Research Service Award (NRSA) Individual Predoctoral Fellowships!



**Shannon Forkus** is a 3rd year Clinical Psychology PhD student working with Dr. Nicole Wiess. Her program of research is devoted to further clarifying the relation between trauma, PTSD, and substance use through the use of innovative methodology and data analytic strategies. She was recently awarded a Ruth L. Kirschstein Predoctoral Individual National Research Service Award from the National Institute on Drug Abuse (NIDA). The project will use machine learning methods to predict substance use outcomes among individuals with a history of military sexual trauma. This predoctoral fellowship award will provide two years of funding, inclusive of stipend, tuition/fee coverage, and an institutional allowance.



**Tessa Nalven** is a 4<sup>th</sup> year Clinical Psychology PhD student working with Dr. Nichea Spillane. Her program of research focuses on health disparities related to substance use among marginalized racial/ethnic groups. She was recently awarded a Ruth L. Kirschstein Predoctoral Individual National Research Service Award (F31) from the National Institute on Drug Abuse (NIDA). The project will consist of a qualitative exploration of risk and protective factors related to alcohol and other drug use among multiracial young adults and subsequent quantitative analyses to test if constructs identified during focus groups are significantly related to alcohol or other drug use in a sample of multiracial young adults.

## Methodology Corner: Structural Invariance Modeling

A common topic in multicultural research involves comparing 2+ groups on their responses to a measure. This assumes that the measure is equally reliable and valid for the groups. Structural invariance modeling is a technique that can be used to show that measures have the same measurement properties across multiple groups. Measurement equivalence is important for establishing that group means and outcomes can be properly compared across diverse groups. Once invariance is established, we can assume little or no measurement bias exists when comparing across groups. Common group comparisons include race/ethnicity, gender, and age, but can also include manipulated variables, such as treatment condition. Invariance modeling is usually conducted using structural equation modeling software such as R or EQS. *The Quantitative Consulting Group is available for help on conducting analyses and using software.*