



**RHODE ISLAND IDeA NETWORK OF
BIOMEDICAL RESEARCH EXCELLENCE**



The Rhode Island IDeA Network of Biomedical Research Excellence (RI-INBRE) at the University of Rhode Island aims to expand statewide research capacity in the biomedical sciences, facilitating studies of cancer, environmental health sciences, and neuroscience by supporting early-career faculty development, providing experimental learning opportunities to students, and funding the acquisition and maintenance of high-tech equipment for researchers.

RI-INBRE—TRANSFORMING RHODE ISLAND'S RESEARCH COMMUNITY AND ADVANCING THE STUDY OF:

- Cancer
- Environmental Health Sciences
- Neuroscience





A PARTNERSHIP

Established by the National Institutes of Health (NIH) in 2001, RI-INBRE is based at the University of Rhode Island's College of Pharmacy, in partnership with several other local institutions including Brown University, Bryant University, the Community College of Rhode Island, Providence College, Rhode Island College, Roger Williams University, and Salve Regina University.

THE
UNIVERSITY
OF RHODE ISLAND



BROWN



Bryant University



COMMUNITY COLLEGE
OF RHODE ISLAND

Roger Williams
University



PROVIDENCE
COLLEGE

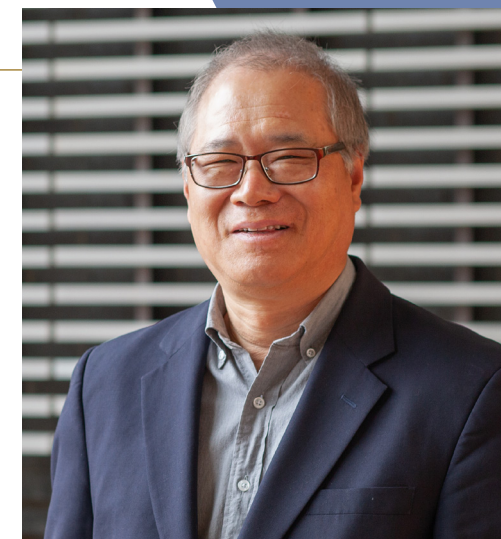


RHODE
ISLAND
COLLEGE



OUR GOALS:

- Facilitate and increase the number of junior investigators and prepare them to compete for independent extramural funding from the NIH and other funding agencies.
- Increase the number of students being trained for careers in the biomedical sciences.
- Provide access to instrumentation and bioinformatics to conduct cutting-edge research.



Bongsup Cho

“RI-INBRE’s network of collaborative researchers and student training programs has positioned Rhode Island to become a major player in the nation’s biomedical research. We want to make sure that junior faculty around the state have the basic biomedical research infrastructure available so they can train the next generation of biomedical scientists and create a pipeline to fill the needs of the state’s biomedical sector.”

—Bongsup Cho,
Program Director, RI-INBRE, and,
Professor of Pharmacy,
University of Rhode Island

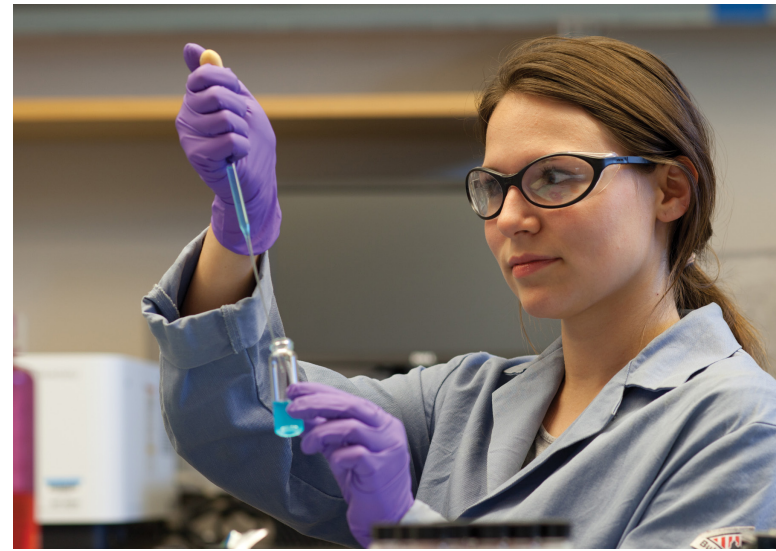




ENHANCING THE BIOMEDICAL RESEARCH WORKFORCE

RI-INBRE is helping Rhode Island scientists become more competitive in their quest for federal research grants. With the 2019–2024 grant renewal, RI-INBRE will have provided Rhode Island with **\$81 million in research and training funding**.

Establishing a strong network of colleges and universities to support our research community is a fundamental step in improving the state’s economy. RI-INBRE plays an important role in making this happen by training a steady pool of talented young scientists. Rhode Island’s biomedical research capacity is gaining momentum, aided by the outstanding research and training facilities available at the RI-INBRE institutions.



MAKING STRIDES:

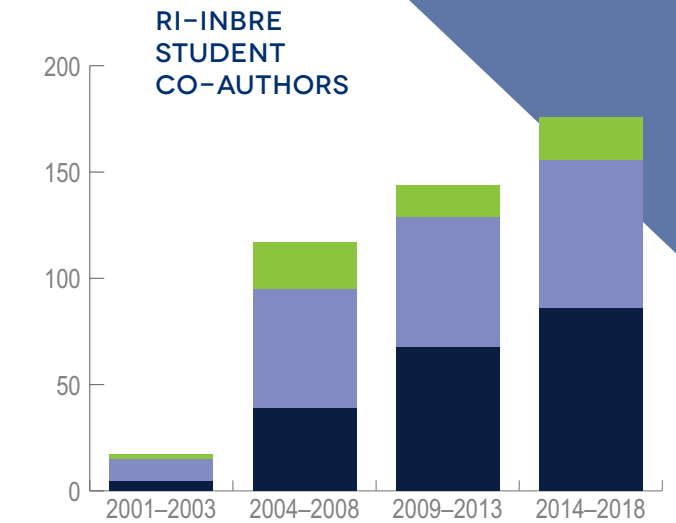
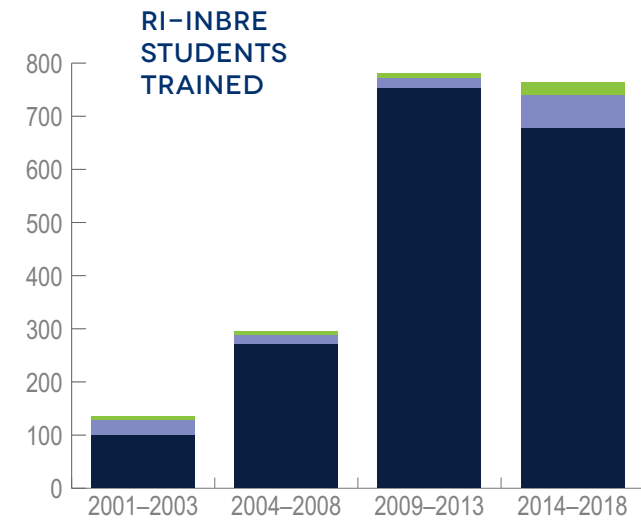
RI-INBRE projects have yielded **757** publications with **176** undergraduate authors

212 RI-INBRE funded scientists received **grants** for **533** projects

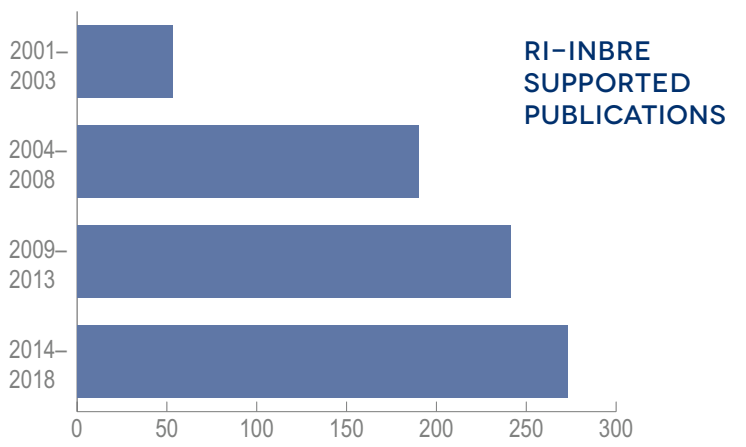
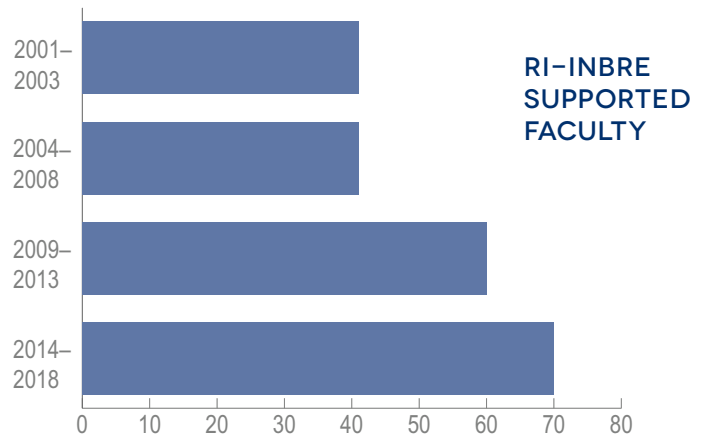
1,975 students have been **trained**

“The RI-INBRE program has been truly transformative for Rhode Island’s research community. We’ve contributed to expanding the opportunities for faculty research and trained hundreds of students who are now earning advanced degrees or are out in the workforce.”

—David M. Dooley, President, University of Rhode Island



■ Postdoctoral Researcher ■ Graduate Student ■ Undergraduate



TRAINING THE NEXT GENERATION OF BIOMEDICAL SCIENTISTS

Since 2001, nearly 2,000 students received hands-on biomedical research training through the RI-INBRE program, continually providing a pipeline of biomedically trained personnel. More than **70 percent of undergraduates trained** through RI-INBRE hold biomedical jobs in New England.

“We’ve built a real community of researchers. People at the various colleges who didn’t know each other before are now collaborating on their research. We’ve inspired a culture change among researchers, especially at the primarily undergraduate institutions, and we’re not finished yet.”

—Bongsup Cho, Program Director, RI-INBRE, and, Professor of Pharmacy, University of Rhode Island



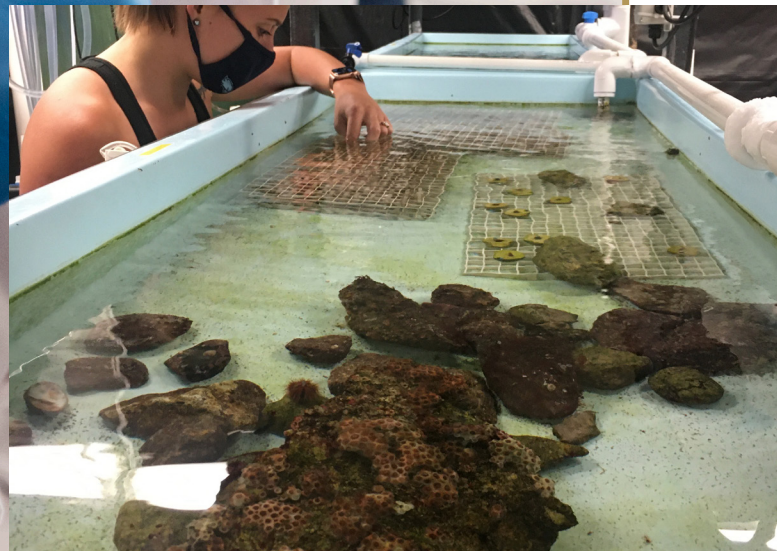


INNOVATING THE RHODE ISLAND ECONOMY

RI-INBRE's combined network institutions have allowed research and educational institutions in Rhode Island to successfully compete for hundreds of federal research grants, bringing tens of millions of dollars into the state.

"RI-INBRE has advanced the sciences at Rhode Island College in ways that extend far beyond a simple infusion of federal financial support. It has dramatically improved our research infrastructure in biology, physical sciences, and psychology by providing faculty with critical resources and renovated laboratory space to engage in cutting-edge biomedical research."

—Frank D. Sanchez, President, Rhode Island College



FROM THE START, WE'VE:

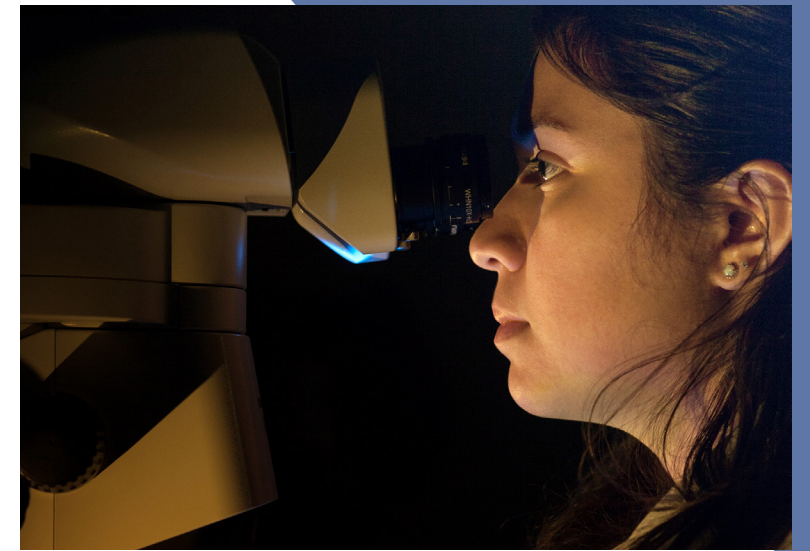
- Trained the biomedical workforce in Rhode Island's research, educational and industrial/biotechnology sectors.
- Provided an important catalyst for spurring research and innovation throughout the state.

"The RI-INBRE program is a vital resource to train the next generation of biomedical researchers. The program supports work that ranges from discovering novel treatments for very serious human diseases, to exploring the impacts of environmental degradation on human health."

—Peter J. Snyder, Vice President of Research, University of Rhode Island

"Renewing the grant is great news for the state. This federal funding will help lead to research breakthroughs and train tomorrow's biomedical workforce here in Rhode Island."

—Jack Reed, U.S. Senator



THE UNIVERSITY OF RHODE ISLAND

The Rhode Island IDeA Network of Biomedical Research Excellence is a statewide consortium headquartered at the University of Rhode Island's College of Pharmacy.

uri.edu/riinbre



University of Rhode Island
Avedisian Hall 495E
7 Greenhouse Road
Kingston, RI 02881

401.874.9288
RIINBRE@etal.uri.edu