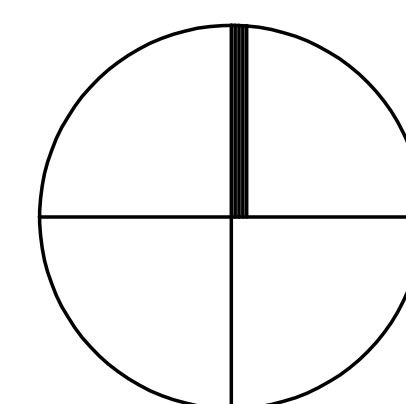
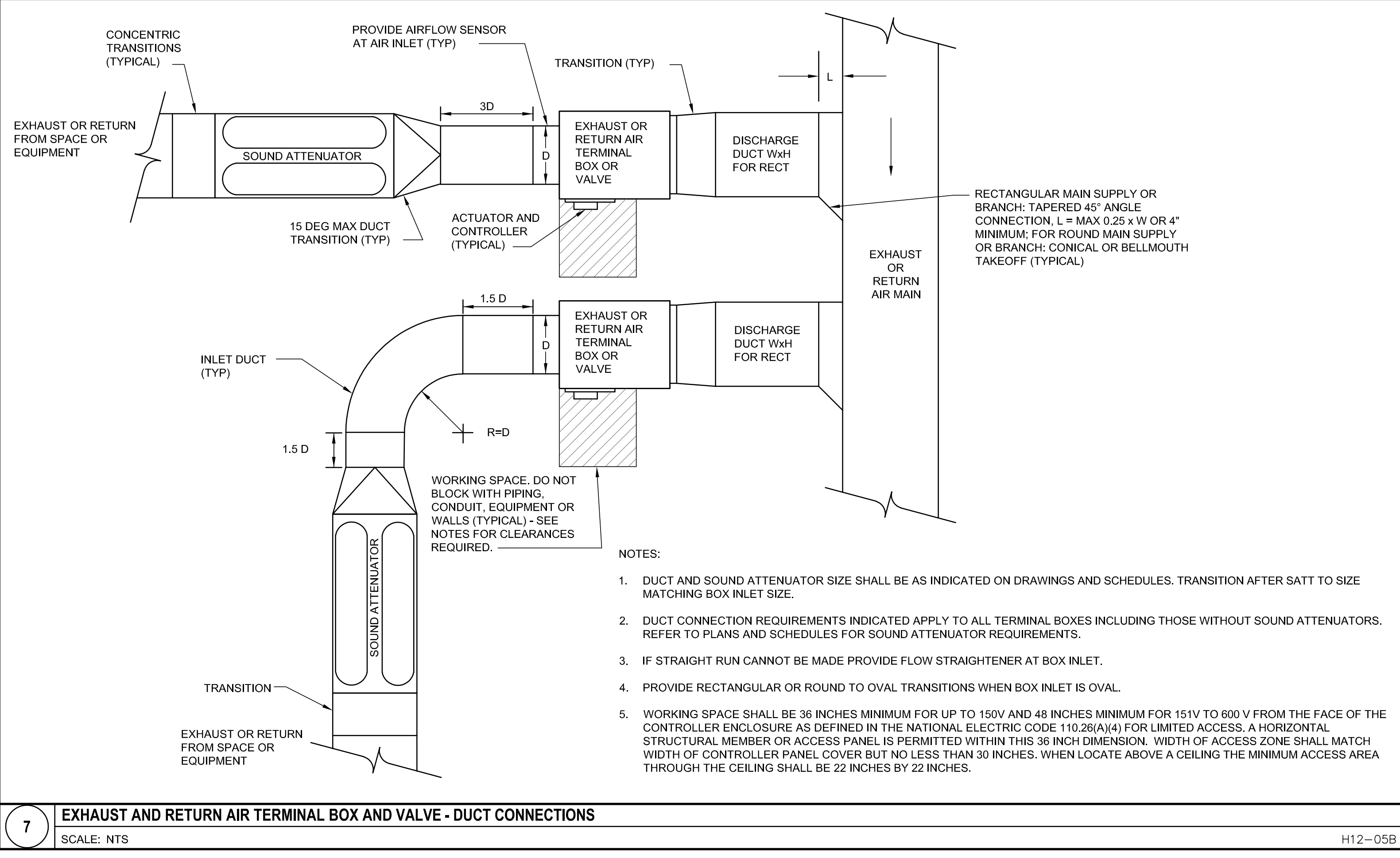
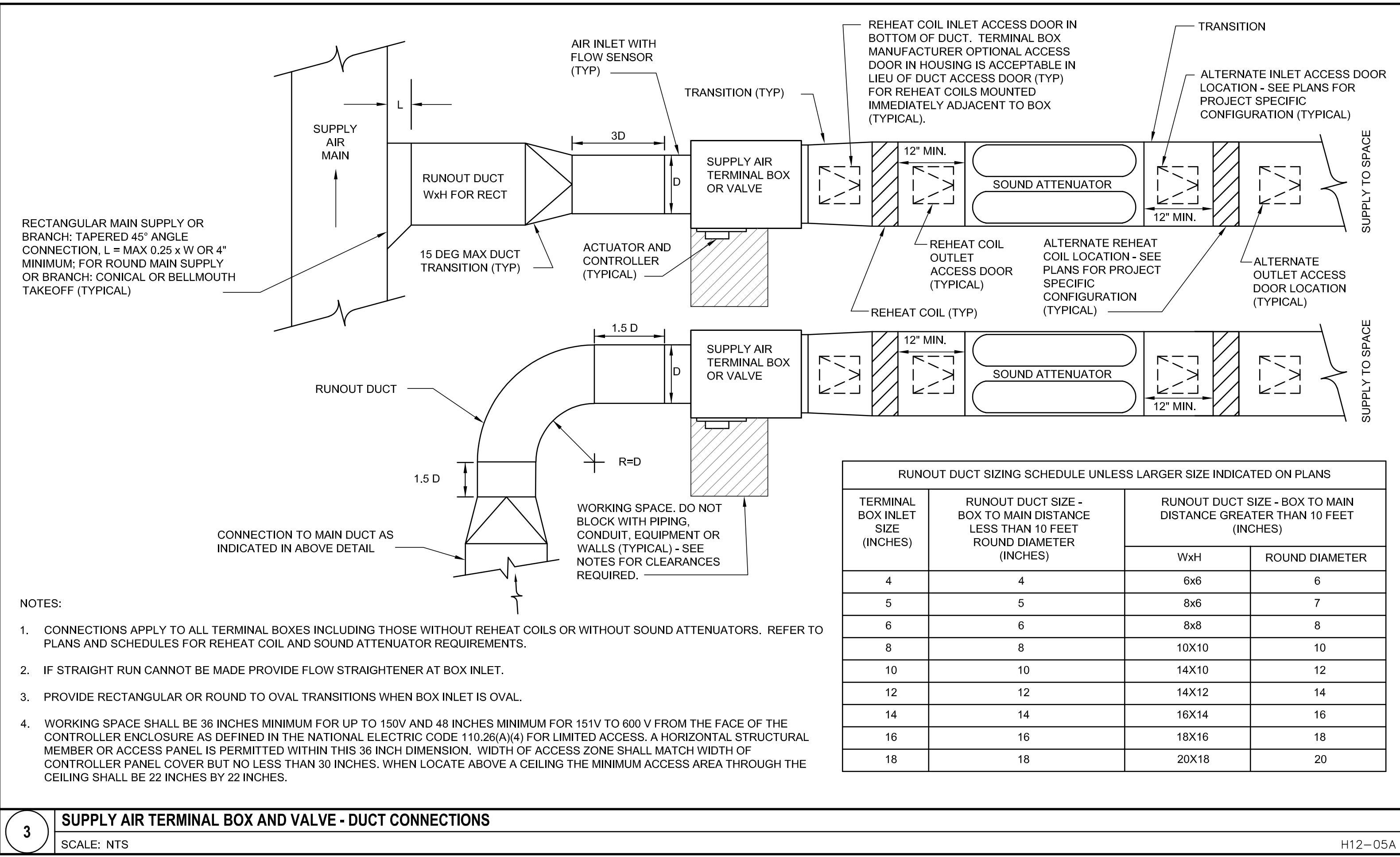
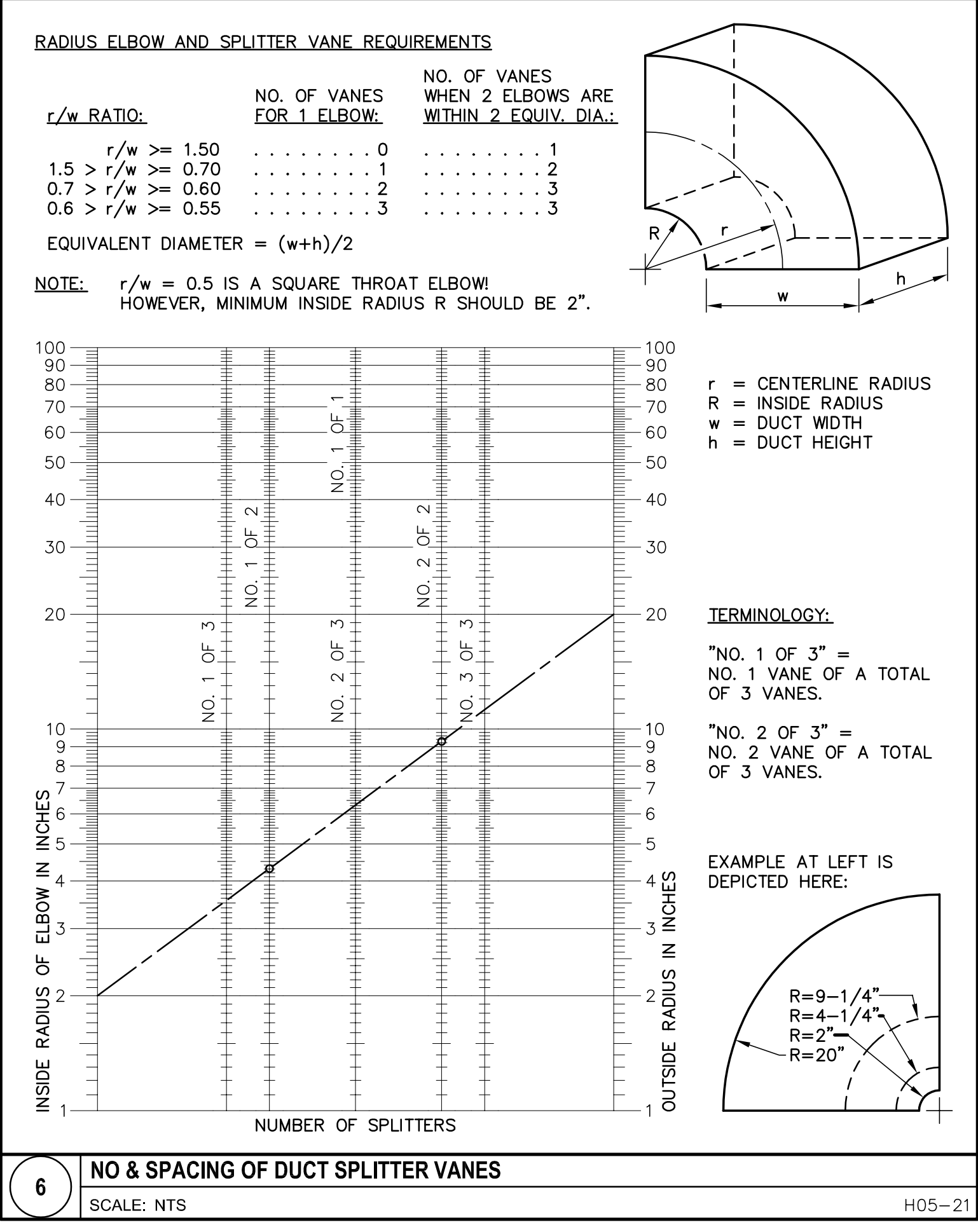
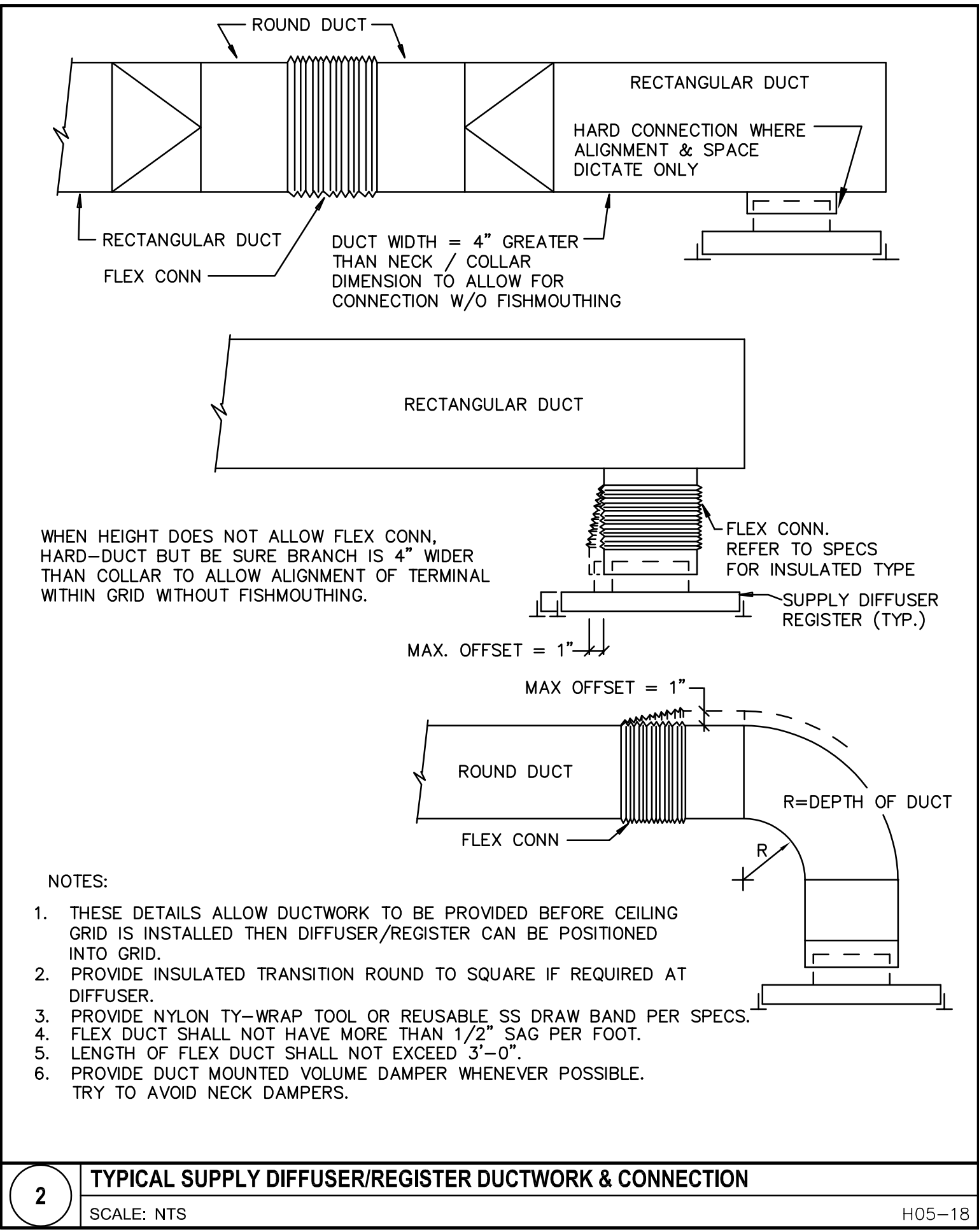
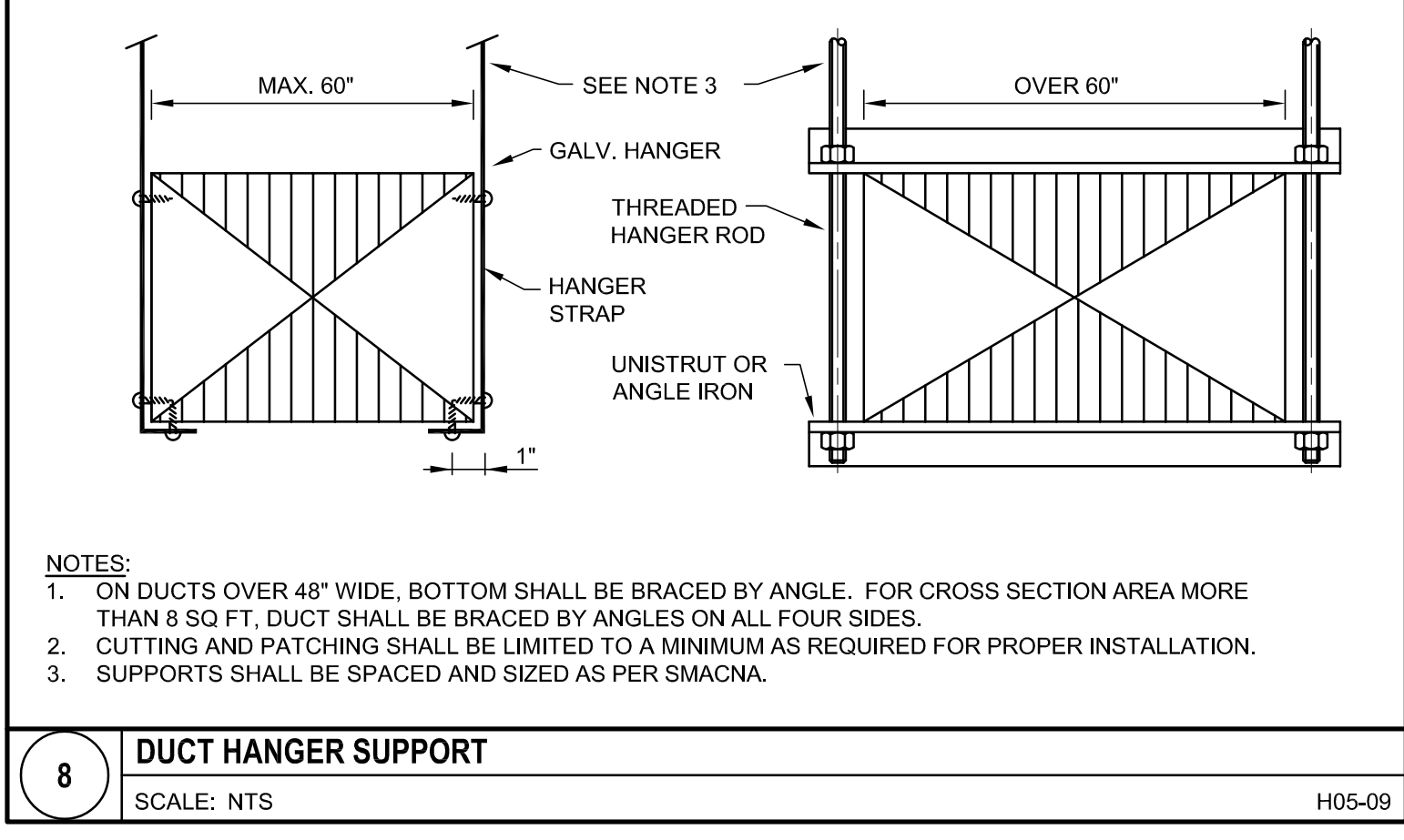
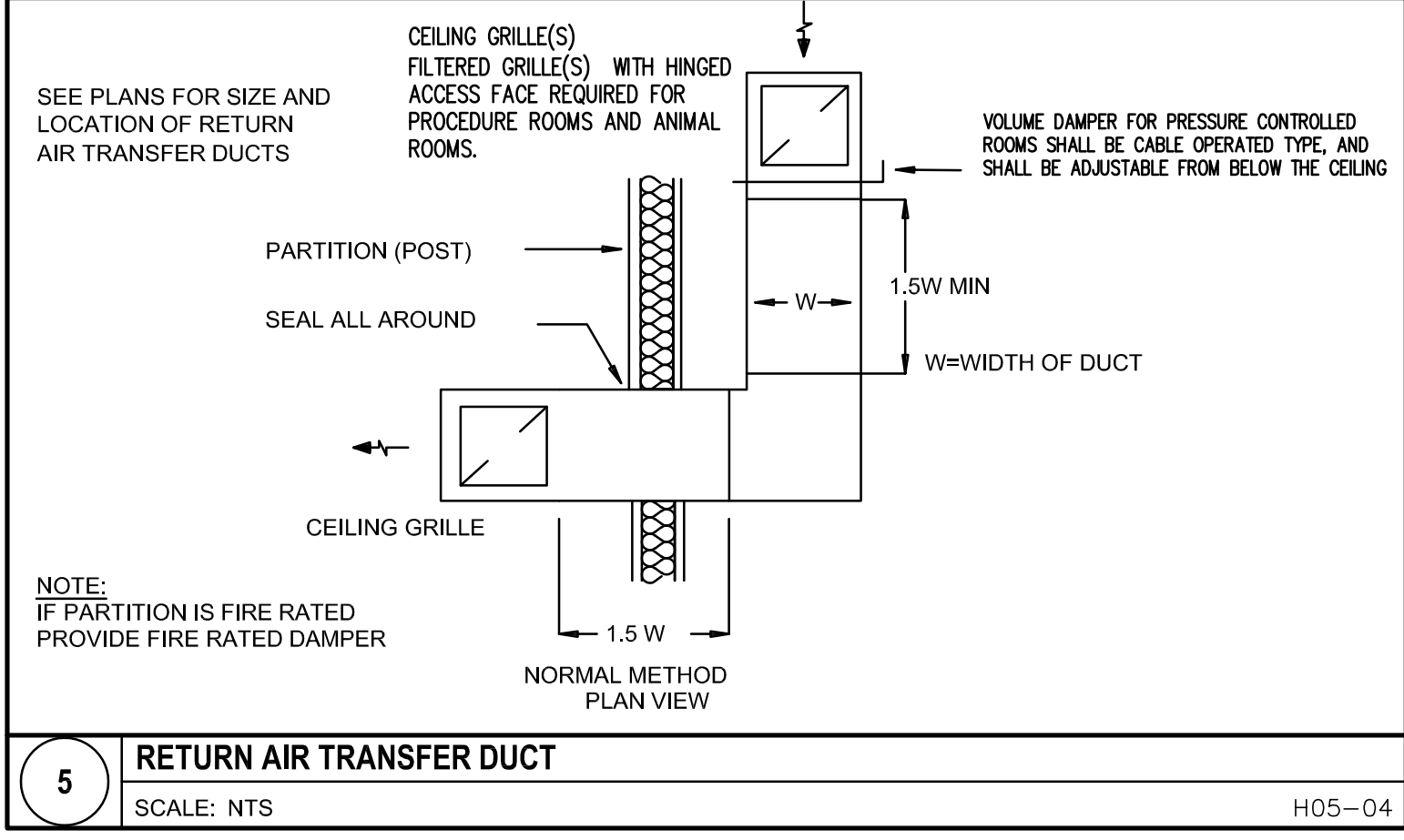
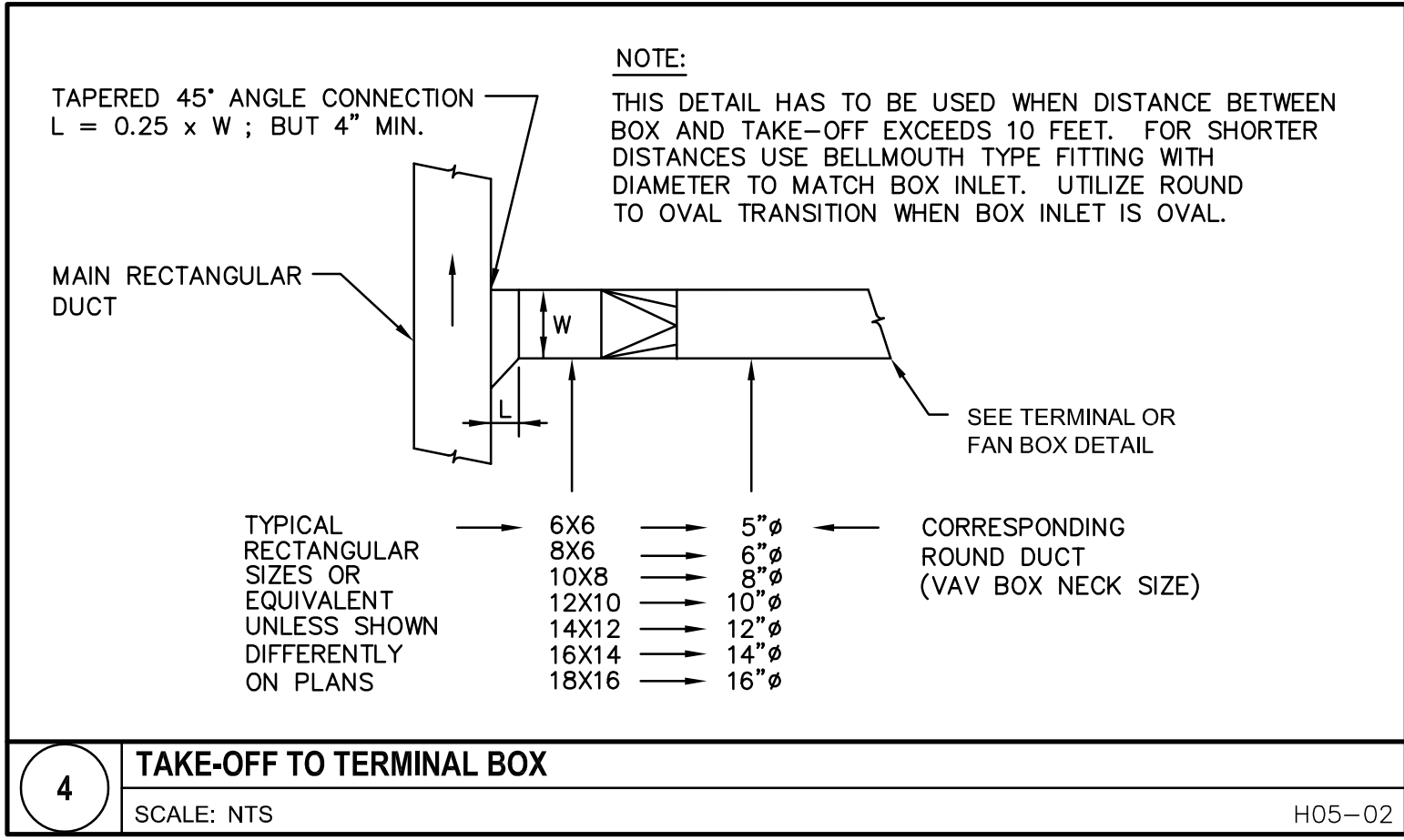
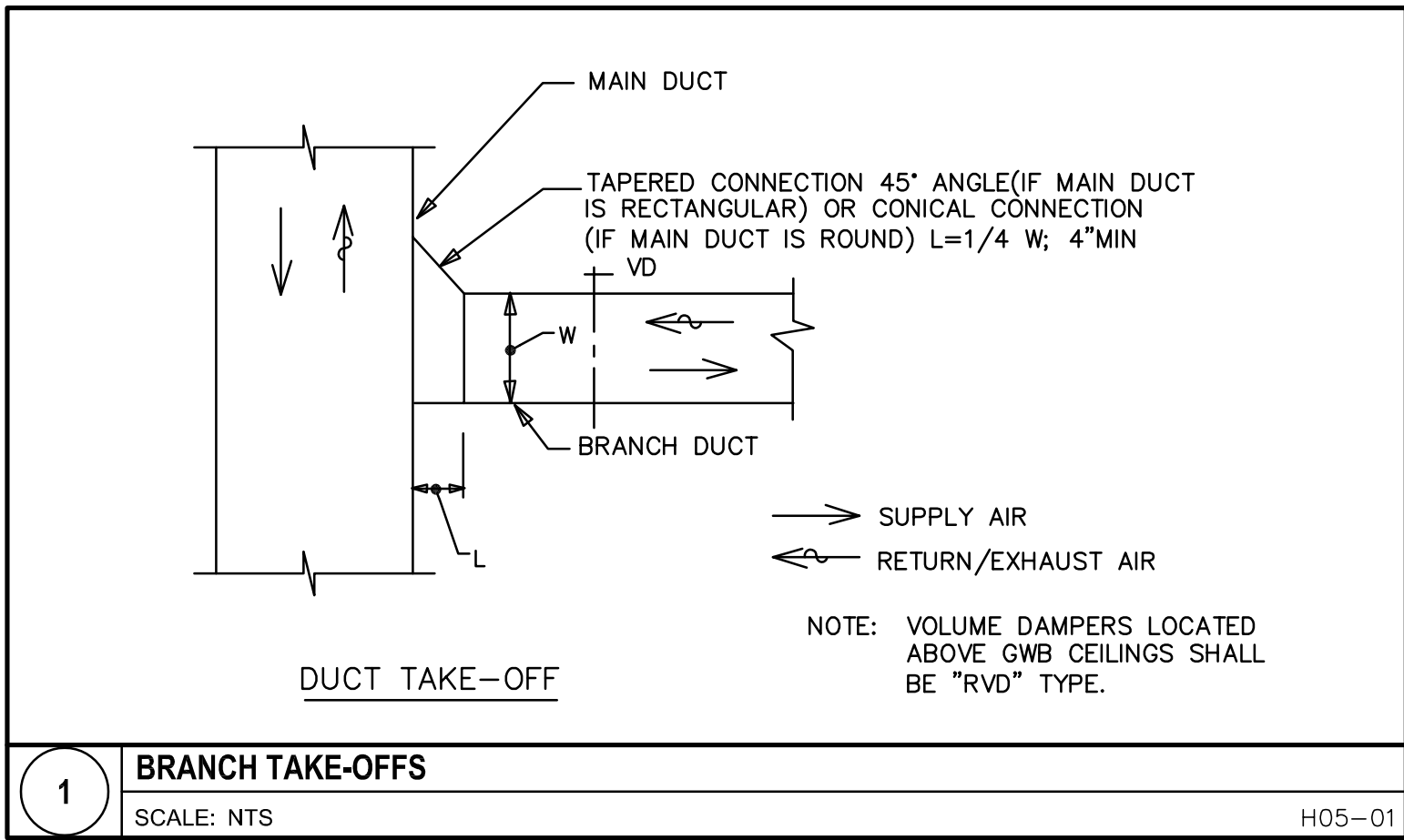




0 1 2 3 4 5 6 7 8 9 10 11 12 13 14 15 16 17 18 19 20 21 22 23 24 25 26 27 28 29 30 31 32 33 34 35 36 37 38 39 40 41 42 43 44 45 46 47 48 49 50 51 52 53 54 55 56 57 58 59 60 61 62 63 64 65 66 67 68 69 70 71 72 73 74 75 76 77 78 79 80 81 82 83 84 85 86 87 88 89 90 91 92 93 94 95 96 97 98 99 100

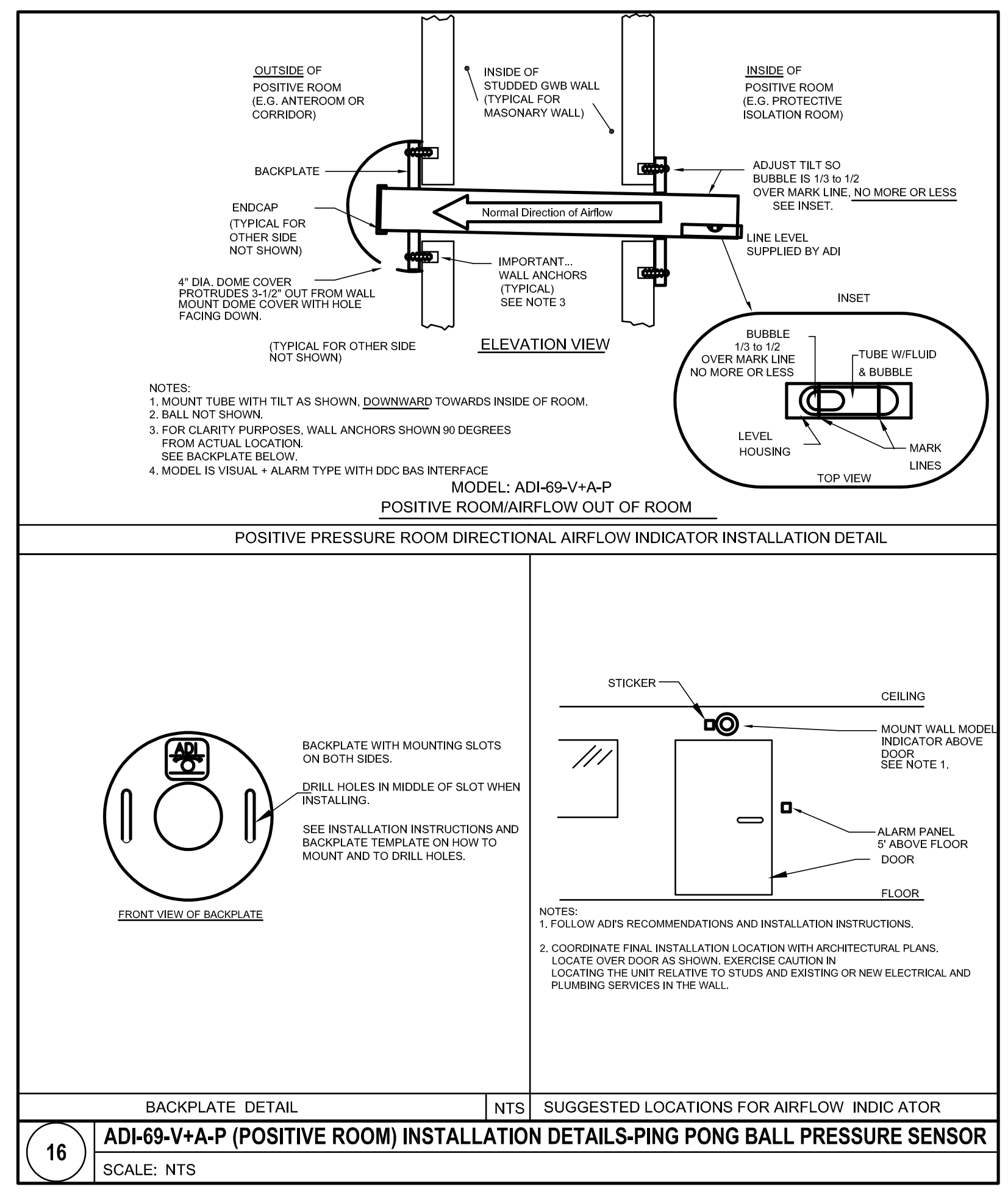
IF THIS SHEET IS NOT 30" x 42" IT IS A REDUCED SCALE PRINT - SCALE ACCORDINGLY



#	DATE	DESCRIPTION	#	DATE	DESCRIPTION
2	24MAY2019	CONSTRUCTION DOCUMENTS			
1	01MAY2019	70% CONSTRUCTION DOCS			
ISSUES			REVISIONS		





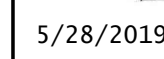




# CONSTRUCTION DOCUMENTS

2	24MAY2019	CONSTRUCTION DOCUMENTS						
1	01MAY2019	70% CONSTRUCTION DOCS						
#	DATE	DESCRIPTION	#	DATE	DESCRIPTION			
<b>ISSUES</b>			<b>REVISIONS</b>					

Approved By: XXX

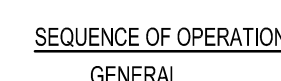


## M6.01









- ## ALARMS

- OCCUPIED MODE

- UNOCCUPIED MODE

- 
- EXHAUST  
OR RETURN  
VARIABLE  
AIR VOLUME  
BOX (VAV)

### SEQUENCE OF OPERATION

- UNOCCUPIED MODE

1. VAVE BOX SHALL OPERATE AT PRESET FLOW RATES (CFM) SHOWN ON THE PLANS (UNOCCUPIED SETPOINT). THE LOCAL CONTROLLER AND THE BAS SHALL MONITOR AIR FLOW RATE AT FF-XX02. THE LOCAL CONTROLLER SHALL MODULATE AIR FLOW RATE VIA FCV-XX03.
2. IN THE UNOCCUPIED MODE, VAVE BOX SHALL CONTINUE TO OPERATE AS DESCRIBED FOR THE OCCUPIED PERIODS IN ORDER TO MAINTAIN DESIGN AIR FLOW DIFFERENTIAL. SEE OCCUPIED SEQUENCE ABOVE.

## ALARMS

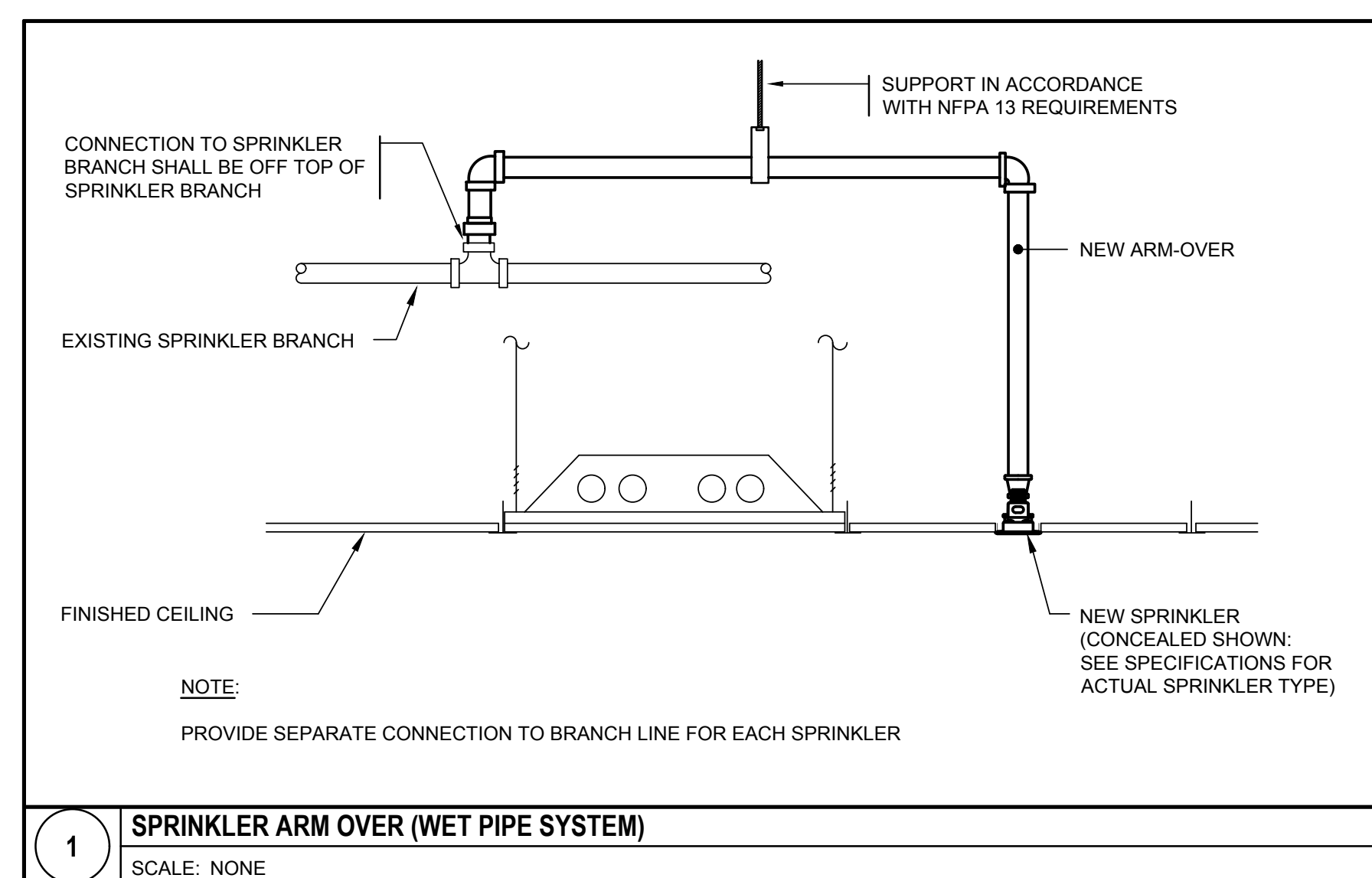
- OCCUPIED MODE

- IF THIS SHEET IS NOT 30" x 42" IT IS A REDUCED SCALE PRINT



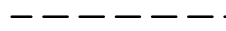












ABBREVIATIONS		
GENERAL	ACT	ACOUSTICAL CEILING TILE
	ACV	ALARM CHECK VALVE
	ADA	AMERICANS WITH DISABILITIES (ACT)
	AF	ANTIFREEZE
	AFF	ABOVE FINISHED FLOOR
	AFG	ABOVE FINISHED GRADE
	AHJ	AUTHORITY HAVING JURISDICTION
	AP	ACCESS PANEL
	ARCH	ARCHITECT
	BLDG	BUILDING
	BOP	BOTTOM OF PIPE
	BOR	BOTTOM OF RISER
	BSMT	BASEMENT
	CFH	CUBIC FEET PER HOUR
	CFM	CUBIC FEET PER MINUTE
	CL	CENTER LINE
	CLDI	CEMENT LINED DUCTILE IRON
	CLG	CEILING
	CNR	CONCENTRIC REDUCER
	COL	COLUMN
	CONC	CONCRETE
	CONT	CONTINUATION
	CP	CHROME PLATED
	CTE	CONNECT TO EXISTING
	CV	CONTROL VALVE
	DAV	DRY ALARM VALVE
	DCVA	DOUBLE CHECK VALVE ASSEMBLY
	DIA	DIAMETER
	DIM	DIMENSION
	DN	DOWN
	DPV	DRY PIPE VALVE
	DR	DRAIN RISER
	DWG	DRAWING
	EA	EACH
	ECC	ECCENTRIC REDUCER
	ELEV	ELEVATION
	ELEC	ELECTRIC
	EMER	EMERGENCY
	ETR	EXISTING TO REMAIN
	F	FIRE
F.F.	FINISHED FLOOR	
FA	FIRE ALARM	
FACP	FIRE ALARM CONTROL PANEL	
FCC	FIRE COMMAND CENTER	
FCVA	FLOOR CONTROL VALVE ASSEMBLY	
FD	FIRE DAMPER (WITH ACCESS PANEL)	
FDC	FIRE DEPARTMENT CONNECTION	
FDV	FIRE DEPARTMENT VALVE	
FDOVC	FIRE DEPARTMENT VALVE CABINET	
FFE	FINISHED FLOOR ELEVATION	
FHC	FIRE HOSE CABINET	
FLR	FLOOR	
FP	FIRE PUMP	
FS	FLOW SWITCH	
FT	FEET	
FURN	FURNISHED	
GALV	GALVANIZED	
GC	GENERAL CONTRACTOR	
GPH	GALLONS PER HOUR	
GPM	GALLONS PER MINUTE	
GWB	GYPSUM WALL BOARD	
GYP	GYPSUM	



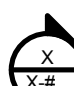
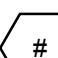


ABBREVIATIONS		
GENERAL	HD	HEAT DETECTOR
	HMR	HYDRAULICALLY MOST REMOTE
	IN	INCHES
	INV	INVERT
	KW	KILOWATTS
	LEG	LEGEND
	LF	LINER FEET
	LPH	LITERS PER HOUR
	LPM	LITERS PER MINUTE
	LTG	LIGHTING
	MAX	MAXIMUM
	MECH	MECHANICAL
	MEZZ	MEZZANINE
	MIN	MINIMUM
	MISC	MISCELLANEOUS
	N/A	NOT APPLICABLE
	NC	NORMALLY CLOSED
	NIC	NOT IN CONTRACT
	NO	NORMALLY OPEN
	NTS	NOT TO SCALE
	PA	PREACTION
	PAV	PREACTION VALVE
	PG	PRESSURE GAUGE
	PH	PENTHOUSE
	PIV	POST INDICATING VALVE
	PMP	PRESSURE MAINTENANCE PUMP
	PRV	PRESSURE REGULATING VALVE
	PWR	POWER
	QTY	QUANTITY
	RCP	REFLECTED CEILING PLAN
	REQ'D	REQUIRED
	RM	ROOM
	RPBP	REDUCED PRESSURE BACKFLOW PREVENTER
	RPM	REVOLUTIONS PER MINUTE
	ROR	RATE OF RISE
	SCH	SCHEDULE
	SDET	SMOKE DETECTOR
	SF	SQUARE FEET
	SP	SPRINKLER
	SPD	SPRINKLER DRAIN
	SPEC	SPECIFICATION
	SS	STAINLESS STEEL
	STD	STANDARD
	STL	STEEL
	T & D	TEST AND DRAIN ASSEMBLY
	TEMP	TEMPERATURE
TH	TEST HEADER	
TOR	TOP OF RISER	
TOS	TOP OF STAIRS	
TS	TAMPER SWITCH	
TYP	TYPICAL	
UNO	UNLESS NOTED OTHERWISE	
VIV	VALVE IN VERTICAL	
W/	WITH	
W/O	WITHOUT	
WAV	WET ALARM VALVE	
WIV	WALL INDICATING VALVE	
WRT	WITH RESPECT TO	

PIPE LINETYPES	
	PIPE (EXISTING)
	PIPE (ABOVE GRADE)
	PIPE (BELOW GRADE)

EQUIPMENT	
	WET ALARM CHECK VALVE
	DELUGE ALARM CHECK VALVE
	PREACTION ALARM CHECK VALVE
	DRY ALARM CHECK VALVE

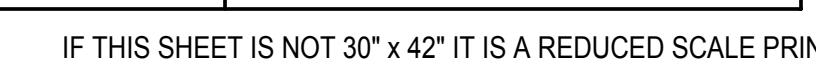
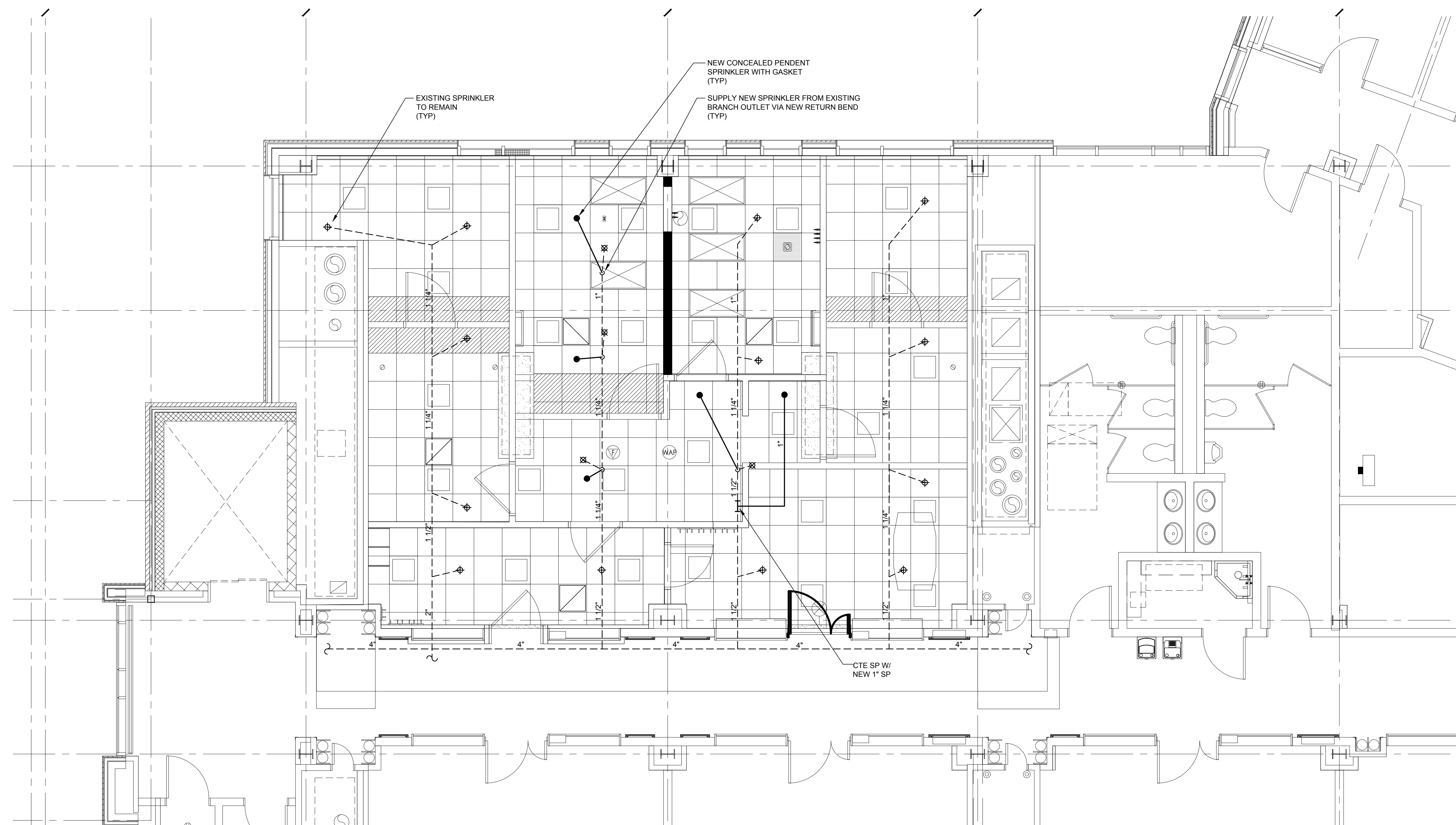
REFERENCE	
	X: DETAIL DESIGNATION NUMBER X.#: DETAIL DESIGNATION DRAWING
	XX: RISER SERVICE DESIGNATION #: RISER NUMBER DESIGNATION X.#: RISER DESIGNATION DRAWING
	X: SECTION DESIGNATION LETTER X.#: SECTION DESIGNATION DRAWING
	CALCULATION NODE
	SPRINKLER CALCULATION NODE
	REVISION TAG

SYMBOLS		
SPRINKLERS	●	CONCEALED SPRINKLER HEAD
	⊕	EXISTING SPRINKLER TO REMAIN
	⊗	EXISTING SPRINKLER TO BE REMOVED
	▽	SIDEWALL SPRINKLER
	○	UPRIGHT SPRINKLER
	●	212°F CONCEALED SPRINKLER HEAD
GENERAL	⌂	CONNECT TO EXISTING
	⊘	CAP OR END OF PIPE
	◄	CONCENTRIC REDUCER
	→	DIRECTION OF FLOW
	↗	DIRECTION OF SLOPE
	◄	ECCENTRIC REDUCER
		EXISTING TO BE REMOVED
	///	HEAT TRACE
	~	PIPE BREAK
	c	PIPE FITTING DOWN OR DROP
	o	PIPE FITTING TEE DOWN
	o	PIPE FITTING UP
		PIPE SLEEVE OR BEAM PENETRATION
	⊥	STRAINER
	⊥	WATER PROOF SLEEVE
VALVES	⌌	DRAIN VALVE
	⌌	BUTTERFLY VALVE
	⌌	CHECK VALVE
	⌌	DOUBLE CHECK VALVE ASSEMBLY
	⌌	FIRE DEPARTMENT VALVE CABINET
	⌌	FIRE DEPARTMENT VALVE
	⌌	FIRE HOSE CABINET
	⌌	FLOOR CONTROL VALVE ASSEMBLY
	⌌	POST INDICATING VALVE
	⌌	PRESSURE REDUCING VALVE
	⌌	RELIEF VALVE
	⌌	SUPERVISED CONTROL VALVE
	⌌	VALVE IN THE VERTICAL
SIGNALING	⌌	FLOW METER
	⌌	FLOW SWITCH
	⌌	PRESSURE GAUGE
	⌌	PRESSURE SWITCH
FIRE ALARM	⌌	ABORT SWITCH
	⌌	ELECTRIC BELL ANNUNCIATOR
	⌌	HEAT DETECTOR - FIXED TEMP
	⌌	HEAT DETECTOR - RATE OF RISE
	⌌	HORN & STROBE ANNUNCIATOR
	⌌	IONIZATION SMOKE DETECTOR
	⌌	MANUAL PULL STATION
	⌌	PHOTOELECTRIC SMOKE DETECTOR
	⌌	POWER SHUTDOWN/HVAC SHUTDOWN

SPECIFICATION INFO	
1.	REFER TO BASE BUILDING SPECIFICATIONS FOR MATERIALS AND INSTALLATION REQUIREMENTS.

IF THIS SHEET IS NOT 30" x 42" IT IS A REDUCED SCALE PRINT







DocuSign Envelope ID: 06D45A6-3B26-4169-9B77-296C76875B2B

IF THIS SHEET IS NOT 30" x 42" IT IS A REDUCED SCALE PRINT - SCALE ACCORDINGLY

1" = 3'-1"

1/2" = 1'-1"

1/4" = 3'-1"

1/8" = 6'-1"

1/16" = 12'-1"

1/32" = 24'-1"

1/64" = 48'-1"

1/128" = 96'-1"

1/256" = 192'-1"

1/512" = 384'-1"

1/1024" = 768'-1"

1/2048" = 1536'-1"

1/4096" = 3072'-1"

1/8192" = 6144'-1"

1/16384" = 12288'-1"

1/32768" = 24576'-1"

1/65536" = 49152'-1"

1/131072" = 98304'-1"

1/262144" = 196608'-1"

1/524288" = 393216'-1"

1/1048576" = 786432'-1"

1/2097152" = 1572864'-1"

1/4194304" = 3145728'-1"

1/8388608" = 6291456'-1"

1/16777216" = 12582912'-1"

1/33554432" = 25165824'-1"

1/67108864" = 50331648'-1"

1/134217728" = 100663296'-1"

1/268435456" = 201326592'-1"

1/536870912" = 402653184'-1"

1/1073741824" = 805306368'-1"

1/2147483648" = 1610612736'-1"

1/4294967296" = 3221225472'-1"

1/8589934592" = 6442450944'-1"

1/17179869184" = 12884901888'-1"

1/34359738368" = 25769803776'-1"

1/68719476736" = 51539607552'-1"

1/137438953472" = 103079215104'-1"

1/274877906944" = 206158430208'-1"

1/549755813888" = 412316860416'-1"

1/1099511627776" = 824633720832'-1"

1/2199023255552" = 1649267441664'-1"

1/4398046511104" = 3298534883328'-1"

1/8796093022208" = 6597069766656'-1"

1/17592186044416" = 13194139533312'-1"

1/35184372088832" = 26388279066624'-1"

1/70368744177664" = 52776558133248'-1"

1/140737488355328" = 105553116266496'-1"

1/281474976710656" = 211106232532992'-1"

1/562949953421312" = 422212465065984'-1"

1/1125899906842624" = 844424930131968'-1"

1/2251799813685248" = 1688849860263936'-1"

1/4503599627370496" = 3377699720527872'-1"

1/9007199254740992" = 6755399441055744'-1"

1/18014398509481984" = 13510798882111488'-1"

1/36028797018963968" = 27021597764222976'-1"

1/72057594037927936" = 54043195528445952'-1"

1/144115188075855872" = 108086391056891904'-1"

1/288230376151711744" = 216172782113783808'-1"

1/576460752303423488" = 432345564227567616'-1"

1/1152921504606846976" = 864691128455135232'-1"

1/2305843009213693952" = 1729382256910270464'-1"

1/4611686018427387904" = 3458764513820540928'-1"

1/9223372036854775808" = 6917529027641081856'-1"

1/18446744073709551616" = 13835058055282163712'-1"

1/36893488147419103232" = 27670116110564327424'-1"

1/73786976294838206464" = 55340232221128654848'-1"

1/147573952589676412928" = 110680464442257309696'-1"

1/295147905179352825856" = 221360928884514619392'-1"

1/590295810358705651712" = 442721857769029238784'-1"

1/1180591620717411303424" = 885443715538058477568'-1"

1/2361183241434822606848" = 1770887431076116955136'-1"

1/4722366482869645213696" = 3541774862152233910272'-1"

1/9444732965739290427392" = 7083549724304467820544'-1"

1/18889465931478580854784" = 14167099448608935641088'-1"

1/37778931862957161709568" = 28334198897217871282176'-1"

1/75557863725914323419136" = 56668397794435742564352'-1"

1/151115727451828646838272" = 113336795588871485128704'-1"

1/302231454903657293676544" = 226673591177742970257408'-1"

1/604462909807314587353088" = 453347182355485940514816'-1"

1/1208925819614629174706176" = 906694364710971881029632'-1"

1/2417851639229258349412352" = 1813388729421943762059264'-1"

1/4835703278458516698824704" = 3626777458843887524118528'-1"

1/9671406556917033397649408" = 7253554917687775048237056'-1"

1/19342813113834066795298816" = 14507109835375550096474112'-1"

1/38685626227668133590597632" = 29014219670751100192948224'-1"

1/77371252455336267181195264" = 58028439341502200385896448'-1"

1/154742504910672534362390528" = 116056878683004400771792896'-1"

1/309485009821345068724781056" = 232113757366008801543585792'-1"

1/618970019642690137449562112" = 464227514732017603087171584'-1"

1/1237940039285380274899124224" = 928455029464035206174343168'-1"

1/2475880078570760549798248448" = 1856910058928070412348686336'-1"

1/4951760157141521099596496896" = 3713820117856140824697372672'-1"

1/9903520314283042199192993792" = 7427640235712281649394745344'-1"

1/19807040628566084398385987584" = 14855280471424563298789490688'-1"

1/39614081257132168796771975168" = 29710560942849126597578981376'-1"

1/79228162514264337593543950336" = 59421121885698253195157962752'-1"

1/158456325028528675187087900672" = 118842243771396506390315925504'-1"

1/316912650057057350374175801344" = 237684487542793012780631851008'-1"

1/633825300114114700748351602688" = 475368975085586025561263702016'-1"

1/1267650600228229401496703205376" = 950737950171172051122527404032'-1"

1/2535301200456458802993406410752" = 1901475900342344102245054808064'-1"

1/5070602400912917605986812821504" = 3802951800684688204490109616128'-1"

1/10141204801825835211973625643008" = 7605903601369376408980219232256'-1"

1/20282409603651670423947251286016" = 15211807202738752817960438464512'-1"

1/40564819207303340847894502572032" = 30423614405477505635920876929024'-1"

1/81129638414606681695789005144064" = 60847228810955011271841753858048'-1"

1/162259276829213363391578010288128" = 121694457621910022543683507716096'-1"

1/324518553658426726783156020576256" = 243388915243820045087367015432192'-1"

1/649037107316853453566312041152512" = 486777830487640090174734030864384'-1"

1/1298074214633706907132624082305024" = 973555660975280180349468061728768'-1"

1/2596148429267413814265248164610048" = 1947111321950560360698936123457536'-1"

1/5192296858534827628530496329220096" = 3894222643901120721397872246915072'-1"

1/10384593717069655257060992658440192" = 7788445287802241442795744493830144'-1"

1/20769187434139310514121985316880384" = 15576890575604482885591488987660288'-1"

1/41538374868278621028243970633760768" = 31153781151208965771182977975320576'-1"

1/83076749736557242056487941267521536" = 62307562302417931542365955950641152'-1"

1/166153499473114484112975882535043072" = 124615124604835863084731911901282304'-1"

1/332306998946228968225951765070086144" = 249230249209671726169463823802564608'-1"

1/664613997892457936451903530140172288" = 501860498419343452338927647605129216'-1"

1/1329227995784915872903807060280344576" = 1003720996838686904677855295210258432'-1"

1/2658455991569831745807614120560689152" = 2007441993677373809355710590420516864'-1"

1/5316911983139663491615228241121378304" = 4014883987354747618711421180841033728'-1"

1/10633823966279326983230456482242756608" = 8029767974709495237422842361682067456'-1"

1/21267647932558653966460912964485513216" = 16059535949418990474845684723364134912'-1"

1/42535295865117307932921825928971026432" = 32119071898837980949691369446728269824'-1"

1/85070591730234615865843651857942052864" = 64238143797675961899382738893456539648'-1"

1/170141183460469231731687303715884105728" = 128476287595351923798765477786913079296'-1"

1/340282366920938463463374607431768211456" = 256952575190703847597530955573826158592'-1"

1/680564733841876926926749214863536422912" = 513905150381407695195061911147652317184'-1"

1/1361129467683753853853498429727072845824" = 1027810300762815390390123822295304634368'-1"

1/272225893536750770770699685945414569152" = 2055620601525630780780247644590609268736'-1"

1/544451787073501541541399371890829138304" = 4111241203051261561560495289181218537472'-1"

1/1088903574147003083082798743781658276608" = 8222482406102523123120990578362437074944'-1"

1/2177807148294006166165597487563316553216" = 16444964812205046246241981156724874149888'-1"

1/4355614296588012332331194975126633106432" = 32889929624410092492483962313449748299776'-1"

1/8711228593176024664662389950253266212864" = 65779859248820184984967924626899496599552'-1"

1/1742245718635204932932477990050652425728" = 131559718497640369969935849253798993199104'-1"

1/3484491437270409865864955980101304851456" = 263119436995280739939871698507597986398208'-1"

1/6968982874540819731729911960202609702912" = 526238873990561479879743397015195972796416'-1"

1/13937965749081639463459823920405219405824" = 1052477747981122959759486794030391945592832'-1"

1/27875931498163278926919647840810438811648" = 2104955495962245919518973588060783891185664'-1"

1/55751862996326557853839295681620877623296" = 4209910991924491839037947176121567782371328'-1"

1/111503725992653115707678591363241754446592" = 8419821983848983678075894352243135564742656'-1"

1/223007451985306231415357182726483508893184" = 16839643967697967356151788704486271129485312'-1"

1/446014903970612462830714365452967017786368" = 33679287935395934712303577408972542258970624'-1"

1/892029807941224925661428730905934035572736" = 67358575870791869424607154817945084517941248'-1"

1/1784059615882449851322857461811868071145472" = 13471715174158373884921430963589016903588256'-1"

1/3568119231764899702645714923623736142290944" = 26943430348316747769842861927178033807176512'-1"

1/7136238463529799405291429847247472284581888" = 53886860696633495539685723854356067614353024'-1"

1/14272476927059598810582859694494944569163776" = 107773721393266991079371447708712135228706048'-1"

1/28544953854119197621165719388989889138327552" = 215547442786533982158742895417424270457412096'-1"

1/57089907708238395242331438777979778276655104" = 431094885573067964317485790834848540914824192'-1"

1/114179815416476790484662877555959556553310208" = 862189771146135928634971581669697081829648384'-1"

1/228359630832953580969325755111919113106620416" = 1724379542292271857269943163339394163659296768'-1"

1/456719261665907161938651510223838226213240832" = 3448759084584543714539886326678788327318593536'-1"

1/913438523331814323877303020447676452426481664" = 6897518169169087429079772653357576654637187072'-1"

1/1826877046663628647754606040895352904852963328" = 13795036338338174858159545306715153309274374144'-1"

1/3653754093327257295509212081790705809705926656" = 27590072676676349716319090613430306618548748288'-1"

1/7307508186654514591018424163581411619411853312" = 55180145353352699432638181226860613237097496576'-1"

1/14615016373309029182036848327162823238823706624" = 110360290706705398865276362453721226474194993152'-1"

1/29230032746618058364073696654325646477647413248" = 220720581413410797730552724907442452948389986304'-1"

1/58460065493236116728147393308651292955294826496" = 441441162826821595461105449814884905896779772608'-1"

1/116920130986472233456294786617302585910589652992" = 882882325653643190922210899629769811793559545216'-1"

1/233840261972944466912589573234605171821119105824" = 1765764651307286381844421799259539623587119090432'-1"

1/467680523945888933825179146469210343642238211648" = 3531529302614572763688843598519079247174238180864'-1"

1/935361047891777867650358292938420687284476423296" = 7063058605229145527377687197038158494348476361728'-1"

1/1870722095783555735300716585876841374568952846592" = 14126117210458291054755374394076316988696952723456'-1"

1/3741444191567111470601433171753682749137905693184" = 28252234420916582109510748788152633977393905446912'-1"

1/7482888383134222941202866343507365498275811386368" = 56504468841833164219021497576305267954787810893824'-1"

1/14965776766268445882405732687014730996551622772736" = 113008937683666328438042995152610535909575621787648'-1"

1/29931553532536891764811465374029461993103245545472" = 226017875367332656876085990305221071819151243575296'-1"

1/59863107065073783529622930748058923986206491090944" = 452035750734665313752171980610442143638302487150592'-1"

1/119726214130147567059245861496117847972412982181888" = 904071501469330627504343961220884287276604974301184'-1"

1/239452428260295134118491722992235695944825964363776" = 1808143002938661255008687922441768574553209948602368'-1"

1/478904856520590268236983445984471391889651928727552" = 3616286005877322510017375844883537149107419897204736'-1"

1/957809713041180536473966891968942783779303857455104" = 7232572011754645020034751689767074298214839794409472'-1"

1/19156194260823610729479337839378855675586077149008" = 14465144023509290040069503379534148596429679588818944'-1"

1/38312388521647221458958675678757711351172154298016" = 28930288047018580080139006759068297192859359177737888'-1"

1/76624777043294442917917351357515422702344308596032" = 57860576094037160160278013518136594385718718355475776'-1"

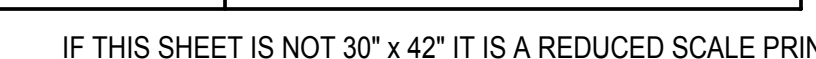
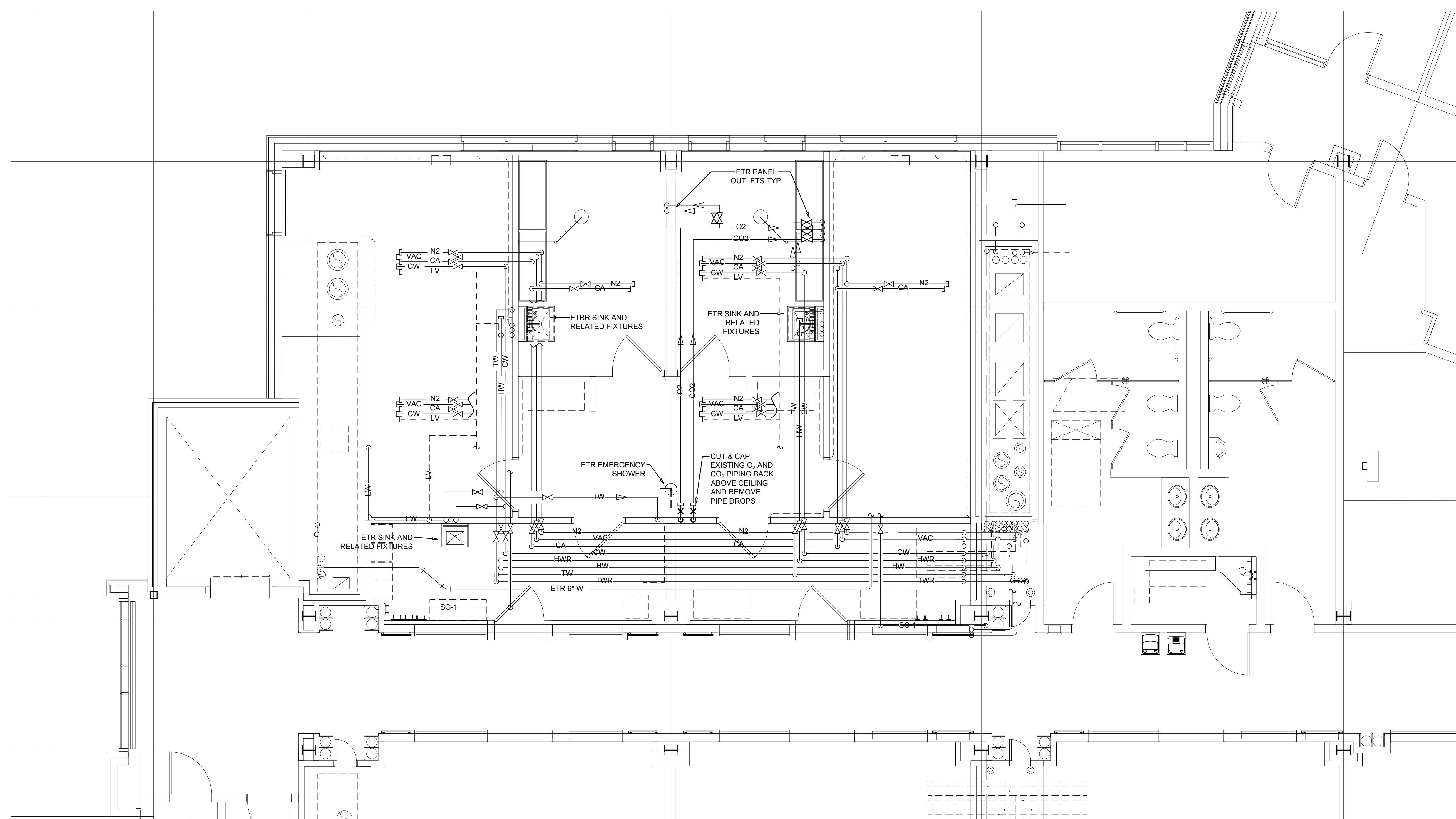
1/153249554086588885835834702715030845404688617192064" = 115721152188074320320556027036271188771437436710951552'-1"

1/306499108173177771671669405430061690809377234384128" = 231442304376148640641112054072542377542874873421903104'-1"

1/612998216346355543343338810860123381618754468768256" = 462884608752297281282224108145084755085749746843806208'-1"

1/122599643269271108668667762172024676323

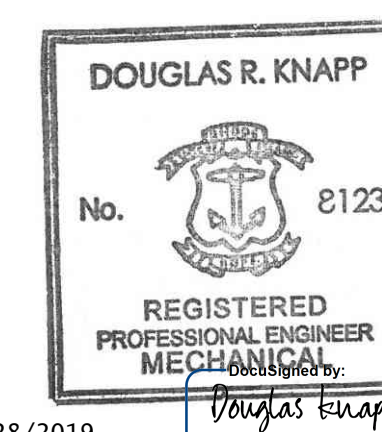






[illegible]

Checked By: DH



## P4.02