

URI Informed

Vol. 26 Issue 2 Summer 2019

THE URI EMPLOYEES' NEWSLETTER

The Sounds of Summer on URI's Kingston Campus

by Dave Lavallee

Ah, the sights, sounds and aromas of summer on a university campus -- birds singing, flowers blooming, leaves rustling in the breeze and new students laughing and smiling tentatively as their orientation leaders try to make them feel at home.

At the University of Rhode Island's Kingston Campus, you can also add the sensory barrage of bulldozers, dump trucks, forklifts and back-hoes, crews wearing hard hats and bright green and orange vests and of course traffic and parking changes. The results of this construction ballet will be more dynamic, comfortable and technological student neighborhoods; teaching,

learning and research space; athletic facilities and transportation systems.

There are the major projects like the \$150 million College of Engineering complex, including the Fascitelli Center for Advanced Engineering, which when opened in the fall, will set a new global standard for engineering education and research and the 500-bed, \$94 million Brookside Apartments, which will open in January 2020. But also well underway are numerous shorter term, but still important projects, including the overhaul of Fraternity Circle utilities and roadway, a new spur from the William C. O'Neill

continued on page 2



The new Fascitelli Center for Advanced Engineering towers over the Kirk Center for Advanced Technology in the foreground. URI photo by Nora Lewis

THE
UNIVERSITY
OF RHODE ISLAND

THINK BIG  WE DOSM



URInformed

Nancy Gillespie, Editor
Charlene Dunn, Assistant Editor

Editorial Board

Michelle Curreri

Contributors

Laura Kenerson
Kathie McKinstry
Mary Beth Arnold
Shawn Simmons

If you have a suggestion for an article about a co-worker or colleague, or perhaps information about an event, or simply have an interest in being involved with the newsletter, you may send your request to:

URInformed, 73 Upper College Road,
Kingston Campus

or contact us by e-mail at:
NGillespie@uri.edu

The editorial board reserves the right to select the material printed and to edit it to conform to space restrictions.

Please get involved! This is your newsletter and we need your support to make it work.

URI is an equal opportunity employer committed to the principles of affirmative action and values diversity.

Construction...continued from page 1

Bike path to the Kingston Campus, and the installation of artificial turf and lights at Meade Stadium, the home of URI football.

"URI is experiencing what could be a historic amount of construction activity undertaken in a very short timeframe," said Vice President for Administration and Finance Abigail Rider. "From Brookside's new cafe and beautiful park-like landscaping to the transformational Fascitelli Center for Advanced Engineering, we will be welcoming back our students, faculty and staff to some of the best living, learning, athletic and recreational facilities in the world."

When the Kingston Campus projects are combined with work being done at the Narragansett Bay Campus and the W. Alton Jones Cam-

pus, the investment totals \$286 million. They will enhance the University's existing student residential facilities and infrastructure, academic buildings, research and active learning spaces, athletic facilities, transportation and sustainability programs and even the historic Watson Farm House, the only building remaining from the original farm purchased in 1888 to establish the state agricultural school that become the University.

Here are some highlights:

Fine Arts Building Envelope, Phase 1, \$12.4 million, completion August 2019

A. Exterior stucco being removed, underground work completed

B. New unit masonry exterior, roofs, replacing heating, ventilation and air conditioning system

College of Engineering, \$150 million, with majority of funding provided by two voter-approved bond issues. New building, named the Fascitelli Center for Advanced Engineering, set to open fall 2019, with a renovated Bliss Hall to open January 2020.

Will house more and better teaching and learning spaces and more opportunities for Rhode Island businesses to work with students and faculty in a facility that will house the best technology and equipment. Students will graduate as innovators and leaders, ready to move Rhode Island into a new era of prosperity.

A. The new 190,000-square-foot facility will include research and classroom space for chemical, electrical, computer, biomedical, mechanical, industrial and systems, and civil and environmental engineering in a collabora-

continued on page 3



Table of Contents

<i>URI Construction Projects</i>	<i>p. 1</i>
<i>New Campus Cameras</i>	<i>p. 4</i>
<i>Word Search Winner</i>	<i>p. 4</i>
<i>House of Hope Garden</i>	<i>p. 5</i>
<i>Pets Corner</i>	<i>p. 7</i>
<i>Word Search</i>	<i>p. 9</i>
<i>Comings & Goings</i>	<i>p.10</i>
<i>Cook's Corner Recipes</i>	<i>p.12</i>
<i>Awards</i>	<i>back cover</i>

Construction...continued from page 2

tive environment, as well as general University classrooms.

B. A unique structural system will be used for the central portion of the Fascitelli Center. A four-story "Bridge" will consist of three, 270-foot trusses that span 158 feet. The trusses are 40 feet apart. The Bridge will house teaching labs, departmental offices, research labs and graduate student areas.

C. Phase 2 is a renovation of Bliss Hall, with an addition of 15,000 square feet is partially funded with three grants from the Governor's Commission on Disability totaling \$578,000. Bliss Hall, which was built in 1928, is the historic home of the College of Engineering.

Brookside Apartments, \$94 million, completion set for January 2020

A. Will primarily feature apartment suites of six and four single-occupancy bedrooms. Each suite will be furnished and has a full kitchen and two bathrooms.

B. Will feature a 40-seat cafe and an outdoor seating area that runs along restored White Horn Brook and surrounding landscape. The Cafe will be the first facility inside a housing unit at URI run by the nationally recognized URI Dining Services. A footbridge will connect Brookside to nearby residence halls.

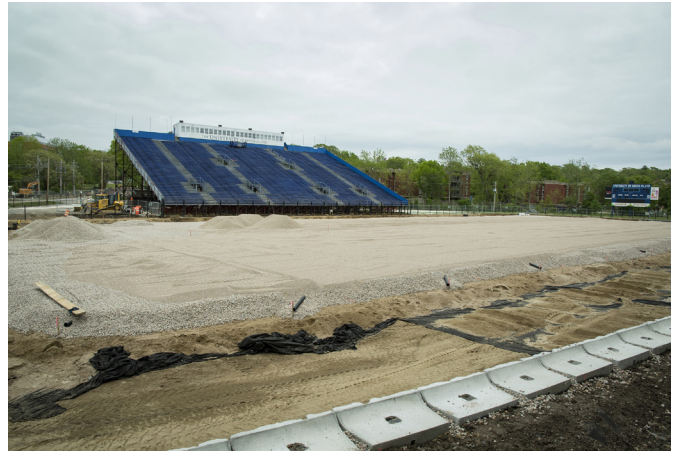
C. Will encourage connection among students, facilitate learning in comfortable, small study areas, help students learn life skills, like how to plan and prepare meals, and emphasize the importance of green spaces and sustainable transportation options. Meets increasing demand of returning students to stay on campus. Designed for juniors and seniors.

Other Division of Student Affairs projects, \$20 million

A. Electrical upgrades in the Roger Williams residential complex, including electrical infrastructure, substantial completion by end of August.

B. Roof replacement at Aldrich, Burnside, Adams, Coddington, Dorr, Ellery and Hopkins residence halls. Aldrich, Burnside, Adams completed, February 2019; Coddington, Dorr, Ellery and Hopkins set for completion end of August.

C. Security camera installation at 28 locations.



Meade Stadium. URI photo by Nora Lewis

D. Fraternity Circle transformation, Phase 1, utilities, completion set for September 2019

E. Renovation of Heathman Residence Hall to provide study lounges for the Living/Learning Community for pharmacy and nursing students

Athletics, \$4.1 million for installation of artificial turf and lights and other upgrades at Meade Stadium, home of URI Rams football, completion set for September 2019

A. Meant to accelerate the growth of the football program and expand the facility's use. The new surface and lights will provide a durable field with increased options for television broadcasts, night games, and a variety of University and community events.

B. Project supported by University of Rhode Island alumni two of whom committed \$1 million each. Of the total \$4.1 million project, alumni contributed nearly \$3 million.

Next milestones, setting of light pole bases



A portion of the new bike path spur from the William C. O'Neill Bike Path, with the barns of Peckham Farm to the east. URI photo by Nora Lewis

continued on page 6

New Cameras Allow URI Community Members, Public to View Quadrangle, Narragansett Bay Campus

by Dave Lavallee

See the University of Rhode Island's Kingston Campus Quadrangle on a bright spring day with hundreds of new students gathering for orientation. Or months from now, check it out after a winter storm, with snow glistening off the campus' historic buildings. If you want to see whether the research vessel Endeavor is in port at URI's Narragansett Bay Campus, you can do that too, whether you live in Burrillville, San Francisco or Tokyo.

With the installation of new, high-definition, day-night Avigilon cameras at the Kingston and Narragansett Bay campuses, students, alumni, parents, faculty and staff can view the two campuses from their computers, their phones or tablets, 24 hours a day.

The University purchased three new cameras, one mounted on the roof of Davis Hall and one at the Horn Building at the Bay Campus. The third camera at Bliss Hall will be activated in the fall when the \$150 million engineering construction project is complete.

Not only do the cameras give all members of the University community and public the opportunity to see the campuses whenever they'd like, they also provide the Department of Marketing and Communications and other campus departments the opportunity to capture live video for use on websites. The cameras went live to the public just in time for Commencement.



A view of the Quad with Davis Hall in the foreground. One of the cameras is located on Davis Hall.

URInformed Word Search Winner

Congratulations to Janet Deignan, Education!
Please contact Shawn Simmons in the Provost's Office (4-4410) to claim your prize.

Check out the Word Search on page 9!

URI Master Gardeners Create Gardens at House of Hope to Engage Homeless in Growing Food

by Todd McLeish

The formerly homeless residents at House of Hope in Warwick have another reason to feel hopeful. Thanks to a team of University of Rhode Island Master Gardeners, they are learning about gardening and helping to grow their own vegetables and herbs.

Led by Master Gardeners Kate Aubin and Stephanie Trabucco, both Cranston residents, the project aims to engage the residents in gardening while also breaking down barriers with nearby neighbors.

"It's a place where they can just go out and be in a calming, quiet, safe space, get their hands dirty if they want, and smell the flowers," said Aubin. "Once we get them more involved, they'll feel a sense of pride in seeing what they've grown."

"I like that we're providing people with good food who probably haven't had good food in a long time," added Trabucco.

House of Hope Community Development Corp. seeks to prevent homelessness by providing permanent housing to homeless individuals and families while delivering the necessary services to ensure clients do not become homeless again. The organization started a garden at its

Shippee Street facility in 2015, which was taken over by the Master Gardeners in 2016 and expanded to the House of Hope property on Fair Street.

Jackie Mercado, a case manager at House of Hope, was so excited about the garden that she even enrolled to become a URI Master Gardener to contribute to the project.

"It has been a beautiful opportunity to learn from the URI Master Gardeners," she said. "I'm using my new found skills to show residents a sustainable way of living, bettering health, and helping rebuild their green thumb."

At Fair Street, the first garden constructed was what Aubin called a wheelchair garden – a raised bed enabling someone to tend the garden from a wheelchair.

"Bobby was so excited that we were making a garden accessible for him," Aubin said. "It's the perfect height for him, and he's become very involved in the garden. He selected the plants he wanted to tend, and he's out here regularly maintaining it."

Four more traditional raised beds – each 4 by 8 feet in size – were constructed in the front yard, surrounded by a fence to keep out the

continued on page 6



URI Master Gardeners Kate Aubin (left) and Stephanie Trabucco check on some of the plants in the House of Hope garden in Warwick, which they and other Master Gardeners built to benefit the formerly-homeless residents at the facility. Photo by Todd McLeish.

Garden...continued from page 5

hungry rabbits and woodchucks that live in the area. House of Hope residents were surveyed about what they wanted to have planted, and occasional house meetings are held to keep them involved.

“In previous years, the residents were happy to get whatever we planted, but they weren’t necessarily sure what to do with it,” said Trabucco. “This year we’re helping them learn what the food is, how you pick it, how you cook it, and how you store it. We’re getting them involved in the whole process of the circle of life of the food.”

About 20 local Master Gardeners helped to build the garden, and they all continue to put in time each week helping to maintain it as well. Occasional events are held on site that include cooking demonstrations, food preservation lessons, soil testing and composting lessons.



URInformed is now on the Web
at

<http://web.uri.edu/urinformed/>

**Browse the current issue of
URInformed**

“Part of the reason for the events is to bring the community to House of Hope to help everyone live together more peacefully and more comfortably,” Trabucco said.

“It’s really important to break down the barriers within the community, and we can do that in some way with this garden,” Aubin said. “When the neighbors see the garden and all the Master Gardeners working on it, they get excited and realize that we all can work together and get along.”

Mercado agrees, and she has already seen how the garden is bringing the community together.

“The garden has opened a new relationship for residents and their neighbors,” she said. “It has shown the mutual interest that we all have for horticulture, building positive interactions, and conversations.”

Construction...continued from page 3

and artificial turf arriving in July.

C. First home football game under the lights Sept. 7.

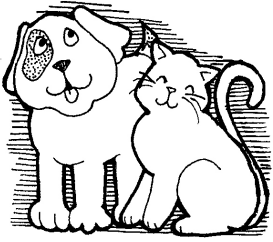
Bike path extension, \$2.9 million, completion expected December 2019

A. A 2-mile extension from the William C. O’Neill Bike Path that will provide direct access to the University’s Kingston Campus. Paving has been completed through Peckham Farm to Route 138, where the path will continue to the Kingston Campus and end at Brookside Hall

B. The bike path connector is a key element in the University’s Campus Master Plan, which calls for enhanced pedestrian and improved bicycle access on campus, including bike lanes on campus roads and additional bike racks. Plans call for a special hand-activated signal to assist cyclists and pedestrians in crossing Route 138.

C. Partially funded by a Rhode Island Department of Environmental Management grant of \$2,181,390.

The Pets Corner



Max is a 2-year old rescue kitty. **Aubrey** is a 4-year old rescue pup. We think she is a shepherd-cur mix.

Dawn Bergantino, Communications and Marketing

Invitation to the Pets Corner

We know how much people like their pets. It's up to you to show us just how much.

Please send us your favorite photo of you and your pet.

We need a high resolution jpg.

Your name and department.

Your pet's name, breed

One or two sentences about your pet. Maybe the photo will tell us all we need to know.

Contact:

Nancy Gillespie
ngillespie@uri.edu



Peter (The Girl) is an 8-year old Calico cat, rescued during a snowstorm in Worcester, MA.

Shaun Holt, Communications and Marketing



Cassie is a 5-year-old English Cocker Spaniel. She spent the first year of her life, before we adopted her, in a breeder's kennel after being returned to the breeder when a heart murmur was discovered by her original owner.

*Tracey A. Manni
Communications and Marketing*



Cassie Shredding. She is feisty and loves to tear up magazines.



Weekly Grocery Shopping!!



A	B	M	O	N	E	Y	D	N	A	R	B
N	A	W	A	L	L	E	T	E	L	A	S
A	G	P	Z	N	J	H	S	E	R	F	L
E	S	R	H	T	A	E	Q	V	K	D	E
L	A	O	Z	A	R	G	R	R	B	E	T
C	I	D	D	V	R	E	E	A	A	L	A
H	S	U	I	Q	G	M	S	R	K	I	I
E	L	C	X	I	O	K	A	T	E	Y	C
C	E	E	S	T	E	C	R	C	R	R	O
K	S	T	S	T	K	A	Z	Q	Y	I	S
E	E	U	W	P	C	N	O	R	P	A	S
R	C	O	U	P	O	N	S	W	S	D	A

- | | | | |
|--------------|-------------|--------------|--------------|
| 1. Ads | 7. Basket | 13. Customer | 19. Pharmacy |
| 2. Aisles | 8. Brand | 14. Dairy | 20. Produce |
| 3. Apron | 9. Cart | 15. Deli | 21. Rack |
| 4. Associate | 10. Checker | 16. Fresh | 22. Register |
| 5. Bags | 11. Clean | 17. Manager | 23. Sale |
| 6. Bakery | 12. Coupons | 18. Money | 24. Service |
| | | | 25. Wallet |

DIRECTIONS: The object is to find the 25 hidden words within the grid. Words can be found horizontally, vertically, diagonally, backwards or forwards. Return the completed wordsearch to Shawn Marie Simmons, Provost Office, Green Hall, Room 109. Please include your name, address and e-mail with your entry. A drawing of all correct entries will determine the winner. A URI prize will be given to the winning entry.

The winner will be announced in the next issue of URInformed. Good Luck!

Name _____ Dept. _____
 Campus Address _____
 Phone Ext. _____ E-mail _____

Personnel Script

Job Opportunities

The classified and non-classified application process is now automated so that you can apply on-line for positions here at the University. You will also be able to review the status of your application during the recruitment process, update your on-line application, and apply for positions that become available in the future. For the job opportunities visit:

<https://jobs.uri.edu>

We Welcome the Following People to our Community...

Venkata Aditya Kiran Adiraju (Chemistry); Kimberly Bernard (Data Spark); Joelle Brown (Payroll Office); Karl Calvo (Facilities) Scott Campbell (GSO Marine Office); Christine Clarkin (Physical Therapy); Emily Diamond (Communication Studies); Chelsea Farrell (Criminology & Criminal Justice); Jessica Federman (Communicative Disorders); Monica Gallego (Languages); David Gilliland (Music); Mary-Liz Grady (Payroll Office); Eric Hahn (GSO Marine Office); Richard Hargis (GSO Marine Office); Desiree Harpel (Computer Science); Matthew Hodler (Communication Studies); Mary Katherine Hutchinson (Dean Nursing); Kathleen Kantor (Graduate School); Roland Lariviere Jr. (Research Office); Pengfei Liu (CELS Academic Unit 2); Emily Lynch (Political Science); Caitlin Nash (Health Studies); Peter Nye (CEPS Strategic Initiatives); Jason Parent (CELS Academic Unit 2); Lee Podedworny Jr. (Police); Tami Reiss (Women's Basketball); Jillian Rounds (HRL Residential Education); Daniel Sheehan (HRL M&R Facilities); Megan Shoniker (Women's Basketball); Amy Stamates (Psychology); John Stringer (Institutional Research Office); Sarah Toatley (Honors Program); C. Michael Trottier (Dean Engineering); Krishna Venkatasubramanian (Computer Science); Tina Verria (Payroll Office); Valerie Villucci (Women's Tennis); Ashlee Viveiros (Nursing Instruction); Jan Voogd (GSO Research)...

... and Say Goodbye to ...

Michelle Caetano (Pharmacy Practice); Benjamin Leveillee (Media & Technology Services); Katherine Moniz (CCE); Steven Williamson (Political Science); Marcus Reilly (Women's Basketball); Scott Rasmussen (CELS Academic Unit 2); Stephen Jaegle (Computer Science); David Robinson (GSO Research); Dottie Lou-Deines (Dean Business); Kevin Smith (Athletics' Custodial Services); Steven Henderson (Custodial Services); Coral Maack (Undergraduate Admissions); Eileen Campanale (Research Office); Michael Browner Jr. (School of Education); Mitzi Dusin (Training Room); Matthew MacKnight (Writing & Rhetoric); Caitlin Mandel (GSO Research); Tracy Cardillo (Payroll Office); Nicole Rohr (GSO Coastal Institute); David Brown (Computer Science); Amy Bothun (Recreational Services); Celine Jacquenod-Garcia (Languages); Nicholas Schavone (Maintenance & Repair); Maegan Cook (CELS Academic Unit 3) Castine Audette (EEC Summer Residential Camps); Sara Murphy (Nursing Instruction); Ashton Avila (Film Studies); Russell Mason Jr. (Dining Board Operations); Shayna Bassett (Psychology); Alice Doyle (GSO Research); Morgan Haldeman (CELSA Academic Unit 2); Collin Syfert (Communication Studies); Samantha Dubois (Cancer Prevention Research Ctr); Kevin Olsen (Communication Studies); Gilber Barnes (Facilities Other - Utilities); Racine Amos (Women's Center); Brandi Cotton (Nursing Instruction); Roberta Opara (Business Instruction); A. Daynia LaForce (Women's Basketball); Hongyan Yuan (Mech., Ind. & Sys. Engineering) Yi Zheng (Mech., Ind & Sys. Engineering); Eric Kaldor (Online Learning & Teaching); James Fox (Memorial Union); Giyani Narayan (Music); Yipping Zhang (Languages); Gordon Brackee (Research Office); Gay Antonia Franz (GSO Research); Marissa Meucci (Health Studies); Yuann Zhang (Biomedical & Pharmaceutical Sc); Juliana Breines (Psychology); Lisa Bergson (Communication Studies); Brahim Boussidi (GSO Research); Eteven Engborg (CELS Academic Unit 1); Keith Parent (Maintenance & Repair); Mary Bourbonniere (Nursing Instruction)

continued on page 11

Cook's Corner

Share your favorite recipes in the Cook's Corner

Two-Ingredient Dough Turkey Pepperoni Pizzas

Ingredients:

- 1 cup plain fat free Greek yogurt
- 1 cup white self-rising flour
- 1 cup canned tomato sauce
- $\frac{3}{4}$ cup shredded part-skim mozzarella cheese
- 20 pieces small, thinly sliced turkey pepperoni
- 4 TBSP grated Parmesan cheese
- 2 TBSP basil
- 4 pinches, or to taste crushed red pepper flakes

Directions:

1. Preheat oven to 375°F. Line a baking sheet with parchment paper.

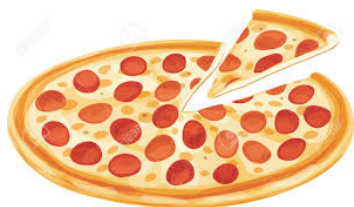
2. Place yogurt and flour in a large bowl; stir well with a wooden spoon until just combined and then keep mixing dough in bowl with your hands until smooth (about 2 minutes of kneading). If dough is too sticky to knead, add more flour, 1 Tbsp at a time, until no longer sticky.

3. Place a large piece of parchment paper on a work surface and sprinkle with a little flour; place dough on paper. Use a knife to cut dough into 4 equal pieces. Use a rolling pin to roll each piece of dough into a 6-7 inch oval. Place on prepared baking sheet; bake until dough is beginning to turn lightly golden, about 18 minutes.

4. Remove from oven and top each with $\frac{1}{4}$ c sauce, 3 Tbsp mozzarella cheese and 5 pieces pepperoni. Return to oven and bake a few more minutes until dough is cooked through and cheese is melted.

5. Serve each sprinkled with 1 Tbsp Parmesan, $\frac{1}{2}$ Tbsp basil and a pinch red pepper flakes.

Serving size: 1 pizza



Personnel...continued from page 10

struction); Kate Bush (History); Joshua Briggs (Custodial Services); Sandra Potter (Business Instruction); Krystle Alexander (Police); Bhik Sen (Ryan Institute Neuroscience); Lori Merolla (Communication Studies); Aaron Piepmeier (Kinesiology); Michael Geary (Women's Basketball); Jorge Mendez Seijas (Languages); Sarah Daly-Van Oot (Communication Studies); Sahm Brittani (Communication Studies); Sakeenah Lambert (Women's Basketball); Clyde Manns Jr. (Women's Basketball); Mackenzie Powers (AHC Finance & Administration)...

... and Best Wishes To Those Who Retired

Mary Ann Johnson (Health Services); Linda Laurenzo (Nonviolence & Peace Studies); Patricia Tiernan (HRL Facilities); James Opaluch (CELS Academic Unit 2); Sharon Charlton (Enrollment Services); John Riccitelli (HRL Business Operations); James Cacciola (Payroll Office); Kathleen Mahoney (Enrollment Services); Shmuel Mardix (Elec, Computer & Bio Eng.); Fritz Wensch (Philosophy); John Giacchi (Memorial Union); Anthony Mallilo (CELS Academic Unit 1); Barbara Pugh (Art); Sandra Fontana (GSO Research); Susan Faziolo (Health Services); Bryna Wortman (Theatre); Sze Yang (Chemistry); Jay Singer (Communicative Disorders); Thomas Morin (Languages); Jhodi Redlich (Communications & Marketing); Sandra Ketrow (Communication Studies); Jerome Sidio (Facilities Services Admin.); M. Liliana Gonzalez (Computer Science); Rosemarie Pegueros (History); Peter August (CELS Academic Unit 2); Louis Kirschenbaum (Chemistry); Jonathan Alberts (GSO Research); Elaine Hall (HRL Facilities); Karen Chilson (Human Resource Administration); David Adelman (GSO Research).

In Memoriam



- ❖Rodger B. Dowdel, Professor Emeritus, Mechanical Engineering
- ❖George T. Fitzelle, Professor Emeritus, Human Development and Family Studies
- ❖Cathy Inglese, Coach (ret.), Women's Basketball



THE
UNIVERSITY
OF RHODE ISLAND
OFFICE OF THE
PRESIDENT

THINK BIG  WE DO™

LIFETIME SERVICE SOCIETY



2019

**LIFETIME SERVICE SOCIETY
INDUCTION AND BRICK
DEDICATION CEREMONY**

honoring retired staff and faculty
members who have been employed at
the University for 40 or more years.

**Friday, September 27, 2019
1:30 p.m.**

Robert J. Higgins Welcome Center
URI Kingston Campus

Parking is available behind the Higgins Welcome Center at 75 Briar Lane.

*For additional information, please contact
Paula Santos pmsantos@uri.edu or 401.874.2014*

**Lifetime Service
Society Inductees:**
(retired as of December 2018)

Wendy G. Asting, 44 years
Judith Barnett*, 47 years
Wendy G. Belue-Brodeur, 40 years
Leo Carroll, 46 years
Albert J. Della Bitta, 47 years
Peter A. Ferrara, Jr., 45 years
Deborah A. Grant, 40 years
Linda Taylor Green, 42 years
Carolyn C. Hames, 45 years
Sara C. Hickox, 42 years
Eric Klos, 43 years
Surendra S. Malik, 56 years
John J. Poggie, Jr., 49 years
Donald D. Robadue, Jr., 41 years
Henry R. Schwarzbach, 42 years
Linda Sebelia, 43 years
Mario Trubiano, 40 years
J. Vernon Wyman, 40 years

* posthumous