

# URI Informed

THE URI EMPLOYEES' NEWSLETTER

Vol. 29 Issue 3 SUMMER 2021

## URI Board of Trustees Names Marc Parlange University of Rhode Island President

The Board of Trustees of the University of Rhode Island has announced the selection of Professor Marc B. Parlange, provost and senior vice president of Monash University in Australia, as URI's 12th president. He will succeed David M. Dooley, who joined URI in July 2009 and has overseen the transformation of URI into a leading research institution with a growing recognition of programs of distinction. Parlange's appointment is effective August 1.

*by Linda Acciaro*  
Born in Providence, Rhode Island, to parents who emigrated from France and Ireland, Parlange will leave Monash, a public university based in Melbourne, Victoria, Australia, with an enrollment of more than 85,000 undergraduate and graduate students. He will take over Rhode Island's flagship public research University with its approximately 17,000 undergraduate and graduate students, a budget of more than  
*continued on page 2*



Marc Parlange

THE  
UNIVERSITY  
OF RHODE ISLAND

THINK BIG  WE DO<sup>SM</sup>



## **URInformed**

Nancy Gillespie, Editor  
Charlene Dunn, Assistant Editor

### *Editorial Board*

Michelle Curreri

### *Contributors*

Laura Kenerson  
Kathie McKinstry  
Mary Beth Arnold  
Shawn Simmons

If you have a suggestion for an article about a co-worker or colleague, or perhaps information about an event, or simply have an interest in being involved with the newsletter, you may send your request to:

*URInformed*, 73 Upper College Road,  
Kingston Campus

or contact us by e-mail at:  
**NGillespie@uri.edu**

The editorial board reserves the right to select the material printed and to edit it to conform to space restrictions.

Please get involved! This is your newsletter and we need your support to make it work.

*URI is an equal opportunity employer committed to the principles of affirmative action and values diversity.*

### **President...***continued from page 1*

\$800 million, four campuses and a global reputation for excellence in coastal and ocean sciences, environmental and ocean engineering, health care and health sciences, chemical and forensic sciences and cybersecurity.

Prior to joining Monash, Parlange was dean of the Faculty of Applied Science at the University of British Columbia in Canada. Previously, Parlange served as dean of the School of Architecture, Civil and Environmental Engineering from 2008 through 2013 and as director of the Institute of Environmental Engineering from 2004 through 2007 at the École Polytechnique Fédérale de Lausanne (EPFL) in Switzerland. He has also held research and teaching appointments at Johns Hopkins University and the University of California, Davis.

Parlange is recognized internationally for his expertise in environmental fluid mechanics. His wide-ranging research in hydrology and climate change addresses a number of important issues, such as heat transfer in cities, energy dynamics in hurricanes, and water resource challenges in remote communities, particularly in West Africa. He has a master of science degree and Ph.D. from Cornell University and a bachelor of science degree from Griffith University in Australia.

The University of Rhode Island Board of Trustees formed a Presidential Search Committee last fall, and met throughout the winter to review applications and interview candidates. A Search Advisory Committee was also created last fall and community forums were held that helped to create the Presidential Profile, which outlined expectations, priority opportunities and challenges the next president should be prepared to address. Parlange was selected from more than 200 applicants seeking to serve as the next president of the University.

The presidential search was built on four guiding principles that Dr. Parlange exemplifies," said Thomas M. Ryan, chair of the Presidential Search Committee and member of the Board of Trustees. "He is an accomplished, visionary leader who has focused on student success and experience. During his career, he has advanced global scholarly research, navigated financial challenges, built strong industry partnerships and developed a depth of experience in creating more diverse and inclusive communities, especially for the most

*continued on page 4*

## **Table of Contents**

<i>URI President</i>	<i>p. 1</i>
<i>Mural</i>	<i>p. 3</i>
<i>Word Search</i>	<i>p. 5</i>
<i>Golf Tournament</i>	<i>p. 6</i>
<i>URI Police Chief</i>	<i>p. 7</i>
<i>New Invasive Species</i>	<i>p. 8</i>
<i>Comings &amp; Goings</i>	<i>p.10</i>
<i>Cook's Corner Recipe</i>	<i>p.11</i>
<i>Word Search Winner</i>	<i>p.11</i>
<i>Day of Giving</i>	<i>back cover</i>

# URI Provides Updates on Memorial Union Murals

*Leadership votes to preserve murals, add new art to depict university life today*

*by Dave Lavallee*

The University's Senior Leadership Team has decided to uncover and preserve the 1950s-era murals in the lower level of the Memorial Union, add language to provide context and information about the artist and the era during which the murals were painted and commission new art that would depict University life today.

Last summer, the University decided to cover the murals to protect them while discussions were held with the campus community and alumni about the future of the murals in the context of major renovations to the Memorial Union. They were painted by Dr. Arthur Sherman, URI class of 1950. The murals are whimsical cartoons that show students returning to the area at the Kingston (railroad) Station, a class reunion, URI commencement, a South County beach scene, students piled in a jalopy wearing letter sweaters and a marching band.

The University's Senior Leadership Team reviewed the Advisory Committee's recommendations and voted unanimously to accept all of them. Next steps will involve fundraising to accomplish the recommendations, including the cleaning and preservation of the existing murals. A new mural will be done as part of the major Memorial Union renovations slated to begin in 2022.

The University's Senior Leadership Team's recent action follows about six months of work by the eight-member Memorial Union Advisory Committee. Among the committee's recommendations approved by the University leadership team are:

- Existing murals should be uncovered for public display and best efforts should be made to preserve the murals during any future building upgrade.

- Adjacent to the murals, the University should add necessary context about the artist's contributions/services to the country, University and community.

- Adjacent to the murals, the University should add necessary context regarding the original intent of the murals to depict life on campus at the time they were created.

- The University should commission a new work of art to depict diverse university life as it is today, to be installed in the Memorial Union in similar size and impact to the existing murals.

URI's Senior Leadership Team thanked the committee for its dedicated work on the issue, including its successful strategy to receive public input and consider the multi-disciplinary perspectives of the committee members, gather opinions from current students, alumni and

*continued on page 6*



*Campus Life mural, Memorial Union, painted by Dr. Arthur Sherman, URI class of 1950. photo by Nora Lewis*

**President**...continued from page 2

historically marginalized members of our society. Dr. Parlange's leadership will accelerate the University's already impressive trajectory. We found a champion for all faculty, staff, and students, a president who can lead the University toward another transformational decade.

"We were fortunate to have a wide and deep pool of extraordinary candidates, which is a credit to the leadership and vision that have transformed URI during the past 12 years and the incredible dedication and bold agenda of President David M. Dooley, and our faculty and staff," Ryan said.

The search committee voted unanimously to recommend Parlange as the top candidate at its April 1 meeting. The recommendation to the full Board of Trustees was also voted on unanimously to appoint Parlange as URI's next president at its Monday, April 12, meeting.

"We thank the University community for its input, advice and counsel during this search process," said Margo Cook, chair of the Board of Trustees. "The selection of a new president is the most important decision we have made as a new board. Ultimately, we sought and found what we enthusiastically believe is the right fit for URI -- a president prepared for these challenging times, with an unwavering commitment to diversity and inclusion and, importantly, someone who shares the University's global vision."

"I am honored and delighted for this opportunity to lead the University of Rhode Island," Parlange said. "My life and career have taken me around the world, and to be coming full circle here, back to Rhode Island where I was born, is especially meaningful for me. I have great appreciation for the transformational work President David Dooley has achieved, and a real sense of excitement and ambition for the future."

"The University can seize the opportunity to step up and provide leadership in these challenging times. We can stand out as an inclusive institution that creates new ways of learning and teaching, that pioneers innovative interdisciplinary research, and that, through its industry and public partnerships, is a major driver of the Rhode Island economy."

"I am glad to welcome Dr. Parlange back to the Ocean State to serve as the next University of Rhode Island President," said Governor Dan McKee. "Throughout his years of service in higher education around the globe, Dr. Parlange has gained invaluable experience in innovative research, international relations, and inclusive leadership that will serve our state university well. As a new Governor, I look forward to working with Dr. Parlange as the university's new president during this critical time for Rhode Island and our higher education community -- together, there is so much we can accomplish for the next generation of University of Rhode Island students."

"I'm looking forward to joining the community -- cheering for the Rams, attending musical and theater performances, seeing what you create in the maker space, and learning about your life and experiences today at URI and in Rhode Island."

*More about Professor Marc B. Parlange:*

Parlange became a member of the U.S. National Academy of Engineering in 2017, and is a Fellow of the Canadian Academy of Engineering, the American Association for the Advancement of Science, the American Meteorological Society and the American Geophysical Union.

He has received prestigious awards for his academic achievements, including an early career Macelwane Medal from the American Geophysical Union, the Dalton Medal of the European Geosciences Union and university teaching awards at EPFL and UBC. Parlange was awarded the 2020 American Meteorological Society's Hydrologic Sciences Medal.



# The Amazing Spider-Man

by Stan Lee

Y N I L B O G N E E R G  
A G N I W S D R D O O M  
M O N I H R J B B E W M  
K A Y A E A E M N O A L  
R O C T M N A A L S E I  
A S E E O R J V K R E V  
V P S S V Y E K V E L E  
E O T E R R D D C W N D  
N A L A I C I C I O A E  
W X M N R E K R A P T R  
O R E H N A M D N A S A  
R A D I O A C T I V E D

- |                 |                 |                |
|-----------------|-----------------|----------------|
| 1. Ben          | 10. Mask        | 20. Spider Man |
| 2. Daredevil    | 11. May         | 21. Stan Lee   |
| 3. Dr Doom      | 12. NYC         | 22. Swing      |
| 4. Green Goblin | 13. Ock         | 23. Watson     |
| 5. Hero         | 14. Parker      | 24. Web        |
| 6. Jameson      | 15. Peter       | 25. Wolverine  |
| 7. Kraven       | 16. Powers      |                |
| 8. Marvel       | 17. Radioactive |                |
| 9. Mary Jane    | 18. Rhino       |                |

**DIRECTIONS:** The object is to find the 25 hidden words within the grid. Words can be found horizontally, vertically, diagonally, backwards or forwards. Return the completed wordsearch to Shawn Marie Simmons, Provost Office, Green Hall, Room 109. Please include your name, address and e-mail with your entry. A drawing of all correct entries will determine the winner. A URI prize will be given to the winning entry.

The winner will be announced in the next issue of URInformed. Good Luck!

Name \_\_\_\_\_ Dept. \_\_\_\_\_

Campus Address \_\_\_\_\_

Phone Ext. \_\_\_\_\_ E-mail \_\_\_\_\_

**Mural**...continued from page 3

community members through a survey, and gather historical research on the murals and Dr. Sherman.

It also appreciates the patience of the University community, including Dr. Sherman and his family and our alumni members, which allowed the University to conduct a thorough assessment of the issue and to hear the numerous perspectives on Dr. Sherman's work.

The committee began its work in January 2021 to address the 1954 Memorial Union murals created by Dr. Sherman and to make recommendations to the University about their future. Through late winter and spring, the committee met online about a dozen times and worked to establish a process by which historical perspectives, public outreach, and solicitation of various opinions could be accomplished by a late spring deadline.

These meetings included historical and contextual presentations on the murals and on other art works in public situations (both nearby and nationally) that have generated controversy and

the solutions found by other educational and historical institutions to resolve those controversies.

The committee conducted an email survey to gauge public opinion. A little more than 86,000 individuals received the survey, including alumni, students, faculty, and staff. It generated more than 200 responses. The committee also held discussions with the Sherman family, individual alumni, and the Student Senate, among others.

Every effort was made to hear and consider the various (and sometimes very different) reactions to the murals and to correct or clarify any misinformation on the murals or the process through which the committee was working. Considering all the input from these sources and other key examples of controversial or challenging public art works, the committee concluded that this was a unique opportunity to interpret the current murals, to support reflection of today's diverse URI community, and to commission another, new expression of contemporary campus life.



## URI ROTC CRAMER'S SABERS BN SAVE THE DATE



### LTC (R) PAUL F. HELWEG, JR. MEMORIAL GOLF TOURNAMENT

WHEN: SEPTEMBER 10, 2021 @ 12:30 SHOTGUN

WHERE: GREEN VALLEY CC , PORTSMOUTH, RI

COST: REMAINS AT \$125.00 FOR GOLF AND DINNER

AUCTION, PRIZES AND RAFFLES

THERE IS A GIFT OF A COLLARED GOLF SHIRT. EARLY REGISTRATION WILL BE REQUIRED TO OBTAIN SIZES AND ORDER FOR TIMELY DELIVERY. DETAILS WILL BE PROVIDED ON REGISTRATION FORM

REGISTRATION INFORMATION SOON TO FOLLOW

PROCEEDS TO SUPPORT ROTC



# URI Names Police Major Michael Jagoda New Director of Public Safety and Chief of Police

by Dave Lavallee

The University of Rhode Island has named University Police Maj. Michael A. Jagoda director of public safety and chief of police effective June 19.

In his new role, Jagoda will oversee the following units and offices: Alarm Division, Emergency Management, Environmental Health and Safety, Fire and Life Safety, Transportation and Parking, University Police, Campus Security and Communications and Technology.

“The University’s new director of public safety and chief of police has been URI’s police major for the last six years and is a distinguished law enforcement and public safety professional,” Rider said. “Mike’s expertise, compassion, sense of humor, values, and eagerness to work with all groups across the campus will continue to serve us well as he takes on this more expansive and critical position.

“In his interviews, Mike talked about the need to change the warrior mentality in law enforcement to a guardian mindset. He not only emphasized a personal approach to policing at URI, he essentially put ‘community’ at the center of community policing.”

Jagoda was selected from more than 30 candidates in a national search. He will succeed Stephen N. Baker who will retire from the position of director of public safety/police chief June 18 after 16 years of dedicated service at URI.

In his role as major at URI, Jagoda has provided strategic and operational oversight to 32 sworn police officers, 17 security personnel and six emergency dispatchers; served as the second in command for the police; and supported URI’s commitment to diversity, equity and inclusion with programs and initiatives focused on community policing in partnership with faculty, staff and local community residents. He has worked with local, state and federal law enforcement in matters relating to homeland security, major criminal investigations and cybercrimes.

“I am honored to have been chosen for a position that is central to our entire campus community’s safety, well-being and security,” Jagoda said. “As a URI graduate, I am proud of my alma mater’s growth and its global reputation for excellence. I will work closely with students,



**Chief Michael A. Jagoda** photo by Michael Salerno

faculty and staff to ensure that all public safety units continue to work to ensure that URI is a welcoming and exciting place where everyone feels at home. I have greatly enjoyed my time as police major, and I want to thank retiring Chief Baker and all of our university police officers for helping to build a police department of which we can all be proud. I am ready for all of the great opportunities that await me in my new role.”

Prior to joining URI, Jagoda served in the Connecticut State Police from September 1993 through April 2015, most recently as commanding officer of Troop G, Bridgeport Operations, during which he managed 102 sworn law enforcement and civilian personnel and oversaw police services for 21 towns. He was the commander in charge of the Connecticut State Police command post during the mass shootings at the Sandy Hook Elementary School in Newtown in 2012. For his service, Jagoda was awarded the Sandy Hook Elementary School Meritorious Commendation. He received Connecticut’s TOP COP award in 2001.

continued on page 10

## Attention URI Employees: Be on the Lookout for a Potential New Invader!

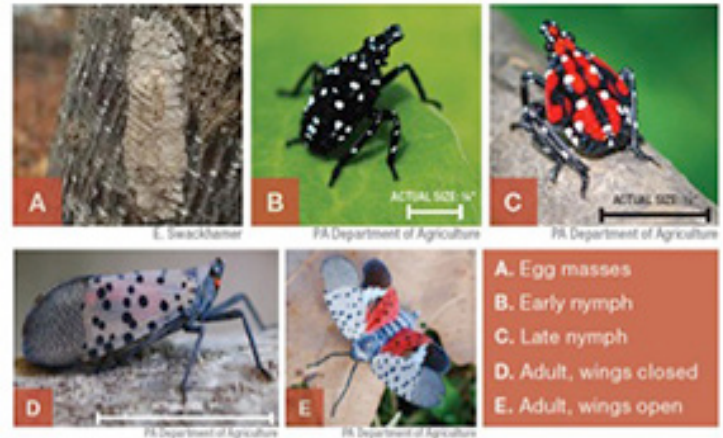
by Alana Russell

There is a new invasive insect from Asia that may be coming to Rhode Island soon. The spotted lanternfly (SLF, *Lycorma delicatula*) is a sap-feeding planthopper that was first detected in Pennsylvania in 2014. Currently, SLF has been reported in Connecticut, New York, New Jersey, Delaware, Pennsylvania Maryland, Virginia, West Virginia, and Ohio. Although there are no known populations of SLF in RI now, this insect was just found in Connecticut in 2020, so an introduction to RI is likely within the next one to two years. We need the URI community to be on the lookout for this potential new invader!

Spotted lanternflies feed on a broad host range of over 70 different plant species, including economically important plants like grapevines, hops, hardwoods, and ornamentals. While direct feeding may not kill healthy plants, it can significantly damage host plants, especially when present in combination with other stressors (such as disease or drought). However, it's still possible for SLF to cause significant damage to plants following high infestation levels or multiple years of sustained feeding, especially on preferred hosts such as grapevines. Currently, grape growers in heavily infested areas are experiencing significant economic loss caused by SLF feeding. Yield loss of up to 80-90%, reduction in cold hardiness of vines, and direct vine mortality have been reported.

Even if you're not a farmer, there is reason to be concerned about SLF. Populations of this insect can build to high numbers, and swarms of these insects are a real nuisance. Although SLF does not bite or sting humans, a byproduct of their feeding (called honeydew) attracts bees, wasps, ants and other insects. Furthermore, SLF spreads easily and rapidly by "hitch-hiking" on vehicles or on infested equipment, materials, and commodities. Time-consuming checks are required for residents and businesses to ensure they are not transporting any insects to new areas.

Early detection is key to an effective response to SLF in Rhode Island. Help us by learning how to identify SLF and understand which life stages are present seasonally. Be on the lookout for



Spotted lanternfly life stages. Photo credits: PA Department of Agriculture and Penn State Extension

SLF on preferred hosts such as tree-of-heaven, grapevines, black walnut and maples. In late July, late-stage nymphs and new adults will be present where there are populations. Adults can spread rapidly, by flying short distances or hitch-hiking long distances.

If you suspect you found SLF, take a photo and collect the specimen in a plastic container if possible, and use the RIDEM Spotted lanternfly Report Form <<https://ridem.wufoo.com/forms/spotted-lanternfly-sighting-report-form/>> to report the find. You can also email photos to the URI Biocontrol Lab at [lisat@uri.edu](mailto:lisat@uri.edu) or drop specimens off at the Biocontrol Lab on the Kingston Campus. If you are interested in learning more on the identification, biology, risk, and management of SLF, we encourage you to watch the February 2021 SLF webinar presented by URI and RIDEM at: <https://www.youtube.com/watch?v=aFZ8vrLTUMA>

Alana Russell is a Research Assistant at the URI Biocontrol Lab.





# Personnel Script

## Job Opportunities

The classified and non-classified application process is now automated so that you can apply on-line for positions here at the University. You will also be able to review the status of your application during the recruitment process, update your on-line application, and apply for positions that become available in the future. For the job opportunities visit:

<https://jobs.uri.edu>

## We Welcome the Following People to our Community...

Stephanie Anderson (GSO Research); Michael Anzalone (Graduate School); Nathan Archer (CLS Academic Unit 2); Marie Berry (Nursing Instruction); Alyssa Boss (General Counsel); Todd Bozeman (Men's Basketball); Leslie Brazil (Purchasing); Scott Campbell (GSO Marine Office); Ryan Chapman (Kinesiology); Izabela Ciesielska-Wrobel (Textiles, Fashion Merch & Design); Jessica Cless (Hum Development & Family Studies); Abigail Ernest-Beck (GSO Research); Nancy Gronstrom (Dean Nursing); Pamela Hallagan (Risk Control and Insurance); Peter Harrington (General Counsel); Ammina Kothari (Harrington School); Mahtab Kouhizadeh (Business Instruction); George Lamere Jr. (Kingston Library); Perri Leviss (Political Science); Ellen McGough (Physical Therapy); Tracy Miller (Theatre); Lorenzo Mosca (Chemistry); Brian Plouffe (CELS Academic Unit 3); Kristen Pohl-Munro (CELS Academic Unit 1: Christin Readey (Public Safety Administration); Aimee Salazar Martinez (ASF CCE Child Development Ctr); Karen Sweeting (Political Science); Christopher Thawley (CELS Academic Unit 3); William Thurley (Office of Capital Projects); Robyn Wojack (Nursing Instruction); Todd Young (HRL Facilities)

## ... and Say Goodbye to ...

Edward Deleiter (Printing Services); Angela Fry (HRL Facilities); Joshua Disaia (Athletics' Maintenance & Repair); Kristina Perrelli (Univ for Academic Success); Lynn LeValley (Communications & Marketing); Kelly Mahoney (External Relations and Comm); Natalie Sorrentino

(Dining Café Operations); Melissa Koskela (Health Services); Michael Scaramozza (Dining Board Operations); Kristin Maestri (Nursing Instruction); Alyssa Knapp (Kinesiology); Leah Dorfan (Kinesiology); Carla Andronowitz (Kingston Child Development); Max Ponticelli (Theatre); Scott McKay (HRL Facilities); Adam Roth (Communication Studies); Robin Free-land (Ocean Engineering); Shaun Holt (Communications & Marketing); Victoria Pierson (HRL Facilities); Michael David (Criminology & Criminal Justice); Kimberly Page (Business Instruction); Richard Johnson (Athletics' Strength Position); Diane Goldsmith (Hum Development & Family Studies); Joshua Croce (Dining Board Operations); Katherine Fernandez (Special Program for Talent Development); Jomaa Katrin (Political Science); Anwar Markup (CELS Academic Unit 2); Deborah Sheely (Dean Environment & Life Science); Nyla Husain (GSO Research); Nicole Baker (Psychology); Edward Huttenhower (Small Business Development Ctr); Jessica Nava (CELS Academic Unit 3); Eric Peterson (Mathematics); Bin Li (Elec, Computer & Bio Engr); Xiaozhen Wang (Elec, Computer & Bio Engr); Marc Baglini (Dining Board Operations); Anthony Brito (Police); Amana Rolle (Criminology & Criminal Justice); David Perez Garza (Dining Café Operations); Maxwell Davis (Dining Board Operations); Renee Malenfant (Dining Café Operations); John Carroll Men's Basketball); Lianca Carlesi (Languages); Louis Fosu (Political Science); Tatsushi Fukunaga (Languages); Tianqi Wang (Biomedical & Pharmaceutical Sci); Victoria Chavez (Computer Science); Megan Martin (Health Services); Stacy Carrasco (Graduate School); Kelly Verte (Sponsored & Cost Accounting); Cecilia Deschenes (Business Instruction); Michael Knapp (Custodial Services); Jason Oliveira (Dining Board Operations); Megan Ewing (Languages); John Lia (Health Services); Seckin Ozkul (Business Instruction); Deb Ogni (Nutrition & Food Services)

## ... and Best Wishes To Those Who Retired

Martin Bide (Textiles, Fashion Merch & Design); Robert LaForge (Psychology); Donna Meyer (Mech., Ind. & Sys. Engineering); Debra Ann Erickson-Owens (Nursing Instruction); James

*continued on page 10*

**Personnel**...continued from page 10

Vincent Jr. (Elec, Computer & Bio Engr.); Deborah Mongeau (Kingston Library); Pamela Thompson (General Accounting); Joseph Cierchia (Shepard's Security); Bethany Fay (Textiles, Fashion Merch & Design); Charles Collins (Maintenance & Repair); Joyce Downey (GSO Pell Library); Janice Hulme (Physical Therapy); Sandra Sheldon (Kingston Library); Cynthia Carr (Health Services); Michael Suriani (Fire Life Safety); Robert Dennis (Maintenance & Repair); Gil Gendron (Dean Heath Services); Ginette Ferszt (Nursing Instruction); Louis Pappadia Jr. (Bookstore); Peter Blanpeid (Physical Therapy); Carole Miller (Economics); Ronald Onorato (Art); Edith Fester (HRL Facilities); Karen Wishner (GSO Faculty); Mercedes Rivero-Hudec (Chemical Engineering); John Burkett (Economics); Robert Baskins (Maintenance & Repair); Jerome Adams (Hum Development & Family Studies); Donna Schwartz Barcott (Nursing Instruction); Timothy George (History); Stephen Baker (Public Safety Administration); Lilla Samson (Art); Barbara Van Sciver (CELS Academic Unit 3); Charles Fenner, Jr. (Maintenance & Repair); Christopher Pargellis (CELS Academic Unit 3).

**In Memoriam**

- ❖ Robinson 'Bob' Hindle Jr., Professor Emeritus, Plant Sciences and Entomology
- ❖ Robert "Bob" MacDonald, Senior Information Technologist, Nursing
- ❖ Cheryl McCarthy, Professor Emerita, University Library
- ❖ Spencer Martin, Professor Emeritus, Accounting
- ❖ Richard Millar, Associate Professor, former Chair, Animal and Veterinary
- ❖ Theresa Pelletier, retired, Dining Services

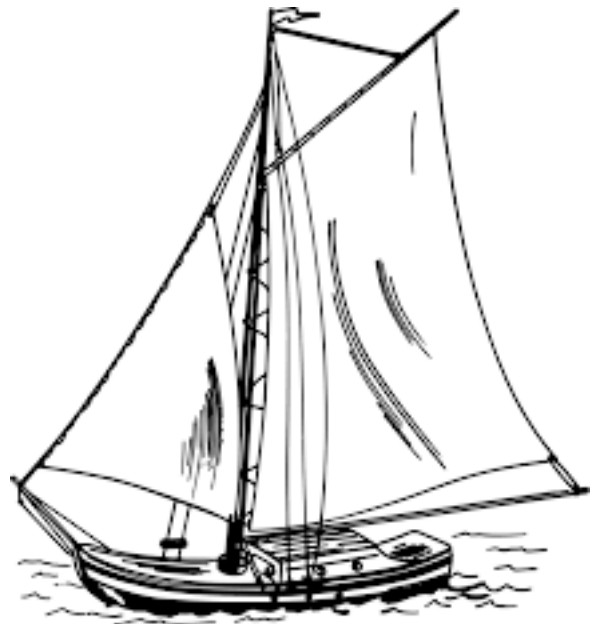


**Jagoda**...continued from page 7

He has management experience in all aspects of public safety, including development of Connecticut's pandemic emergency plan, as well as other emergency and continuity of operations plans, supervision of cause and origin investigations of all fatal fires and arson, responsibility for fire code compliance, field inspections, public education statewide, and formal training in the National Incident Command System, which is mandated under the Federal Emergency Management Agency.

*Jagoda has a master's degree in public administration from Post University and a bachelor's degree in consumer affairs from the University of Rhode Island. He is a member of the FBI National Academy and served on Gov. Gina Raimondo's Working Group for Gun Safety in 2018 and 2019.*

**URInformed is now on the Web**  
at  
<http://web.uri.edu/urinformed/>  
Browse the current issue of  
**URInformed**



# Cook's Corner

Share your favorite recipes in the Cook's Corner

## BLT Salad with Basil Mayo Dressing

### Ingredients:

- 1/2 pound bacon
- 1/2 cup mayonnaise
- 2 Tablespoons red wine vinegar
- 1/4 cup finely chopped fresh basil
- 4 medium slices French bread, cut into 1/2 inch pieces \*\*
- 1 teaspoon salt
- 1 teaspoon freshly ground black pepper
- 1 Tablespoon canola oil
- 1 pound romaine lettuce - rinsed, drained, and torn into bite-size pieces
- 1 pint cherry or grape tomatoes, halved

### Directions:

1). Place bacon in a large, deep skillet. Cook over medium-high heat until evenly brown. Drain, crumble\* and set aside, reserving 2 Tablespoons of the drippings.

2). In a small bowl, whisk together the reserved bacon drippings, mayonnaise, vinegar and basil and let dressing stand, covered, at room temperature.

3). In the same skillet over medium heat (there shouldn't be much bacon grease left), toss the bread pieces with the salt and pepper. Drizzle with the oil, continue tossing and cook over medium-low heat until golden brown.

4). In a large bowl mix together the romaine, tomatoes, bacon and croutons. Pour the dressing over the salad and toss well.

*Tip: Serve with sourdough bread.*



## Pets Corner Invitation

### What are your pets doing during COVID?

Send us your favorite photo of you and your pet.

We need a high resolution jpg.

Your name and department.

Your pet's name, breed

One or two sentences about your pet. Maybe the photo will tell us all we need to know.

Contact:

Nancy Gillespie  
ngillespie@uri.edu



## URInformed Word Search Winner

Congratulations to **Abigail Bernier** from **Environmental Health & Safety!** Please contact Shawn Simmons in the Provost's Office (4-4410) to claim your prize.

**Check out the Word Search on page 5!**

**URInformed**

*The URI Employees' Newsletter*  
73 Upper College Road, Kingston Campus



**SAVE THE DATE**



**URI**  
**DAY OF GIVING**  
**10.07.21**

Every gift supports URI students.  
Last year 2,600+ people contributed \$1,194,293.  
**Join us 10.7.21.**

[urifae.org/urigives](http://urifae.org/urigives) | [#WeAreURI](https://twitter.com/WeAreURI)