

## Minutes of the April 20, 2019 Meeting of the CELS Executive Council

**Call to Order:** A meeting of the College of the Environment and Life Sciences Executive Council was held at 2:30 pm at the CBLS 435 conference room. Members present were Department Chairs Dalton, Gomez-Chiarri, Gold, Mitkowski, Preisser, Savage, Sun and Uchida; Associate Deans, Sheely, Thornber and Veeger; *ex-officio* members Palmer, Silvia and Wilson; and Faculty Secretary Rice. Dean Kirby presided.

**Approval of the Minutes:** *A motion was made by Gomez-Chiarri and seconded by Preisser to approve the March 21, 2019 Minutes of the Executive Council. The minutes were approved unanimously.*

### Announcements:

#### **Dean Kirby:**

- 1) The “May Breakfast” meeting of department chairs hosted by the Provost’s Office is scheduled for May 1 from 8:30-10am
- 2) The Graduate Student Union (GAU) elections are to be held April 19 to determine if grad students will be represented by the URI-AAUP or the RI-NEA or not represented at all. All are asked to respect the rules and requirements of the election.
- 3) The CELS Commencement is scheduled for May 18 at 3pm in the Ryan Center. The ceremony is expected to last 1.5 hours.
- 4) Faculty and students are urged to attend the University-wide graduation scheduled for 12:30pm on the Quadrangle. Patrick Kennedy will be the keynote speaker.
- 5) Data on URI and CELS Fall enrollments are coming in. It looks like a slightly larger class of entering freshmen this year. Data are presented in Appendix 1.
- 6) There has been a report on email and threat protection handled by URI servers covering a period from 1/14/19 to 3/31/19. During that time period there were 53.6 million inbound email messages and after threat protection processing, there were 10.5 million emails delivered. Details are presented in Appendix 2.
- 7) Stats for University-wide publications were searched and there appears to be a considerable increment in publication output in the last 10 years. Data are presented in Appendix 3.
- 8) Statistics on CELS faculty workload were released. See Appendix 4 for the data.
- 9) The calls for offering of more grand challenge courses seems to have subsided. Dean Kirby thanked and congratulated faculty members who stepped up to the plate in General Education course delivery.

#### **Associate Dean Veeger:**

- 1) On June 13, The Association of Public and Land Grant Universities (APLU) will be holding a workshop on teaching. CELS Faculty are encouraged to attend, and the CELS Dean’s office will fund travel for interested faculty...travel by CELS van. Interested faculty should contact Associate Dean Veeger. Information about the program can be found at <http://cag.uconn.edu/events/teaching-workshop/>
- 2) A reminder to all instructors. From now on all course syllabi should include a list of learning outcomes. This includes courses that have been taught for many years.

- 3) Associate Dean Veeger will be in communication with department chairs about faculty up for review, promotion and tenure during the 2019-20 academic year. Dossiers will be handled through the new on-line system initiated by the Provost's Office.
- 4) Fall registrations are opening soon. Double check all fall schedules to make sure schedules are correct before registration opens.
- 5) Have seniors respond to the feedback request survey about their URI experience; there are prizes they can win. Seniors are traditionally the most non-responsive to the survey, so faculty might mention the survey in their classes.

***Skip Wilson:***

- 1) URI Day of Giving April 25th. Target is 1000 donors in a day for the college. Please spread the word and make a gift that day. There will be featured funds within CELS that can be contributed to. As a challenge, Dean Kirby announced that he will personally contribute to a CELS department or program fund that performs the best by highest number of individual donors to the fund.

***Faculty Secretary Rice:***

- 1) Senators-elect from CELS to the URI Faculty Senate and their term ending date resulting from the election held electronically from April 10-11 are as follows: Jason Kolbe (2022); Laura Meyerson (2022); Michael Rice (2020); and Thomas Sproul (2020).
- 2) The next CELS General Meeting of Faculty and Staff will be held at 9am on May 13 in CBL 100. The Agenda will be sent out a week prior to the meeting. Key agenda items will be: a) CELS merit and longevity awards; b) presentation by **Associate Vice President, Student Affairs and Student Success**, Lori Ciccomascolo on demographics and issues of the current cohorts of students; c) reports of the standing committees; d) proposed amendments and action on bylaws; e) election of CELS committee members for the 2019-20 academic year.

**Old Business:**

There was no Old Business.

**New Business:**

There was no New Business.

**Adjournment:** *It was moved and seconded to adjourn at 3:05 pm*

Respectfully submitted:

Michael A. Rice, Faculty Secretary

## APPENDIX 1 – Admissions Deposits

### Deposits by Residency: 2018 vs 2019: April 17

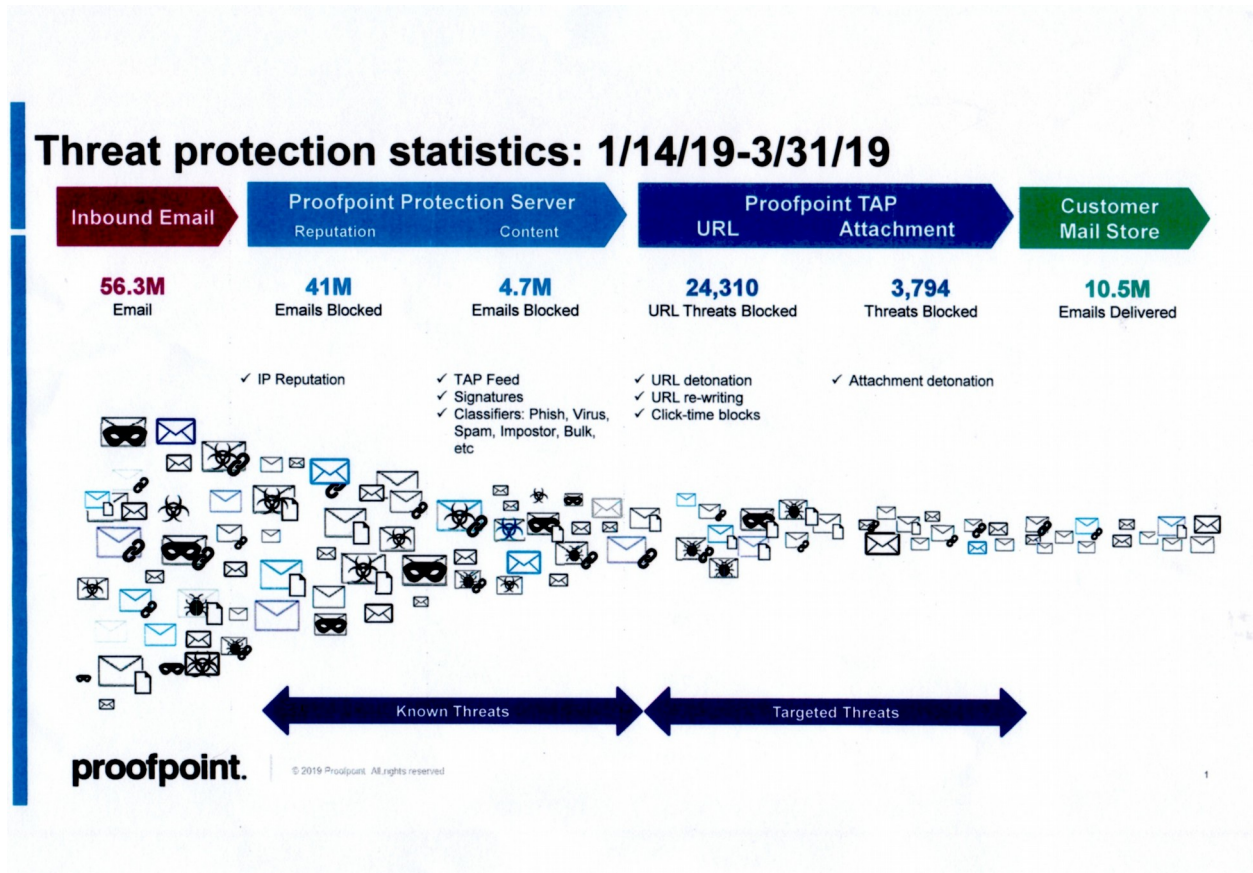
	2018	2019	Delta	
In-State	831	946	115	***
Out-State	891	933	42	
Total	1722	1879	157	

### Comparison by College/Residency: 2018 vs 2019

	2018	2019	Delta
<b>A&amp;S</b>	<b>287</b>	<b>312</b>	<b>25</b>
In-State	146	162	16
Out-State	141	150	9
<b>BUS</b>	<b>280</b>	<b>289</b>	<b>9</b>
In-State	119	138	19
Out-State	161	151	-10
<b>CHS</b>	<b>218</b>	<b>298</b>	<b>80</b>
In-State	110	155	45
Out-State	108	143	35
<b>CELS</b>	<b>199</b>	<b>221</b>	<b>22</b>
In-State	76	99	23
Out-State	123	122	-1
<b>EGR</b>	<b>175</b>	<b>176</b>	<b>1</b>
In-State	91	96	5
Out-State	84	80	-4
<b>CEPS</b>	<b>65</b>	<b>87</b>	<b>22</b>
In-State	30	35	5
Out-State	35	52	17
<b>NUR</b>	<b>145</b>	<b>150</b>	<b>5</b>
In-State	50	59	9
Out-State	95	91	-4
<b>PHAR</b>	<b>114</b>	<b>101</b>	<b>-13</b>
In-State	31	42	11
Out-State	83	59	-24
<b>UCAS</b>	<b>237</b>	<b>245</b>	<b>8</b>
In-State	177	160	-17
Out-State	60	85	25

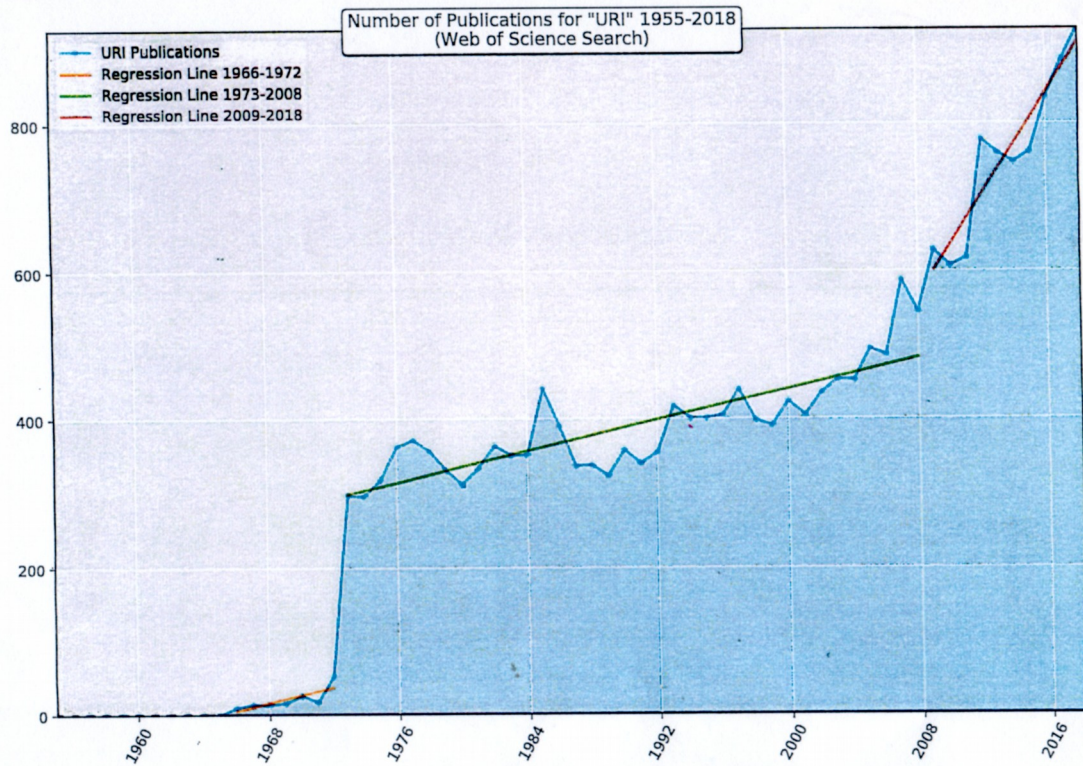
<b>CELS</b>	<b>199</b>	<b>219</b>	<b>20</b>
EL_AFTC_BS	2	2	0
EL_ANSC_BS	39	33	-6
EL_BIO_BA	63	54	-9
EL_BSC_BOS	22	22	0
EL_CLSC_BS	5	6	1
EL_CMBI_BS	10	17	7
EL_CMPM_BS	4	4	0
EL_CMPS_BA	1	1	0
EL_ENRE_BS	2	2	0
EL_EHTM_BS	0	2	2
EL_ESMG_BS	2	11	9
EL_GOCG_BS	0	1	1
EL_MBIO_BS	29	39	10
EL_SAFS_BS	0	1	1
EL_UDEC_BA	1	0	-1
EL_UDEC_BS	6	13	7
EL_WCB_BS	13	13	0

## Appendix 2 – URI Email Threat Protection Statistics





### APPENDIX 3 – URI Publication statistics



## Appendix 4 – CELS Faculty Workload Analysis

### COLLEGE OF THE ENVIRONMENT & LIFE SCIENCES\*

Student/Faculty Ratio Target	ACAD YEAR	FACULTY FTE <sup>3</sup>	CRD HR <sup>1</sup>	CREDIT HR PER FTE	STU:FAC RATIO <sup>2</sup>
CELS	2014-2015	102.4	60,509	591.1	19.7
CELS	2015-2016	98.5	57,523	584.2	19.5
CELS	2016-2017	91.6	53,167	580.6	19.4
CELS	2017-2018	92.6	54,900	593.7	19.8
CELS	2018-2019	97.5	55,757	571.6	19.1
AVG S:F Ratio (Three Years)	AY 2016-AY 2019				19.5
TARGET					17.5

FTE	STU:FAC RATIO <sup>2</sup>
19.5	14.3

\*Effective AY 2017, the University established two new colleges, the College of Education and Professional Studies and the College of Health Sciences. The Nutrition & Food Sciences department moved from CELS to CHS in that process.

### FACULTY FTE, TOTAL CREDIT HOURS, CREDIT HOURS PER FTE FACULTY AND S:F RATIO BY DEPARTMENT

CREDIT HOURS PER FTE FACULTY AND S/F FACULTY BY DEPARTMENT																				Grad Teaching Assistants			
	FACULTY FTE <sup>1</sup>	CREDIT HOURS <sup>1</sup>	CREDIT HR PER FTE	STU:FAC RATIO <sup>2</sup>	Credit Hours Delivered by Instructor Type										Percent Instructor Distribution				Grad Teaching Assistants				
					T-T		Ten Track/Cont	Lect		Cln Chhr/FTE	PTF		GA		Other FTE <sup>4</sup>	Ten Cln	Lect	PTF					
					FTE	Chhr/FTE		Lect	Cln Chhr/FTE		PTF	FTE <sup>3</sup>	GA FTE <sup>3</sup>	Other FTE <sup>3</sup>									
CELS	97.5	55,757	571.6	19.1	49%	353	6%	28%	595	1,281	3%	728	9%	623	5%	234	79%	6%	13%	2%	64.4 sections 32 FTE 5.3 S/F		
BIOLOGY	19.7	18,590	945.4	31.5	21%	292	0%	75	52%	1,946	1%	830	21%	551	4%	686	69%	5%	23%	1%			
CELL & MOLECULAR BIOLOGY	16.0	10,753	672.1	22.4	63%	564	23%	312	0%	0	19%	0	6%	2,301	5%	100	75%	19%	6%	0%			
ENV. NATURAL RESOURCE SCI	7.1	2,461	317.3	10.6	81%	261	0%	0	0%	0	0%	0	0%	0	0%	0	98%	0%	0%	2%			
FISHERIES ANIMAL VET SCIENCE	12.2	8,435	698.9	23.0	69%	646	0%	0	18%	505	1%	378	1%	422	11%	446	74%	0%	22%	2%			
GEOSCIENCES	9.1	4,301	459.9	15.3	24%	143	0%	0	65%	1,368	3%	925	7%	861	1%	219	77%	0%	22%	1%			
MARINE AFFAIRS	9.2	2,491	270.3	9.0	88%	243	0%	0	0%	0	1%	65	0%	0	0%	0	12%	384	98%	0%	2%		
NATURAL RESOURCE SCIENCES	15.1	5,962	393.9	13.1	49%	264	17%	505	18%	1,077	11%	596	1%	929	4%	90	73%	13%	7%	7%			
PLANT SCIENCES	9.1	2,971	327.8	10.9	98%	323	0%	0	0%	0	2%	714	0%	0	0%	0	357	99%	0%	0%	1%		
EVS	0.0	94			0%	0	0%	0	0%	0	0%	0	0%	0	0%	0	100%	378	0%	0%	0%		