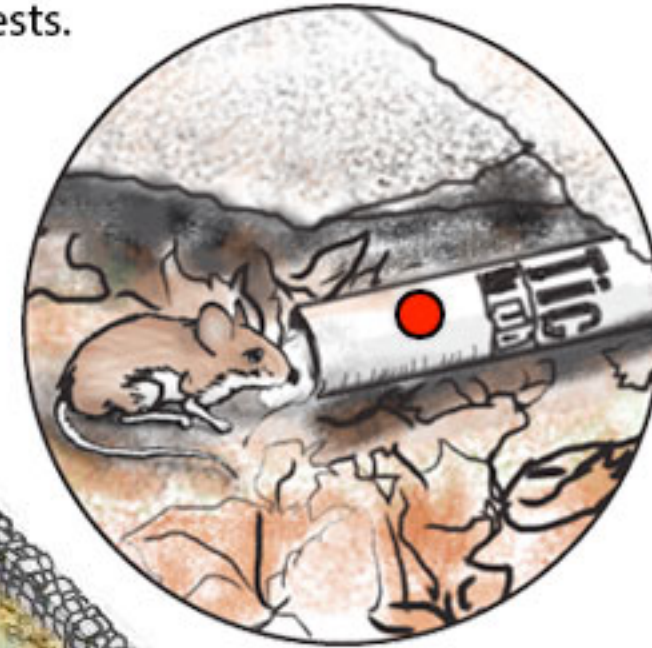


Tick tubes contain tick repellent treated cotton which mice like to use to line their nests.



The Boston Globe | A minuscule foe, a massive public health challenge

By Beth Daley | Globe Staff July 14, 2013

IMAGE CREDIT: David Butler/Globe Staff

SOURCE: TickEncounter Resource Center

○ TickSmart Action!

Bird feeder: Remove or move to a low-traffic area. Seeds attract other wildlife.

Tick tubes contain tick-killing permethrin treated cotton that mice like to steal for their nests.

Overgrown shrubs

Paths

Woodsy areas

Leaf litter

Perimeter

Deer

Ornamental plantings

Stone wall

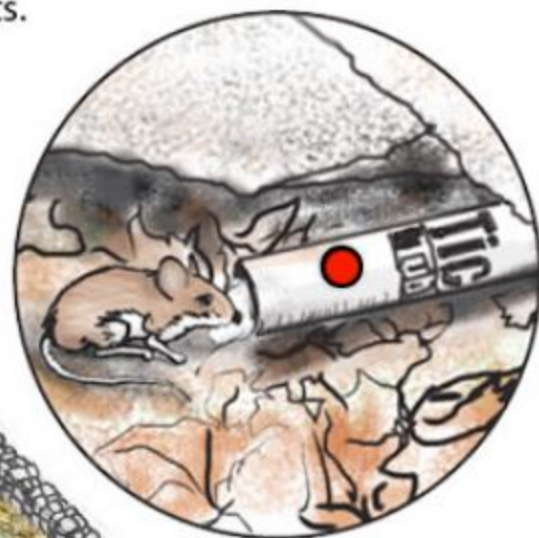
Shed

Pets

Bird feeder

Wood pile

Clothing



TickSmart™ Backyard Breakdown

(Adapted from The Boston Globe | A minuscule foe, a massive public health challenge)

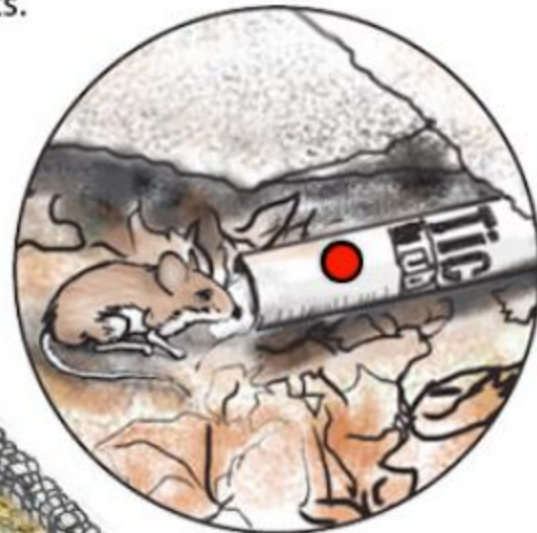
By Beth Daley | Globe Staff July 14, 2013 | IMAGE CREDIT: David Butler/Globe Staff

SOURCE: TickEncounter Resource Center

○ TickSmart Action!

Clothing: Wear shoes, socks and pants/shorts treated with permethrin clothing-only repellent. Tuck in shirt. Do a daily tick check as soon as possible after being in tick habitat.

Tick tubes contain tick-killing permethrin treated cotton that mice like to steal for their nests.



Overgrown shrubs

Paths

Woodsy areas

Leaf litter

Perimeter

Deer

Ornamental plantings

Stone wall

Shed

Pets

Bird feeder

Wood pile

Clothing



TickSmart™ Backyard Breakdown

(Adapted from The Boston Globe | A minuscule foe, a massive public health challenge)

By Beth Daley | Globe Staff July 14, 2013 | IMAGE CREDIT: David Butler/Globe Staff

SOURCE: TickEncounter Resource Center

○ TickSmart Action!

Deer: [Install deer fence](#), use deer repellent, put in plantings that deer do not like.

Tick tubes contain tick-killing permethrin treated cotton that mice like to steal for their nests.

Overgrown shrubs

Paths

Woodsy areas

Leaf litter

Perimeter

Deer

Ornamental plantings

Stone wall

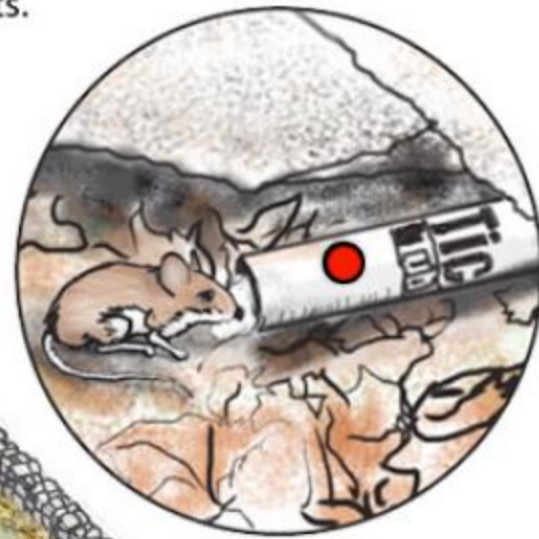
Shed

Pets

Bird feeder

Wood pile

Clothing



TickSmart™ Backyard Breakdown

(Adapted from The Boston Globe | A minuscule foe, a massive public health challenge)

By Beth Daley | Globe Staff July 14, 2013 | IMAGE CREDIT: David Butler/Globe Staff

SOURCE: TickEncounter Resource Center

○ TickSmart Action!

Leaf Litter: Rake & remove leaves.
Leaf litter increases humidity for poppy-seed sized nymph ticks.

Tick tubes contain tick-killing permethrin treated cotton that mice like to steal for their nests.

Overgrown shrubs

Paths

Woody areas

Leaf litter

Perimeter

Deer

Ornamental plantings

Stone wall

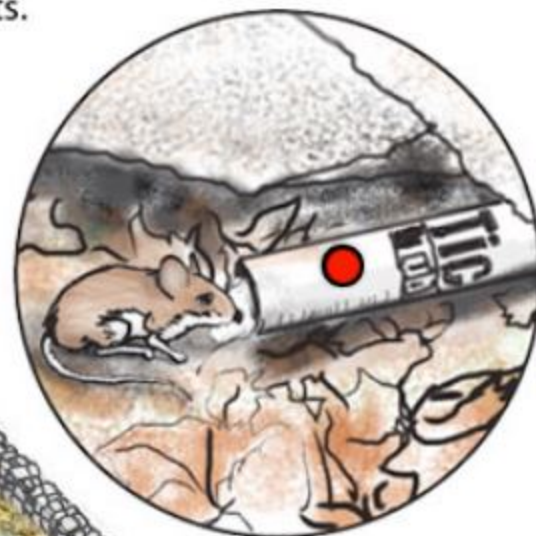
Shed

Pets

Bird feeder

Wood pile

Clothing



TickSmart™ Backyard Breakdown

(Adapted from The Boston Globe | A minuscule foe, a massive public health challenge)

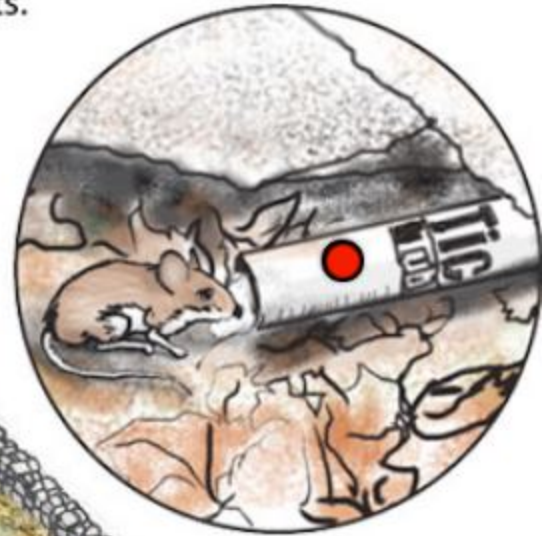
By Beth Daley | Globe Staff July 14, 2013 | IMAGE CREDIT: David Butler/Globe Staff

SOURCE: TickEncounter Resource Center

○ TickSmart Action!

Ornamental Plantings: Edge with wood chip border and include in [perimeter spray](#) or use granules recommended for killing ticks.

Tick tubes contain tick-killing permethrin treated cotton that mice like to steal for their nests.



Overgrown shrubs



Paths



Leaf litter



Perimeter



Deer



Ornamental plantings



Stone wall



Shed



Pets



Bird feeder



Wood pile



Clothing



TickSmart™ Backyard Breakdown

(Adapted from The Boston Globe | A minuscule foe, a massive public health challenge)

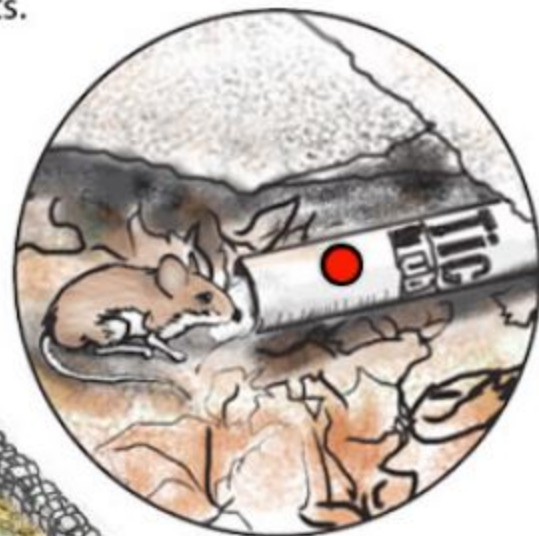
By Beth Daley | Globe Staff July 14, 2013 | IMAGE CREDIT: David Butler/Globe Staff

SOURCE: TickEncounter Resource Center

○ TickSmart Action!

Overgrown Shrubs: [Trim low-hanging branches](#), rake & remove leaf litter and fallen branches

Tick tubes contain tick-killing permethrin treated cotton that mice like to steal for their nests.



Overgrown shrubs



Paths



Leaf litter



Perimeter



Deer



Ornamental plantings



Stone wall



Shed



Pets



Bird feeder



Wood pile



Clothing



TickSmart™ Backyard Breakdown

(Adapted from The Boston Globe | A minuscule foe, a massive public health challenge)

By Beth Daley | Globe Staff July 14, 2013 | IMAGE CREDIT: David Butler/Globe Staff

SOURCE: TickEncounter Resource Center

○ TickSmart Action!

Paths: Trim back brush and tall grass to widen path, then walk in the middle. Also, treat with tick-killing sprays or granules.

Tick tubes contain tick-killing permethrin treated cotton that mice like to steal for their nests.

Overgrown shrubs



Paths



Leaf litter



Perimeter



Deer



Ornamental plantings



Shed



Pets



Bird feeder



Wood pile



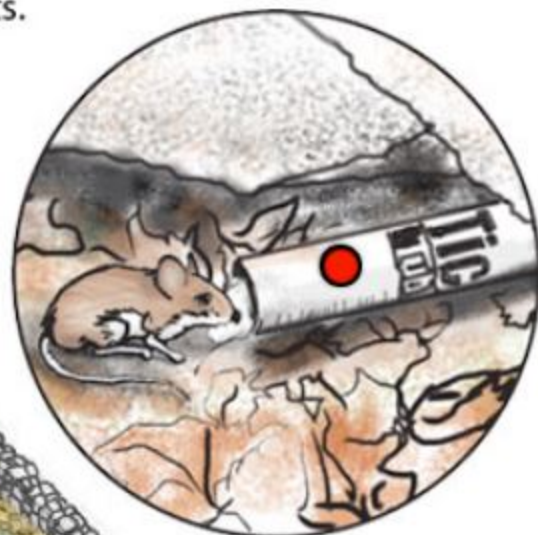
Clothing



Woodsy areas



Stone wall



TickSmart™ Backyard Breakdown

(Adapted from The Boston Globe | A minuscule foe, a massive public health challenge)

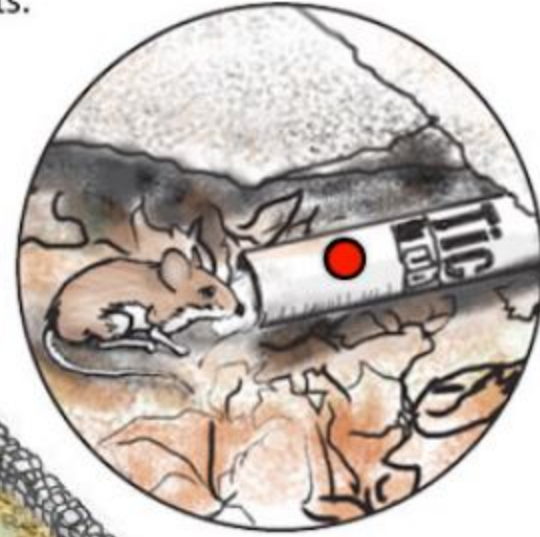
By Beth Daley | Globe Staff July 14, 2013 | IMAGE CREDIT: David Butler/Globe Staff

SOURCE: TickEncounter Resource Center

○ TickSmart Action!

Perimeter: [Perimeter sprays](#) using tick-killing products like bifenthrin work well. Spray 2-3 feet out into the yard and at least 10-15 feet back into the woods.

Tick tubes contain tick-killing permethrin treated cotton that mice like to steal for their nests.



Overgrown shrubs

Paths

Woodsy areas

Leaf litter

Perimeter

Deer

Ornamental plantings

Stone wall

Shed

Pets

Bird feeder

Wood pile

Clothing



TickSmart™ Backyard Breakdown

(Adapted from The Boston Globe | A minuscule foe, a massive public health challenge)

By Beth Daley | Globe Staff July 14, 2013 | IMAGE CREDIT: David Butler/Globe Staff

SOURCE: TickEncounter Resource Center

○ TickSmart Action!

Pets: Protect pets 12 months of the year with [quick tick knockdown products](#). Use [containment](#) (fences, invisible fencing) to create tick safe zones for pets.

Tick tubes contain tick-killing permethrin treated cotton that mice like to steal for their nests.

Overgrown shrubs

Paths

Woodsy areas

Leaf litter

Perimeter

Deer

Ornamental plantings

Stone wall

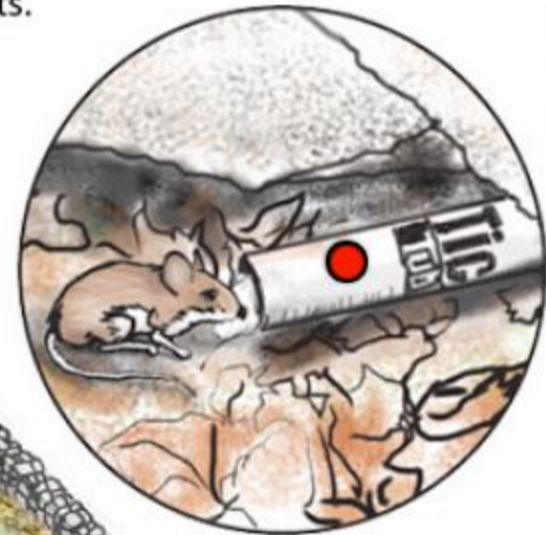
Shed

Pets

Bird feeder

Wood pile

Clothing



TickSmart™ Backyard Breakdown

(Adapted from The Boston Globe | A minuscule foe, a massive public health challenge)

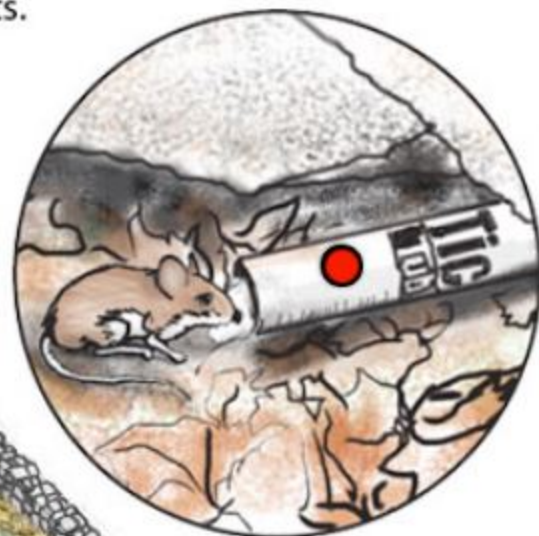
By Beth Daley | Globe Staff July 14, 2013 | IMAGE CREDIT: David Butler/Globe Staff

SOURCE: TickEncounter Resource Center

○ TickSmart Action!

Shed: Trim weeds and tall grass, rake & remove leaves, remove clutter, [apply tick tubes](#) for mice.

Tick tubes contain tick-killing permethrin treated cotton that mice like to steal for their nests.



Overgrown shrubs



Paths



Leaf litter



Perimeter



Shed



Deer



Ornamental plantings



Stone wall



Pets



Bird feeder



Wood pile



Clothing



TickSmart™ Backyard Breakdown

(Adapted from The Boston Globe | A minuscule foe, a massive public health challenge)

By Beth Daley | Globe Staff July 14, 2013 | IMAGE CREDIT: David Butler/Globe Staff

SOURCE: TickEncounter Resource Center

○ TickSmart Action!

Stonewalls: Rake away leaves and [apply tick tubes](#) for mice. Include stone walls in [perimeter spray](#). Mice are the primary culprits for producing infected ticks.

Tick tubes contain tick-killing permethrin treated cotton that mice like to steal for their nests.

Overgrown shrubs

Paths

Woodsy areas

Leaf litter

Perimeter

Deer

Ornamental plantings

Stone wall

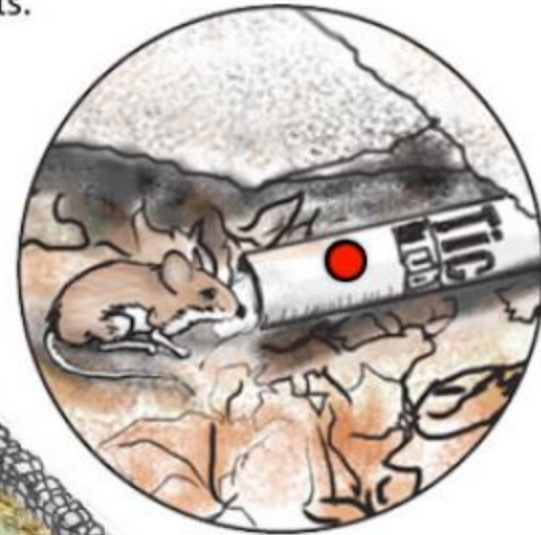
Shed

Pets

Bird feeder

Wood pile

Clothing



TickSmart™ Backyard Breakdown

(Adapted from The Boston Globe | A minuscule foe, a massive public health challenge)

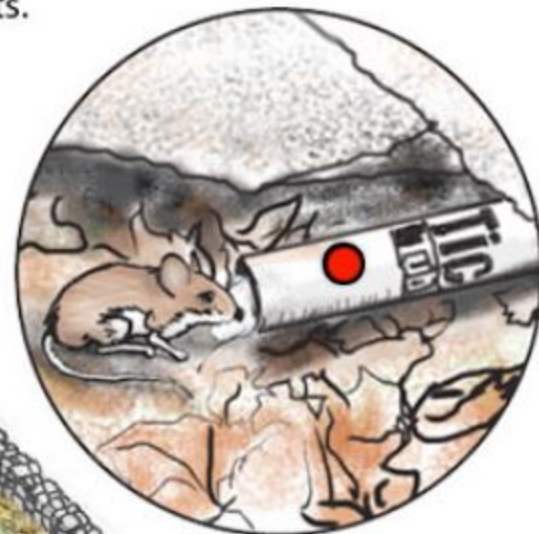
By Beth Daley | Globe Staff July 14, 2013 | IMAGE CREDIT: David Butler/Globe Staff

SOURCE: TickEncounter Resource Center

○ TickSmart Action!

Tick Tubes: [Tick tubes](#) contain tick-killing permethrin-treated cotton that mice like to steal for their nests. It is best to apply Tick Tubes in late July/August when larvae are active and before nymphs emerge.

Tick tubes contain tick-killing permethrin treated cotton that mice like to steal for their nests.



Overgrown shrubs

Paths

Woodsy areas

Leaf litter

Perimeter

Deer

Ornamental plantings

Stone wall

Shed

Pets

Bird feeder

Wood pile

Clothing

TickSmart™ Backyard Breakdown

(Adapted from The Boston Globe | A minuscule foe, a massive public health challenge)

By Beth Daley | Globe Staff July 14, 2013 | IMAGE CREDIT: David Butler/Globe Staff

SOURCE: TickEncounter Resource Center

○ TickSmart Action!

Woodsy areas: Perimeter sprays using tick-killing products like bifenthrin work well. Spray 2-3 feet out into the yard and at least 10-15 feet back into the woods.

Tick tubes contain tick-killing permethrin treated cotton that mice like to steal for their nests.

Overgrown shrubs

Paths

Woodsy areas

Leaf litter

Perimeter

Deer

Ornamental plantings

Stone wall

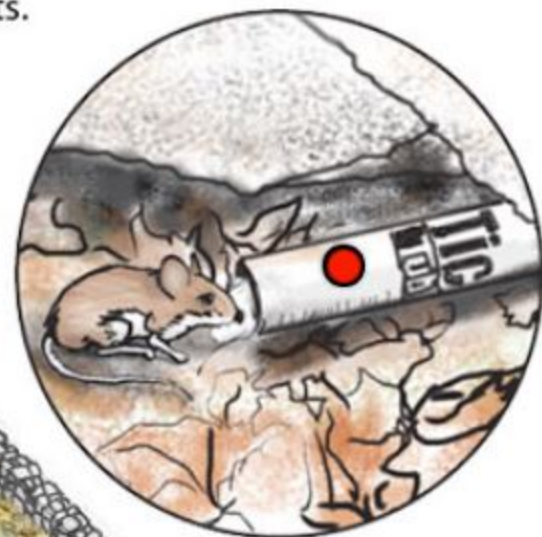
Shed

Pets

Bird feeder

Wood pile

Clothing



TickSmart™ Backyard Breakdown

(Adapted from The Boston Globe | A minuscule foe, a massive public health challenge)

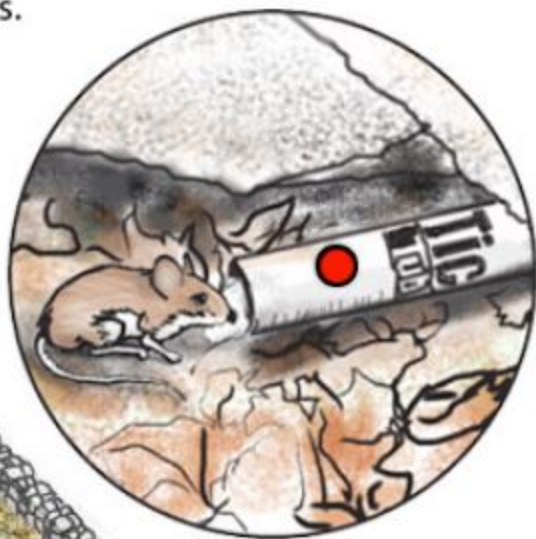
By Beth Daley | Globe Staff July 14, 2013 | IMAGE CREDIT: David Butler/Globe Staff

SOURCE: TickEncounter Resource Center

○ TickSmart Action!

Wood pile: Move to low-traffic area.
Apply [tick tubes](#) for mice.

Tick tubes contain tick-killing permethrin treated cotton that mice like to steal for their nests.



Overgrown shrubs



Paths



Leaf litter



Perimeter



Deer



Ornamental plantings



Stone wall



Shed



Pets



Bird feeder



Wood pile



Clothing



TickSmart™ Backyard Breakdown

(Adapted from The Boston Globe | A minuscule foe, a massive public health challenge)

By Beth Daley | Globe Staff July 14, 2013 | IMAGE CREDIT: David Butler/Globe Staff

SOURCE: TickEncounter Resource Center