



THE
UNIVERSITY
OF RHODE ISLAND
COLLEGE OF
THE ENVIRONMENT
AND LIFE SCIENCES

18 USC 707

4-H Backyard Chicken Series: *Chicken Wellness: How to Have a Healthy Show Season*

Hands Health Head Heart Hands Health

Rhode Island
4-H 

Head Heart Hands

The University of Rhode Island is an equal opportunity employer committed to community, equity, and diversity and to the principles of affirmative action.



WELCOME !

Let's Have a Healthy Show Season!



RI Animal Health Regulations: For Exhibition and Showing Only

- **Animals unfit for fair, show, or exhibitions:** All animals at fairs, shows, or exhibitions must be in proper physical condition and are subject to examination, by federal or state animal health officials, at the exhibition for visual evidence of infections or contagious diseases or any condition that would render it unfit for exhibition.
- **Any animal exhibiting signs, including but not limited to the following, may be refused entry:** diarrhea, vomiting, nasal discharge, ocular discharge, cough, lameness, skin lesions, loss of hair or feathers, external parasites, neurological signs, fever, lethargy, depression, difficult breathing, abscesses or growths, emaciation, or known exposure to animals with infectious or contagious diseases.

Using the Showmanship Exam as a Health Guide

See the UCONN Poultry Showmanship Guide

Removing the Bird from the Cage and Carrying

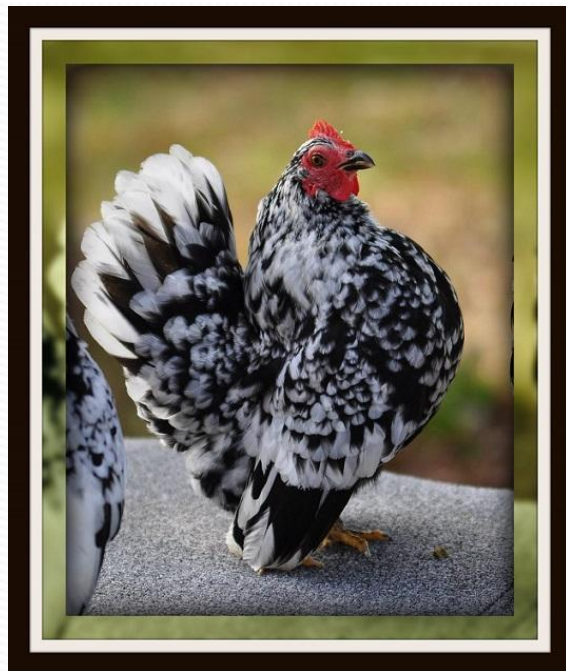
You might notice:

- A change in weight. Weight loss could be a symptom of a disease, improper nutrition or parasites.
- Does your bird act different than normal when you remove it from its cage?



Posing and Walking the Bird

- Is your bird alert?
- Does your bird limp or move in an abnormal way?



Unhealthy Poses



Showing the Head

- Check for clear eyes and nostrils- no mucous discharge
- No lesions or scabs on comb, wattles, eyelids
- No swelling in face



Wings

No broken feathers.



Should this chicken be exhibited at a fair?

Width of Body, Pubic Bones, Depth of Body, Vent, Preening Gland, Under Color



Not Healthy: Lice



B. Mullens, UC Riverside.



Not Healthy: Northern Fowl Mites



Healthy Vent



Unhealthy Vent



Keel Bone

Bone should be straight with no lesions.

Not acceptable:



Feet and Legs

Should have:

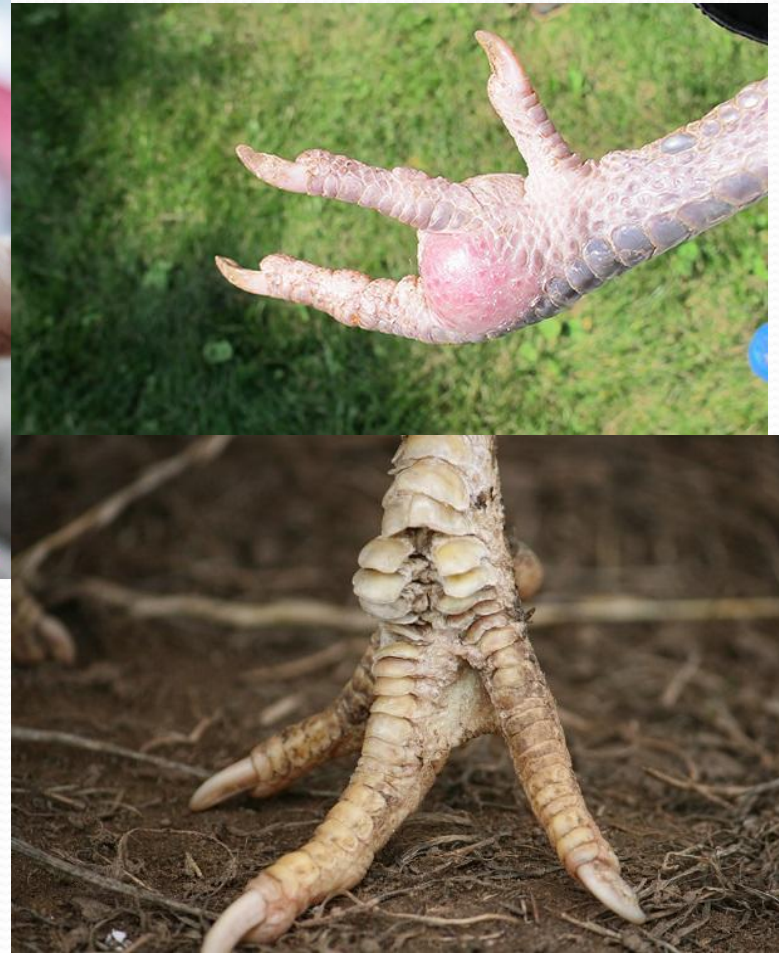
- smooth scales
- Straight legs and toes
- Healthy pads



Unhealthy Feet and Legs



© Egg Carton Labels by A Dozen Girls



Steps to Being Prepared for the Poultry Show

- 1. Be observant of your birds. Know what their normal behaviors are.





©The Chicken Chick

Can you Spot the Normal Behaviors?



Steps to Being Prepared for the Poultry Show (continued)

2. Handle Your birds often. (choose a showmanship bird that fits your size)
 - *Practice the showmanship exam.
 - * Practice proper caging
 - * Practice Posing and walking
3. Keep show Birds Clean.
4. Provide proper feed and water.

Good nutrition + cleanliness = good health

What to Expect When you Get to the Fair

- 1. Keep birds in carriers outside the barn. Let the superintendent know you have arrived. Do not remove birds from carriers until they have been inspected by the fair official.
- 2. Only bring birds into the barn once you have passed inspection. Bring birds directly to the assigned coops.
- 3. Feed and water will be provided, as well as feeders and water dishes.
- 4. The superintendent cares for your birds during the fair. However, help is always appreciated.

What to Expect When you Get to the Fair

(CONTINUED)

5. On Showmanship Day be prepared for a long day.

*The judge will determine the order of age categories when he/she arrives.

* Don't remove your bird from it's coop too far in advance of your turn. Birds tend to become stressed and fidgety.

6. Last day of the Fair, Coop-out: Clean-out bedding from your coops. Wheel barrows and tools will be supplied. Before leaving have the Superintendent inspect your coops and approve you for dismissal.

Bringing your Show Birds Home

- Quarantine
- WashEquipment
- Special Treatment

Thanks For Coming!



Any Questions?

Learn more about 4-H clubs and programs at:

web.uri.edu/4h

401-874-9412

State 4-H Office
Peckham Farm/URI
Kingston, RI 02881

