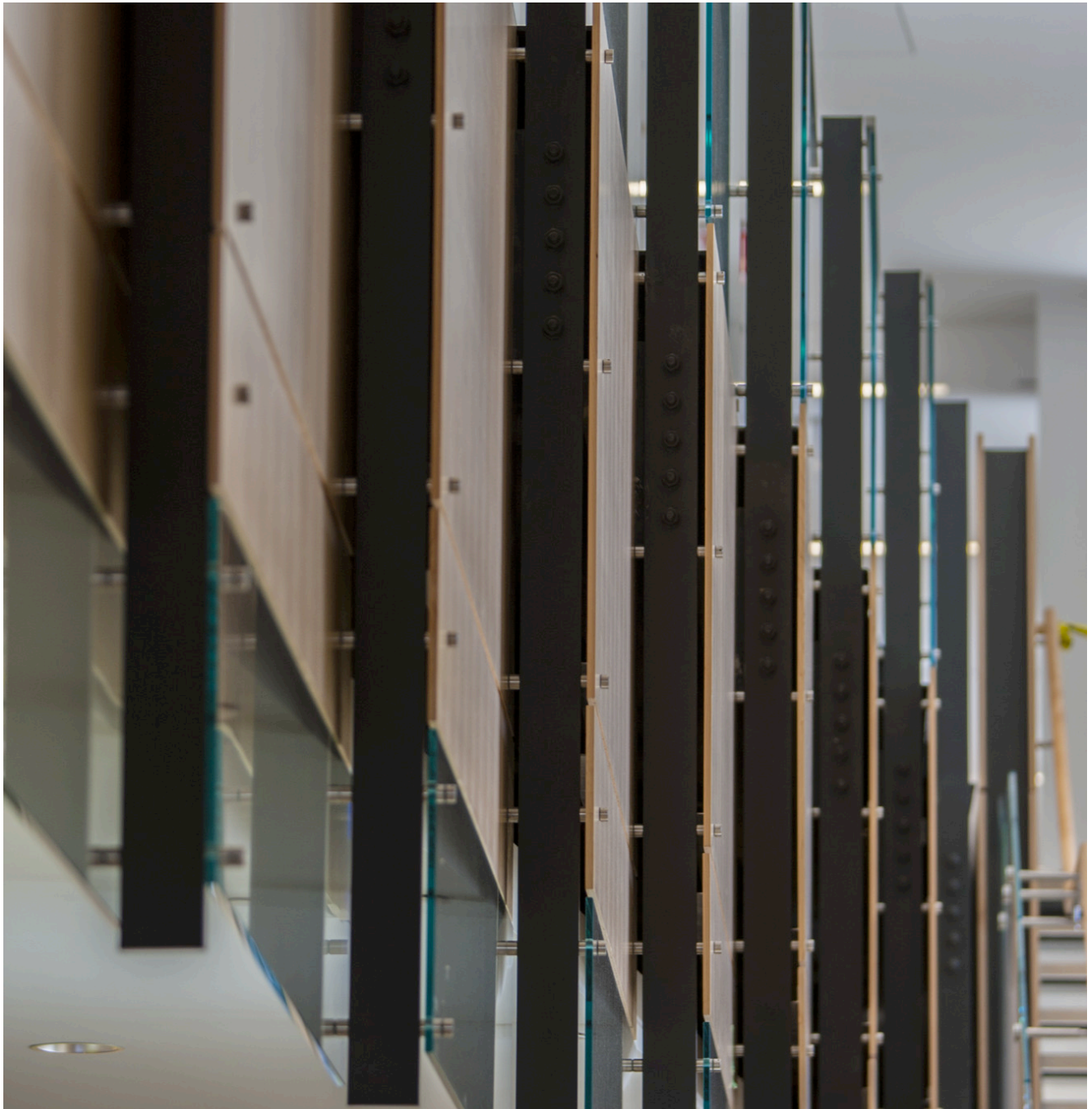


UNIVERSITY OF RHODE ISLAND 7TH ANNUAL ACADEMIC SUMMIT
Friday, January 16, 2015

Higher Education in the 21st Century and Beyond:
Designing URI's Future and Place



PROGRAM

8:00 am Continental Breakfast - Ballroom

8:30 am Summit Opening & Welcome - Ballroom
President David M. Dooley

8:40 am Introductory Context: The Academic Plan Progress 2010-15
Provost Donald H. DeHayes

9:00 am Introductions and Welcome from the Summit Planning Committee
Bryan Dewsbury, Assistant Professor, Biology

Plenary Session: Learning and Scholarship in the Future -
Dr. Kathy Williams, Professor, Ecology and formerly Director of the Center of Teaching and Learning, San Diego State University

10:15 am Break

10:30 am Structuring and Advancing the Contemporary Learning Environment: Strategic Initiatives to Advance Academic Quality and Implement Contemporary Models of Learning in the Future at URI

10:30 am – 11:25 am – Breakout Session I

11:30 am – 12:25 pm – Breakout Session II

Breakout Sessions I and II: *Choose two of the following to attend*

Each of the following breakout discussions is focused on a particular topic relative to advancing and structuring learning in the future. The discussion topics will each be framed and set off with an opening video with a facilitated discussion to follow.

1. Great big ideas for the future of higher education

Room: Ballroom front tables

Facilitator: Bryan Dewsbury & Peter August

- What do you think about a different educational structure or lack of structure in delivery of education for the future? Is this something URI can potentially adopt?
- Is there value in having a very defined and rigid core curriculum based on the liberal arts and sciences? Why or why not?

- Which aspects of less structure appeal to you and which are particularly troubling?

<https://www.youtube.com/watch?v=DZQe73lXZtU>

2. Models and ideas for stimulating critical thinking and innovative learning

Room: 308

Facilitator: Cathy DeCesare

- How practical is this model for different higher education institutions with different missions? If not very, how can it be adaptable to these/our institutions?
- What is the 'new' role of discipline-based university curricula in the new economy? How can courses be designed for students to understand the minutia but also see the big picture?
- How do we decide the 'thinkers'? In other words, might there be a different cadre/type of thinkers more appropriate for our students?

<https://www.youtube.com/watch?v=Orkei-HVwoU>

3. Innovations and new models for course delivery

Room: Senate Chambers, 300

Facilitator: David Byrd

- How could these thoughts be applied to the structure of course delivery at URI?
- How can URI respond to the suggestion of a need for innovation in teaching and innovation in delivery to retain value and sustainability?
- What are some/any potential ideas or principals that URI might consider adopting related to this talk? Ideas you have about expanding on these considerations?

<https://www.youtube.com/watch?v=0reHkyMCbuw>

4. Liberal learning for the future: its relevancy to society

Room: 318

Facilitator: Laura Beauvais

- What are some/any potential ideas or principles that URI might consider adopting related to this talk? Ideas you have about expanding on these concepts?
- How should URI respond to the suggestion that a viable democracy needs a renewed commitment to the liberal arts by removing structures divided by topic, and creating frameworks for action around issues

- Current Academic Plan Goal 2 includes: *preparing students for a changing world*, yet the current academic structure and delivery of learning may not produce adaptable, flexible thinkers, but more experts, zealots and spectators. What needs to change?

http://www.ted.com/talks/liz_coleman_s_call_to_reinvent_liberal_arts_education?language=en

5. Education to advance students as global entrepreneurs

Room: 313

Facilitators: Julie Coiro & Manbir Sodhi

- How could these thoughts be applied to supporting a learner-centered education for URI students to foster creativity and autonomy?
- How might the current academic structure be shifted to produce adaptable, flexible thinkers?
- How can we support and reward innovative teaching which may not produce "scores" in a traditional way?
- What are some/any potential ideas that URI might consider adopting related to this talk? Ideas you have about expanding on these concepts?

<https://www.youtube.com/watch?v=NOXAJzqm2Rw>

6. Reimagining learning beyond just infusing technology: personalizing learning and learning analytics

Room: 301

Facilitator: Josh Caulkins

- What did you hear that could be valuable for the learning environment at URI?
- How might URI re-imagine learning for the future? What would need to change?
- What would faculty need and what support would be necessary to fully integrate digital learning into the classroom?

<http://www.youtube.com/watch?v=Z0uAuonMXrg>

7. Speeding up learning: Potential Application of five key principles

Room: 360

Facilitator: Damon Rarick

- Did any of these principles strike a chord of relevancy for teaching in general and possibly integrating in your teaching in the future?
- What is important about streamlining learning for the future?

- What thoughts come to mind as to what adaptations the University should make in the future to facilitate teaching and learning?

<http://www.youtube.com/watch?v=d0yGdNEWdn0>

8. Transforming learning by creating conditions for students to flourish: considerations for a customized student approach

Room: 354

Facilitators: Elaine Finan

- How could these thoughts be applied to supporting a learner-centered education for URI students to foster creativity and autonomy?
- How could URI support a shift in the narrative for higher education from a linear college experience to an organic process – a creative process which actively involves students in their education to increase its' value.
- What are some/any potential ideas or principles that URI might consider adopting related to this talk? Ideas you have about expanding on these concepts?

http://www.ted.com/talks/sir_ken_robinson_bring_on_the_revolution

11:30 am Breakout Sessions 2
Repeated sessions from Breakout 1: Choose another one from above to attend

12:30 pm Lunch & Conversation - Ballroom

1:30 pm Conversations on Future Academic Plan Initiatives with regard to: Research and Scholarship, Globalization, Diversity and Equity

Breakouts I & II: Choose two; one in each Breakout timeframe:

1:30 pm – 2:25 pm - Breakout Conversations I

2:30 pm – 3: 30 pm -Breakout Conversations II

[Advancing the Future for Research and Scholarship](#)

1. Advancing research, engaging students, and supporting the scholarship of teaching and learning

Exploring ways to involve undergraduates in faculty research and outreach projects. How can faculty be encouraged and supported in the engagement of the scholarship of teaching and learning? What future programs or initiatives would advance

innovation and scholarship? What is the potential future role for partnering with business and government?

Facilitators: Jay Fogleman and Alison Tovar

Room: 308

2. Applications and Implications of Big Data

What does URI need in order to move forward with utilizing big data in the future? Discussion will focus on lessons and applications for the future of digital humanities, business, and government arenas. Issues to consider are the acquisition of resources and encouraging collaboration across the disciplines and the steps to facilitate participation in big data projects.

Presenters: Annu Palukannathu Matthew & Alan Verskin

Facilitators: Joan Peckham & Julia Lovett

Room: 318

[Advancing Globalization at URI](#)

3. Focus on student success and support, both international students coming to URI and URI students going abroad.

How do we encourage and promote domestic students to take advantage of international study (both semester long and shorter term experiences, internships and other coursework) and assess success? How do we encourage international students to come to URI? How do we better support international students on campus in integrating them with domestic students.

Facilitators: Chelsey Hawes & Corey Smith

Room: 301

4. Enhancing development of the curriculum to foster global citizenry and supporting and engaging faculty

How do we support curriculum development in both the general education program and major? (e.g., promote language proficiency and knowledge of world geography) How do we incorporate experiential learning, service learning, and online learning in promoting student global awareness and competency in our curriculum (e.g., J-term, Study Abroad, partnerships, etc.)? What would help to increase faculty support in global education, research, teaching, and outreach (e.g., training, information, credit in faculty evaluations, etc.?)

Facilitators: Kristen Johnson & Nancy Stricklin
Room: 313

Realizing Greater Diversity and Equity in the Future

5. Social belonging, URMs (underrepresented) and nontraditional students

Discussion about the concept of social belonging, which is the sense of place (or lack of) that certain groups feel as they navigate a majority campus. We'll discuss URI's historic and continued attempts to create a climate of inclusivity, and directions into which these attempts should foray into the future.

- What is social belonging and how does it manifest itself at a large state institution?
- What current measures does URI take to address campus cultural climate?
- What future changes do you envision with respect to campus cultural climate given the changing undergraduate demographic?

Facilitators: Bryan Dewsbury
Room: 360

6. Inclusive pedagogy

Inclusive pedagogy (co-agency- responsibility for learning is shared between teacher and learner, everybody- some v/s all learning, and trust-between teacher and learner) is a term that incorporates the considerations that instructors make of diverse classrooms. We'll discuss here the need for inclusive pedagogy, and the steps that URI can take to foster this type of instruction across campus.

- How does diversity affect pedagogy? What do the numbers tell us?
- What strategies can we implement to consider diverse populations in our classrooms?

Facilitators: Patricia Morokoff & Lynne Derbyshire
Room: 300

7. Service learning and outreach

URI's role in fostering equity in the state of Rhode Island. As Rhode Island's flagship public research university, URI can play a central role not only in educating large numbers of students, but in engaging in the wider RI community on issues of equity in education and service. Discussion will focus on URI's historic relationship with statewide efforts and future strategies to improve and enhance these efforts.

7TH ANNUAL ACADEMIC SUMMIT - HIGHER EDUCATION IN THE 21ST CENTURY AND BEYOND: DESIGNING URI'S FUTURE AND PLACE 2016-2021

- What is URI's role in addressing questions of equity in education in RI?
- What is the current level of service-learning in course curricula? Should it be increased?
- Examples of successful projects, what would success look like and what would it cost?

Facilitators: Diane Kern & Shanna Pearson-Merkowitz
Room: 354

2:30 pm *Conversation Breakouts II*
Repeated sessions: *Choose one from above to attend*

3:30 pm *Closing Session: Dessert Reception – Ballroom*
Joelle R. Koster, Vice Chairperson, JCAP

2014 Summit Planning Committee

Laura Beauvais, Vice Provost, Faculty Affairs
David Byrd, Professor, Education
Cathy DeCesare, Lecturer, History
Bryan Dewsbury, Assistant Professor, Biology
Elaine Finan, Assistant Director, SLOAA
Ann Morrissey, Convener Planning Committee, Special Assistant, Academic Planning
Damon Rarick, Associate Professor, Languages
Michael Rice, Professor, FAVS
Devon Swanson, President, Graduate Student Association
Alison Tovar, Assistant Professor, Nutrition and Food Science
Alan Verskin, Assistant Professor, History

Special thanks to Phil Teixeira for technology coordination, Lou Ann Diomanes for logistical assistance, and Brittany Durgin for registration coordination