

AGENT

- Emphasis on virtue of person undertaking action (Aristotle)

ACT

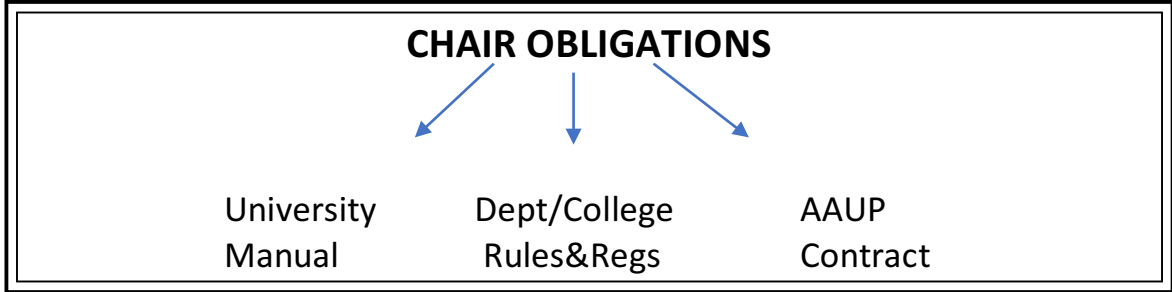
- Emphasis on duty with respect to laws, regulations, manuals, rules, contracts (Kant)

CONSEQUENCE

- Emphasis on implications of actions for broader population (Mill)



Outlier Model:
Care Ethics



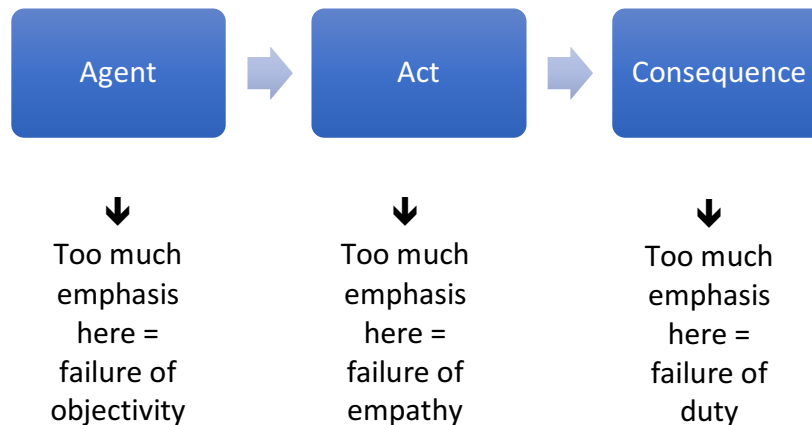
Outlier Model:
Egoism

**PRIMARY CHAIR OBLIGATION:
Due Diligence**



- ALWAYS Read the Manual
- ALWAYS Read the Contract
- **DOUBLECHECK WITH Campus Experts (e.g., HR, AAUP, Research, Seasoned Chairs, Legal)**

Seasoned chairs say: *Don't try to solve ethical challenges in isolation!*



WHEN THE MANUAL AND THE CONTRACT DON'T REALLY COVER YOUR SITUATION?

- Gather the **FACTS**
- Look at the **CONSEQUENCES**
- Discern what you **CAN** and **CANNOT** say, write, or do
- Balance **HARMS** to others with **FAIRNESS** across board
- Resist **SQUEAMISHNESS** about colleague disapproval – remember our duties to those beyond department
- Seek **SUPPORT** of those with experience and expertise (within bounds of confidentiality)
- Balance **TIME** needed to solve with obligation for **TRANSPARENCY** – paternalism is a danger!
- Consider **HARMS** to others vs. **FAIRNESS** across the board...and don't lose sight of the **GOOD YOU CAN DO!**