

# What kind of Insect Have I Found?

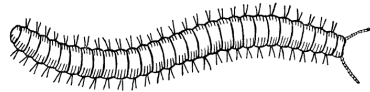
## Worksheet

**1a.** Six legs...Go to #2

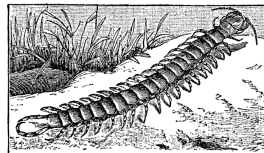
**1b.** Eight legs...Arachnids (Spiders, scorpions, mites, ticks)



**1c.** Ten legs ...Millipedes



**1d.** Lots of legs, four legs per body segment ...Centipedes



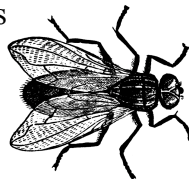
**1e.** Lots of legs, two legs per body segment...Crayfish, crabs, barnacles, shrimp, sowbugs

**2a.** Wings present...Go to #3

**2b.** No wings...Go to #16



**3a.** One pair of wings present...Flies

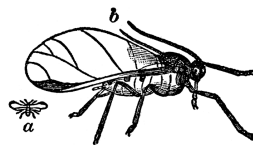


**3b.** Two pairs of wings present...Go to #4

**4a.** Front and back wings different in shape; front wings leathery or clearly hard...Go to #5

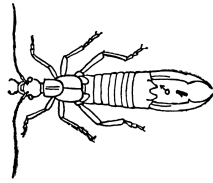
**4b.** Front and back wings the same in shape; not leathery or hard; wings covered with hairs or colored powdery scales...Go to #10

**5a.** Mouth like a straw...True bugs, leafhoppers, aphids, scales



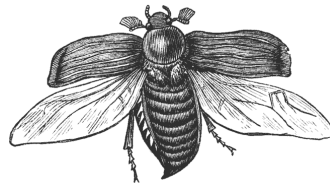
**5b.** Mouth not like a straw, but are a chewing type...Go to #6

**6a.** Pincher-like appendages at tip of abdomen...Earwigs



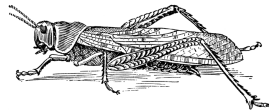
**6b.** No pincher at the tip of abdomen...Go to #7

**7a.** Front wings hard, without veins, and meet in a straight line down the middle of the back.....Beetles



**7b.** Front wings leathery, veined and either overlap or are held roof-like over the body...Go to #8

**8a.** Hind legs large for jumping...Grasshoppers, crickets, katydids, walkingsticks

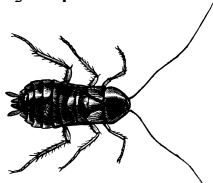


**8b.** Hind legs long and skinny for running...Go to #9

**9a.** Triangle-shaped head; short antennae; front legs held together like hands...Mantids



**9b.** Long antennae, head hidden by a part of the thorax...Cockroaches

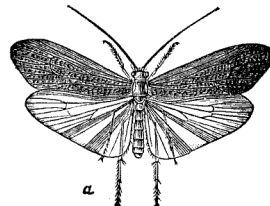


**10a.** Wings completely or partly covered in scales; mouthparts are a coiled tube... Butterflies, moths



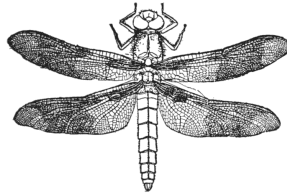
**10b.** Not like 10a...Go to #11

**11a.** The body and wings are covered with hairs... Caddisflies



**11b.**Not like 11a... Got to **#12**

**12a.** Front and hind wings long and similar in length and shape; wings at rest held out to side or above body; abdomen very long and skinny... Dragonflies, damselflies



**12b.**Not like 12a... Got to **#13**

**13a.**Both pairs of wings are the same length and wings are see-through with lines... Termites

**13b.**Not like 13a...Go to **#14**

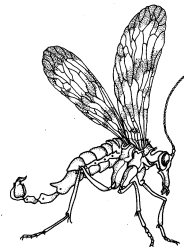


**14a.** Front wings longer and with more lines than back wings; body wide with skinny waist; may have needle-like (sting)...Ants, bees, wasps



**14b.** Front and back wings very similar in size and number of lines; body skinny and no waist; needle-like or saw-like attachment on tip of abdomen may be large and curved up...Go To **#15**

**15a.** Head extended downward to form a short beak... Scorpionflies



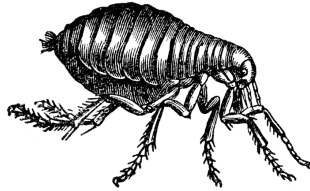
**15b.** Head does not form a short beak... Lacewings, antlions



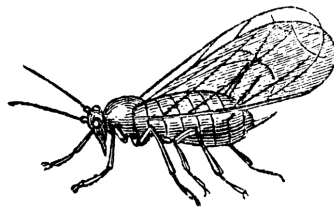
**16a.** Body flattened from the side; or from top to bottom; bugs on it...Go to #17

**16b.** Body generally not flattened; 2 or 3 short to long tails are present at the tip of the abdomen...Go to #18

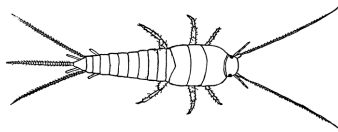
**17a.** Body flattened from the side; jumping insects with large legs.....Fleas



**17b.** Body flattened from top to bottom...Sucking lice



**18a.** Large eyes and three tails one of which is longer than the others...Silverfish



**18b.** Not like 18a...Springtails

