

**George Washington Management Area  
RI Department of Environmental Management  
Pascoag, RI**



George Washington is a large circular cut, containing a dense array of diverse vegetation.

**Introduction**

This site, which is owned and managed by RIDEM, involves driving up a rough dirt road, which requires high clearance and may not be open in the winter, but it offers the chance to visit an interesting and very diverse 22 clearcut that was harvested in 2010.

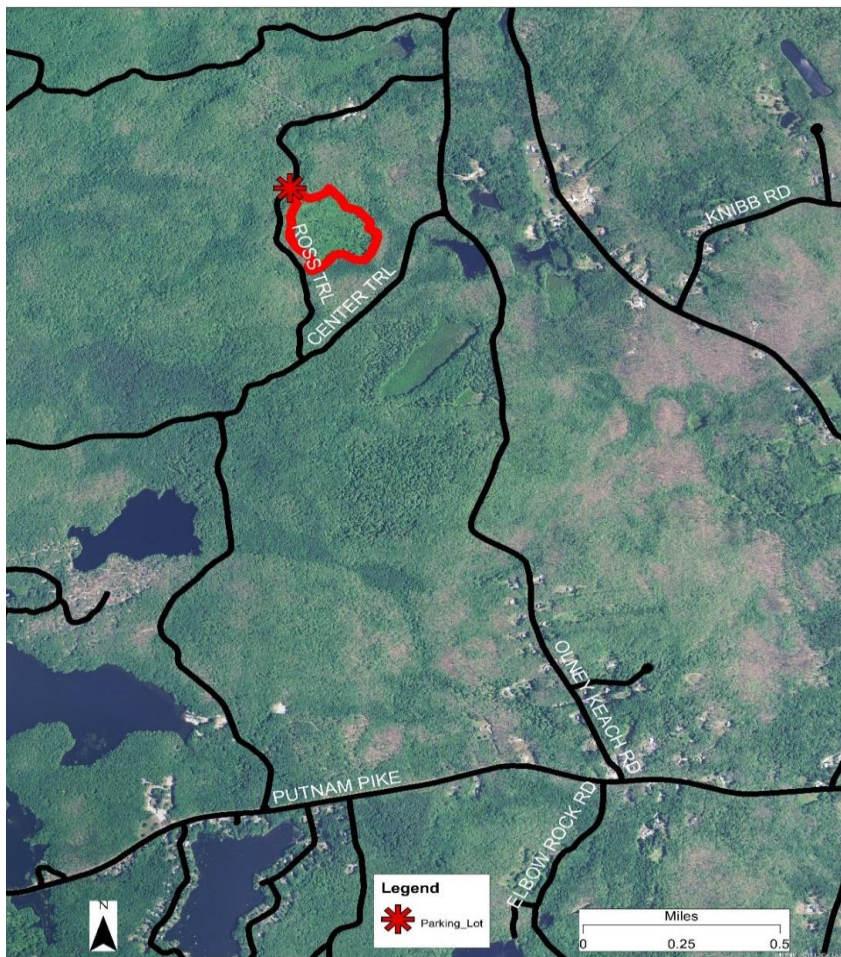
**Access**

From Putnam Pike in Pascoag, turn north on Olney Keach Road and after 2.2 miles turn west onto Ross Trail. After 0.65 miles, you will see the clearcut on the east side of the road. You can park on the road right next to the clearcut.

During hunting season, all visitors should wear fluorescent orange clothing (for RIDEM regulations about clothing during hunting season, see <http://www.eregulations.com/rhodeisland/hunting/general-information>).

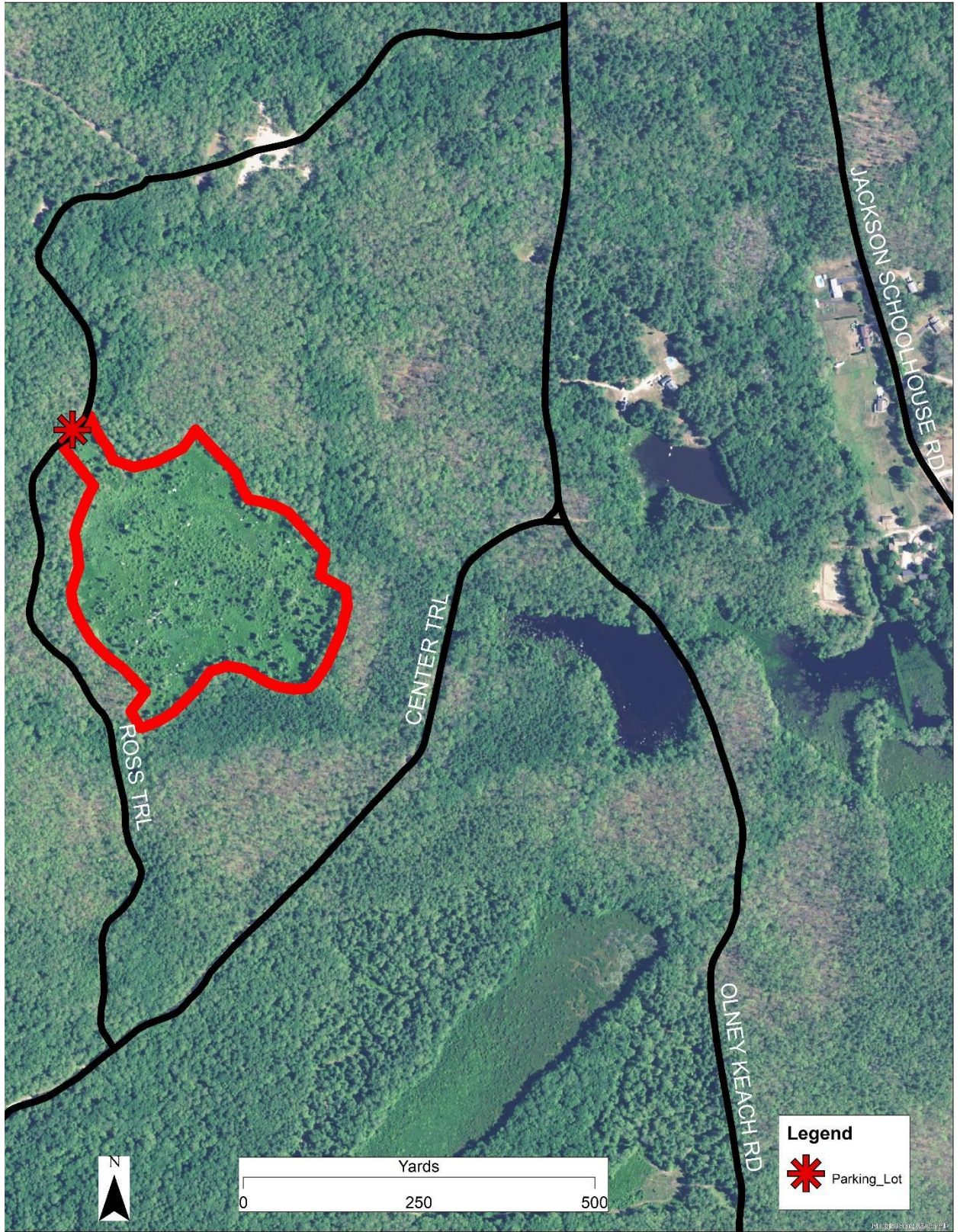


Limited grass/dirt parking occurs alongside the dirt and gravel Ross Trail road



See map of cut on next page







## Description

The forest surrounding the 22 acre clearcut is dominated by mixed hardwoods. Inside the clearcut, the regenerating vegetation includes portions of oak, maple and chestnut with a height of 10-12 feet (as of 2017), yellow and black birch with a height of 3-12 feet, and lower patches of blueberry and huckleberry. Other species regenerating in the clearcut include sassafras, sheep laurel, sweet fern and white pine. A number of mature oaks and white pine over 30 feet tall were retained to serve as seed trees and to provide food sources for wildlife. During the harvest, a moderate large amount of slash was left on the ground to reduce damage from deer browsing and provide habitat for wildlife.



The cut offers a diverse array of features and vegetation species composition across a large area.



Heavy undergrowth occurs throughout the cut, dominated by blueberry and huckleberry.





Predominantly deciduous regrowth of oak, maple, chestnut and birch populates the cut.



Coniferous saplings of white pine occur sporadically throughout the cut, mixed in with the understory.





An overgrown trail continues into the center of the cut, allowing easy access to view its composition.



The cut has a diverse understory, incorporating berry shrubs, saplings and herbaceous species like Bracken fern, pictured here.

Photo credits: Ryan Healey