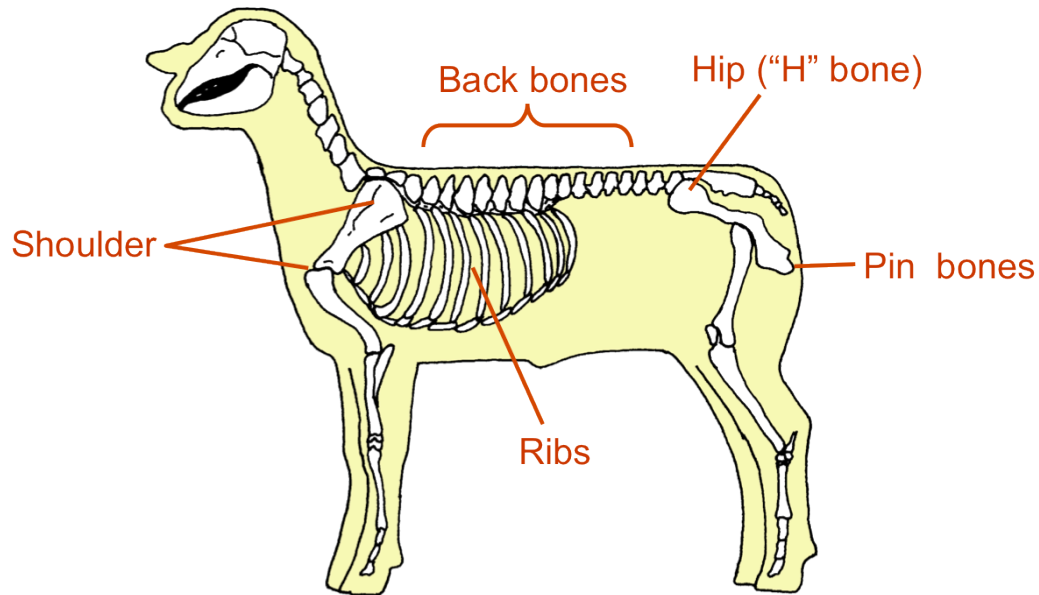
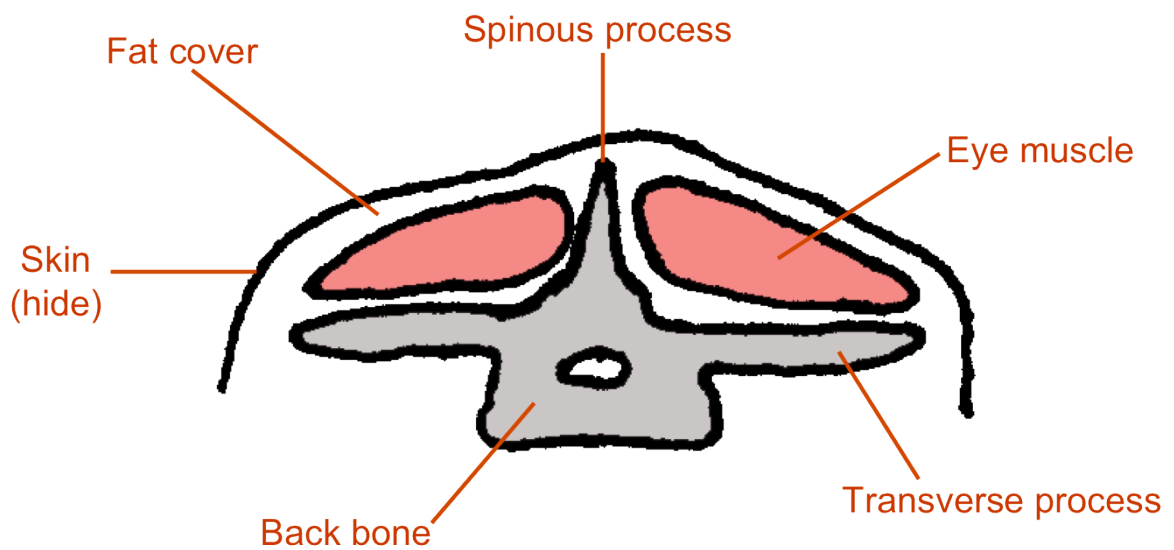


How to Body Condition Score

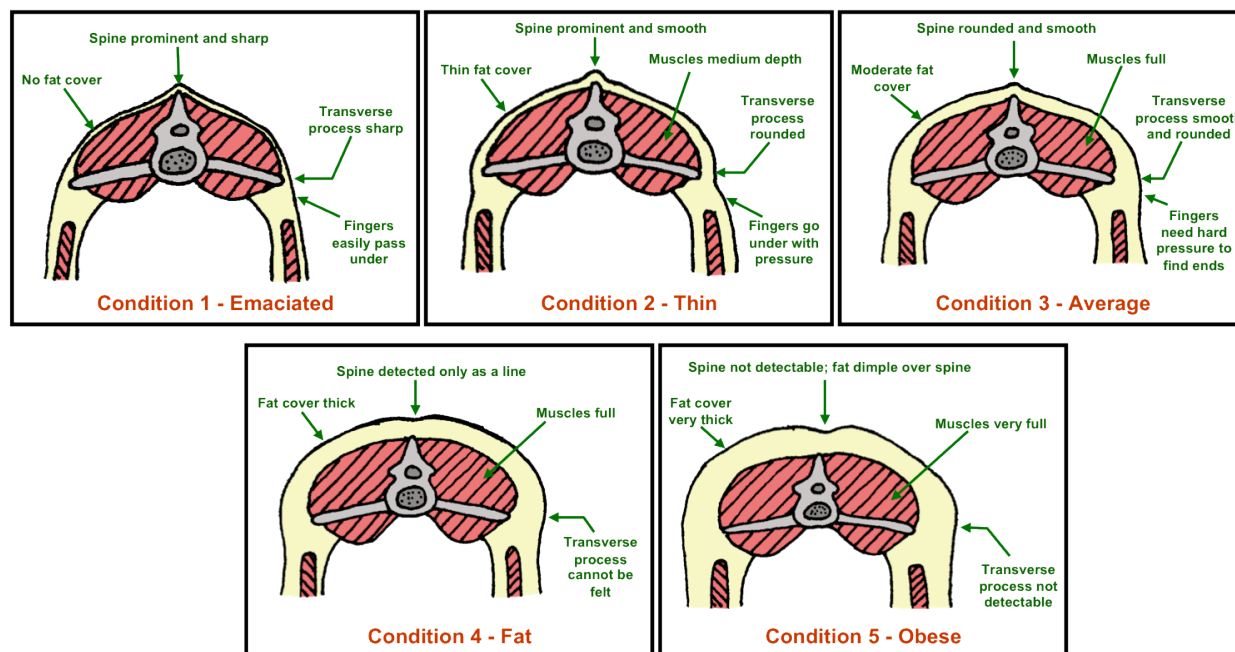
(Palpation Areas)



Palpation Areas



Body Condition Scores – Sheep/Goats



Adapted from "Body Condition Scoring of Sheep" by J.M. Thompson and H. Meyer (Oregon State University)

■ Changes in body condition score over the production cycle (**sheep and goats**):

| Period | Sheep | Goats | Desired Condition Score |
|----------------------|----------------------|-------|-------------------------|
| | (No. days in period) | | |
| Open (not lactating) | 134* | 78* | 2 |
| Flushing | 28 | 28 | 2+ |
| Gestation | 147 | 147 | 3 |
| Lambing (lactation) | 56 | 112 | 3+ (at lambing) |

*Adjusted by length of lactation

Adapted from the University of Kentucky, Department of Animal Science.