



1: The contents of a typical trawl.



2: Dragon Fish



3: *Gnathopausia ingens*. Squirts bioluminescent goo when feels threatened. :]



4: Huge female dragon fish



5: Blurry picture of lantern fish and a small jelly.



6: Another blurry lantern fish. You can see the photophores better in this one.



7: Another Gnathophausia.



8: A-frame of the New Horizon



9: Zodiac dive boat.



10: Jill's lab set-up.  
11: Snipe eel skin!



12: Super cool spookfish!



13: Another typical trawl catch.



14: HUGE Gnathophausia.



15: Trawl catch with huge jelly





16: Bringing in the trawl



17: Scientists inspecting the catch



18: Another type of jelly



19: CTENOPHORES!



20: I forget what this fish is but there are krill there to show how small it was.



21: Shallow water fish that we accidentally caught.



22: I forget what kind of fish this is but his guts came out. ./ It's a Big Scale (Family Melamphaeidae)



23: Same fish



24: One of Trisha's cool heteropods



25: Colonial Salps. We caught a huge string of these.



26: I forget exactly what this is but it's some sort of worm.



27: Same worm, ventral side.



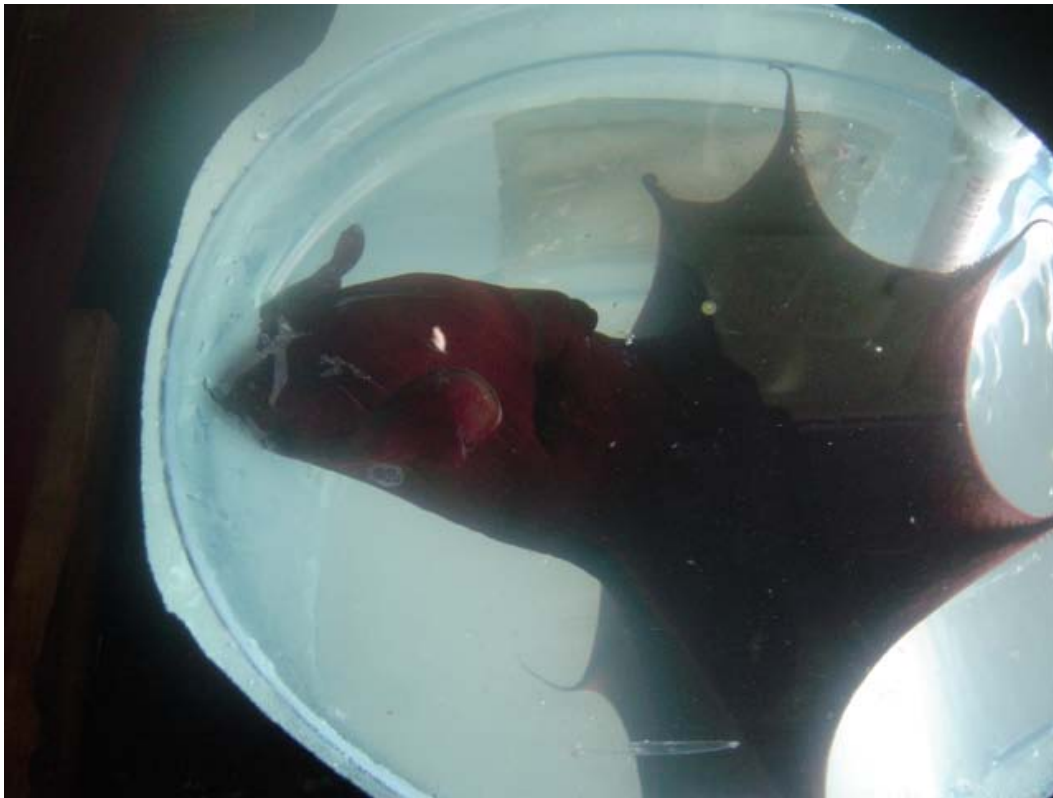
28: FINALLY A GOOD LANTERN FISH PICTURE!



29: I forget what fish this is but they're really tiny!



30: Lantern fish with another fish hanging out of its mouth.

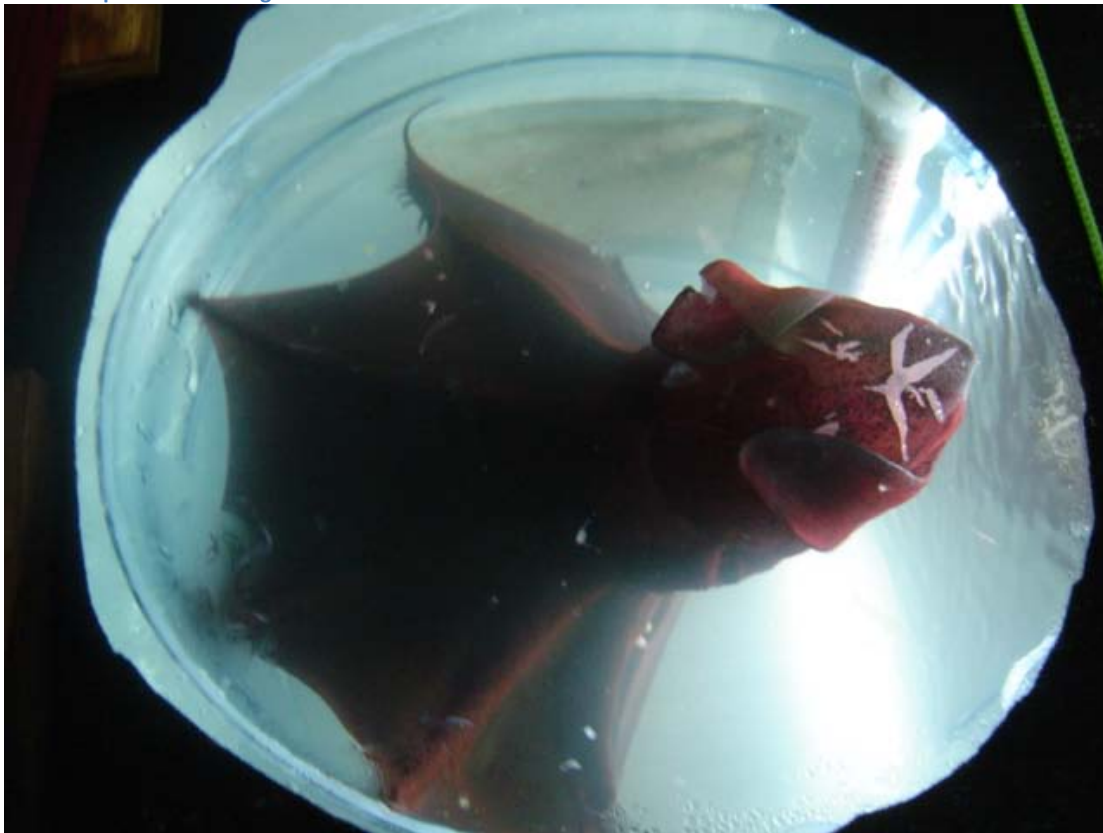


31: VAMPIRE SQUID!





32: In the process of hiding



33: He was in really good shape...the only damage was there at the top of his head



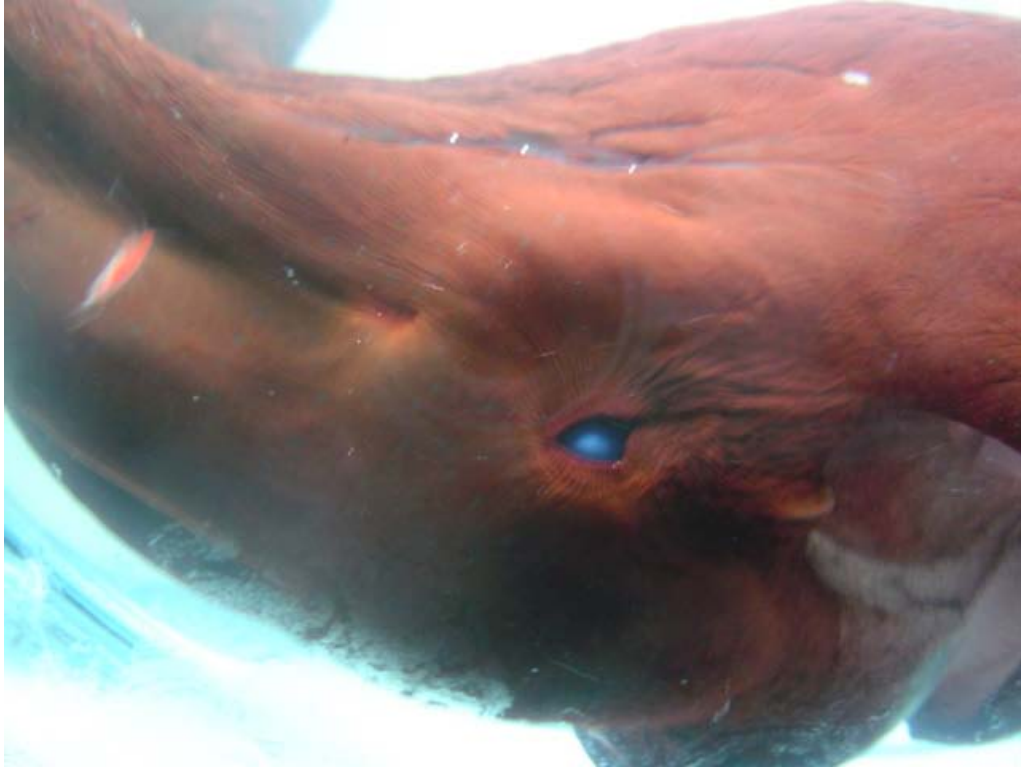
34: Rock fish? NO.....





35: Swimming mode





36: Vampire Eye





37: Hiding mode



38: Vampire beak



39: Vampire Arm