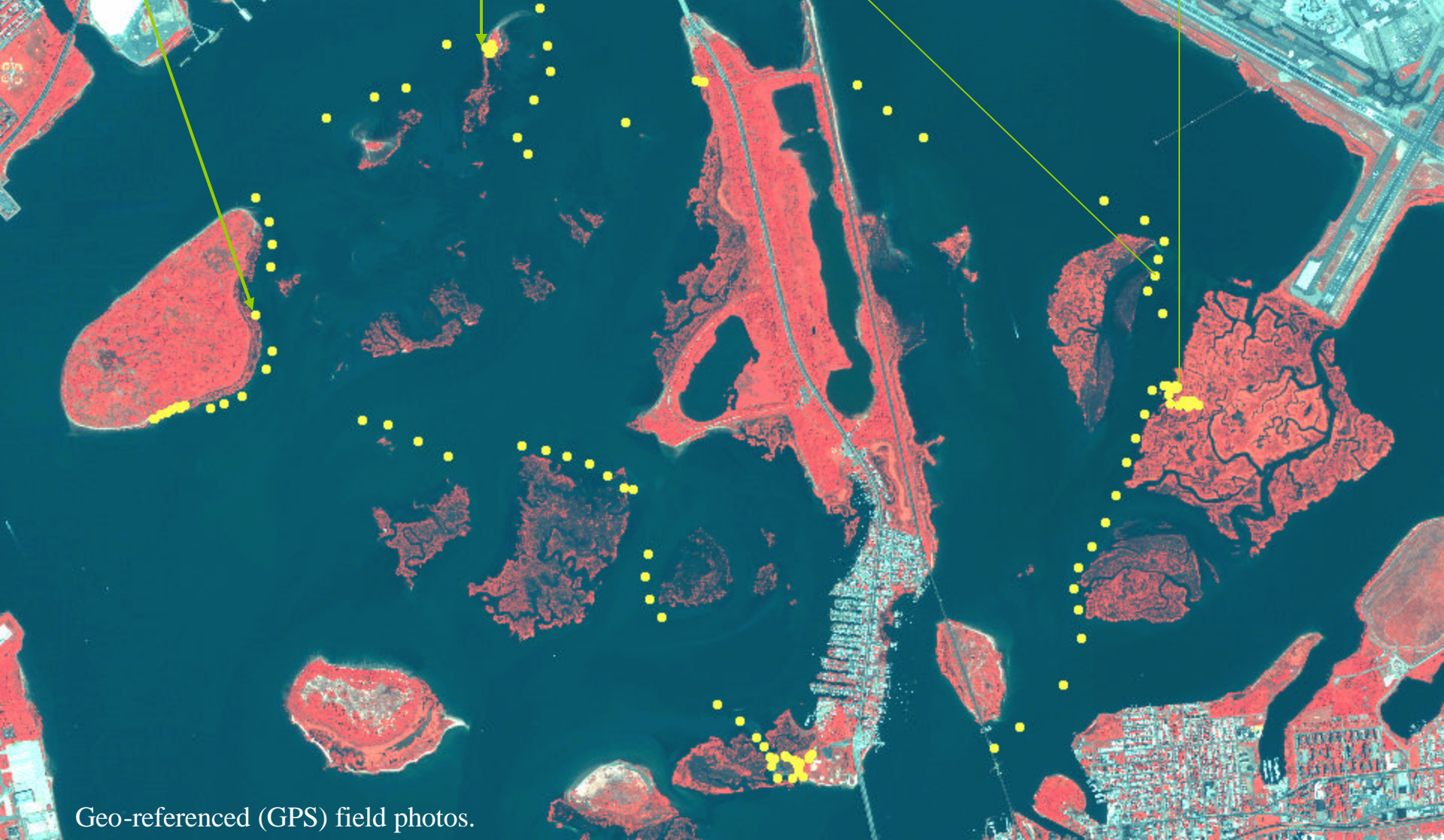
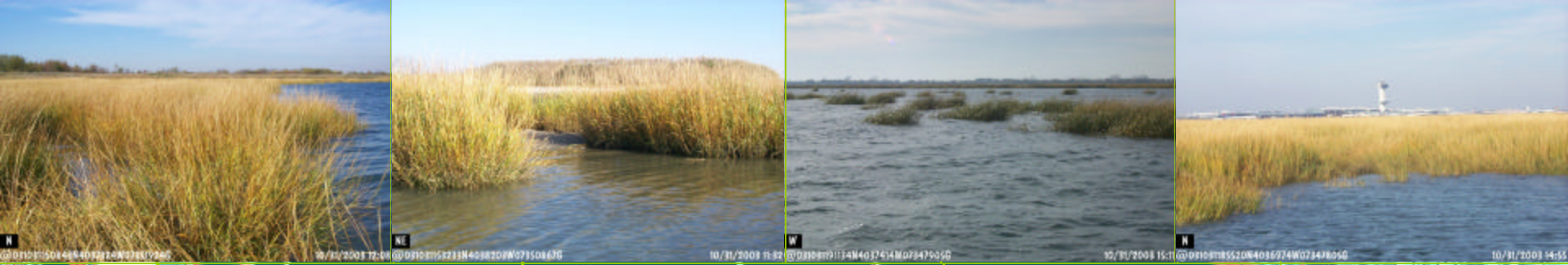




QuickBird satellite image of the Jamaica Bay shows spatial distribution of the salt marsh. The image was acquired on September 10, 2003. This is a true color display (Bands 4,2,1 in RGB).



The yellow dots show the locations of salt marsh ground checking conducted on October 31, 2003. QuickBird satellite image of the Jamaica Bay was acquired September 10, 2003. This is a pseudo color display (Bands 4,2,1 in RGB):



Geo-referenced (GPS) field photos.

Geo-referenced (GPS) field photos of the Jamaica Bay salt marshes



Geo-referenced (GPS) field photos of the Jamaica Bay salt marshes

