

# ASCLS-CNE

American Society for Clinical Laboratory Science

Central New England

*Massachusetts - New Hampshire - Rhode Island*

Microbiology  
Chemistry  
Transfusion Medicine  
Management  
Societal Issues

Hematology  
Immunology  
Molecular Diagnostics  
Public Health

Cytology  
Point of Care Testing  
Forensic Science  
Histology  
Student Forum

## 66th

*Annual Clinical Laboratory Science Convention*

**April 29-May 1, 2014**

**Rhode Island Convention Center**

*Providence, Rhode Island*

*Jointly sponsored with*

**AACC-American Association for Clinical Chemistry**

**BRISAH—Board of Rhode Island Schools of Allied Health**

**CLMA - Bay State Chapter CLMA**

**NEB ASM - Northeast Branch American Society for Microbiology**

**RICA - Rhode Island Cytology Association**

**RISH-Rhode Island Society for Histology**

## American Society for Clinical Laboratory Science-Central New England

The American Society of Clinical Laboratory Science of Central New England is a constituent Society of the American Society for Clinical Laboratory Science. Our membership is a combination of Massachusetts, Rhode Island and New Hampshire residents. These members work on behalf of laboratory practitioners and the practice field in an attempt to provide improved diagnostic technologies, patient understanding of testing, access of clinical scientists to quality professional development and legislation promoting professional standards and licensure. These actions represent safeguards for the patient as a consumer and the clinical scientist as a professional. Networking within our profession creates bridges, supporting our personal and work lives. The combined energies of this organization create a powerful body.

There are many issues currently facing our profession and ASCLS needs your membership and support. Some of the other issues and activities with which ASCLS-CNE is currently involved in include lobbying for appropriate reimbursement for laboratory services, developing a public relations campaign for the clinical laboratory industry and offering continuing education for laboratory personnel throughout southern New England. None of these activities can continue without the personal and financial support of our members.

**If you are interested in becoming a member, or in renewing your membership, please do so at [www.ascls.org](http://www.ascls.org).**

Dear Colleagues-

On behalf of the ASCLS-CNE Board of Directors and Planning Committee, it is my distinct pleasure to invite you to the 2014 Annual Convention. The Planning Committee has been hard at work preparing a cutting-edge program that promises to deliver high-quality continuing education. Speakers from across the nation and our own backyard will present important new updates on critical topics currently shaping our practice field. These facts make this meeting a 'one-stop shop' for obtaining PACE-approved credits that will help you stay on top of your employer or certification agency's continuing education requirements.

Other notable mainstays of this meeting will once again be present. As in the past, we will have several workshop offerings that provide a more hands-on and applied approach to learning various topics and skill sets. The students of ASCLS-CNE will also be well-represented and once again showcasing their talents in our annual poster competition. Furthermore, the luncheons will provide you a chance to kick back, relax, listen to an engaging presentation, and enjoy a wonderful meal with colleagues. Also, the annual business meeting will be held on Wednesday evening and provides you a chance to hear the important happenings within ASCLS-CNE. Finally, the opportunity to network with new colleagues and catch-up with old friends is an experience that only an in-person meeting such as this one can provide.

This year will also bring about an exciting new change to our exhibit hall. Over the past few years, exhibitor interest has increased substantially thanks to your support. This has brought about the need for expansion. To assure that you, as attendees, get the most satisfying experience possible, the expo has been moved to a larger space in the convention center. The larger space will allow you to meet a greater number of vendors and provide them with more space to showcase their cutting-edge laboratory instrumentation and equipment. This is an exciting step forward for this meeting and we hope that this expansion provides you with the best experience possible.

Whether this is your first meeting or your tenth, I encourage you all to come visit us in Providence and consider bringing a colleague. I look forward to seeing you all!

Kyle Riding, PhD, MLS(ASCP)<sup>CM</sup>  
ASCLS-CNE President 2013-2015

### **ASCLS-CNE Executive Board -2013-2014**

#### **President**

Kyle Riding, Quincy College, Quincy, MA

#### **President-Elect**

Brandon Healy, Bay State Medical Center, Springfield, MA

#### **Past President**

Kyle Braga, CharterCARE Health Partners, North Providence, RI

#### **Secretary**

Heather Hewes, St. Josephs Health Service of RI

#### **Treasurer**

Wayne Leblanc, University of Massachusetts-Dartmouth, MA

#### **Student President**

Georgina Nicolo, University of Massachusetts-Dartmouth, MA

#### **Board of Directors**

Leslie Martineau, CharterCARE Health Partners, North Providence, Rhode Island

Frank Scarano, University of Massachusetts-Dartmouth, Dartmouth, MA

Randi Sullivan, Children's Hospital, Boston, MA

Beth Hart, University of Massachusetts-Dartmouth, Dartmouth, MA

2014 ASCLS-CNE Annual Convention Program Committee

**General Chairman**

David Mello, RI Hospital, Providence, RI

**Program & Registration Chair**

Maddie Josephs, Community College of RI, Lincoln, RI

**Chemistry**

Kyle Braga, CharterCARE Health Partners, RI  
Denise Morel, Sturdy Memorial Hospital, Attleboro., MA

**Microbiology**

Theresa Castellone, Fatima Hospital, N. Providence, RI  
Peg Romanovich, CharterCARE, N. Providence, RI

**Molecular Biology**

Shashi Mehta, Rutgers School of Health Professions, Newark, NJ  
David Le, Rhode Island Hospital, Providence, RI  
Kristin Carpenter-Azevedo, RI Department of Health, Providence, RI

**Forensic Science**

Debra Sizemore, MS, CLS

**Hematology**

Karen Ferreira, RI Hospital, Providence, RI  
Matt Keane, RI Hospital, Providence, RI  
Cynthia Schneider, RI Hospital, Providence, RI  
Marco Parada, RI Hospital, Providence, RI  
Karen Rezendes, University of Mass., Dartmouth, MA

**TRANSFUSION MEDICINE**

Phil Hoffman, St. Joseph Health Services, North Prov., RI  
Darlene Folan, RI Blood Center, Providence, RI

**Management**

Leslie Martineau, CharterCARE Health Partners, RI

**CLMA**

Jayson Colby, Bedford, MA

**Point of Care Testing**

Maddie Josephs, Community College of RI, Lincoln, RI

**Public Health**

Mary Louise Greeley, Newport, RI  
Fran Ingersoll, CLSI, Wayne, PA

**Cytology**

Barbara Klitz, University of RI, Providence, RI  
Nadia Saadeh, University of RI, Providence, RI

**Histology**

Rose Tavares-Proulx, Community College of RI, Providence, RI

**Exhibits**

Jim DeVona, Kent Hospital, Warwick, RI  
Maureen Brown, Kent Hospital, Warwick, RI

**Member-at-Large**

Betsy Reilly, Rhode Island Hospital  
Rosa DeOliveira, Sebia

**Finance**

Frank Scarano, University of Mass., Dartmouth, MA  
Wayne LeBlanc, University of Mass., Dartmouth, MA

**Poster Session**

Kristen Carpenter-Azevedo, RI Department of Health, Prov. , RI  
Barbara Klitz, RI School of Cytology, Providence, RI

**Awards**

Maddie Josephs, Community College of RI, Lincoln, RI

**Membership & Hospitality**

Leslie Martineau, CharterCARE Health Partners, RI

**Student**

Georgina Nicolo, University of Mass-Dartmouth, MA



Once again, this year, ASCLS-CNE is pleased to announce that participants at our Annual Convention will be earning P.A.C.E credits.

Professional Acknowledgment for Continuing Education (P.A.C.E.®) is an administrative system serving as the quality assurance mechanism for continuing education programs offered to clinical laboratory professionals. P.A.C.E.® is of benefit to continuing education providers and the laboratory professionals who participate in the programs they provide.

Participants in P.A.C.E.®-approved educational sessions have confidence in the quality of the program. P.A.C.E.® continuing education contact hours satisfy continuing education requirements for federal regulations, state licensure, certification agencies and employers.

All registrants will receive a P.A.C.E certificate of attendance upon arriving at the Annual Convention. At the conclusion of the Annual Convention, as participants are leaving, a member of the program committee will sign the certificate and place the **P.A.C.E** sticker on the form. This will serve as formal documentation of CE that can be kept in your file for employer, state licensure and certification maintenance requests. If you have any questions regarding P.A.C.E., please contact one of the program committee members or visit [www.ascls.org](http://www.ascls.org).

## **ON-LINE REGISTRATION**

On-line registration is available with the use of a credit or debit card.

Please visit: [www.ascls-cne.org/annual-convention](http://www.ascls-cne.org/annual-convention)

Registration fees are listed on the registration form included in this program. Membership rates are available for members of ASCLS, as well as the sponsoring organizations. To qualify for member rates, membership numbers must be included on registration forms.

**REGISTRATIONS received prior to April 26, 2014 include PARKING VOUCHERS. Late & walk-in registrants must park at their own expense.**

Receipts will be available at the meeting only.

## General Meeting Information

### **Nametags**

Name tags will be provided at the registration desk and are required for admission to all sessions.

### **Messages**

Please use the message board in the registration area for general messages. For **emergency** messages, call Rhode Island Convention Center at (401)458-6500.

### **Program Brochures**

For additional brochures call Convention chairman David Mello, (401)444-5724 or email at [djmello@lifespan.org](mailto:djmello@lifespan.org) or Program Chair, Maddie Josephs, 401-434-0050 or email at [mjosephs@ccri.edu](mailto:mjosephs@ccri.edu).

### **Membership**

Please visit the Membership Booth for information about ASCLS.

### **Special needs**

The meeting facility is wheelchair accessible. For special needs, please contact the RI Convention Center.

### **No Smoking Policy**

Smoking is not permissible in the facility.

### **Exhibit Only**

Complimentary passes will be issued at the registration desk for those wishing to visit the exhibits only. Please do not pre-register for "exhibit-only" passes.

### **Registration Form**

If not registering on-line, please use the form located at the back of the program brochure. **This form may be photocopied.** Please use a separate form for each person registering.

---

## **REGISTRATION DEADLINE– APRIL 26, 2014**

**Register on-line**

**or**

**Mail registration form to:**

**Maddie Josephs  
43 Bourne Avenue  
Rumford, RI 02916**

**No refunds will be given after APRIL 26, 2014. Payment must accompany the form.** Payment or money order should be made payable to:

**ASCLS/CNE**

Register early!!!

If you have questions regarding your registration, please call Maddie Josephs at (401)434-0050 or email [mjosephs@ccri.edu](mailto:mjosephs@ccri.edu).

**Pre-registration (before April 26, 2014) will include parking. Vouchers will be included in the registration packets, which are picked up on the day of attendance.**

**PARKING VOUCHERS MUST BE EXCHANGED FOR A PARKING PASS WHICH IS NEEDED TO EXIT THE PARKING GARAGE. THESE WILL BE MADE AVAILABLE TO REGISTRANTS AT THE REGISTRATION TABLE.**

# Are You Inspection Ready, Everyday?



- ✓ CAP / TJC Readiness Dashboard
- ✓ Peer Review Automation
- ✓ Lab Staff Mgmt with OPPE
- ✓ Process Tracking / Verification
- ✓ Wireless Equipment / Reagent
- ✓ Lab Issue Management
- ✓ Lab Document Management
- ✓ LIS Data Mining

Independent modules work seamlessly with your LIS

**Thank you for making AccuPathology #1 in lab administrative automation**

**Visit [accucoregroup.com](http://accucoregroup.com) or call (267) 564-5015 or a demonstration**

**Charter CARE**

---

HEALTH PARTNERS

**St. Joseph Health Services of RI  
Roger Williams Medical Center**

Community College  
Of  
Rhode Island

**Allied Health Department**

Clinical Laboratory Technology Program  
Histotechnician Program  
Phlebotomy Program

COMMUNITY COLLEGE OF RHODE ISLAND

# Tuesday April 29, 2014

8:30am-3:00pm

11:00am-11:15am

12:00pm

12:30pm-2:00pm

*Tuesday luncheon session:*

3:00pm-3:30pm

4:30pm-5:30pm

Registration

Coffee Break

Ribbon Cutting for Opening of Vendor Exhibits

Lunch break (separate fee for lunch required)

**Medical Marijuana**

Coffee Break

**ASCLS-CNE Annual Business Meeting– All are welcomed to attend**

## CHEMISTRY

10:00am-12:15pm **Intermediate** 2 contact hours

### The New Universal Definition of Acute Myocardial Infarction (AMI) and the Role of Troponin

In this session, you will learn about the ever evolving world of diagnosing Acute Myocardial Infarctions (AMI) and the implications to current practice, and well as the changing role of Troponin. We will also discuss the different types of MI and their causes. And finally, we will discuss high sensitive Troponins.

**Brad Mayeux, MSN, RN**  
Senior Medical & Scientific Liaison  
Roche Diagnostics  
Boston, MA  
*Sponsored by Roche Diagnostics*

## CHEMISTRY

2:00-4:30pm **Intermediate** 2 contact hours

### Primary Immunodeficiency: How to Diagnose Cellular Defects Which Lead to Disease

Primary Immunodeficiency affects 1:500 children born in the United States. Symptoms include failure to thrive in infants and the inability to clear acquired infections. We will discuss components of the immune system and how defects in various compartments can provide diagnostic clues to the source of the immune defect.

**Richard M. O'Hara, Jr., PhD**  
Sr. Director, Scientific Affairs  
The Binding Site, Inc.  
San Diego, CA

*Sponsored by The Binding Site*

## TUESDAY LUNCHEON

**Basic**

1 contact hour

### Medical Marijuana Takes Hold in New England: How RI and MA are Leading the Way

As more and more states are allowing individuals who are sick to use medical cannabis, MA and RI are leading the way for this emerging medical trend. This presentation offers a clinical, legal and business perspective on one of the more fascinating public health debates emerging in the United States.

**Michael D. Cutler, JD**  
**Jill Griffin, MD**  
**Chris Reilly, MBA**

**Exhibits open on  
Tuesday, April 29th at Noon!**

# Tuesday April 29, 2014

## WORKSHOP #1 Bioterrorism

\*9:00am to 4:30pm

Intermediate

6 contact hours

### **What Every Health Professional Needs to Know About Bioterrorism**

This session will provide an overview and discuss the history of bioterrorism, describe potential agents and assess our readiness to respond to a bioterrorist attack. Detailed discussions will also cover the potential use of small pox as a viral agent and the use of the bacterial agent, anthrax, in a "real" bioterrorist incident in 2011.

**Edward Balkovic, PhD**  
Principal Microbiologist  
Genzyme-a Sanofi Company  
Framingham, MA

---

### **Designing Genome-Derived Epitope-Based Vaccines Using Immunoinformatic Tools Against Emerging Pathogens: H7N9 Case Study**

Emerging and re-emerging infectious diseases represent a significant challenge for next-generation vaccine design and bioterror preparedness. EpiVax designs vaccines using a proprietary suite of online immunoinformatics tools for accelerated design of genome-derived, epitope-driven vaccines generated from protein sequences. With proof of principle established in animal models for vaccines against Tularemia, Vaccinia and *H. pylori*, the iVAX toolkit exemplifies a rapid, efficient, easily accessible and broadly applicable solution to accelerate the development of critically important vaccines for human health and biodefense.

**Dr. Annie De Groot, MD**  
CEO/CSO  
EpiVax, Inc.  
Director/Professor  
Institute for Immunology and Informatics, University of Rhode Island

---

### **More Bang For Your Buck: Getting the Most out of the CAP Laboratory Preparedness Exercise (LPX)**

Microbiology laboratories throughout the country participate in the CAP LPX. The exercise provides an invaluable opportunity for laboratories to work with attenuated strains of agents associated with bioterrorism. We will discuss the purpose of the LPX and how it can be utilized in your lab to optimize its value.

---

### **We Have to do What? Clinical Microbiology Laboratory Responsibilities Under the Federal Select Agent Program**

Compliance with the Federal Select Agent Program Regulation can be a daunting task for any clinical microbiology laboratory. This presentation will focus on the responsibilities of the laboratory, explain the Select Agent Program forms that are required and discuss the processes that are mandated under the regulation.

**Cynthia Vanner, BS**  
Supervising Clinical Laboratory Scientist, Bioterrorism Response & Special Pathogens  
Rhode Island State Health Laboratories  
Providence, RI



## HEMATOLOGY

10:00-12:30pm      **Advanced**      2 contact hours

### Changing Views on CLL

Once dismissed as an “old person’s disease”, CLL has turned out to have many different disease presentations in patients from 19 to 90. The diagnostic procedures have been updated with emphasis on cell marker testing and therapeutic decisions involve genetic information increasing the impact on and of the clinical laboratory.

**Susan J. Leclair, PhD, CLS(NCA)**  
Chancellor Professor  
Department of Medical Laboratory Science  
University of Massachusetts-Dartmouth  
Dartmouth, MA



## HEMATOLOGY

2:00-3:00pm      **Intermediate**      1 contact hour

### New Anticoagulants Rivaroxaban & Dabigatran: What the Coagulation Lab Needs to Know

Rivaroxaban, a direct factor Xa inhibitor, and Dabigatran, a direct thrombin inhibitor, were recently FDA approved and are the first anticoagulants since warfarin that are taken orally. They do not require routine laboratory monitoring, but some medical situations might benefit from monitoring. Therefore, laboratories should be prepared for these anticoagulants so that their patients can be managed safely. The presentation includes practical facts about these anticoagulants, suggestions for assessing their levels with routine and specialized tests, and the numerous tests that cannot be performed (due to interference) while patients are taking either of these anticoagulants.

**Elizabeth Van Cott, MD**  
Director, Coagulation Laboratory  
Massachusetts General Hospital  
Boston, MA  
*Sponsored by CLMA*

3:30-4:30pm      **Basic**      1 contact hour

### Clinical Utility of the D-dimer Assay

This presentation will discuss the pathogenesis and diagnosis of VTE and the algorithm employed when DVT or PE is suspected. Types of D-dimer assays and recommendations for assay selection will be reviewed.

**Sally Pucci, MBA, SH(ASCP)**  
Technical Sales Representative, Hemostasis  
Instrumentation Laboratory  
Bedford, MA

*Sponsored by Instrumentation Laboratory*

## TRANSFUSION MEDICINE

10:00-11:00am      **Intermediate**      1 contact hour

### **Controversies in Transfusion Therapy for Sickle Cell Disease**

We will discuss how advances in transfusion therapy, such as extended phenotyping and Babesia screening have decreased risks for patients with Sickle Cell Disease. We will also discuss how the advances in iron chelation, hydroxyurea, transcranial Doppler's, and stem cell transplantation have affected transfusion therapy in these patients.

#### **Anjulika Chawla, MD**

Director, Sickle Cell/Thalassemia Program  
Hasbro Children's Hospital  
Associate Professor  
Alpert School of Medicine at Brown University  
Providence, RI

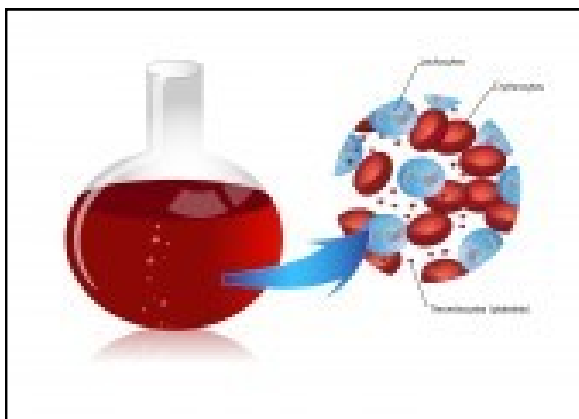
11:30am-12:30pm      **Basic**      1 contact hour

### **Management of Obstetrical Hemorrhage**

A case of obstetrical hemorrhage will be presented. Definitions, trends and risk factors will be detailed. Finally, management strategies for such hemorrhages will be discussed.

#### **Kerrie L. O'Brien**

Assistant Medical Director, Blood Bank  
Beth Israel Deaconess Medical Center  
Boston, MA



## TRANSFUSION MEDICINE

2:00-3:00pm      **Intermediate**      1 contact hour

### **Massive Transfusion: Improving Patient Outcomes**

There has been renewed interest in improving patient outcomes in massive transfusion, especially in trauma. The speaker will review some of the recent studies looking at the impact of RBC:FFP ratio, recombinant Factor VIIa and antifibrinolytics in this high risk patient population.

#### **Christopher P. Stowell, MD, PhD**

Director, Blood Transfusion Service  
Massachusetts General Hospital  
Associate Professor of Pathology  
Harvard Medical School  
Boston, MA

3:30-4:30pm      **Basic**      1 contact hour

### **Using Wireless Environmental Monitoring in the Laboratory: Transfusion and Blood Bank Applications**

We will discuss the benefits of using Wi-Fi environmental monitoring system for critical applications. It will cover the prerequisites, planning, implementation and best practices for managing wireless environmental monitoring systems. We will also discuss additional applications that are available when a Real Time Location Services platform is used for environmental monitoring.

#### **Joel Cook**

Healthcare Solutions Director  
Stanley Healthcare  
Waltham, MA

**Sponsored by Stanley Healthcare**

# Tuesday April 29, 2014

## Workshop #2 MOLECULAR DIAGNOSTICS

\*9:00am to 4:30pm

Please Note Start Time

(6 hours)

### The Evolution of Molecular Diagnostics

Frustrated with the jargon?

PCR, Primers, Probes, Amplification.....

Join us for a day that demystifies the brave new world of.....**Molecular Biology**

From basic theory to instrumentation as well as applications and data interpretation,  
You will experience a thorough introduction to the topic.

This workshop is designed for laboratory professionals who would like a concise overview of molecular diagnostics and who wish to enhance their lab expertise and knowledge in molecular based methods.

#### **Cynthia Jackson, PhD**

Director of Clinical Molecular Biology  
Rhode Island Hospital  
Warren Alpert School of Medicine at Brown  
Providence, RI

#### **Shashi Mehta, PhD**

Associate Professor  
Rutgers School of Health Professions  
Newark, NJ

## POINT OF CARE TESTING

10:00-12:30pm

**Basic**

2 contact hours

### **“Get Out of the Basement” Our Role in Patient Centered Care**

This presentation will focus on the laboratorians role in advancement, acceptance and success of patient centered care or POC. We will define patient centered care, benefits of “embracing” our new and expanded role, and way to “step out of the basement” and become an integral part of the care team.

#### **Stephanie Mihane, MLS(ASCP)<sup>cm</sup>**

Point of Care Coordinator  
Kaiser Permanente-Colorado Region  
Denver, CO

## POINT OF CARE TESTING

2:00-4:30pm

**Advanced**

2 contact hours

### **Point of Care Testing: POCT An Evolving Approach to Direct Patient Care**

Point of Care testing is defined as medical testing at or near the site of patient care. The first reported use of POCT was in the Papyrus 1550 BC by Egyptian physicians when they used ants to determine glycosuria in patients suspected of having Diabetes Mellitus. Today, as it was then, the goal of POCT is to provide immediate, convenient & easy to use diagnostic tests which shorten the therapeutic turnaround time when providing care for a patient. Since the evolution of blood glucose, blood gas, urinalysis, pregnancy and coagulation testing in the mid-1990s, the menu of POCTs has expanded from <10 tests available in 1995 to approximately 110 tests available today. This workshop will overview historical, current and future uses of POCT and pose some interesting questions about laboratory and POCT testing.

#### **Jeffrey A. DuBois, PhD, MBA, C(ASCP)SC, FACB**

Vice President, Medical & Scientific Affairs  
Nova Biomedical Corporation  
Waltham, MA

**Sponsored by Nova Biomedical Corporation**

## FORENSIC SCIENCE

10:00-11:00am    **Intermediate**    | contact hour

**“It’s a Hit!”  
Why DNA Profiling & Databasing are Useful  
Investigatory Tools**

This presentation will focus on the use of databases in criminal investigations, specifically the value of DNA profiling and how this tool is used in a DNA database. The presentation will briefly explain how a DNA profile is generated and the history and development of the RI State and National DNA Databases. Casework examples will be presented to demonstrate how DNA database matches are used as an investigatory tool. Database regulations will also be discussed to further the understanding that there are restrictions as to whose DNA profile may be included in a DNA database. The presentation will conclude with the future of the DNA databasing and changes in the law that may broaden database use.

**Karen Lynch, MS, MT(ASCP)**

Principal Forensic Scientist, RI CODIS Administrator  
Rhode Island Department of Health Laboratories  
Providence, RI

11:15am-12:15pm    **Basic**    | contact hour

**CSI at URI:  
The Rhode Island State Crime Laboratory**

This presentation will describe the basis of crime scene investigations and the role of the RI State Crime Laboratory in training investigators. Case studies will be used to illustrate the connection between investigators and the Laboratory. Emphasis will be placed on civil cases in which Blood Alcohol Concentrations were a major factor. The Forensic Science Partnership at the University of Rhode Island will also be discussed.

**Dennis Hilliard, MS**

Director, State Crime Laboratory  
Adjunct Assistant Professor, University of RI  
Kingston, RI

## FORENSIC SCIENCE

2:00-3:00pm    **Basic**    | contact hour

**Fundamentals of Forensic Toxicology**

In this session, the speaker will define and discuss the basic principles and procedures utilized in forensic toxicology, as well as identifying the role of the forensic toxicology laboratory in Rhode Island and the significance of its findings, including impaired driving and post-mortem investigations. The presentation will include case studies, current drug trends and emerging designer drugs.

**Laurie Ogilvie, MS, FTS-ABFT**

Supervisor, Forensic Toxicology  
RI Department of Health Labs/ Forensic Science Unit  
Providence, RI

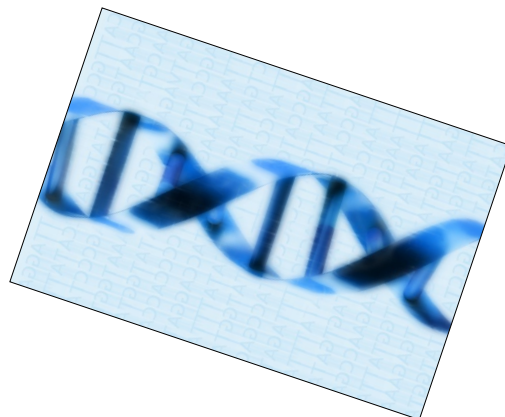
3:30-4:30pm    **Basic**    | contact hour

**Fetal Development of Fingerprints**

The presentation will be centered on the Fingerprint Section of the Rhode Island State Crime Lab. Topics to be discussed include: Fetal development of friction ridge skin, Genetics vs. Biological Uniqueness of the Friction Skin, Development of Friction Ridge Skin Impressions (Fingerprints) left at crime scenes and comparison of those impressions to Known Exemplars.

**Mark Zabinski**

Criminalist II  
Rhode Island State Crime Laboratory  
Kingston, RI



# Tuesday April 29, 2014

## MICROBIOLOGY

10:00-11:00am      **Basic**      | contact hour

### **An Xpert Solution to Molecular Diagnostics**

We will review PCR basics, and go over nucleic acid amplification/detection systems utilized by automated instruments. We will also give some examples of current NAAT instrumentation technology, including viral testing using NAAT, and bacterial testing using NAAT. Also, we will discuss genomics and its importance in the medical diagnostics industry, including the genetic code and SNPs.

**Andrea Pierce, PhD, C(ASCP)**

Sr. Field Application Specialist  
Cepheid  
Sunnyvale, CA

*Sponsored by Cepheid*

11:15am-12:15pm      **Intermediate**      | contact hour

### **Antimicrobial Threats**

Resistance to antimicrobial agents is increasing. This session will describe the current threat level, the leading hazardous microorganisms and approaches to remediation of this serious problem.

**James T. Griffith, PhD, CLS(NCA)**

Chancellor Professor  
University of Massachusetts-Dartmouth  
Dartmouth, MA

## MICROBIOLOGY

2:00-3:00pm      **Basic**      | contact hour

### **Acute Gastroenteritis in the Era of Rotavirus Vaccine**

With the use of rotavirus vaccine, the epidemiology of acute gastroenteritis in children has changed dramatically. This lecture will review current epidemiology and available diagnostics for use in the child presenting with gastroenteritis.

**Penelope H. Dennehy, MD**

Director, Division of Pediatric Infectious Diseases  
Hasbro Children's Hospital  
Professor of Pediatrics  
Alpert Medical School of Brown University  
Providence, RI

3:30-4:30pm      **Intermediate**      | contact hour

### **WASP Automation & Lean Processes in the Microbiology Laboratory**

The speaker will discuss establishing Lean Principles via WASP automation and WASP lab, MicroScan Instrumentation, and LabPro Connect as best laboratory practice.

**Richard K. Eckler Sr., MS**

Sr. Technical Application Specialist  
Siemens Healthcare Diagnostics  
Tarrytown, NY

*Sponsored by Siemens Healthcare Diagnostics*

\*\*\*\*\*ASCLS-CNE\*\*\*\*\*

**Annual Business Meeting**

**Tuesday, April 29, 2014**

**4:30pm**

**All are invited to attend!!**

**This is your opportunity to get involved with ASCLS**

Proudly serving hospitals and patients throughout  
New England

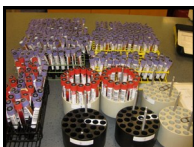
# Rhode Island Blood Center

**The Rhode Island Blood Center Mission: To provide a safe, adequate and cost effective blood supply for the patients and hospitals we serve.**



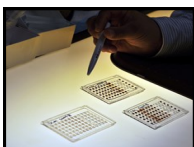
**401-453-8368**

Hospital Services for all your component needs



**401-248-5704**

Client Supervisor for Donor Testing services



ASHI accredited HLA/DNA testing services **401-248-5728**  
AABB IRL Laboratory: **401-453-8365**



**401-453-8566**

Patient and Cellular Therapy services

Visit us at [www.ribc.org](http://www.ribc.org) or call **1-800-283-8385** for more information

# Wednesday April 30, 2014

8:30am-3:00pm Registration  
11:00am-11:30am Coffee Break  
12:30pm-2:00pm Lunch break (separate fee for lunch required)  
*Wednesday luncheon session*  
**Food as Medicine**  
3:00pm-3:30pm coffee break  
4:30pm-5:30pm **VENDOR RECEPTION** —All attendees are welcome!

## MANAGEMENT

## MANAGEMENT

10:00am-12:30pm **Intermediate** 2 contact hours

### **Improved Patient Outcomes, Enhanced Value and Millions of Dollar in Savings by Leveraging Technology**

Operational efficiencies, best practices and technology combine to create the perfect synergy for improving patient outcomes, enhancing quality of care and saving millions of dollars. This session will present Mather Hospital's experience with laboratory growth, implementation of technology and meaningful performance metrics that demonstrate the added value of the laboratory.

#### **Donna Uetwiller-Geiger, PhD, DLM(ASCP)**

Director of Laboratory Services & Clinical Trials  
John T. Mather Memorial Hospital  
Port Jefferson, NY

*Sponsored by Beckman Coulter*

2:00-4:30pm **Basic** 2 contact hours

### **Electronic Document Management: "It's Not Easy to go Paperless, But the Staff is Happy and Inspectors are Impressed!"**

This session will provide an instructive and illuminating real world example of a lab's process in converting from paper-based to paperless document control and QM systems; lessons which others can apply to their own laboratories.

#### **Cynthia Mansfield, BS, MT(ASCP)**

Associate Director of Compliance and Operations  
Massachusetts General Hospital  
Boston, MA

*Sponsored by CLMA*

## WEDNESDAY LUNCHEON

**Intermediate**

1 contact hour

### **Food as Medicine**

We make food choices everyday and the food that you select will impact your health. This talk will cover some of the risk factors for chronic diseases that are affected by what we eat. It will provide practical information on what you can eat to decrease your risk factors for chronic disease and improve your overall health and body weight.

#### **Mary M. Flynn, PhD, RD, LDN**

Associate Professor of Medicine, Clinical, Brown University  
Research Dietician, The Miriam Hospital  
Providence, RI

## CHEMISTRY

10:00-11:00am Intermediate 1 contact hour

### Design Considerations for New Assays: Vitamin D and AMH

The session will discuss design elements considered for new assays including standardization, equimolarity, assay measuring range, analyte specificity, and more. Examples will be highlighted from current development products.

**Vernon Mustoe, PhD**  
Medical Affairs Manager  
Beckman Coulter, Inc.  
Brea, CA

*Sponsored by Beckman Coulter*

11:30am-12:30pm Intermediate 1 contact hour

### Understanding Colorectal Cancer: Clinical Presentation, Diagnosis & Staging

Colorectal cancer is a common disease that affect 140,000 individuals annually. The incidence and mortality has declined over the past 3 decades largely due to increased screening. The session will review the role of fecal occult blood testing and other screening options that can help prevent colon cancer.

**Vernon L. Mustoe, PhD**  
Medical Affairs Manager  
Beckman Coulter, Inc  
Brea, CA

*Sponsored by Beckman Coulter*

## CHEMISTRY

2:00-4:30pm Intermediate 2 contact hours

### Innovative Capillary Separation Methods for the Clinical Laboratories

Principles of capillary separation will be described and applied for use with diagnosis and/or monitoring of diabetes, plasma cell dyscrasias, and hemoglobin disorders. Interesting case studies will be presented to demonstrate the clinical and analytical significance of capillary separation as a new technique in the laboratory.

**Vincent Ricchiuti, PhD**  
Director, Clinical Chemistry and Toxicology  
University of Cincinnati Medical Center  
Cincinnati, OH

*Sponsored by SEBIA, Inc.*





## MICROBIOLOGY

10:00-11:00am      **Intermediate**      | contact hour

### **Implementing Rapid Microbiology Testing to Improve Patient Outcomes**

This presentation will review the different types of new rapid microbiology tests available on the market and describe examples of where improved patient outcomes have been demonstrated in different clinical care settings.

**Kent Lewandrowski, MD**  
Director of Laboratories  
Massachusetts General Hospital  
Professor of Pathology  
Harvard Medical School  
Boston, MA  
*Sponsored by Quidel*

11:30am-12:30pm      **Basic**      | contact hour

### **Chlamydia & Gonorrhea: Reducing the Barriers for Testing**

With 1.2 million cases of Chlamydia and 300,000 cases of Gonorrhea reported annually, it is important for clinical labs to test for these infections accurately and efficiently. Join our discussion to learn more about how your lab can reduce barriers for testing.

**Angela MacIntyre, PhD**  
Molecular Clinical Specialist  
Roche Diagnostics  
Indianapolis, IN

*Sponsored by Roche Diagnostics*

## MICROBIOLOGY

2:00-3:00pm      **Basic**      | contact hour

### **The Promise & Challenges of Syndromic Panels for Infectious Disease Testing**

Multiplex molecular tests have become available to aid in the diagnosis of various infectious disease syndromes. These tests can be more or less comprehensive than traditional methodologies and may provide results that are significantly different from those clinicians are accustomed to receiving. They also present challenges from a regulatory perspective.

**Kevin Bourzac, PhD**  
Clinical Research Scientist  
BioFire Diagnostics  
Salt Lake City, UT

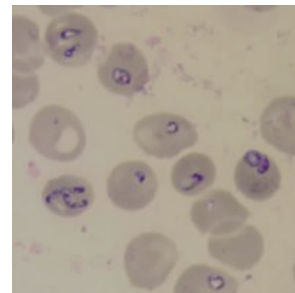
*Sponsored by BioFire Diagnostics*

3:30-4:30pm      **Basic**      | contact hour

### **Babesiosis: What's in Your Red Blood Cell?**

This presentation will discuss the life cycle of the organism, epidemiology of Babesiosis, laboratory diagnosis including microscopic, antibody detection, and molecular diagnostic procedures, and management of the disease.

**Caterina M. Miraglia, DC., MT(ASCP)<sup>cm</sup>**  
Full-time Lecturer  
University of Massachusetts-Dartmouth  
Dartmouth, MA



# Wednesday April 30, 2014

## WORKSHOP #2 Leukemia Workshop

\*9:00am to 4:30pm

Note Start Time

(6 hours)

**Full day workshop**

### THE WHO: Who's Who of Leukemia and Lymphoma

Back by popular demand, this workshop will venture into the world of leukemias and lymphomas as profiled by the World Health Organization (WHO). We will explore this broad group of diseases affecting the blood, bone marrow and lymphoid systems by taking a step-by-step approach, looking at clinical presentation, key morphological features, immunophenotypical and the cytogenetic footprints of these hematological neoplasms. A summary of each case will be correlated with a diagnosis, prevalence, prognosis and implication to therapy as outlined by the WHO 2008.

**Karen A. Ferreira, MS, MLS(ASCP)**  
Associate Scientific Director, Hematology  
**Marco A. Parada, MLS(ASCP)**  
**Allison Malo, MLS(ASCP)**  
Special Hematology Laboratory  
Lifespan Academic Medical Center  
Providence, RI



Images from  
ASCLS-CNE  
2013 Annual Convention



# Wednesday April 30, 2014

## TRANSFUSION MEDICINE

10:00-11:00am      **Intermediate**      | contact hour

### **Patient Blood Management: The Rhode Island Experience**

This presentation will outline approaches to blood management in Rhode Island and the measured outcome of intervention.

**Joseph Sweeney, MD, FACP, FRCPath**  
Director, Coagulation and Transfusion Medicine  
Brown University  
Providence, RI

*Sponsored by Haemonetics*

11:30am-12:30pm      **Intermediate**      | contact hour

### **Hemotherapy Bedside Vigilance: Case Studies and Lessons Learned**

Hemotherapy (HT) associated adverse sequelae can contribute to patient morbidity and mortality. Multidisciplinary approaches involving bedside caregivers and laboratory staff are of value in decreasing such occurrences. Using case studies, this presentation will explore various strategies taken by one healthcare system to mitigate adverse HT occurrences.

**Chester Andrzejewski, PhD, MD**  
Medical Director of System Transfusion/  
Apheresis Medicine Services  
Bay State Health  
Springfield, MA

## TRANSFUSION MEDICINE

2:00-3:00pm      **Intermediate**      | contact hour

### **Octaplas- A Pooled, S/D Treated Human Plasma for Transfusion**

The focus on this presentation will be on the clinical indications of Octaplas. Discussion will include how it is manufactured, what the biochemical profile looks like, the positive aspect of a cell filtration step as well as which kind of pathogen inactivation methodology is used and if there is a risk at all of pathogen transmission by blood and blood derivatives.

**Andrea Neisser-Svae, MSc, PhD**  
Vice President Scientific & Medical Affairs, ICEM  
Octapharma, Inc.  
Hoboken, NJ

*Sponsored by Octapharma*

3:30-4:30pm      **Intermediate**      | contact hour

### **Who Gets Allergic Transfusion Reactions & Why**

Allergic reactions can occur with all types of transfusion, but little is known as to what the risk factors and causes are. This talk will review what is known about these ubiquitous complications of transfusion.

**William Savage, MD, PhD**  
Associate Medical Director  
Brigham and Women's Hospital  
Boston, MA



# Wednesday April 30, 2014

## HEMATOLOGY

10:00-11:00am      **Intermediate**      | contact hour

### Clinical Solutions Using Automated Urinalysis

This sessions will provide an overview of the Iris automated urinalysis providing the audience with detail understanding and utilities and performance of Iris products. Discussion will also include clinical studies and statistics showing the improved benefits of automated urinalysis.

**Greg Scott, BS, MBA**  
Clinical Staff Scientist  
Beckman Coulter  
Chatsworth, CA

*Sponsored by Beckman Coulter*

11:30am-12:30pm      **Intermediate**      | contact hour

### Test I Technology and Automated ESR

An overview of the Test I technology and family of instruments will provide the audience with detail understanding of utilities and performance of fully automated ESR instrumentation. Discussion will also include clinical studies and statistics showing the improved benefits of the Test I technology.

**Greg Scott, BS, MBA**  
Clinical Staff Scientist  
Beckman Coulter  
Chatsworth, CA

*Sponsored by Beckman Coulter*

## HEMATOLOGY

2:00-3:00pm      **Intermediate**      | contact hour

### Update of Molecular Genetics of Myeloproliferative Neoplasms

The myeloproliferative neoplasms (MPN's) are a group of clonal stem cells disorders characterized by increased proliferation of one or more cell lines. In recent years, the research and utilization of molecular markers have been paving the way for a better understanding of the MPNs for pathophysiology, classification, prognosis and treatment.

**Kathleen Finnegan, MS, MT(ASCP)SH<sup>cm</sup>**  
Clinical Associate Professor  
Stony Brook University  
Stony Brook, NY

3:30-4:30pm      **Intermediate**      | contact hour

### Challenging Cases in Hematology

A case study format will be used to present challenging and unusual morphologic hematology cases. The case study will correlate clinical data, CBC results, peripheral blood findings and flow cytometry data with patient diagnosis. Discussion will include the FAB classification and the WHO classification of leukemia, and myelodysplastic syndromes. In addition, review and discussion of disease entities will be included.

**Kathleen Finnegan, MS, MT(ASCP)SH<sup>cm</sup>**  
Clinical Associate Professor  
Stony Brook University  
Stony Brook, NY

**4:30pm to 5:30pm**

**Vendor Reception & Social  
Exhibit Hall**

**ALL ATTENDEES ARE WELCOME**  
**Please join your colleagues for this social hour!**

# Wednesday April 30, 2014

## HISTOLOGY

10:00-11:00am      **Basic**      | contact hour

### Digital Imaging in Histopathology

This presentation discusses the new and emerging concepts for digital imaging in histology. Quantitative digital methods are becoming more common in histology, and may be used for event-counting or size measurements. Quantitation, reporting and whole slide imaging will be discussed as examples of rapidly evolving digital histology.

#### **Douglas C. Anthony, MD, PhD**

Professor of Pathology & Laboratory Medicine  
Brown University  
Pathologist-in-Chief  
Lifespan Academic Medical Center  
Providence, RI

11:30am-12:30pm      **Intermediate**      | contact hour

### Troubleshooting Processes in the Histology Laboratory: The Decidedly Scientific Side of Histology

Let's take this opportunity to open a dialogue about troubleshooting processes in the Histology Laboratory. We will focus on the use of the scientific method to develop and run experiments to solve common problems as well as to tweak existing protocols to generate a better quality slide for microscopic examination.

#### **Linda Agee Suarez, BS, HTL(ASCP)**

Senior Research Associate  
Genzyme, A Sanofi Company  
Framingham, MA

**Sponsored by Genzyme**

## HISTOLOGY

2:00-3:00pm      **Intermediate**      | contact hour

### Applying Best Practices for Lab Quality Assurance, Peer Review, Equipment Management, Specimen Verification & Tracking and Personnel Evaluations

"Quality" has different meanings to different people. Within the lab, improving quality can affect many aspects of laboratory process with tangible benefits throughout the laboratory ecosystem. For purposes of this discussion, quality means improving the pathology process in terms of staff, operational processes and the supporting environment while maintaining CAP and TJC compliance.

#### **Philip Abrams**

EVP  
AccuCore Group, LLC  
Newtown, PA

3:30-4:30pm      **Intermediate**      | contact hour

### Fundamentals Techniques and Theories of In Situ Hybridization with a Comparison to Immunohistochemistry

In Situ hybridization (ISH) is a diagnostic technique currently used in molecular laboratories. In recent years, this ISH technique has been migrating more towards the anatomical pathology laboratories. This migration is largely due to the use of ISH on FFPE tissue for detecting over expression of genes and virus, along with new easy to use probes and detection systems. ISH has also been popularized by the use of the combination of FDA approved in-situ hybridization and Immunohistochemistry detection systems to determine the proper diagnosis and treatment for the patient.

The Immunohistochemistry technologists, who deal with detecting proteins in tissue, may be unfamiliar with the molecular processes and the techniques used in detecting molecular elements in the tissues. With a little molecular knowledge, any technologist will find that In Situ Hybridization is similar to doing Immunohistochemistry.

#### **Paulette Stelmach, MT(ASCP)**

**Alan Maziarz**

**Sponsored by Dako**

## MOLECULAR DIAGNOSTICS

10:00-11:00am **Intermediate** | contact hour

### Clinical Applications of Pharmacogenetics

Current clinical applications of pharmacogenetics (pharmacogenomics) on drug treatment of both neoplastic and non-neoplastic disorders

**Mai He, MD, PhD**

Women & Infants Hospital  
Alpert Medical School of Brown University  
Providence, RI



11:30am-12:30pm **Basic** | contact hour

### Next Generation Sequencing: Clinical Applications

Next generation sequencing is being rapidly adopted in the clinical laboratory. This presentation will describe the different technologies available and how they differ from traditional sequencing. Clinical applications will be described in the areas of genetics, hematology and oncology.

**Cynthia Jackson, PhD**

Director of Clinical Molecular Biology  
Rhode Island Hospital  
Warren Alpert School of Medicine at Brown  
Providence, RI

## MOLECULAR DIAGNOSTICS

2:00-3:00pm **Intermediate** | contact hour

### From Chromosomes to Microarrays: Recent Advances in Cytogenomics

Starting with chromosomes at approximately 10MB resolution, during the last decade, with the advent of microarray technology, it is now possible to detect sub-microscopic changes in DNA at a few KB resolution. The presentation will include a brief description of the technology and discussion of abnormal cases.

**Umadevi Tantravahi, PhD**

Director, Associate Professor  
Women & Infants Hospital  
Brown University  
Providence, RI

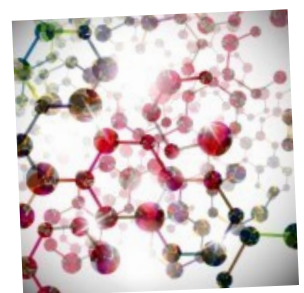
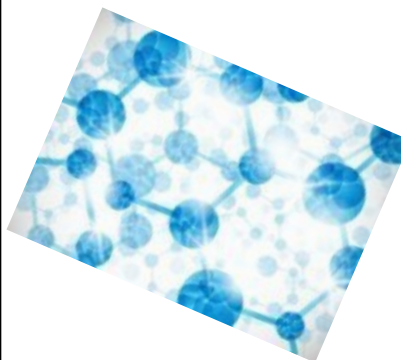
3:30-4:30pm **Intermediate** | contact hour

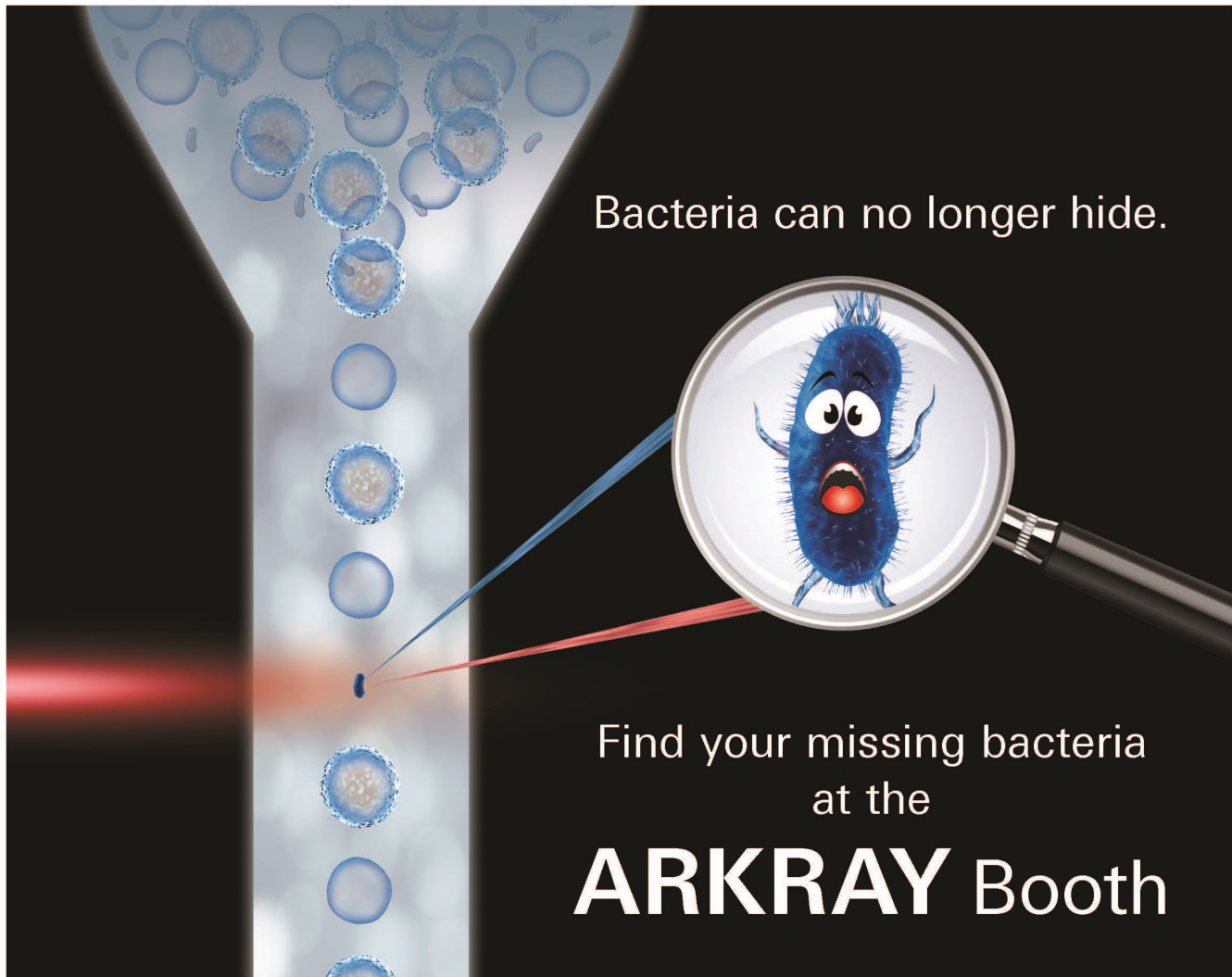
### Clinical Applications of Nucleic Acid Testing

This session will provide an overlook of the clinical applications of nucleic acid amplification. Participants will develop a broad concept of the several techniques used to amplify DNA and will have a general idea of the different assays used in the clinical setting.

**Massimo Mangiola, PhD**

Director, Special Services  
Rhode Island Blood Center  
Providence, RI





FULLY-AUTOMATED INTEGRATED URINE ANALYZER  
**AUTION HYBRID™**  
AU-4050



← 31.5" → **The SMALLEST FOOTPRINT in the market.**

**Be confident you will find the smallest bacteria.**

The AUTION HYBRID™ AU-4050 is a fully automated urine chemistry and sediment analyzer that offers a high level of bacteria detection. It utilizes flow cytometry technology with proprietary immunofluorescent dye and bi-directional laser detection to separately and directly detect and enumerate bacteria. The high specificity and sensitivity provides exact quantifiable results and reduces tech-to-tech subjectivity.

You deserve accurate and precise information to treat your patients.  
corelab@arkrayusa.com • 877.538.8872 • www.arkraylab.com/aution4050

# Thursday, May 1, 2014

8:30am-3:00pm Registration  
11:00am-11:30am Coffee Break  
12:30pm-2:00pm Lunch break (separate fee for lunch required)  
(Thursday luncheon session)  
**Laboratory Acquired Infections**  
3:00pm-3:30pm coffee break

## TRANSFUSION MEDICINE

10:00-11:00am **Intermediate** | contact hour

### **Managing Post-Donation Information and Assessing Transfusion Risk**

Each year, blood centers report over 30,000 biological product deviations related to post-donation information to the FDA. Post-donation information often leads to market withdrawal or recall of blood components, generating concern about risk to patients and the need for notification or additional testing. This session will examine the actual transfusion risk associated with the most common issues reported as post-donation information.

**Anne Eder, MD, PhD**  
Executive Medical Officer  
American Red Cross  
Rockville, MD

*Sponsored by American Red Cross*

11:30am-12:30pm **Intermediate** | contact hour

### **New Frontier in Blood Banking: Will Molecular Genotyping Replace Red Cell Phenotyping?**

Molecular testing has made its way into several areas of the clinical laboratory. In the blood bank, it has potential use in preventing allo-immunization through matching of donor and recipient red cells. In addition, it has opened up new insights in unraveling the complexity of certain blood group antigen systems.

**Ufie Asu, M.Sc**  
Product Manager  
**Barb Pumphrey, MT(ASCP)SBB**  
Blood Bank Specialist  
Bio-Rad Laboratories  
Hercules, CA

*Sponsored by Bio-Rad Laboratories*

## TRANSFUSION MEDICINE

2:00-3:00pm **Intermediate** | contact hour

### **Using Self Assessments to Avoid Disappointing External Assessment Outcomes**

Internal assessments or audits are required by most accrediting agencies. Yet the same deficiencies are cited again and again by inspectors. Learn how to use your self-assessments as a tool for improving compliance and performance. This topic is applicable not only to blood bankers but to any laboratory section looking to achieve flawless compliance.

**Melanie Champion, MBA, MT(ASCP)SBB**  
Lab Manager, Blood Bank  
Yale New Haven Hospital  
New Haven, CT

3:30-4:30pm **Intermediate** | contact hour

### **Transfusion Medicine Case Studies- Medical, Legal and Tissue Issues**

The program will address medical legal issues in transfusion including market withdrawals and how they impact patient care. The role of risk management and the Transfusion Tissue Safety Officer will be addressed. Four case studies (interactive) will be presented using blood and tissue problem scenarios.

**Edward L. Snyder, MD**  
Professor, Laboratory Medicine  
Blood Bank Director  
Yale University Medical School  
Yale New Haven Hospital  
New Haven, CT



# Thursday, May 1, 2014

## CHEMISTRY

10:00-11:00am **Basic** 1 contact hour

### **Celiac Serology or GI Biopsy: What Would You Prefer?**

Celiac Disease has been a frequent topic in the media. Is it just a “trendy disease?” In this seminar we will discuss the basics of Celiac Disease and the development of various diagnostic methods and testing principles. We will also examine the pros and cons of each method and their significance.

**Paulina Leung-Lee, BS, MBA**

Sr. Sales Product Manager  
Bio-Rad Laboratories  
Benicia, CA

*Sponsored by Bio-Rad*

11:30am-12:30pm **Intermediate** 1 contact hour

### **APS Testing by the Numbers: New Approaches to Generating Results**

Diagnostic criteria have been evolving for Antiphospholipid Syndrome (APS) in the past few decades. The seminar will start with an overview of APS, followed by the discussion in the development of different diagnostic methods and criteria.

**Paulina Leung-Lee, BS, MBA**

Sr. Sales Product Manager  
Bio-Rad Laboratories  
Benicia, CA

*Sponsored by Bio-Rad*

## CHEMISTRY

2:00-4:30pm **Basic** 2 contact hours

### **QC: The Ugly, The Bad and the (We Hope) Good**

While instrumentation has advanced dramatically in the past decades, Quality Control, seems mired in old traditions. In this session, we will uncover bad habits that have accumulated over the last half century and identify new techniques to redesign our QC operations. The goal: Bring QC into the 21st century.

**Sten Westgard, MS**

Director, Client Services & Technology  
Westgard QC, Inc.  
Madison, WI

*Sponsored by Abbott Diagnostics*



## THURSDAY LUNCHEON

**Intermediate**

1 contact hour

### **Laboratory Acquired Infections: What's Bugging You??**

Laboratory Acquired Infections (LAI) may be the least discussed and under reported event when dealing with infectious diseases. The truth is no one knows that actual rate of laboratory acquired infections. With no national system for reporting medical laboratory exposures and infections that may result, do we know that our efforts in biosafety re effective? This presentation will focus on the five most predominant routes of LAIs. Historical examples will be used to identify breaches in safety protocols.

**Rick Danforth, SM(ASCP)**

Laboratory Program Advisor  
Maine Health and Environmental Testing Laboratory  
Augusta, ME

## CYTOLOGY

10:00-11:00am      **Basic**      | contact hour

### HPV Clinical Decision Making: Your Role as a Laboratorian

Your HPV test, and its performance, is of critical importance given the fact that its associated with pre-cancer and cancer in women. Come explore how researchers, physicians and patients have come to rely on laboratorians to provide accurate HPV results.

**Angela MacIntyre, PhD**  
Molecular Clinical Specialist  
Roche Diagnostics  
Indianapolis, IN

*Sponsored by Roche Diagnostics*

11:30am-12:30pm      **Intermediate**      | contact hour

### Enhanced Cytology Delivered by Molecular Diagnostics

The presentation will focus on up-to-date molecular techniques that can either enhance the diagnostic accuracy of cytopathology evaluation or provide additional information for biological therapies.

**Zoltan Nagymanyoki, MD, PhD**  
Cytopathology Fellow  
Brigham & Women's Hospital  
Boston, MA



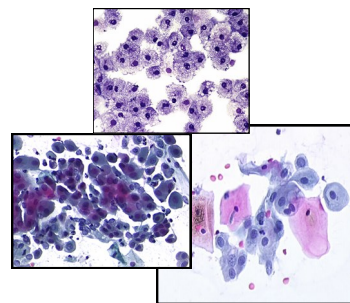
## CYTOLOGY

2:00-3:00pm      **Intermediate**      | contact hour

### Salivary Gland Fine Needle Aspiration

This presentation will provide a background in the diagnostic utility of salivary gland fine needle aspiration. It will highlight cytomorphologic interpretation of benign and malignant salivary gland processes, emphasizing categorization of salivary gland tumors. The limitations and pitfalls of salivary gland fine needle aspiration cytology will be discussed.

**Darcy A. Kerr, MD**  
Cytopathology Fellow  
Massachusetts General Hospital  
Boston, MA



3:30-4:30pm      **Intermediate**      | contact hour

### Body Fluids: A Case Based Tour

This session is a case-based review of major body fluid specimens received by cytology and the clinical laboratory: urine, ascites, pleural fluid, CSF, sputum and pericardial fluid. Cases will be used to discuss not only cytomorphology, but also common areas of diagnostic difficulty and the appropriate use of additional testing.

**Roseann I. Wu, MD, MPH, FCAP**  
Cytopathology Fellow  
Massachusetts General Hospital  
Boston, MA

## HEMATOLOGY

10:00am-12:30pm **Intermediate** 2 contact hours

### **Anticoagulation: The Laboratory's Role Now & in the Future**

Have you wondered about the impact of traditional and new oral anticoagulants on coagulation tests? With the current state of the evolving anticoagulant market, this presentation discusses the laboratory's role in testing and will include the role of the laboratory in patient care for monitoring and assessing these drugs.

**Paul Riley, PhD**  
Manager, Research Use Products  
**Jaime Serpe, MLS(ASCP)<sup>cm</sup>**  
Product Manager, Reagents  
Diagnostics Stago  
Parsippany, NJ

*Sponsored by Diagnostica Stago*

2:00-3:00pm **Basic** 1 contact hour

### **Cell Image Atlas: Application to the Hematology Lab**

This session will consist of an overview of Digital Cell Image Analysis and its application to the Hematology Laboratory. The session will also include case studies from Digital Cell Imaging.

**Carl Trippiedi**  
Senior Product Manager  
Hematology & Cell Image Analysis  
Sysmex America, Inc  
Lincolnshire, IL

*Sponsored by Sysmex*

3:30-4:30pm **Advanced** 1 contact hour

### **The Evolving Role of Reticulated Platelets**

The role of reticulated platelets in platelet disorders has been widely researched for a number of years. Advances in automation have allowed the clinical laboratory to provide this data in a more cost-efficient and timely manner. Understanding the impact of this parameter to clinical practice is critical to successful implementation.

**Kyle Riding, PhD, MLS(ASCP)<sup>cm</sup>**  
Program Director  
Quincy College  
Quincy, MA

*Sponsored by Sysmex*

## MANAGEMENT

10:00am-12:30pm **Intermediate** 2 contact hours

### **Baby Boomers, GenX and Gen Y: Oh My!!**

For the first time in history, we have three distinct generations working together in the same workplace. This fast paced, fun-filled presentation will challenge our assumptions about the generations and give us new ways to connect in the workplace and at home.

**Jeff Smith, MA, PCC**  
CEO  
Voltage Leadership Consulting  
Roanoke, VA

*Sponsored by Roche Diagnostics*

2:00-4:30pm **Intermediate** 2 contact hours

### **College of American Pathologists Laboratory Accreditation Program**

The presentation will provide an overview of the College of American Pathologists (CAP) Laboratory Accreditation Program (LAP) today along with specifics for the audience related to the Lab General and All Common LAP checklists used as part of the on-site laboratory inspection process.

**Noubar Kessimian, MD, FCAP**  
Vice-chair, Dept. of Pathology & Laboratory Medicine  
The Warren Alpert Medical School, Brown University  
Pathologist-in-Chief & Director of Laboratories  
Memorial Hospital of RI/Care New England  
State Commissioner of RI-CAP

*Sponsored by College of American Pathologists*



# Thursday, May 1, 2014

## PUBLIC HEALTH

10:00am-12:30pm **Intermediate** 2 contact hours

### **Norovirus: A Rhode Island Perspective**

Join us for an in-depth look at Rhode Island's seasonal Norovirus outbreaks, including presentations from the Rhode Island State Health Laboratory and the Rhode Island Department of Health's Division of Infectious Disease and Epidemiology. Topics to be addressed include: identifying signs and symptoms of Norovirus, implementing infection control measures, detecting Norovirus by RT-PCR assay, pyrosequencing to obtain strain information, describing seasonal trends, data interpretation and reporting outbreak and lab data to the CDC.

#### **Deanna Simmons, MS, MT**

Supervisor, Molecular Biology/Enteric Pathogens/MCAP Lab

#### **Mark Gosciminski, MPH, MT**

Public Health Epidemiologist  
Rhode Island Department of Health  
Providence, RI

2:00-4:30pm **Basic** 2 contact hours

### **2014 Update on Vitamins for Eye, Heart and General Health: What Does the Evidence Tell Us?**

This presentation will focus on evidence from recent studies evaluating the risks and benefits with vitamins, both in combination and as single products for "eye health" and "heart health", as well as for general health maintenance and disease prevention. Current controversies will be discussed.

#### **Anne L. Hume, Pharm D, FCCP, BCPS**

Professor of Pharmacy  
University of Rhode Island  
Kingston, RI

## MICROBIOLOGY

10:00am-12:30pm **Intermediate** 2 contact hours

### **A Review of Multi-Drug Resistant Organisms (MDROs), Treatment Options and Prevention Considerations**

This presentation will discuss the different multi-drug resistant organisms: MRSA, VRE, ESBLs, KPCs and MDR\_GNRs. The treatment option for each organism will be reviewed in a patient case format. Mechanisms for the prevention of antimicrobial resistance will also be reviewed.

#### **Martha J. Roberts, PharmD**

Lead Clinical Care Pharmacist/Critical Care Specialist  
St. Joseph Health Services of RI  
North Providence, RI

2:00-4:30pm **Intermediate** 2 contact hours

### **The Gram Stain: The Best Tool in the Tool Box**

This session will discuss the importance of the gram stain in Clinical Microbiology. The past, present and future of this important test will be covered. Problems encountered in preparation, staining and reading gram stains will be included along with Quality Control and Quality Assurance suggestions.

#### **Edward J. Sklut, MS, M(ASCP), CLS(M)**

Microbiology Supervisor  
East Bridgewater, MA



# ASCLS-CNE 66th ANNUAL CONVENTION

## Sponsors and Exhibitors

Our thanks to all for supporting the ASCLS-CNE 66th Annual Convention. As one of the oldest and largest professional organizations in the region, ASCLS-CNE has a long history of excellence in providing continuing education for laboratory professionals. This is due, in part, to the generous support of our exhibitors and convention sponsors.

Please visit the Exhibit Hall on Tuesday, Wednesday AND Thursday

Exhibits will be open:

**Tuesday, 4/29- 12:00pm-5:00pm**

**Wednesday, 4/30- 9:00am -5:30pm**

**Thursday, 5/1- 9:00am-3:30**

**Exhibitor Move-Out: Thursday, May 1, 2014 at 3:30pm**

In addition, ASCLS-CNE will host a

## **VENDOR RECEPTION**

Wednesday, April 30<sup>th</sup> from 4:30 to 5:30pm

The following is a partial list of current and previous Convention sponsors.

**Abbott Diagnostics**

**Abbott Point of Care**

**Accucore Group**

**Advanced Instruments, Inc.**

**Alcor Scientific Inc.**

**Alere North America**

**ARKRAY**

**ARUP Laboratories**

**Audit MicroControl, Inc**

**Becton Dickinson**

**BD Biosciences**

**Beckman Coulter**

**The Binding Site, Inc**

**BioMerieux**

**Bio-Rad Laboratories, Inc**

**Cardinal Healthcare**

**Cepheid**

**CSL Behring**

**Diagnostica Stago Inc**

**DiaSorin, Inc.**

**Eurotrol**

**Fisher Healthcare**

**Global Focus Marketing**

**Helmer**

**HemoBioscience**

**Hemocue, Inc.**

**Hettich Instruments**

**Higgins Corporation**

**Hologic**

**Horiba Medical**

**HTI Medical**

**Immucor**

**Instrumentation Laboratory**

**JAF Consulting**

**Mayo Medical Laboratories**

**MediaLab Inc**

**Meridian Bioscience, Inc.**

**MicroVideo Instruments Inc**

**Miller's Express**

**Novartis (Grifols)**

**Octapharma USA, Inc**

**Ortho Clinical Diagnostics**

**Puritan Medical Products**

**Qiagen**

**Quest Diagnostics**

**Rainbow Scientific Inc**

**Remel**

**Roche Diagnostic Corp & Hospital POC**

**Sebia Electrophoresis**

**SeraCare Life Sciences**

**Siemens Healthcare Diagnostics**

**Sysmex America, Inc.**

**TELCOR, Inc**

**Thermo Fisher Scientific**

**Trinity Biotech USA Inc.**

# ASCLS-CNE

would like to thank our generous sponsors  
for sponsoring our

Speakers  
Welcome Bags  
Vendor Reception & Social

## Coffee break sponsors

**CharterCARE**

**Health Partners-**

St. Joseph Health Services of RI  
Roger Williams Medical Center

**Beckman Coulter**

**Grifols**

**Sarstedt**

**DiaSorin**

**ALCOR**



Find us on  
**Facebook**

Find us on Facebook@facebook.com/asclscne





## ASCLS-CNE 66<sup>th</sup> ANNUAL CONVENTION

### DIRECTIONS TO THE RHODE ISLAND CONVENTION CENTER

**From the North:**

Interstate 95 South to Exit 22A. Follow the signs towards the Downtown/Convention Center. Go through the first light in the right hand lane. Take the first right after the light. Take the next right onto Exchange St. After the next light, bear right between the Hotel and the Convention Center to the North Garage.

**From the South:**

Interstate 95 North to Exit 22A. Follow the signs towards Downtown Convention Center. At the light, turn right onto Francis Street. At the next light, go right onto Sabin Street. Bear right between the Hotel and the Convention Center to the North Garage.

**From the East:**

Take I 95 West. Merge onto 95 North to Exit 22A. Follow the signs towards Downtown/Convention Center. At the light, turn right onto Francis Street. At the next light, go right onto Sabin Street. Bear right between the Hotel and the Convention Center to the North Garage.

**From the West:**

Take Route 6 to the "Route 6 East and I-295 South" ramp. Take a right and stay to the right following the signs to Providence and Route 6 East (you will use part of the I-295 on-ramp to get onto Route 6 East). Stay on Route 6 East to the end (sign will read "6 East to 10 North") and stay to the left. Continue to the Dean Street Exit. Once on the exit ramp, stay to the left so that you will be on the left side of the island when you reach the light. Turn left onto Dean Street (4 lane road). Then immediately take the first right onto West Exchange Street to the Convention Center Garage.

### Meeting Rooms

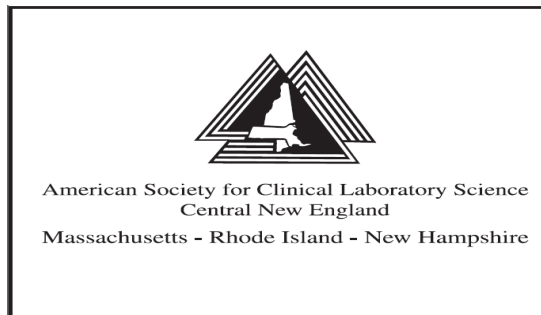
ASCLS-CNE Meeting Rooms are all located on the 5th Floor of the RI Convention Center. Watch for posted signs for session room assignments.

Park on Level 4 of the Convention Center Parking Lot. Walk to Convention Center/Westin Hotel Entrance. Take a right onto Convention Center Lobby/connector. Signs will be posted. Take escalators to the Fifth Floor. Registration is in the Prefunction Lobby on the 5th floor.

## Hotel Accommodations

Hotel accommodations are at the **Hilton-Providence**, located ONE block from the Rhode Island Convention Center. The special room rate is \$139.00/room/night. There is Hi Speed Wireless Internet Access in all guestrooms.

To make reservations, call 401-831-3900, or online at [www.providence.hilton.com](http://www.providence.hilton.com). Please indicate you are attending the ASCLS-CNE Annual Convention in order to receive the discounted rate. Reservations must be made by **April 1**.



ASCLS-CNE recognizes and values all Clinical Laboratory Professionals in Central New England, which is why I am reaching out to encourage you to join ASCLS today. During these difficult economic times, it is important to recognize what this professional organization is doing for you.

ASCLS and ASCLS-CNE goals continue to focus on:

- Developing leadership growth opportunities for our members
- Promoting the value of clinical laboratory professionals
- Increasing educational offerings to members to assist them in meeting their certification renewal requirements every 3 years
- Enhancing professional networking that allows easy access to information & professional opportunities
- Monitoring and acting on national regulations and government actions

Now more than ever, **WE NEED YOU**, so that our profession has a strong voice in healthcare reform and the changes it will bring. Without a strong presence, other healthcare professional organizations will be better awarded. ASCLS and ASCLS-CNE are working to create a future where Clinical Laboratory Science professionals are recognized and respected for their value to healthcare within their facilities and in their communities. We need to protect our future.

We know that continuing education is important to you. Please renew your membership today by going to our web site [www.ascls.org](http://www.ascls.org) and clicking on “Join ASCSL”! To help with your CE needs ASCLS is offering members 6 online quizzes at **no charge** simply to say thank you. More information on this offer will be sent to you upon your membership renewal or by going to our web site and clicking on “Member Renewal Thank You”. Active members receive special discounted rates at our Annual Clinical Laboratory Science Convention in Providence, RI as well as other local educational opportunities. In addition, new members will receive an additional 3 months of membership when joining prior to May 1 just in time to receive a discount on the Annual Convention.

If you have any questions or concerns that you would like answered before making your final decision, please feel free to contact me.

Respectfully,  
Leslie Martineau, ASCLS-CNE Membership Chair  
[lmartineau@chartercare.org](mailto:lmartineau@chartercare.org)



## **JOIN ASCLS TODAY!!**

**ASCLS and ASCLS-CNE** are working to create a future where Clinical Laboratory Science professionals are recognized and respected for their value to healthcare within their facilities and in their communities. ASCLS-CNE goals continue to focus on:

**Please visit:**

**[www.ascls.org](http://www.ascls.org)**

**To print a membership form**

**Or**

**Join online**

Please consider joining ASCLS today!

***Please visit us at the ASCLS-CNE  
Membership Booth***

# 2014 ASCLS-CNE Annual Convention

## Registration Information

Register online by visiting:  
[www.ascls-cne.org/annual-convention](http://www.ascls-cne.org/annual-convention)

**(Please read the information below before registering)**

**Membership Affiliation:** Membership discounts are given only to members of the sponsoring organizations listed below.

(NOTE: membership or certification by **ASCP** or **NCA** does NOT apply here.)

**\*\*YOU MUST INCLUDE MEMBERSHIP # TO BE ELIGIBLE FOR MEMBER RATES\*\***

**Membership rosters for the following organizations will be checked when registration is received and on site:**

American Association for Clinical Chemistry  
Bay State Chapter-Clinical Laboratory Management Association  
Northeast Branch American Society for Microbiology (NEB ASM),  
Rhode Island Cytology Association (RICA)  
Rhode Island Society for Histotechnology

---

### Directions for mail-in registration:

Please circle the appropriate fee for all sessions you plan to attend. Enter the total fee for each day in the column titled FEES PER DAY. ***Please remember to include separate fees for lunch if they apply. To register for a workshop, circle the appropriate fee for that workshop. Total all registration fees at the bottom of the form.***

---

**REGISTRATIONS received prior to April 26, 2014 include PARKING VOUCHERS. Late & walk-in registrants must park at their own expense.**

**DO NOT MAIL REGISTRATIONS AFTER April 26, 2014**

Bring them to the Convention. No refunds will be given after **April 26, 2014**

Receipts will be available at the meeting only.

## 2014 ASCLS-CNE ANNUAL CONVENTION REGISTRATION FORM

Last name: \_\_\_\_\_ First name: \_\_\_\_\_

Street address: \_\_\_\_\_

City: \_\_\_\_\_ State: \_\_\_\_\_ Zip: \_\_\_\_\_

Telephone#: (h) \_\_\_\_\_ (w) \_\_\_\_\_ RI CLS/CLT License# \_\_\_\_\_

Institutional (workplace) affiliation: \_\_\_\_\_ email: \_\_\_\_\_

**\*\*YOU MUST INCLUDE MEMBERSHIP # TO BE ELIGIBLE FOR MEMBER RATES\*\***

American Society for Clinical Laboratory Science (ASCLS) Membership #: \_\_\_\_\_  
 (Please check if member; rosters will be checked)

Member:  CLMA  RICA  NEB ASM  RISH  AACC

<b>ASCLS-CNE REGISTRATION</b>	<i>Member:</i> ASCLS, CLMA,RISH,RICA NEB ASM, AACC	Non- Member	Student Member	Student Non- member	FEES PER DAY
<b><u>Tuesday, April 29, 2014</u></b>					
Day Session (Luncheon Excluded)	\$70	\$100	\$25	\$30	
Luncheon Session (1 hr or .1 CEU)	\$25	\$25	\$25	\$25	
<b>Workshop #1– Bioterrorism</b>	\$100	\$150	\$75	\$80	
<b>Workshop #2– Basic Molecular Diagnostics</b>	\$100	\$150	\$75	\$80	
<b><u>Wednesday, April 30, 2014</u></b>					
Day Session (Luncheon Excluded)	\$70	\$100	\$25	\$30	
Luncheon Session (1 hr or .1 CEU)	\$25	\$25	\$25	\$25	
<b>Workshop #3– Leukemia</b>	\$100	\$150	\$75	\$80	
<b><u>Thursday, May 1, 2014</u></b>					
Day Session (Luncheon Excluded)	\$70	\$100	\$25	\$30	
Luncheon Session (1 hr or .1 CEU)	\$25	\$25	\$25	\$25	
<b>3-Day Registration (does not include workshops)</b>	\$190	\$280	\$60	\$75	
<b>3-Day lunch</b>	\$75	\$75	\$75	\$75	
				<b>TOTAL:</b>	

**Payment Information (CHECK ONE)**

Check or Money Order in the amount of \$ \_\_\_\_\_ (Make checks payable to: **ASCLS-CNE**)

Credit card:  VISA  
 MasterCard  
 American Express

Credit card number: \_\_\_\_\_ Expiration date: \_\_\_\_\_

Cardholder Name: \_\_\_\_\_

Cardholder Signature: \_\_\_\_\_

**Mail this completed registration form with appropriate payment (postmarked by April 26, 2014) to:**  
**Maddie Josephs**  
**43 Bourne Avenue**  
**Rumford, RI 02916**



**ASCLS-CNE 66<sup>th</sup> Clinical Laboratory Science Convention**  
**Tuesday, April 29, 2014**  
**Preliminary Schedule**

**Exhibits open at Noon**

	10:00am-11:00am / 11:15am-12:15pm		2:00pm-3:00pm/3:30pm-4:30pm	
	<i>*Workshop (9am-4:30pm)*</i>			
<b>Bioterrorism Workshop</b>	<b>What Every Health Professional Needs to Know About Bioterrorism</b> Edward Balkovic, PhD	<b>Designing Genome Derived Epitope Based Vaccines: H7N9 Case Study</b> Annie DeGroot, MD	<b>CAP Lab Preparedness Exercise (LPX)</b> Cindy Vanner	<b>Microbiology Lab Responsibilities under Federal Select Agent Program</b> Cindy Vanner
<b>Chemistry</b>	<b>New Definition of AMI</b> Brad Mayeux, MSN, RN <i>Sponsored by Roche</i>		<b>Primary Immunodeficiency: How to Diagnose Cellular Defects Which Lead to Disease</b> Richard M. O'Hara, Jr., PhD <i>Sponsored by The Binding Site</i>	
<b>Hematology</b>	<b>Changing Views on CLL</b> Susan Leclair, PhD, CLS(NCA)		<b>New Anticoagulants Rivaroxiban and Dabigatran</b> Elizabeth Van Cott, MD <i>Sponsored by CLMA</i>	<b>Clinical Utility of D-dimer Assay</b> Sally Pucci, MBA, SH(ASCP) <i>Sponsored by IL</i>
	<b>Lunch Speaker (12:30pm-2:00pm) Medical Marijuana- Cutler, Griffin, Reilly</b>			
<b>Transfusion Medicine</b>	<b>Controversies in Transfusion Therapy for Sickle Cell Disease</b> Anjulika Chawla, MD	<b>Management of Obstetrical Hemorrhage</b> Kerrie O'Brien, MD	<b>Massive Transfusions: Improving Patient Outcomes</b> Christopher Stowell, MD	<b>Wireless Environmental Monitoring</b> Joel Cook <i>Sponsored by Stanley</i>
	<i>*Workshop (9am-4:30pm)*</i>			
<b>The Evolution of Molecular Diagnostics: A Workshop</b>	<b>Theory and Application of Molecular Diagnostics in the Clinical Laboratory With Data Interpretation</b> Shashi Mehta, PhD Cynthia Jackson, PhD			
<b>Point of Care Testing</b>	<b>"Get out of the Basement": Our Role in Patient Centered Care</b> Stephanie Mihane, MLS		<b>POCT: An Evolving Approach to Patient Care</b> Jeffrey Dubois, PhD	
<b>Microbiology</b>	<b>An Xpert Solution to Molecular Diagnostics</b> Andrea Pierce, PhD <i>Sponsored by Cepheid</i>	<b>Antimicrobial Threats</b> James T. Griffith, PhD, CLS (NCA)	<b>Acute Gastroenteritis in the Era of Rotavirus Vaccine</b> Penelope H. Dennehy, MD	<b>WASP Automation</b> Richard Eckler, MS <i>Sponsored by Siemens</i>
<b>Forensic Science</b>	<b>It's A Hit" Why DNA Profiling &amp; Databasing are Useful</b> Karen M. Lynch, MS, MT (ASCP)	<b>CSI at URI: The Rhode Island State Crime Laboratory</b> Dennis Hilliard, MS	<b>Fundamentals of Forensic Toxicology</b> Laurie Ogilvie, MS, FTS-ABFT	<b>Fetal Development of Fingerprints/Friction Skin</b> Mark Zabinski

**ASCLS-CNE 66<sup>th</sup> Clinical Laboratory Science Convention**  
**Wednesday April 30, 2014**  
**Preliminary Schedule**

**Exhibits open all day**

	10:00am-11:00am / 11:30am-12:30pm		2:00pm-3:00pm/3:30pm-4:30pm	
<b>Microbiology</b>	<i>Rapid Microbiology Testing to Improve Patient Outcomes</i> Kent Lewandrowski, MD <i>Sponsored by Quidel</i>	<b>Chlamydia &amp; Gonorrhea: Reducing the Barriers for Testing</b> Angela MacIntyre, PhD <i>Sponsored by Roche</i>	<b>Promises &amp; Challenges of Syndromic Panels for Infectious Disease Testing</b> Kevin Bourzac, PhD <i>Sponsored by Biofire</i>	<b>Babesiosis: What's in Your Red Blood Cell</b> Caterina Miraglia, DC, MT(ASCP)
<b>Chemistry</b>	<b>Design Considerations for New Assays: Vitamin D &amp; AMH</b> Vernon Mustoe, PhD <i>Sponsored by Beckman</i>	<b>Understanding Colorectal Cancer: Clinical Presentation, Diagnosis &amp; Staging</b> Vernon Mustoe, PhD <i>Sponsored by Beckman</i>	<b>Innovative Capillary Separation Methods for the Clinical Laboratories</b> Vincent Ricchuiti, PhD <i>Sponsored by Sebia Inc.</i>	
*Workshop (9am-4:30pm)*				
<b>Leukemia Workshop</b>	<b>THE WHO: Who's Who of Leukemia and Lymphoma</b> Karen Ferreira, MS, MLS(ASCP)SH Marco Parada, MLS(ASCP) Allison Malo, MLS(ASCP)			
<b>Lunch Speaker (12:30pm-2:00pm)- Food as Medicine-</b> Mary Flynn, PhD				
<b>Transfusion Medicine</b>	<b>Patient Blood Management: The RI Experience</b> Joseph Sweeney, MD, FACP <i>Sponsored by Haemonetics</i>	<b>Hemotherapy Bedside Biovigilance</b> Chester Andrzejewski, MD, PhD	<b>Octaplas: A Pooled S/D Treated Human Plasma for Transfusion</b> Andrea Neisser-Svae, MSc. PhD <i>Sponsored by Octapharma</i>	<b>Who Gets Allergic Transfusion Reactions and Why</b> William Savage, MD, PhD
<b>Hematology</b>	<b>Clinical Solutions Using Automated Urinalysis</b> Greg Scott, BS, MBA <i>Sponsored by Beckman Coulter</i>	<b>Test I Technology &amp; Automated ESR</b> Greg Scott, BS, MBA <i>Sponsored by Beckman Coulter</i>	<b>Molecular Genetics of Myeloproliferative Neoplasms</b> Kathleen Finnegan, MS, MT (ASCP)SH	<b>Challenging Cases in Hematology</b> Kathleen Finnegan, MS, MT (ASCP)SH
<b>Management</b>	<b>Lab Automation</b> Denise Geiger, PhD, DLM(ASCP) <i>Sponsored by Beckman Coulter</i>		<b>Electronic Document Management</b> Cynthia Mansfield, BS, MT(ASCP) <i>Sponsored by CLMA</i>	
<b>Histology</b>	<b>Digital Imaging in Histopathology</b> Douglas C. Anthony, MD, PhD	<b>Troubleshooting in the Histology Lab: The Decidedly Scientific Side of Histology</b> Linda Agee Suarez, BS, HTL (ASCP) <i>Sponsored by Genzyme</i>	<b>Applying Best Practices for Lab Quality Assurance</b> Philip Abrams	<b>In Situ Hybridization Compared to Immunohistochemistry</b> Paulette Stelmach Alan Maziarz <i>Sponsored by Dako</i>
<b>Molecular Diagnostics</b>	<b>Clinical Applications of Pharmacogenomics</b> Mai He, MD, PhD	<b>Next Generation Sequencing: Clinical Applications</b> Cynthia Jackson, PhD	<b>Microarray Techniques: Clinical Applications</b> Uma Tantravahi, PhD	<b>Clinical Applications of Nucleic Acid Testing</b> Massimo Mangiola, PhD
<b>Vendor Reception</b> <b>4:30pm-5:30pm</b> <b>ALL ARE INVITED!!!</b>				



**ASCLS-CNE 66<sup>th</sup> Clinical Laboratory Science Convention**  
**Thursday, May 1, 2014**  
**Preliminary Schedule**

**Exhibits close at 3:30pm**

	10:00am-11:00am / 11:30am-12:30pm		2:00pm-3:00pm/3:15pm-4:15pm	
<b>Hematology</b>	<b>Anticoagulation:                      The Lab's Role Now &amp; in the Future</b> Paul Riley, PhD Jaime Serpa, MLS(ASCP) <i>Sponsored by Diagnostica Stago</i>		<b>Cell Image Analysis:                      Application to the                      Hematology Lab</b> Carl Trippiedi <i>Sponsored by Sysmex</i>	<b>The Evolving Role of                      Reticulated Platelets</b> Kyle Riding, PhD, MLS (ASCP) <sup>sm</sup> <i>Sponsored by Sysmex</i>
<b>Chemistry</b>	<b>Celiac Serology or                      GI Biopsy                      What Would You Prefer</b> Paulina Leung-Lee, BS, MBA <i>Sponsored by BioRad</i>	<b>APS Testing by the                      Numbers</b> Paulina Leung-Lee, BS, MBA <i>Sponsored by BioRad</i>	<b>QC: The Ugly, The Bad and the (We Hope) Good</b> Sten Westgard, MS <i>Sponsored by Abbott</i>	
<b>Transfusion                      Medicine</b>	<b>Managing Post Donation                      Information &amp; Assessing                      Transfusion Risk</b> Anne Eder, MD, PhD <i>Sponsored by Red Cross</i>	<b>New Frontier in Blood                      Banking: Will Molecular                      Genotyping Replace Red                      Cell Genotyping?</b> Ufie Asu, M.Sc Barb Pumphrey <i>Sponsored by BioRad</i>	<b>Using Self Assessments to                      Avoid Disappointing                      External Assessment                      Outcomes</b> Melanie Champion, MBA, MT (ASCP)	<b>Transfusion Medicine                      Case Studies: Medical,                      Legal &amp; Tissue Issues</b> Edward Snyder, MD
<b>Lunch Speaker 12:30pm-2:00pm) Laboratory Acquired Infections: "What's Bugging You?"-Rick Danforth, SM(ASCP)</b>				
<b>Microbiology</b>	<b>Review of Multi-Drug Resistant Organisms</b> Martha Roberts, PharmD		<b>The Gram Stain:                      The Best Tool in the Tool Box</b> Edward J. Sklut, MS, M(ASCP)	
<b>Cytology</b>	<b>HPV Clinical Decision                      Making:                      Your Role as a                      Laboratorian</b> Angela MacIntyre, PhD <i>Sponsored by Roche</i>	<b>Enhanced Cytology                      Delivered by Molecular                      Diagnostics</b> Zoltan Nagyamnyoki, MD, PhD	<b>Salivary Gland Fine                      Needle Aspiration</b> Darcy A. Kerr, MD	<b>Body Fluids:                      A Case Based Tour</b> Roseann I Wu, MD, MPH
<b>Public                      Health</b>	<b>Norovirus:                      A Rhode Island Perspective</b> Deanna Simmons, MS, MT(ASCP) Michael Gosciminski, MT, MPH		<b>2014 Update on Vitamins for Eye, Heart and General                      Health: What Does Evidence Tell Us?</b> Anne Hume, PharmD, FCCP, BCPS	
<b>Management</b>	<b>Baby Boomers, Gen X and Gen Y, Oh My!</b> Jeff Smith, MA, PCC <i>Sponsored by Roche Diagnostics</i>		<b>CAP Lab Accreditation Program</b> Noubar Kessimian, MD, FCAP <i>Sponsored by CAP</i>	
<b>Student                      Forum</b>	<b>Student Forum Meeting</b> Georgina Nicolo	<b>MLS Jeopardy</b> Wayne Aguiar	<b>Mock Certification Exam</b>	

# CELEBRATE THE PROFESSION!

## NATIONAL MEDICAL LABORATORY PROFESSIONALS WEEK

APRIL 22-26, 2014



**Lab week is a time to honor the more than *300,000 laboratory professionals* around the country who perform and interpret more than *10 billion laboratory tests* in the United States every year.**

**Lab week is a chance to let people know about your dedication and commitment to your profession and to quality patient care.**



**SAVE THE DATE!!!**

**2015 ASCLS-CNE Annual Convention**

**April 28-30, 2015**

**Rhode Island Convention Center  
Providence, RI**

The committee welcomes and values your input. If you have suggestions for topics, speakers or any other feature of the convention, please contact:

David Mello, General Chair  
djmello@lifespan.org

or

Maddie Josephs, Program Chair  
mjosephs@ccri.edu

## **ASCLS-CNE**

**American Society for Clinical Laboratory Science -Central New England**

**66th Clinical Laboratory Science Convention -2014**

***Maddie Josephs MS, MT(ASCP)***

43 Bourne Avenue

Rumford, RI 02916