

THE
UNIVERSITY
OF RHODE ISLAND

Division of Research and Economic Development

Faculty Senate
Thursday, December 6, 2018

Presentation on the
URI Division of Research and
Economic Development status
by
Peter J. Snyder, Ph.D.

THINK BIG  WE DO™



TOTAL AWARDS TREND

FY2008 - FY2018 in Millions

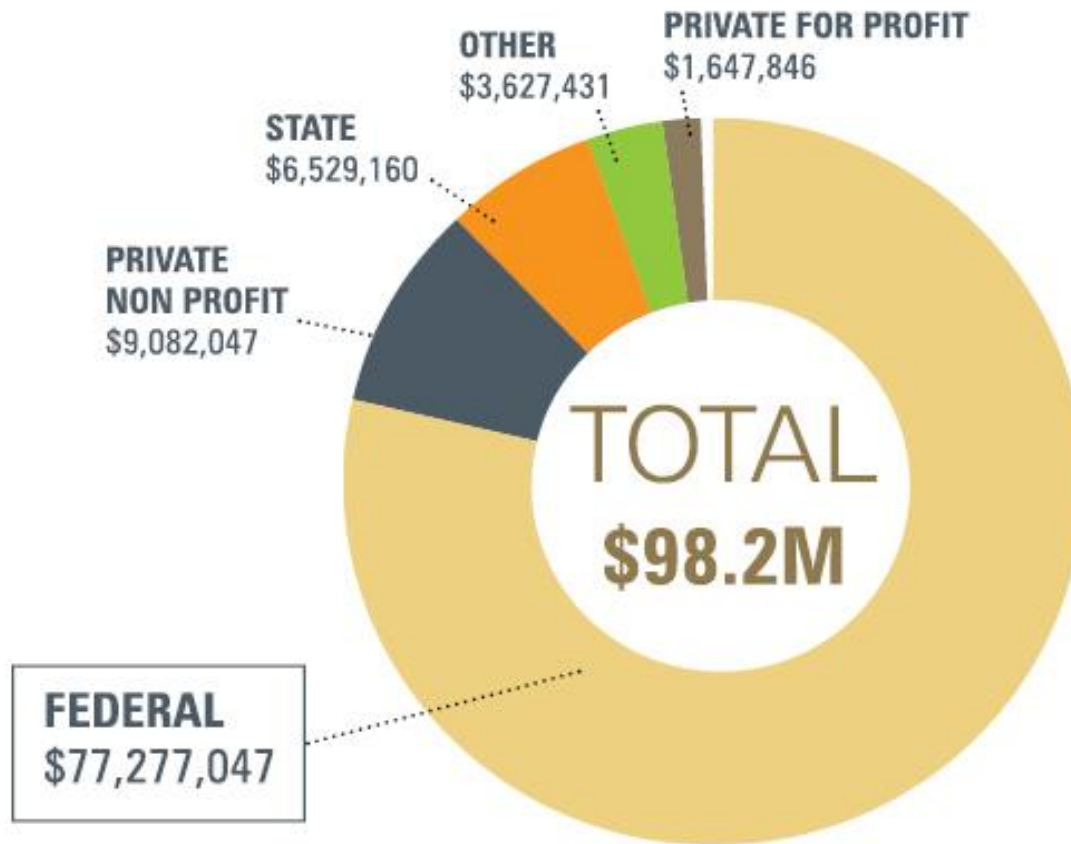


Research Proposals
Submitted FY2018
\$363 Million

Expenditures FY2018
\$80.8 Million

THINK BIG  WE DO™

Awards by Source of Funds

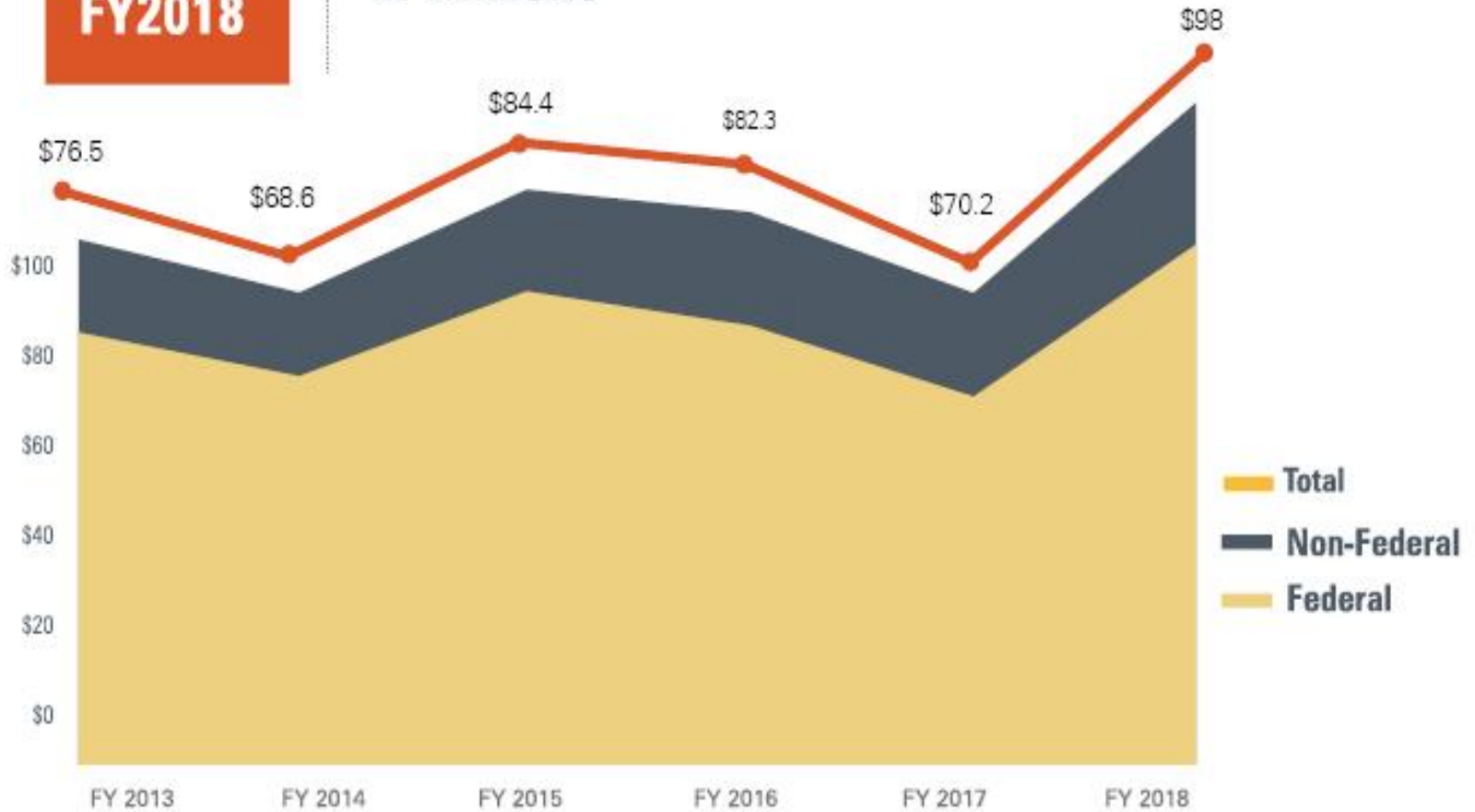


The University of Rhode Island's goal is to reach \$125 million in sponsored research funds by FY2022

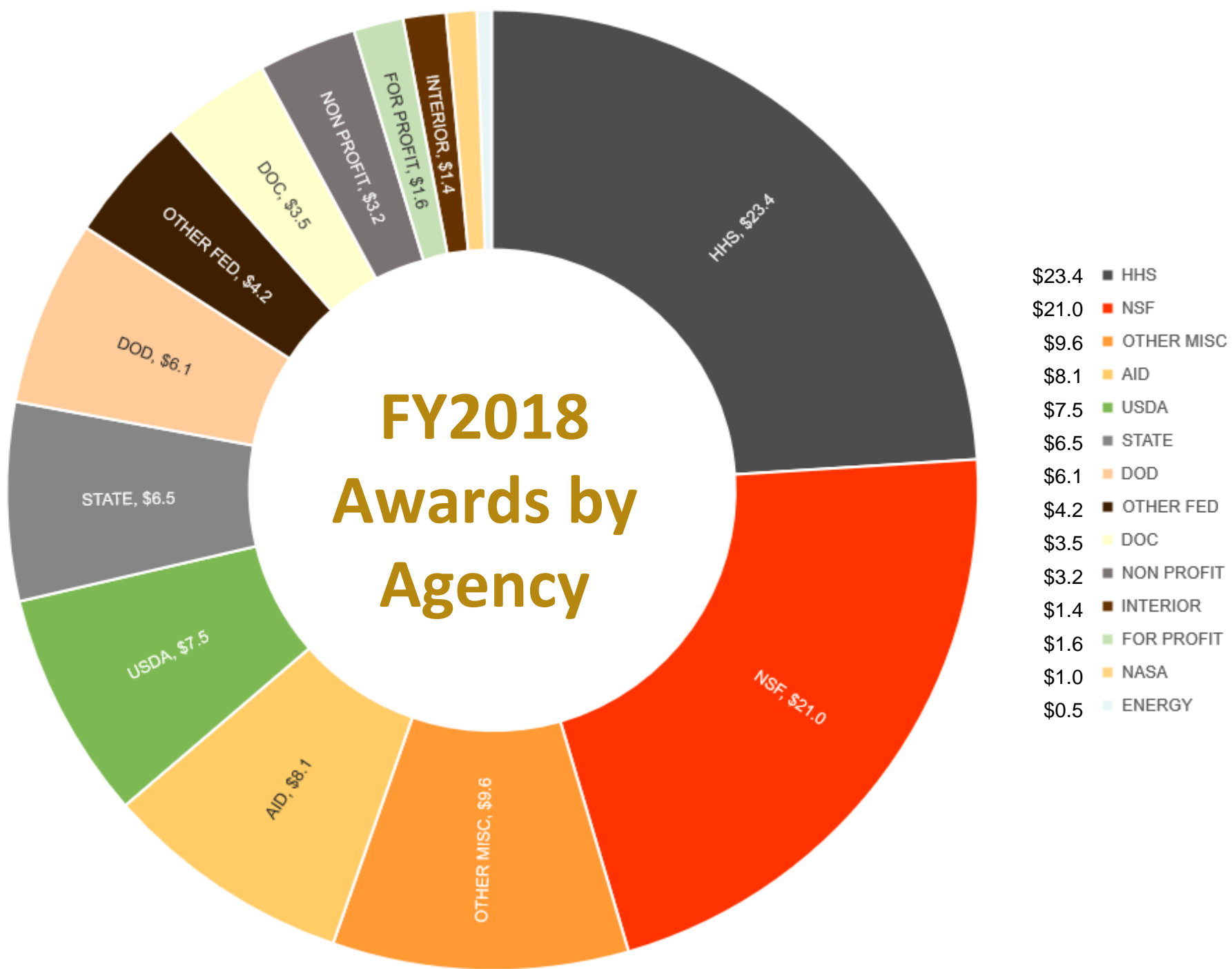
THINK BIG  WE DO™

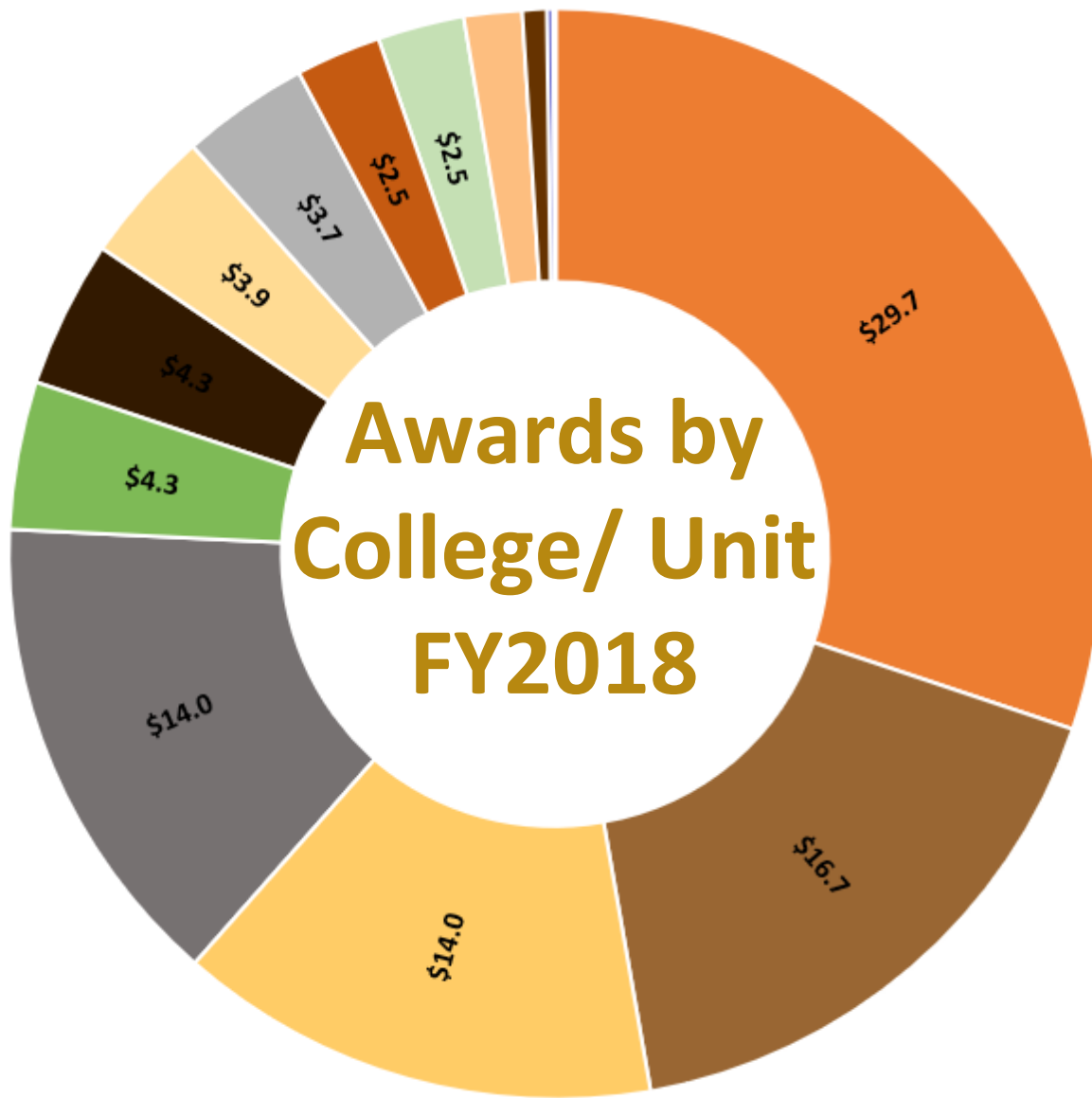
**FY2013
to
FY2018**

Sponsored Awards in Millions



FY2018 Awards by Agency





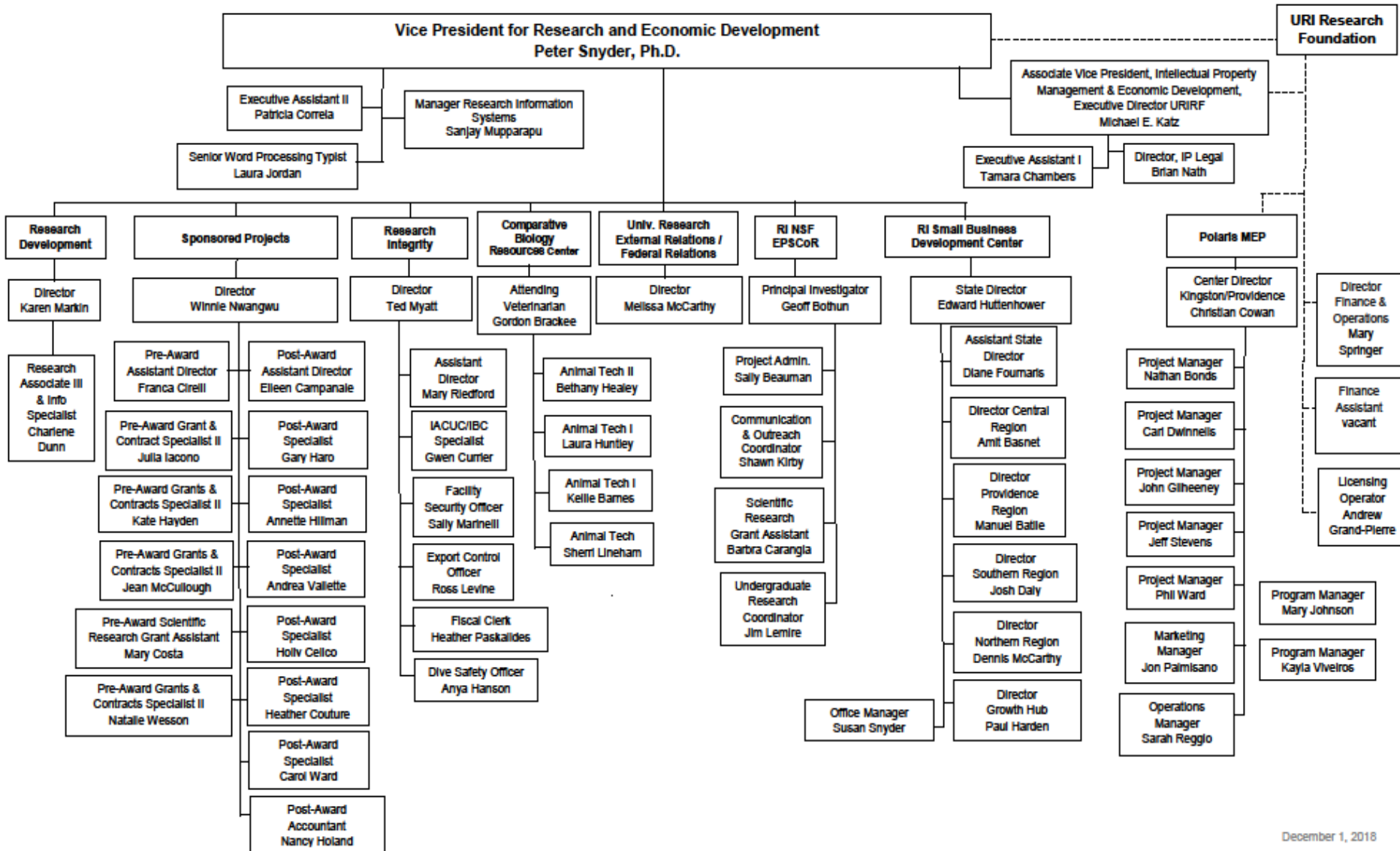
- Graduate School of Oceanography
- Environment and Life Sciences
- Pharmacy
- Engineering
- Health Sciences
- URI Research Foundation
- Arts and Sciences
- Academic Health Collaborative
- Vice President for Research
- University Library
- URI Foundation
- Education and Professional Studies
- Nursing
- Business
- Provost



FY2009-2017 Cumulative Return on Investment URI Internal Seed Grant Programs



THE DIVISION OF RESEARCH AND ECONOMIC DEVELOPMENT



December 1, 2018



Current High Priorities

- New electronic research administration system (*efficiency & transparency*)
- New internal competitions management system

THINK BIG  WE DO™



Applications and Competitions for Grant Funding

Welcome. You have no new activity coming up.



Internal grant funding opportunities and competitions are available to URI faculty to support research, scholarship and creativity and are intended to foster professional growth, productivity.

This portal supports announcements and applications for limited submissions, internal funding opportunities and other competitions coordinated and organized by the following offices.

[Office of the Vice President for Research and Economic Development,](#)
[Office of the Provost](#)
[Graduate School](#)

Search:

Title	Due Date	Category	Award Cycle
		All	All
RCAC Proposal Development	02/08/2019	Internal Funding Opportunity	2019-2020
NSF Major Research Instrumentation	11/30/2018	Open Funding Opportunities	Annual

Showing 1 to 2 of 2 entries

Competition Space Portal

The InfoReady Competition Space platform at URI is available to Faculty, Staff and Students through a collaborative effort between the Division of Research and Economic Development and the Office of the Provost.

Competition Space Program Contacts:

Limited Competitions:

Karen Markin
Phone: 401-874-5971
Email: kmarkin@uri.edu

Division of Research and Economic Development
QUESTIONS? [Email us](#)

75 Lower College Road
Kingston
RI 02881



THINK BIG  WE DO™



Current High Priorities

- New electronic research administration system (*efficiency & transparency*)
- New internal competitions management system
- Long-term planning for animal care facilities infrastructure
- Work with CRCA, Provost and President's Office to Re-Define Institutes, Centers, Programs – and their organization within larger institution
- Re-Imagine Role, Mission, Branding of URI Research Foundation – URI VENTURES
- Enhance Strategic Partnerships with Other Universities, Companies and Consortia – e.g., RI Innovation Bonds
- Long-Term Sustainability Plan for Core Research Facilities
- DRED Internal Management – 1 & 4 Yr. Strategic Plans for Each Department, New Emphasis on Professional Development, Hiring and Promotion of Staff as Creative Professionals

THINK BIG  WE DO™