

THE
UNIVERSITY
OF RHODE ISLAND

University College for Academic Success

Getting to know the Academic Enhancement Center (AEC)



THINK BIG  WE DO™

Jennifer L. Burgess Director, Academic
Enhancement Center

AEC Vision

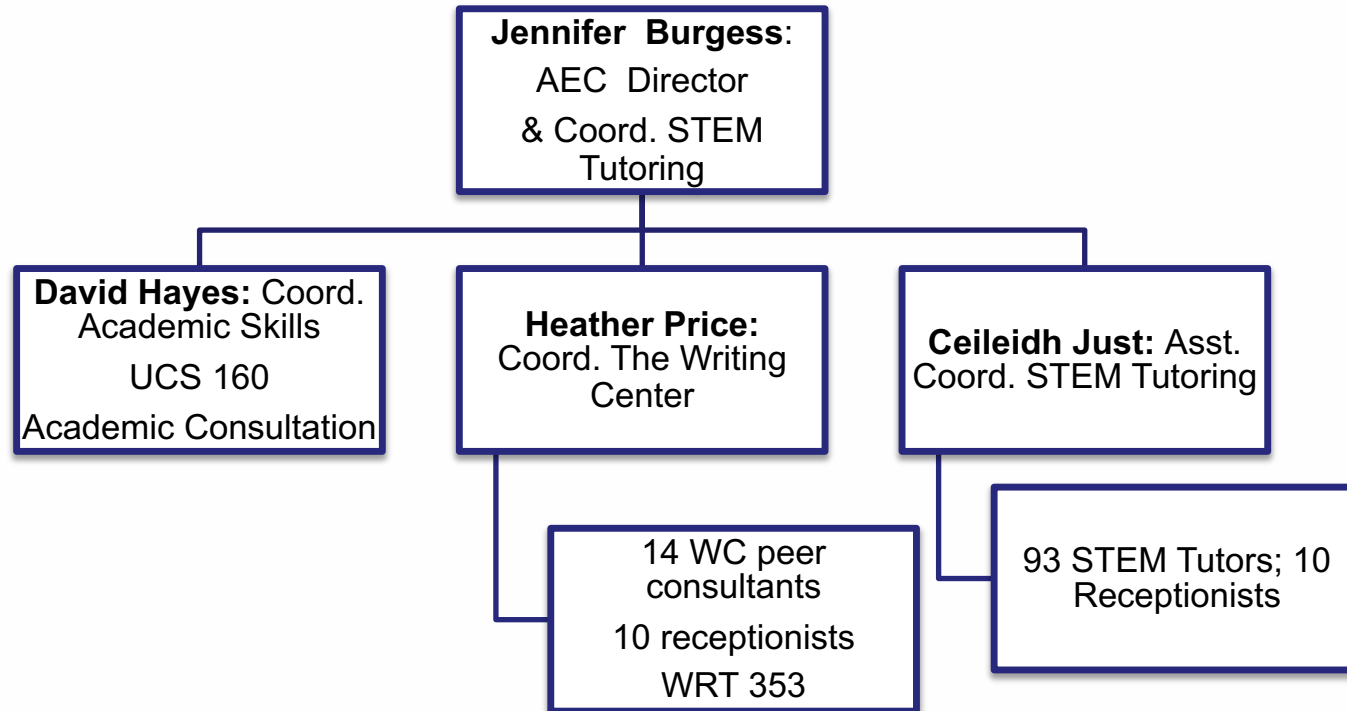
Vision:

The Academic Enhancement Center (AEC) supports student learning and academic success through **scaffolding** student engagement with course content, helping with the development of **metacognitive** strategies and skills, critical thinking, writing, time management, and test taking skills. Our programs are primarily **peer-to-peer**, enabling us to support the development of collaborative learning skills for all students, as well as teaching and leadership skills for student staff. The AEC offers unique resources including 3 forms of tutoring in the **STEM** disciplines; an **Academic Skills Development** programming, including UCS 160; and the **Writing Center** for helping students at all levels of writing skills development.

THINK BIG  WE DO™

AEC Organizational Structure

University College for Academic Success



THINK BIG  WE DO™



How the Academic Enhancement Center Supports Student Success



- STEM Tutoring



- Writing Center



- UCS 160 and Academic Skills Consultations

THINK BIG  WE DO™



STEM Tutoring Programs

- **Undergraduate Staff:**
 - 93 peer tutors representing vast array of majors
- **Weekly Tutoring Groups**
 - 50 minutes in same space with same people
 - 6 students with 1 tutor
- **Drop In Centers**
 - Math, Chemistry, Physics, Biology
 - Monday – Thursday 2:00 - 7:00pm
- **One-Time Group Appointments**
 - Up to 6 students with 1 tutor
 - Non-recurring



THINK BIG  WE DO™



Core Functions:

- Provide peer tutorial support in 100 and 200 level math, chemistry, physics, biology, and other select STEM courses
- Leverage peer to peer best practices to support learning aligned with course & instructor specific small groups
- Encourage the development of growth mindset coupled with effective study strategies and content support in STEM courses
- Provide meaningful work experience and professional development for undergraduate tutoring staff

THINK BIG  WE DO™

STEM Support Available

BIO:

101 Principles of Biology
102 Principles of Biology II
220 A&P 1
222 A&P 2
352 General Genetics (same as CMB 352)

CHM:

101 General Chemistry
103 Introductory Chemistry
112 General Chemistry II
124 Introduction to Organic Chemistry
191 General Chemistry
192 General Chemistry
227 Organic Chemistry
228 Organic Chemistry II

CMB:

201 Introductory Medical Microbiology
211 Introductory Microbiology
311 Introductory Biochemistry
352 General Genetics (same as BIO 352)

CSC:

101 Computing Concepts
106 The Joy of Programming
110 Survey of Computer Science
211 Object-Oriented Programming

ECN:

201 Microeconomics
202 Macroeconomics

MTH:

101 Introduction to College Algebra
103 Applied Precalculus
107 Introduction to Finite Mathematics
108 Topics in Mathematics
111 Precalculus
131 Applied Calculus I
132 Applied Calculus II
141 Introductory Calculus
142 Intermediate Calculus
180 Mathematical Tools for Computing
215 Introduction to Linear Algebra
243 Multivariable Calculus
244 Differential Equations

PHY:

109 Introduction to Physics
111 General Physics I
112 General Physics II
203 Elementary Physics I
204 Elementary Physics II
205 Elementary Physics III (limited basis)

PSY:

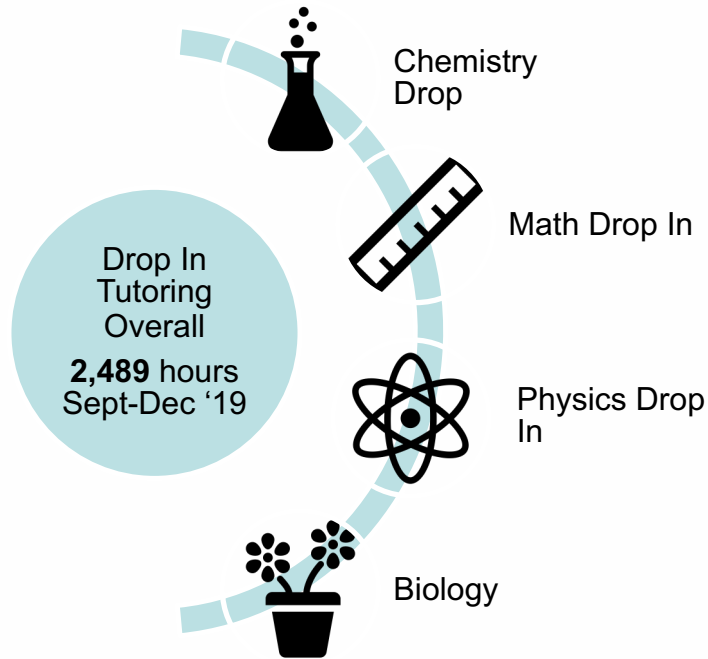
200 Quantitative Methods in Psychology
(limited basis)

STA:

220 Statistics in Modern Society
307 Introductory Biostatistics
308 Introductory Statistics



STEM Program Highlights



- Student-facing technology
- Strategic campus partnerships
- Updated and enhanced recruitment practices

3,265 hrs. of support via Weekly Tutoring Groups

293 hrs. of support via Tutoring Appointments

**Overall Fall 2019 hours of support: 6,047 hrs. provided to
1,060 *unique* URI students**

THINK BIG  WE DO™

The Writing Center

Undergraduate staff:

- 14 peer consultants representing diverse majors
- 10 receptionists trained in WC online and customer service

Consultation Format:

- 1-1 or small group writing consultations
 - 25 or 50 minute



WC Majors:

Writing & Rhetoric
English
Psychology
Education
Film
Communication Studies
Communicative Disorders
Pharmacy
Health Studies
Marine Biology, Environmental
Science
Kinesiology
Minors in French, Viola
Performance, and Nutrition

THINK BIG  WE DO™



Core Functions:

- Students work side-by-side with peer tutors to find ways to best communicate their ideas in writing
- WC Peer Consultants trained via *WRT 353: Issues and Methods in Writing Consultancy*
- WC consultants trained to assist in *any* undergraduate course writing assignment
- Tutors can help students get "un-stuck" on any writing assignment, at any stage of the writing process: from understanding a prompt and brainstorming ideas, to outlining and drafting, to developing strategies for revision
- Scheduling ahead of time online is preferred but drop-ins are often available for unscheduled appointments

THINK BIG  WE DO™

Writing Center Highlights

- Fall 2019:

- 914 total appointments
- 573 *different* visitors
- Diverse majors of visitors:
 - Communicative Disorders (89 appointments)
 - Psychology (80 appointments)
 - Health Studies (57 appointments)
 - Nursing (51 appointments)
 - Communication Studies (56 appointments)
 - Education (49 appointments)

Frequently supported courses:

- WRT 106 (120 appointments)
- WRT 201 (41 appointments)
- WRT 104 (36 appointments)
- ENG 110 (35 appointments)
- PSY 113 (27 appointments)
- EDC 102 (25 appointments)
- CMD 160 (23 appointments)

Class Visits:

- Outreach to B1 Gen Ed courses
- Visited all 36 sections of WRT 104 & 106
- Additional visits to many non-WRT courses



UCS 160 & Academic Skills Consultations

- **UCS 160:** Success in College Learning Environments (1cr.)
 - Analyze learning needs in college settings; Apply effective study and work management strategies; Improve metacognitive awareness and academic skills
- **Academic Skills Consultations:**
 - Available to UCS 160 students and others
 - Connect students with other campus resources to address the challenges in adapting new study strategies
 - Identify areas for improvement and help individual students implement these changes into their learning strategies

THINK BIG  WE DO™

Academic Consultations:

- Designed to assist study strategies in any course.
- *Academic Skills Consultations* are 30-minute, 1 to 1 appointments, scheduled through Starfish with Dr. David Hayes
- *UCS 160*: metacognitive understanding of brain function in the learning process introduced to move students to more effective study practices yielding better learning outcomes.

THINK BIG  WE DO™



Ongoing Collaborations

- Direct contact with STEM & WRT Faculty
- Working closely with advisors for UCS 160 referrals
- Learning Advisory Board
- ITS and leveraging technology including WebEx, TutorTrac
- Maintaining strategic partnerships with OATL, Talent Development, College of Engineering, Provosts Office, Colleges and Departments
- Close partnership with DSS



5 year plan and strategic alignment

AEC 5 YEAR PLAN 2019/20-2023/24

✓ Primary Objectives

2019-20

2020-21

2021-22

2022-23

2023-24

Strengthen Strategic Partnerships

Leadership Transition and SWOT

Improve Access and Outreach

Set Goals and Milestones

Leverage and Share Data

Implement change and inform stakeholders

Continue Initiatives that promote diversity & inclusion

Share data impact with campus community

Continually evaluate areas where the AEC can change/improve in response to campus needs

Continuous analysis of strategic alignment and effectiveness

SEPTEMBER 2019

STEM Tutoring Data and Achievements

WEEKLY TUTORING GROUPS

436 students are enrolled in Weekly Tutoring Groups.

601 hours have been conducted for WTG's.

This is a **308% increase** in contact hours when comparing to September 2018!



DROP-IN CENTERS AND TUTORING APPOINTMENTS

309 students have been served for a total of **764** hours.

58 Tutoring Appointments have been scheduled.



RESOURCES

33 resources, such as laptops and scientific calculators, have been signed out by students using STEM Tutoring services.



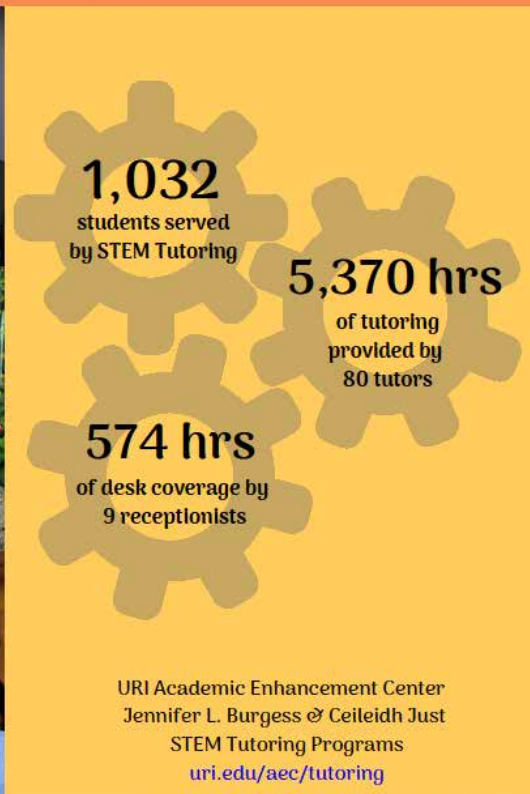
TRAINING HOURS

Our tutors and receptionists have completed a total of **18** hours of professional development and training during the month of September.

URI Academic Enhancement Center
STEM Tutoring Programs
Jennifer L. Burgess & Ceileidh Just
uri.edu/aec/tutoring

Monthly Infographics

Showing Thanks to the STEM Team!



October 2019 STEM Tutoring Data

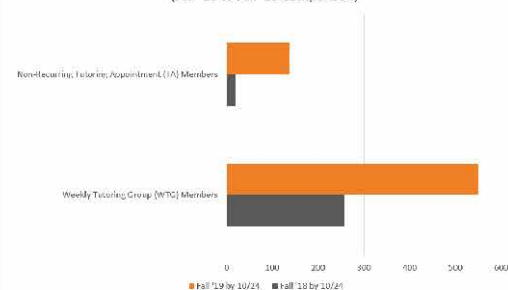


Weekly Tutoring Group membership -- **114%** ahead of this time last year.

Tutoring Appointment membership -- **621%** ahead of this time last year.

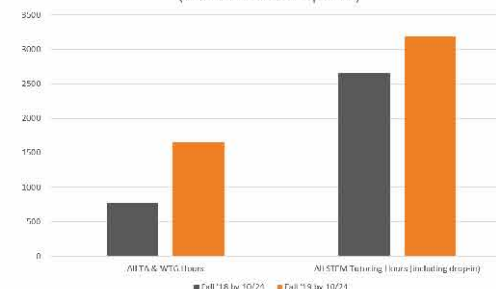
This has provided **112%** more contact hours through Weekly Tutoring Groups and Tutoring Appointments compared to this time last year.

Weekly Group and Tutoring Appointment Membership
(Fall '18 to Fall '19 Comparison)



Legend: Fall '18 by 10/21 (Dark Grey), Fall '19 by 10/21 (Orange)

STEM Tutoring Hours
(Fall '18 to Fall '19 Comparison)



Legend: Fall '18 by 10/21 (Dark Grey), Fall '19 by 10/21 (Orange)

AEC collaborations for October 2019 include:

- Center for Career & Experiential Education
- National Day on Writing
- Office of International Students & Scholars
- Office of the Provost

URI Academic Enhancement Center
STEM Tutoring Programs

Jennifer L. Burgess & Ceileidh Just
uri.edu/aec/tutoring

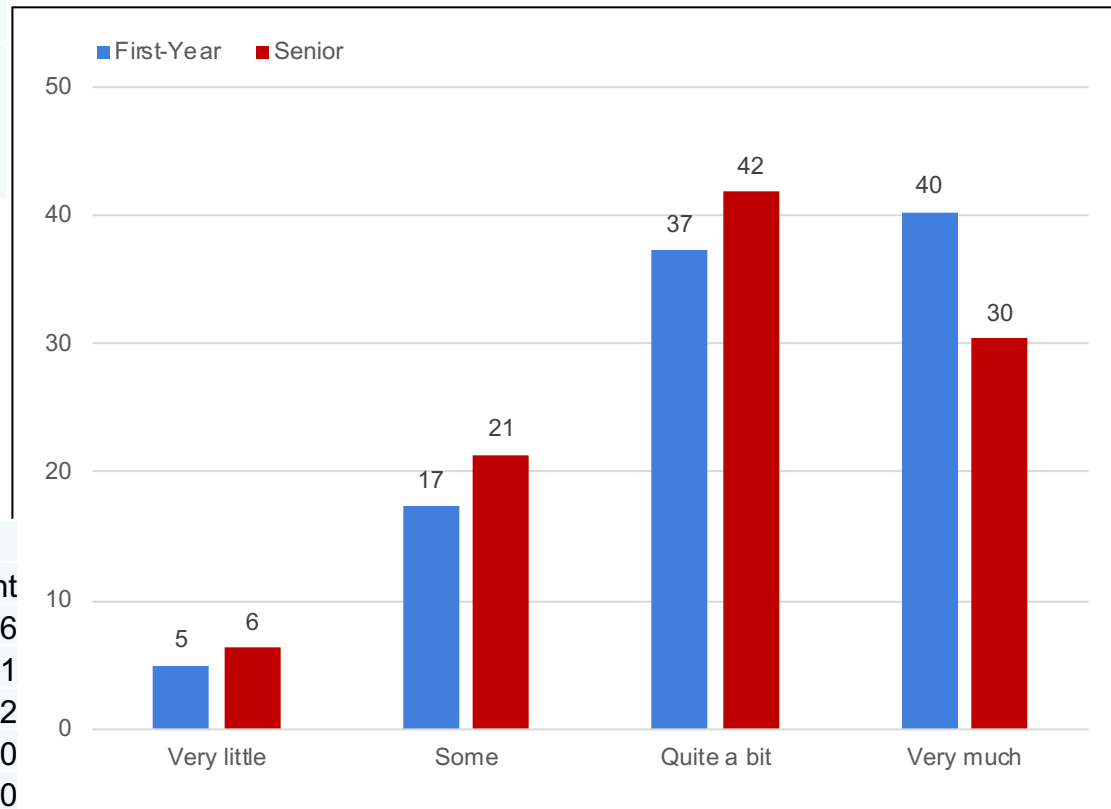
NSSE Data!

Who: 1st yr. and senior year students, in Spring 2019

14. c. How much does your institution emphasize the following?

Using learning support services (tutoring services, writing center, etc.)

	First-Year		Senior	
	Count	Percent	Count	Percent
Very little	48	5	57	6
Some	167	17	194	21
Quite a bit	358	37	379	42
Very much	387	40	275	30
Total	960	100	905	100



Ways the Faculty Senate Can Support the AEC

- Assist in referring students & prospective tutors to our services
- Understand and tell others what the programs provide
- Include our updated syllabus statement in your syllabus
- Continue to advance the conversation about student support at URI
- Encourage any duplicated tutoring services to share in our training and supervision protocols to ensure quality services

THINK BIG  WE DO™

Helpful Resources for Faculty

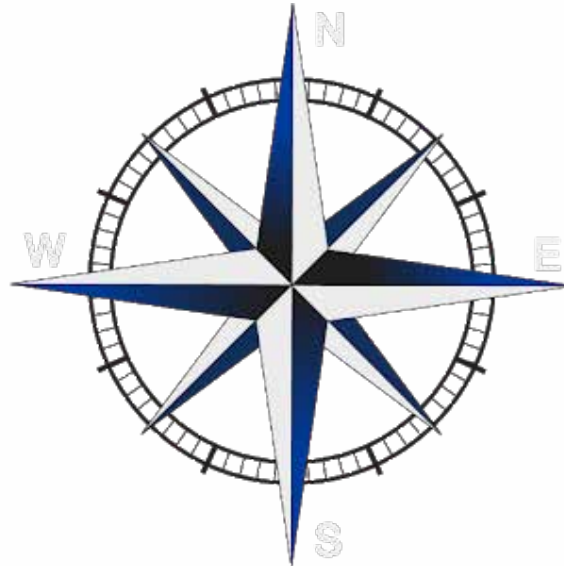
- <https://web.uri.edu/aec/faculty/>
 - Contains our updated syllabus information
 - Schedules and information on all services
 - Videos and links to learning support

Don't hesitate to reach out with questions!

AEC at URI

Leadership

Purpose



Vision

Alignment

THINK BIG  WE DO™



Questions

