

# A “New” Senate ‘n’ YOU, Senate

# Selection Time is Upon Us!

- Returning senators (and those who may choose to run again in the future)...

## BEHOLD!

## INFORMATION!

(and some partly informative but mostly gratuitous animal pictures...)

THINK BIG  WE DO™

# First, a review of the basics:

- These are your committee choices:
  1. Curriculum and Standards Committee
  2. Research and Creative Activities
  3. Teaching Advising and Assessment
  4. Technology and Infrastructure
  5. Service and Community Life
  6. Constitution, By-Laws, and University Manual

THINK BIG  WE DO™



# It is also possible to serve **ONLY** on a subcommittee:

- These are your choices:
  1. General Education (under CS)
  2. Academic Calendar (under CS)
  3. Competitive Grants (under RCA)
  4. Center Review (under RCA)

THINK BIG  WE DO™



[www.uri.edu/facsen](http://www.uri.edu/facsen)

Let OUR website be your go-to for ALL information on ALL things restructuring!

CANINE  
BELIEVE  
MINE  
EYES?



THINK BIG  WE DO™

THE  
UNIVERSITY  
OF RHODE ISLAND



Now, the deets...

- First,

# WORKLOAD ADJUSTMENT



THINK BIG  WE DO™

# Memorandum of Understanding

- The Provost and the Faculty Senate Executive Committee created a Memorandum of Understanding (MOU)
- If you like fancy language, you can see it yourself on [www.uri.edu/facsen](http://www.uri.edu/facsen).
- Click “Senate Committee Restructuring,” and look under “March,” when it came to be

THINK BIG  WE DO™



## But for the tl/dr crowd:

- Do not ASSUME workload adjustment!
- Inform your chair and/or dean *as soon as possible* if you are considering serving in a capacity that allows for workload adjustment.
- Final workload adjustment decisions are made by chairs and deans.

THINK BIG  WE DO™





# So... What Positions Include Said Workload Adjustment?

- All committee chairs: One-third of ***duties***, but not more than one course release per semester
- All committee members of Curriculum and Standards OR Research and Creative Activities: Same as above
- EXCEPT...

THINK BIG  WE DO™



# Two exceptions due to committee responsibilities

- The chairs of the two committees mentioned before (Curriculum and Standards, Research and Creative Activities):
- Up to one half of ***duties***, but not more than one course release per semester

THINK BIG  WE DO™



# Attached committee service required

- University Manual language currently requires some joint committee service that is attached to certain Senate committees
- Here are those duties ...

THINK BIG  WE DO™



# Teaching, Advising and Assessment

- ONE member will sit on the joint Learning Outcomes Oversight Committee (LOOC)



THINK BIG  WE DO™

# Research and Creative Activities [RCA]



RCA



Competitive Grants Subcommittee (3)

Center Review Subcommittee (3)

3 Senators on Subcommittee NOT on RCA

3 Senators on Subcommittee NOT on RCA

THINK BIG  WE DO™

# CHAIRS of the Subcommittees

- Two members of RCA, but NOT the chair of RCA. The chair of RCA will sit on one of the subcommittees but will not chair it.

Competitive  
Grants Chair

Center  
Review  
Chair



RCA  
Chair

THINK BIG  WE DO™

# CHAIR of RCA

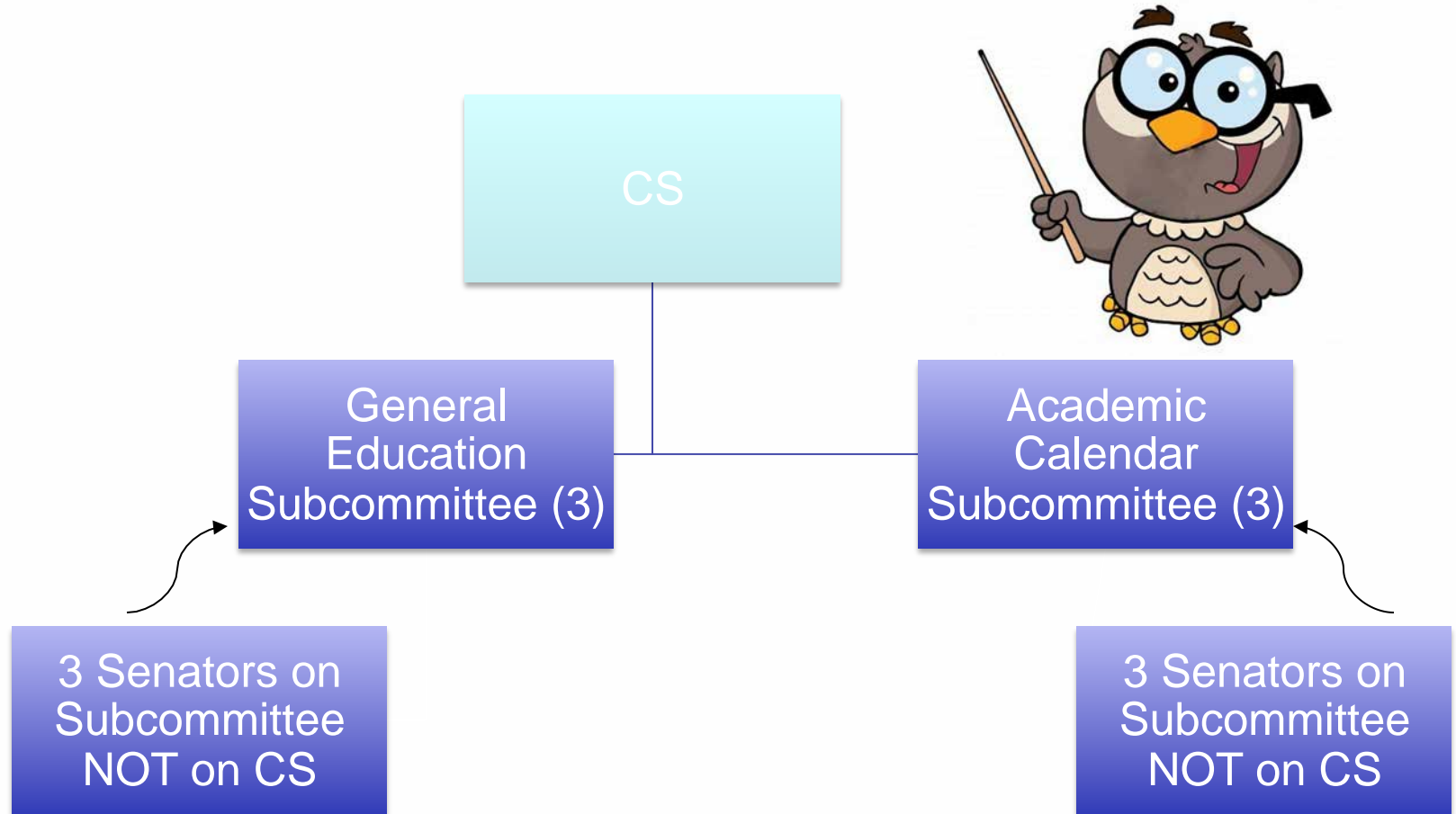
- Member of joint Intellectual Property Committee: Meets 3<sup>rd</sup> Thursday every month year-round 10:30 a.m. – 12:30 p.m.



THINK BIG  WE DO™



# Curriculum and Standards [CS]



THINK BIG  WE DO™





# CHAIRS of the Subcommittees

- Two members of CS, but NOT the chair of CS. The chair of CS will sit on one of the subcommittees but will not chair it.

Academic  
Calendar Chair



Gen Ed  
Chair



CS Chair

THINK BIG  WE DO™

# CHAIR of CS

- Member of Joint Committee on Academic Planning (JCAP)



THINK BIG  WE DO™

# CHAIR of Gen Ed Subcommittee

- Member of Joint Committee on Academic Planning (JCAP)



◀ BIG  WE DO™

# ONE member of CS for EACH Committee below (not the Chair)

- Member of Learning Outcomes Oversight Committee (LOOC)
- Member of Joint Committee on Online and Distance Learning



THINK BIG  WE DO™

# ONE member of GE for EACH Committee below (not the Chair)

- Member of Learning Outcomes Oversight Committee (LOOC)
- Member of Joint Committee on Online and Distance Learning



THINK BIG  WE DO™

# Just go to the website.

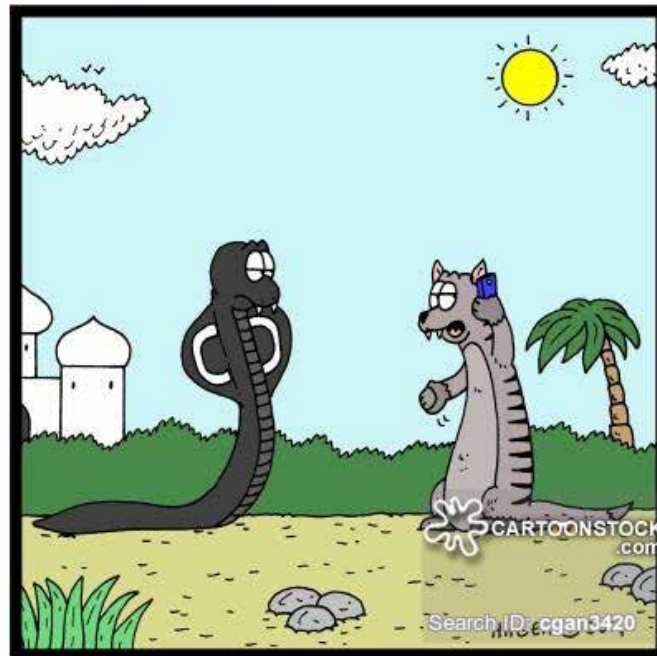
- [www.uri.edu/facsen](http://www.uri.edu/facsen)
- Click on “Senate Committee Restructuring”



THINK BIG  WE DO™

# And fill out the survey!

- You will be surveyed to indicate your interests. Be sure to respond!



Yes, It's Joe Mongoose speaking,  
but I don't have time to take the survey now:  
I'm kind of in the middle of a fight to the death...

THINK BIG  WE DO™



# THE END.



THINK BIG  WE DO™

THE  
UNIVERSITY  
OF RHODE ISLAND

